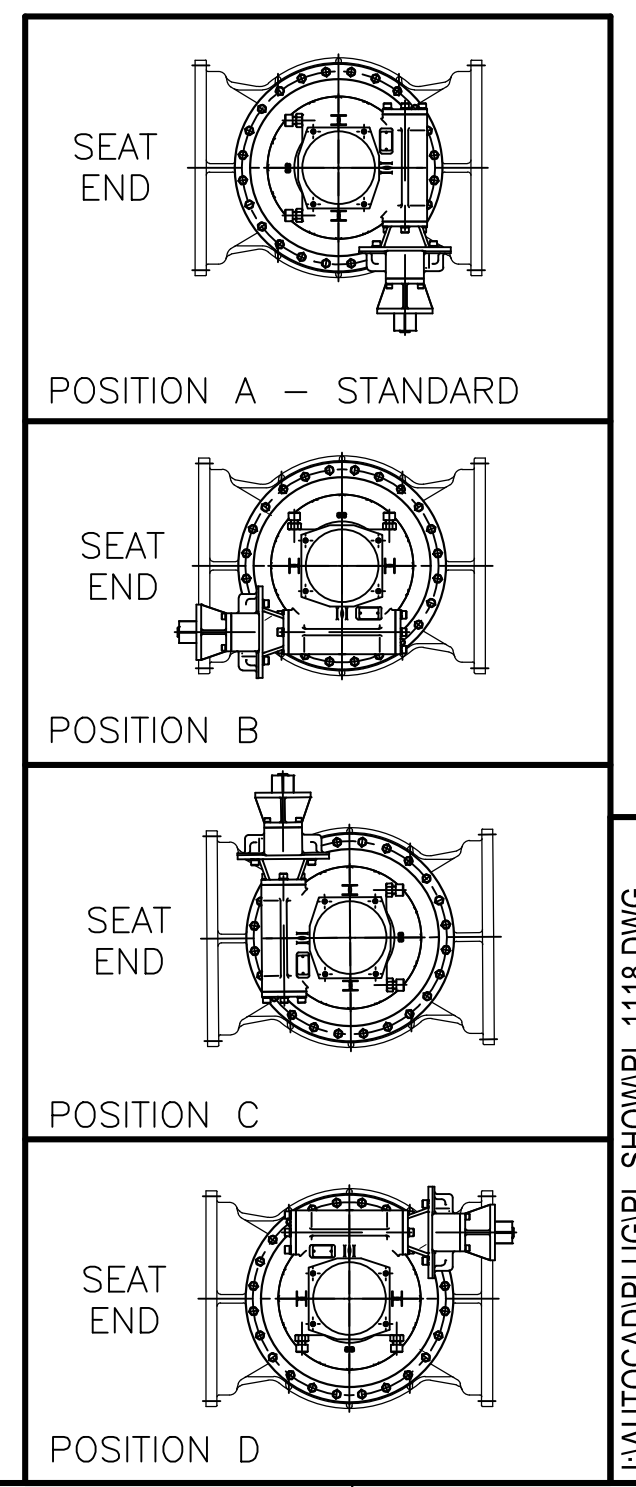
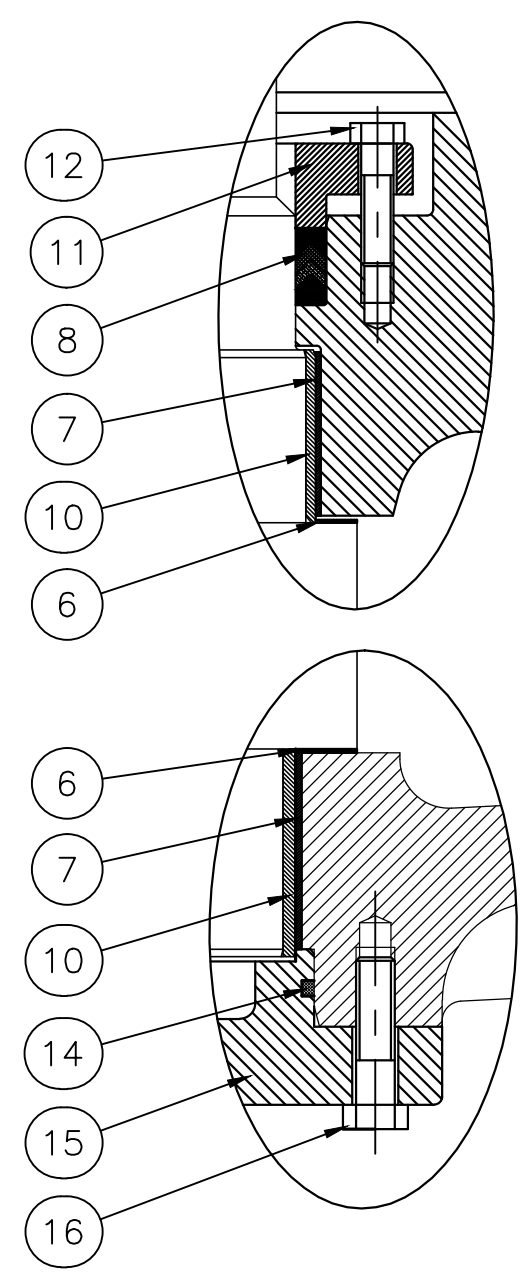
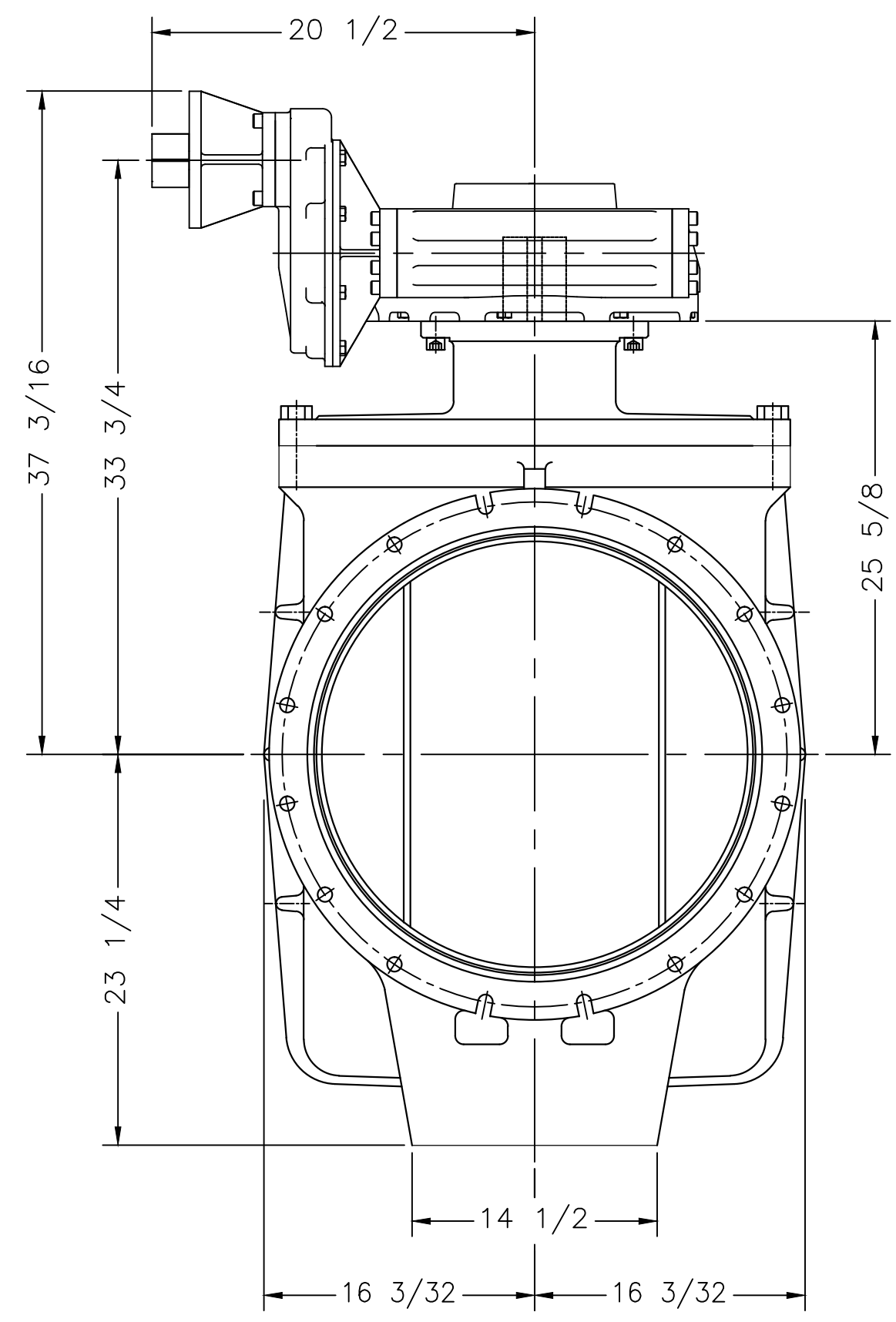
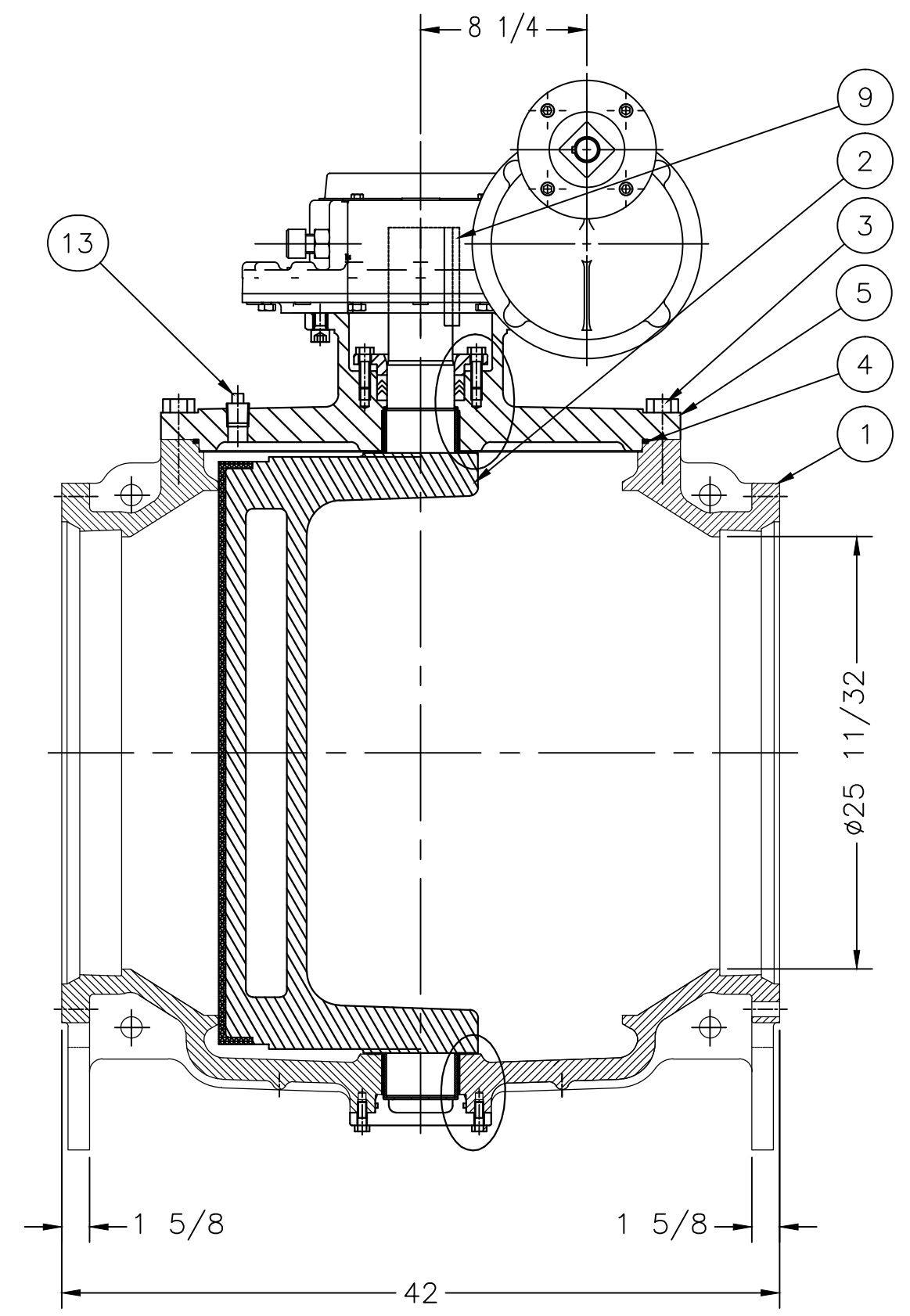


SEAT END

- NOTES:
1. FLANGE DRILLING PER ANSI A21.1 AWWA C111
 2. IN COMPLIANCE WITH AWWA C517
 3. COLD WORKING PRESSURE: 150 PSI
 4. HYDROSTATIC TEST PRESSURE: 225 PSI

PARTS LIST	
ITEM NO.	DESCRIPTION
1	BODY
2	PLUG
3	COVER BOLTS
4	COVER O-RING
5	COVER
6	THRUST BEARING
7	BEARING
8	PACKING
9	KEY
10	PLUG BUSHING
11	PACKING GLAND
12	GLAND BOLTS
13	PIPE PLUG
14	END PLATE O-RING
15	END PLATE
16	END PLATE SCREWS
17	GEARBOX ACTUATOR
18	ACTUATOR BOLTS



GA INDUSTRIES, LLC 24" 100% PORT ECO-CENTRIC PLUG VALVE W/BURIED SERVICE ROTORK #W72R ACTUATOR MECHANICAL JOINT FLANGES		DIMENSIONS IN INCHES <small>STANDARD TOLERANCES (UNLESS OTHERWISE NOTED)</small> .X = ±.1 .XX = ±.01 <CTQ> .XXX = ±.005 <CTQ> FRACTIONS = ±1/64 ANGLES = ±1° DRAFTS: 3° MAX <small>PER ANSI Y14.5M GD&T <332 FLATNESS, ROUNDNESS, POSITION</small>		<small>CASTING STOCK MINIMUM (SMALLEST DIM. TO SURFACE)</small> 0 TO <1 = 1/8 1 TO <6 = 3/16 6 TO <12 = 1/4 12 AND > = 3/8	
		SERIAL NO. * FIG. NUMBER 517 DATE 01-21-2014 PROPERTY OF GA INDUSTRIES, LLC	DRAWN BY SWR APPR. BY * SCALE N.T.S. REFERENCE FILE PL DRAWING NO. PL-1118 REV. *		

REV.	DESCRIPTION	DATE	BY
* * *			

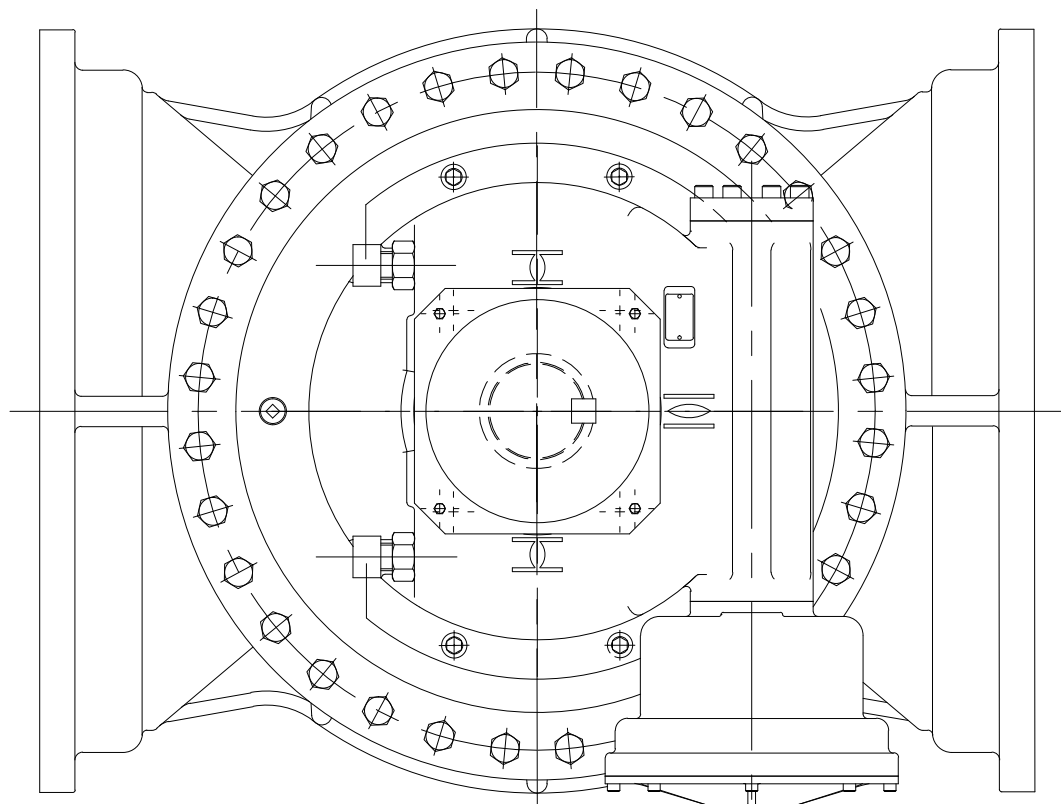
J:\AUTOCAD\PLUG\SHOW\PL-1118.DWG

VALVE DIMENSIONS

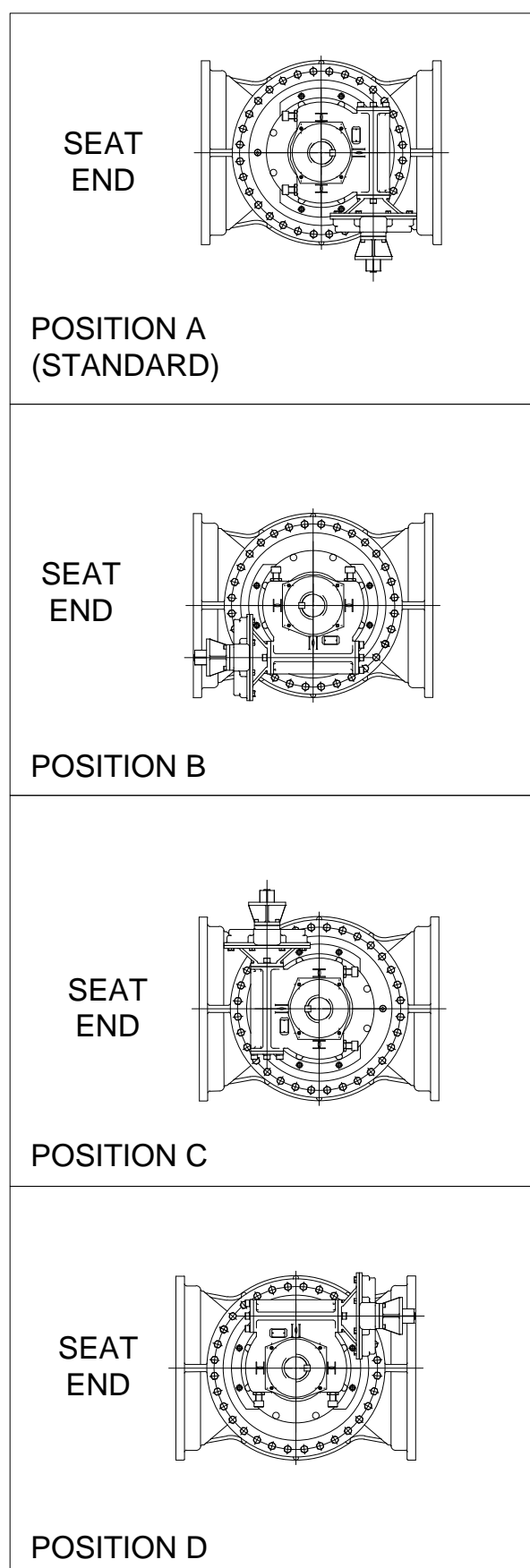
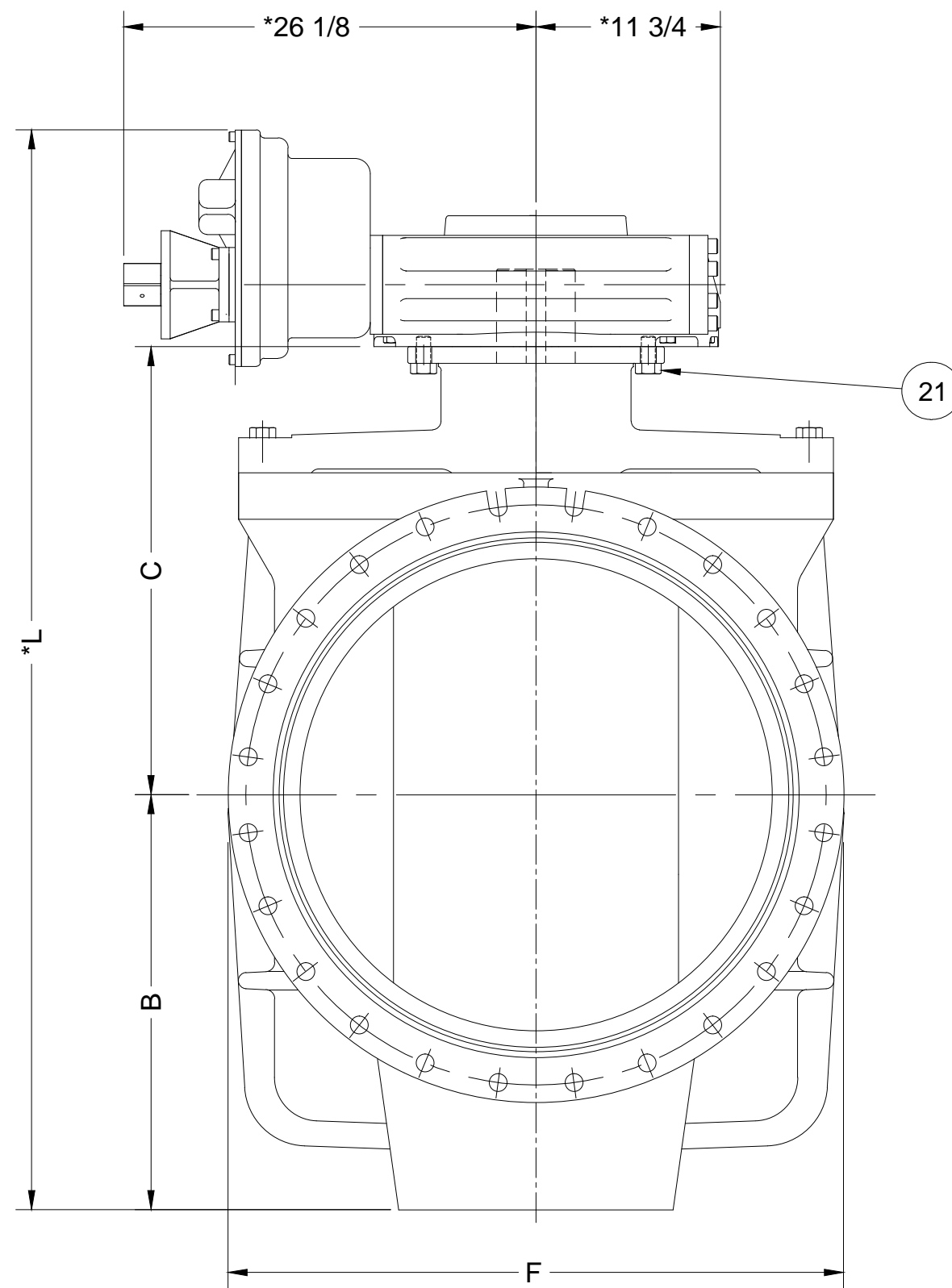
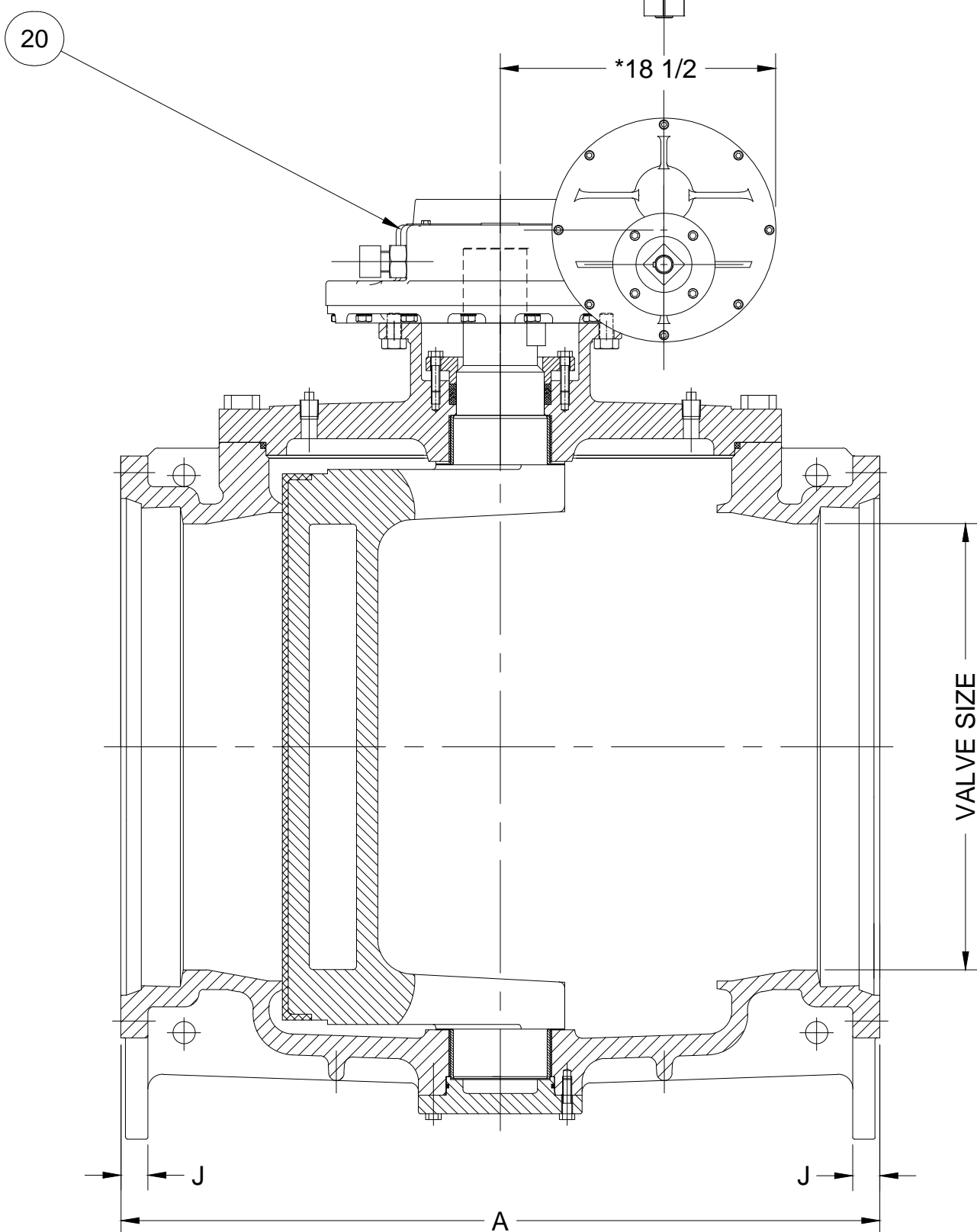
SIZE	A		B		C		F		J		L	
	IN.	MM	IN.	MM	IN.	MM	IN.	MM	IN.	MM	IN.	MM
30"	51	1295	26 3/8	670	28 1/2	724	39 1/8	994	1 13/16	46	68 5/8	1743
36"	60	1524	28 13/16	732	31	787	46	1168	2	51	73 5/8	1870

PARTS LIST	
ITEM NO.	DESCRIPTION
20	GEARBOX ACTUATOR
21	ACTUATOR BOLTS

SEAT END



- NOTES:
 1. FLANGE DRILLING PER ANSI A21.1 AWWA C111
 2. IN COMPLIANCE WITH AWWA C517
 3. COLD WORKING PRESSURE: 150 PSI
 4. HYDROSTATIC TEST PRESSURE: 225 PSI



*NOTE: DIMENSION MAY VARY; REFER TO ACTUATOR DATA TO VERIFY.

DIMENSIONS IN INCHES	
STANDARD TOLERANCES (UNLESS OTHERWISE NOTED)	CASTING STOCK MINIMUM (FOR MACHINED SURFACES)
X = ±.1	0 TO <1 = 1/8
XX = ±.01	1 TO <6 = 3/16
XXX = ±.005	6 TO <12 = 1/4
FRACTIONS = ±1/64	12 AND > = 3/8
ANGLES = ±1°	
DRAFTS: 3° MAX	
PER ANSI Y14.5M GD&T <3/32 FLATNESS, ROUNDNESS, POSITION	

GA INDUSTRIES, LLC
 30"- 36" ECO-CENTRIC PLUG VALVE
 W/BURIED SERVICE ROTORK #IW9R MANUAL ACTUATOR
 (FA35 GEARBOX MOUNT) MECHANICAL JOINT FLANGES

SERIAL NO.	FIG. NUMBER	DATE	PROPERTY OF GA INDUSTRIES, LLC	DRAWN BY	APPR. BY
	517	08-22-2017		DAK	*
REFERENCES	FILE	DRAWING NO.	REV.		
	PL	PL-1149	*		

REV.	DESCRIPTION	DATE	BY
* * *			

O:\AUTOCAD\PLUG-PL-SHOWPL-1149.dwg