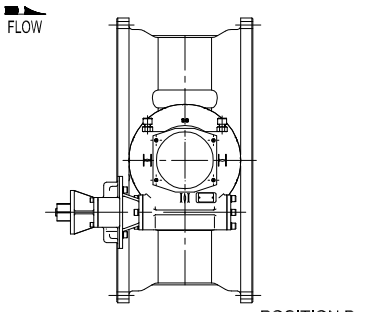
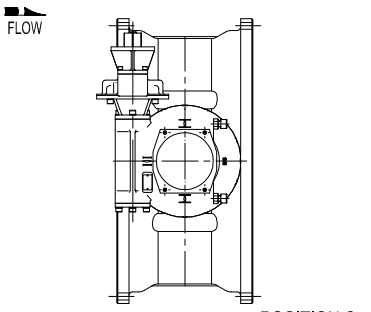


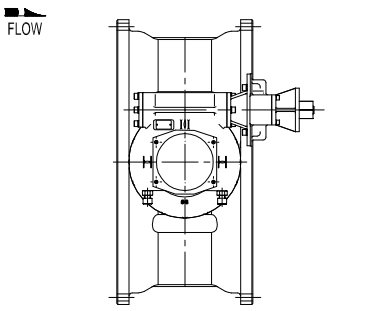
POSITION A - STANDARD



POSITION B



POSITION C



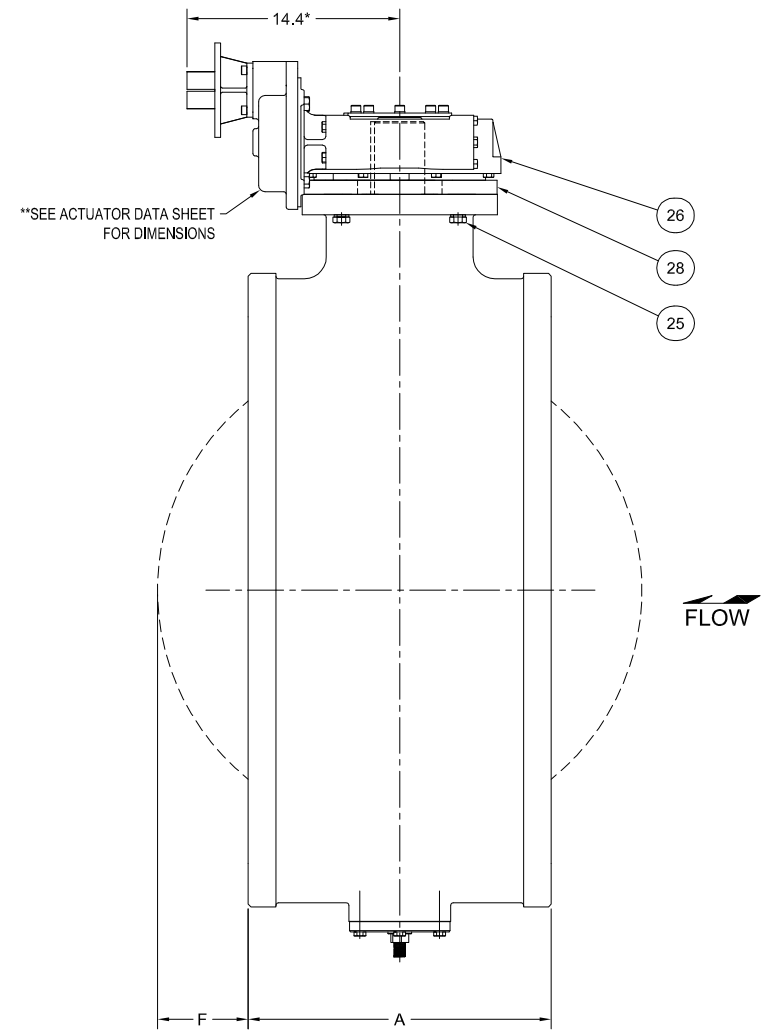
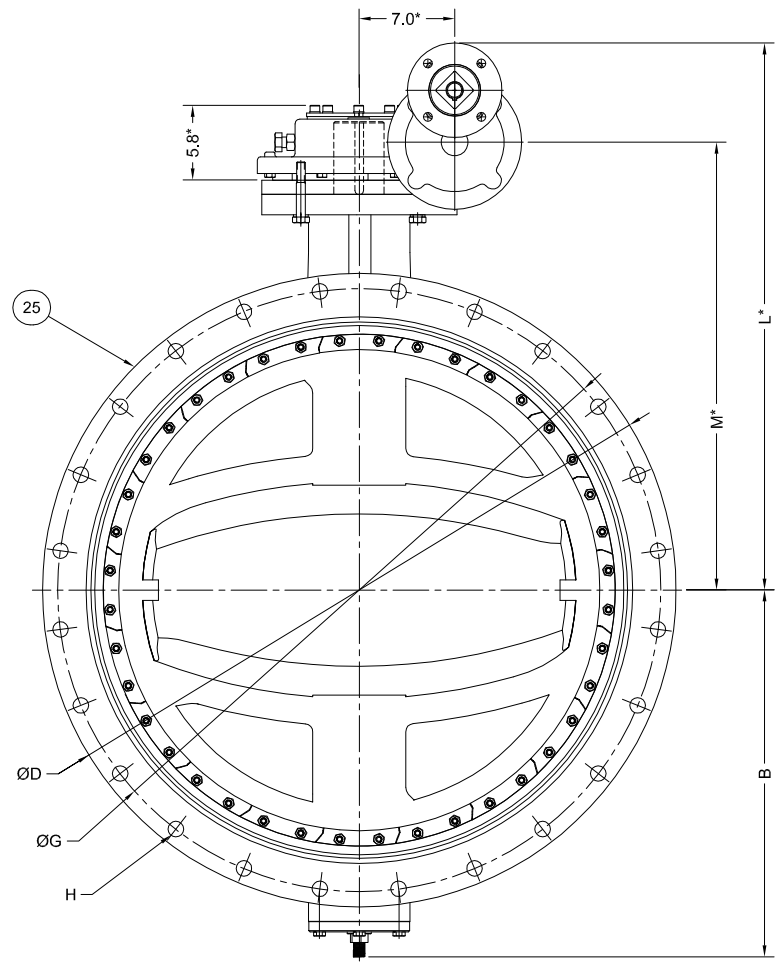
POSITION D

- TECHNICAL REQUIREMENTS:
- DESIGN STANDARD, AWWA C504
  - FLANGE DRILLING PER ANSI A21.1 AWWA C111 FOR BOTH CLASS 150B AND 250B VALVES.
  - DIMENSIONS IN INCHES, WEIGHT IN POUNDS.
  - WORKING PRESSURE 150 PSI OR 250 PSI BASED ON CLASS.
  - SHAFT DIAMETER AND BODY WALL THICKNESS PER AWWA C504.

SIZE	A	B	ØD	F (TYP)	ØG	H (QTY. - Ø)	L	M	MTG	WGT
24"	13.75	17.50	31.58	5.13	30.00	(16) - Ø7/8	31.50	29.00	FA16	1366
30"	18.00	22.91	39.12	6.00	36.88	(20) - Ø1 1/8	32.75	30.25	FA25/FA30	1975
36"	22.00	26.63	46.26	7.00	43.75	(24) - Ø1 1/8	36.50	34.00	FA25/FA30	2475

PARTS LIST	
ITEM NO.	DESCRIPTION
25	COMPLETE VALVE ASSEMBLY
26	GEARBOX ACTUATOR
27	ACTUATOR BOLTS w/ LOCK WASHERS
28	ADAPTOR PLATE *

\* NOTE:  
ADAPTOR PLATE MAY NOT BE  
REQUIRED ON ALL ASSEMBLIES



\*\*SEE ACTUATOR DATA SHEET  
FOR DIMENSIONS

OPTIONAL ACTUATOR POSITIONS  
CUSTOMER TO SPECIFY w/ORDER  
POSITION "D" SHOWN IN MAIN VIEW

DIMENSION MAY VARY. REFER TO MANUFACTURER'S ACTUATOR DATA

DIMENSIONS IN INCHES	
STANDARD TOLERANCES UNLESS OTHERWISE NOTED:	CASTING STOCK UNLESS OTHERWISE NOTED:
±.1	0.10 - 1.99
±.01	1.10 - 4.99
±.005	5.10 - 9.99
FRACTIONS ±.004	10.10 - 49.99
ANGLES ±.01°	50.00 > ±.08
DRAFTS: 3° MAX	
PER AREA: 14.00/1000 ±.002 FLATNESS: 0.004/1000	

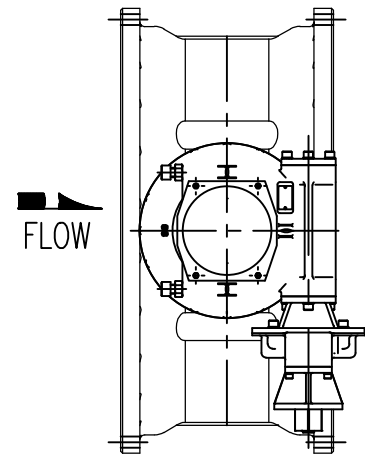
**GA INDUSTRIES, LLC**  
24" - 36" MECHANICAL JOINT BUTTERFLY VALVE  
w/ BURIED SERVICE ROTORK #W6R MANUAL GEARBOX ACTUATOR  
2" SQUARE NUT / 210:1 GEAR RATIO

SERIAL NO. 4320015854	DRAWN BY BRF
FIG. NUMBER 804	APPR. BY JT
DATE 06-06-2016	SCALE NTS
PROPERTY OF GA INDUSTRIES, LLC	
REFERENCES BF-1012	FILE BF
DRAWING NO. BF-1187	REV. *

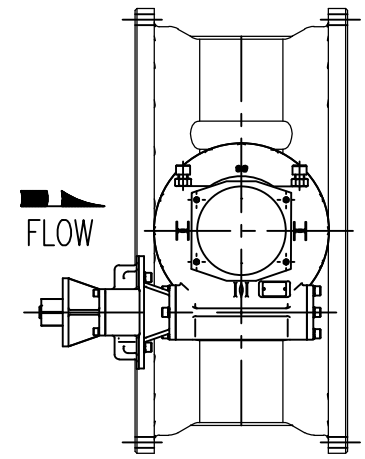
REV.	DESCRIPTION	DATE	BY

C:\Projects\Engineering\AutoCAD\Butterfly\BF-Show\BF-1187.dwg

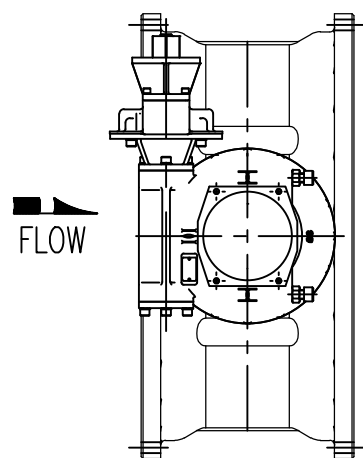
NO.	DESCRIPTION
26	GEARBOX ACTUATOR
27	ACTUATOR MOUNTING BOLTS
28	ACTUATOR SPACER PLATE



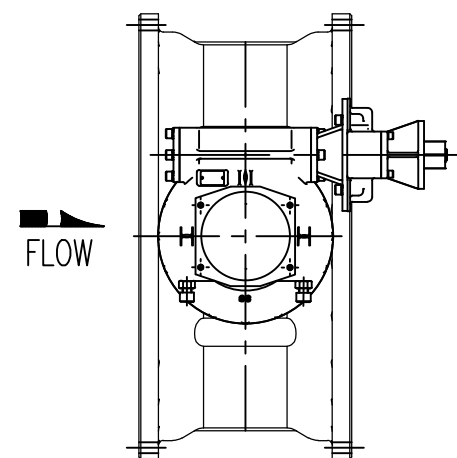
POSITION A



POSITION B

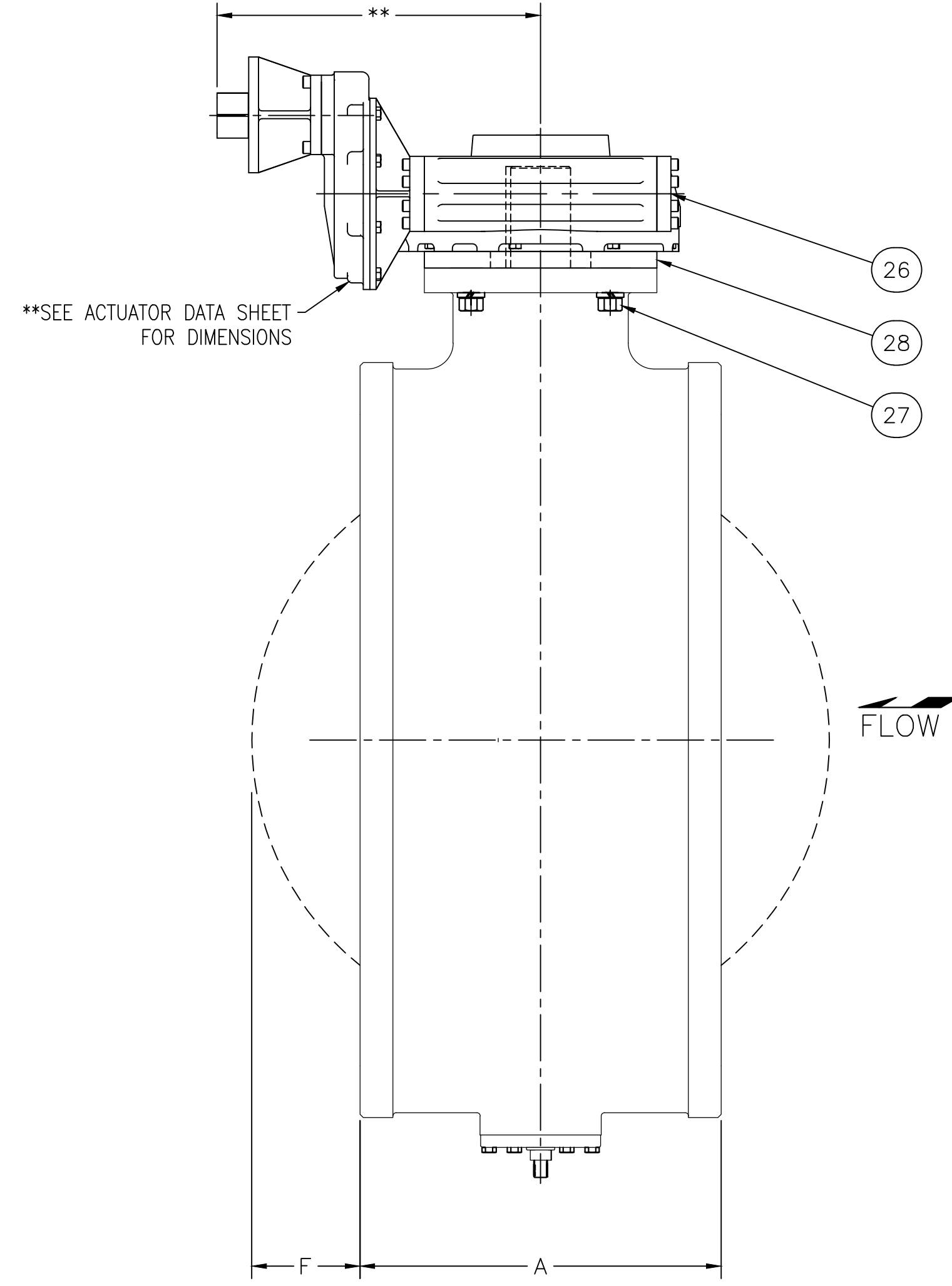
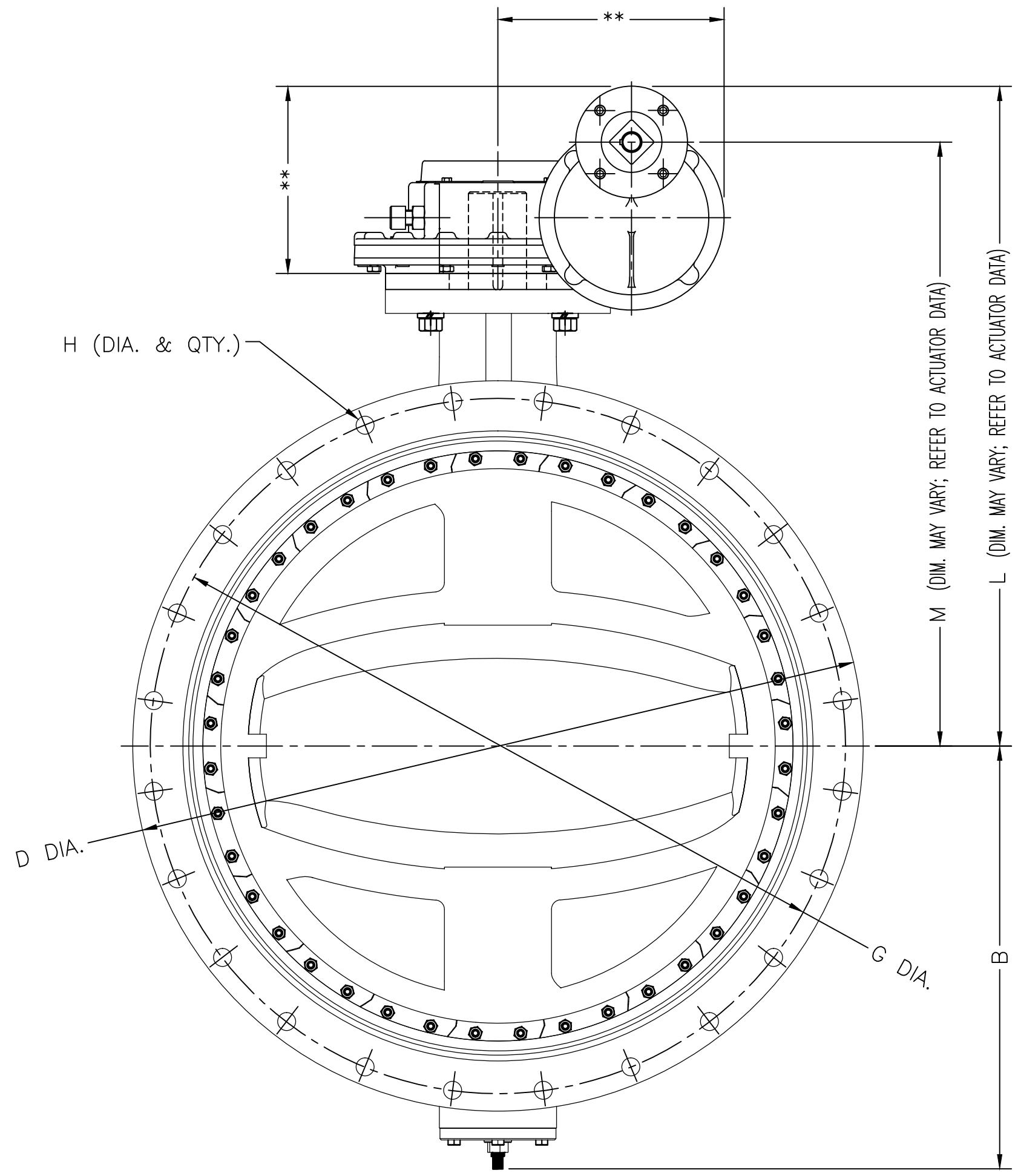


POSITION C



POSITION D

OPTIONAL ACTUATOR POSITIONS; CUSTOMER TO SPECIFY W/ORDER; POSITION "D" SHOWN IN MAIN VIEW.



- TECHNICAL REQUIREMENTS:
1. DESIGN STANDARD, AWWA C504
  2. FLANGE DRILLING PER ANSI A21.1 AWWA C111 FOR BOTH CLASS 150B AND 250B VALVES.
  3. DIMENSIONS IN INCHES, WEIGHT IN POUNDS.
  4. WORKING PRESSURE 150 PSI OR 250 PSI BASED ON CLASS.
  5. SHAFT DIAMETER AND BODY WALL THICKNESS PER AWWA C504.

SIZE	A	B	D DIA.	F TYP.	G DIA.	#-ØH	L	M	MTG	WGT
48"	24.00	34.88	60.00	12.00	57.50	(32)-Ø1 3/8	47.38	43.94	FA30/FA36	5350
42"	22.50	29.68	53.12	9.75	50.62	(28)-Ø1 3/8	43.56	40.12	FA25/FA30	4100

REV.	DESCRIPTION	DATE	BY

**GA INDUSTRIES, LLC**

42"- 48" MECHANICAL JOINT BUTTERFLY VALVE WITH BURIED SERVICE ROTORK #W7R MANUAL GEARBOX ACTUATOR

DIMENSIONS IN INCHES  
 STANDARD TOLERANCES (UNLESS OTHERWISE NOTED)  
 .X = ±.1  
 .XX = ±.01 <CTQ>  
 .XXX = ±.005 <CTQ>  
 FRACTIONS = ±1/64  
 ANGLES = ±1°  
 DRAFTS: 3° MAX  
 PER ANSI Y14.5M GD&T <332 FLATNESS, ROUNDNESS, POSITION>

SERIAL NO. 432000141	DRAWN BY SWR
FIG. NUMBER 804	APPR. BY *
DATE 08-13-2013	SCALE N.T.S.
PROPERTY OF GA INDUSTRIES, LLC	
REFERENCES BF-1012	FILE BF
DRAWING NO. BF-1128	REV. *

J:\AUTOCAD\BUTTERFLY\BF-SHOW\BF-1128.DWG