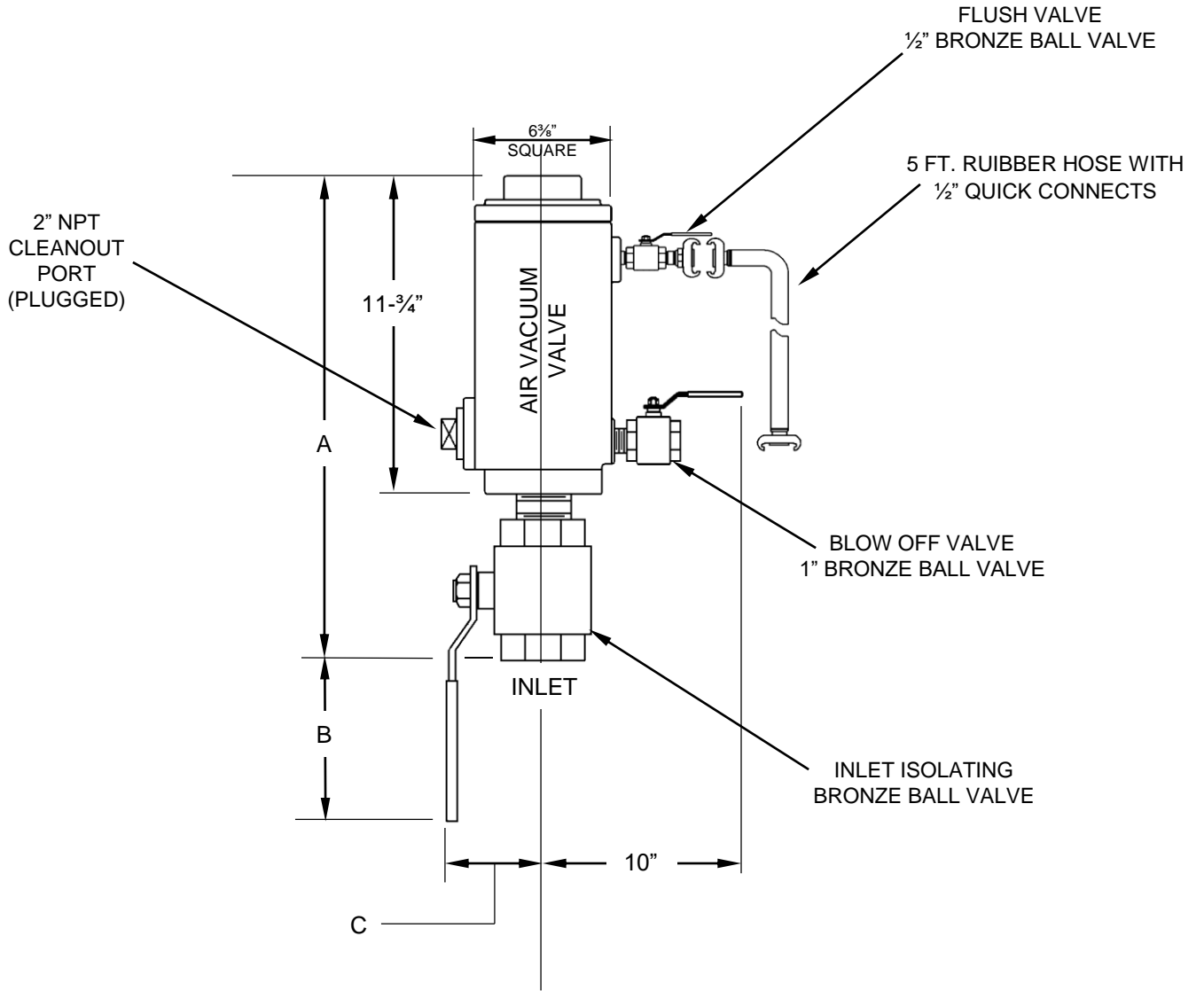


SIZE	INLET	OUTLET	AIR & VACUUM DRAWING	A	B	C	WEIGHT WITH FLUSH ATTACHMENTS
2" X 1"	2" NPT	1" NPT	EAV-7047W	17"	3"	4"	55 lbs
2" X 2"	2" NPT	2" NPT		20"	5"	5½"	61 lbs
3" x 2"	3" NPT	2" NPT					



Notes:

1. REFER TO DRAWING EAV-7047-W FOR AIR VALVE DETAILS

GA INDUSTRIES, a VAG Brand		
DATE: 5/22/10	DRAWN BY: WJN	
SEWAGE AIR & VACUUM VALVE WITH FLUSHING ATTACHMENTS		
FIGURE 939F	DRAWING NO. EAV-7047F-W	REV. A