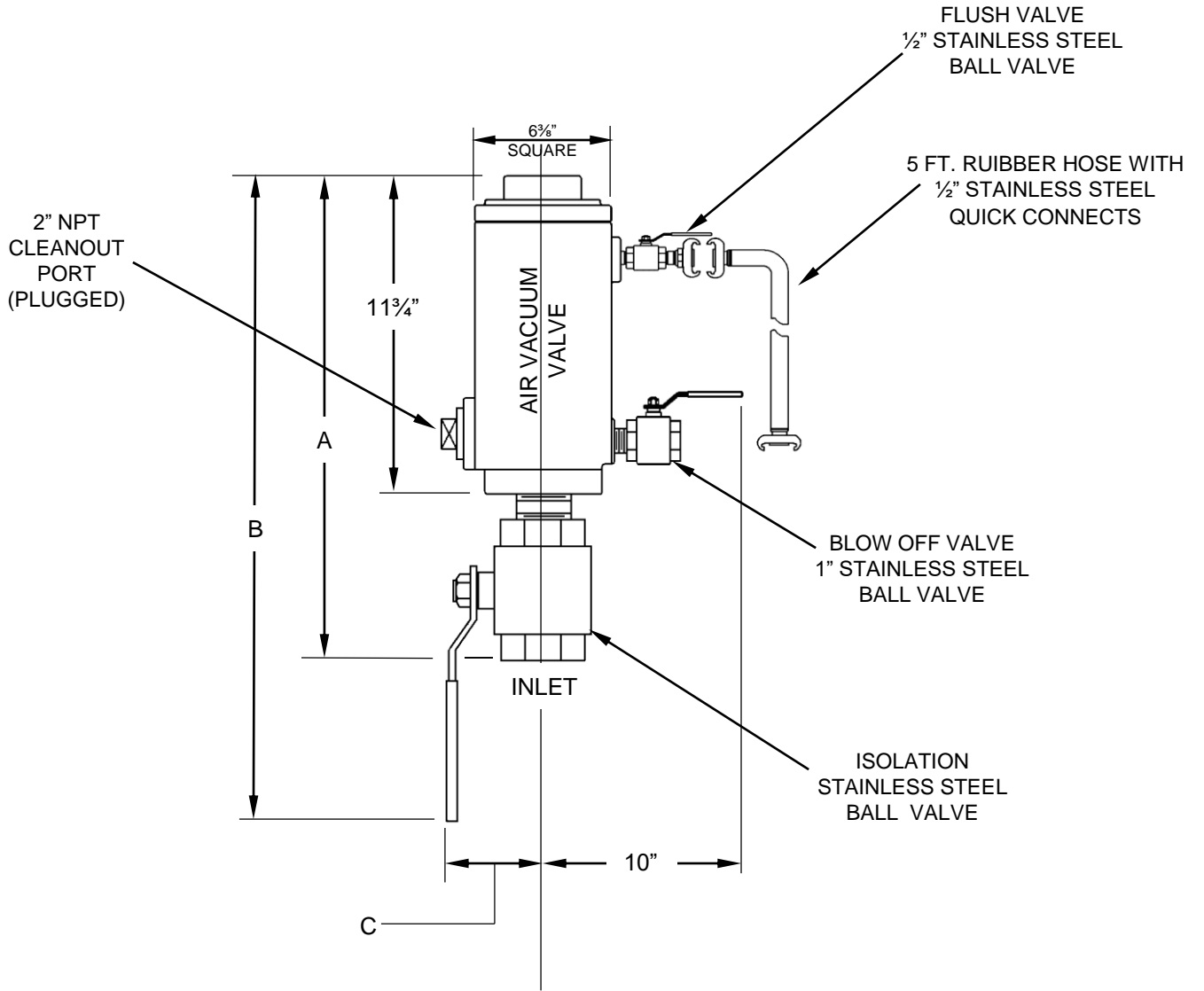


SIZE	INLET	OUTLET	AIR & VACUUM DRAWING	A	B	C	WEIGHT WITH FLUSH ATTACHMENTS
2" X 1"	2" NPT	1" NPT	EAV-7047S-W	17"	3"	4"	55 lbs
2" X 2"	2" NPT	2" NPT					
3" x 2"	3" NPT	2" NPT		20"	5"	5½"	61 lbs



Notes:

1. REFER TO DRAWING EAV-7047S-W FOR AIR VALVE DETAILS
2. ALL PIPE NIPPLES AND FITTINGS STAINLESS STEEL

<b>GA INDUSTRIES, LLC</b>		
DATE: 5/22/10	DRAWN BY: WJN	
<b>STAINLESS STEEL SEWAGE AIR &amp; VACUUM VALVE WITH FLUSHING ATTACHMENTS</b>		
<b>FIGURE 939SS-F</b>	DRAWING NO. <b>EAV-7047SF-W</b>	REV <b>A</b>