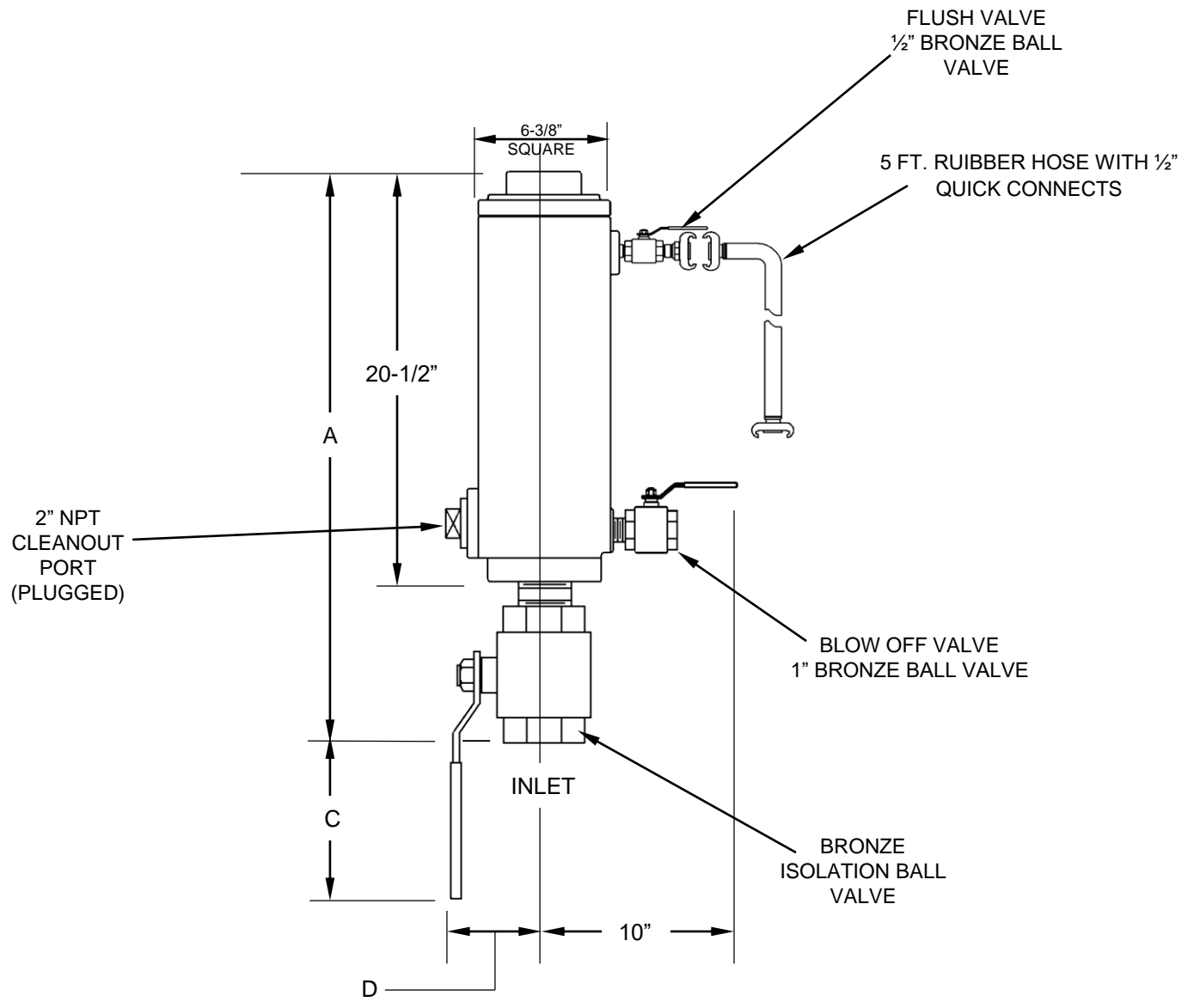


SIZE	INLET	OUTLET	AIR & VACUUM DRAWING	A	B	C	D	WEIGHT WITH FLUSH ATTACHMENTS
2" X 1"	2" NPT	1" NPT	EAV-7105W	26"	30"	3"	4"	75 lbs
2" X 2"	2" NPT	2" NPT		28"	34"	5"	5½"	81 lbs
3" X 2"	3" NPT	2" NPT						



<b>GA INDUSTRIES, a VAG Brand</b>		
DATE: 2/27/09	DRAWN BY: WJN	
<b>SEWAGE AIR &amp; VACUUM VALVE WITH FLUSHING ATTACHMENTS</b>		
<b>FIGURE 935F</b>	DRAWING NO. <b>EAV-7105F-W</b>	REV <b>A</b>