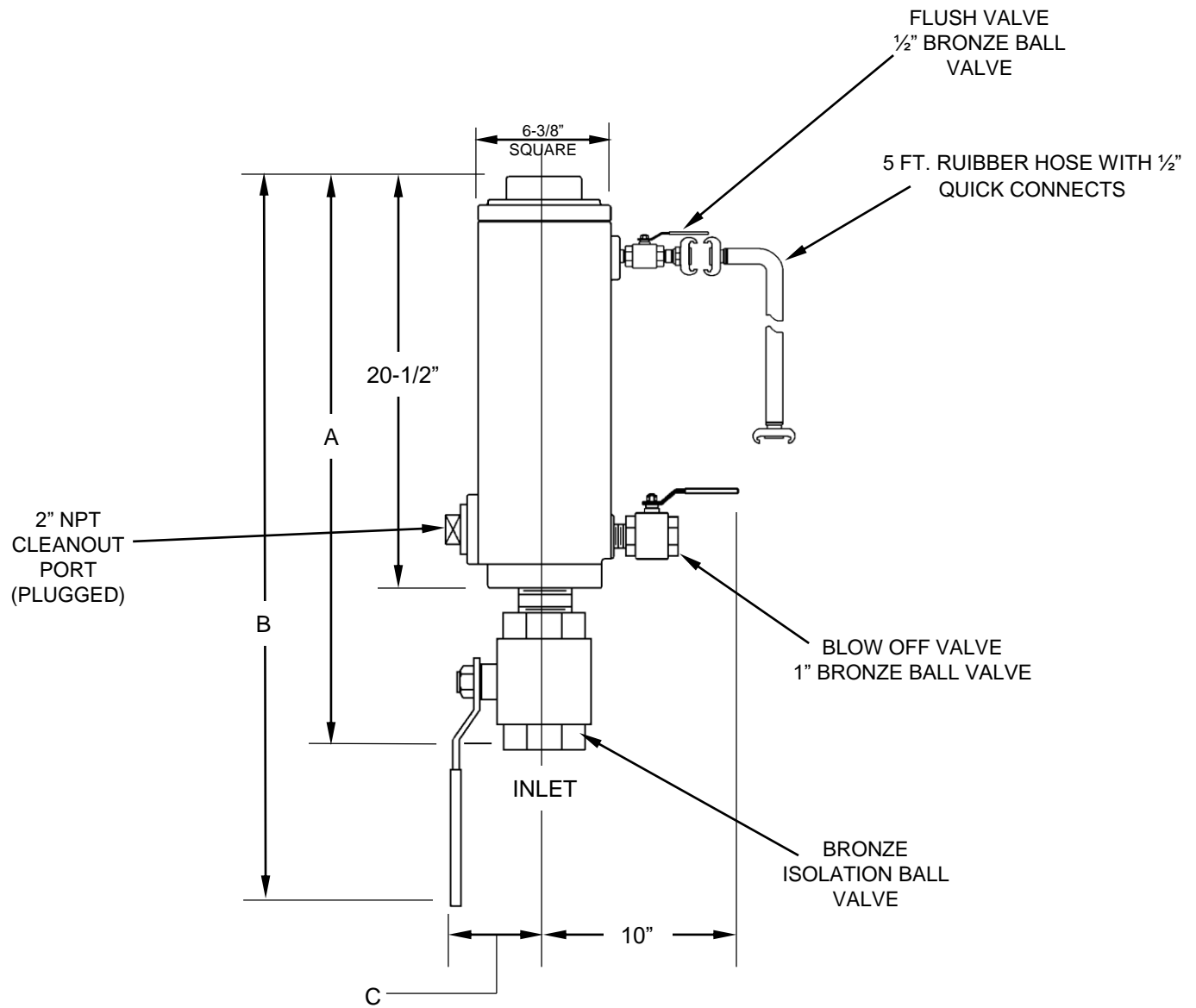


SIZE	INLET	OUTLET	COMBINATION AIR VALVE DRAWING	A	B	C	WEIGHT WITH FLUSH ATTACHMENTS
2" X 1"	2" NPT	1" NPT	ECAV-7104	26"	30"	4-1/2"	75 lbs
2" X 2"	2" NPT	2" NPT		28-1/2"	34"	5-1/2"	81 lbs
3" X 2"	3" NPT	2" NPT					



<b>GA INDUSTRIES, a VAG Brand</b>		
DATE:	5/29/19	DRAWN BY: WJN
<b>WASTEWATER COMBINATION AIR VALVE WITH FLUSHING ATTACHMENTS</b>		
<b>FIGURE 942F</b>	DRAWING NO. <b>ECAV-7104F-W</b>	REV <b>A</b>