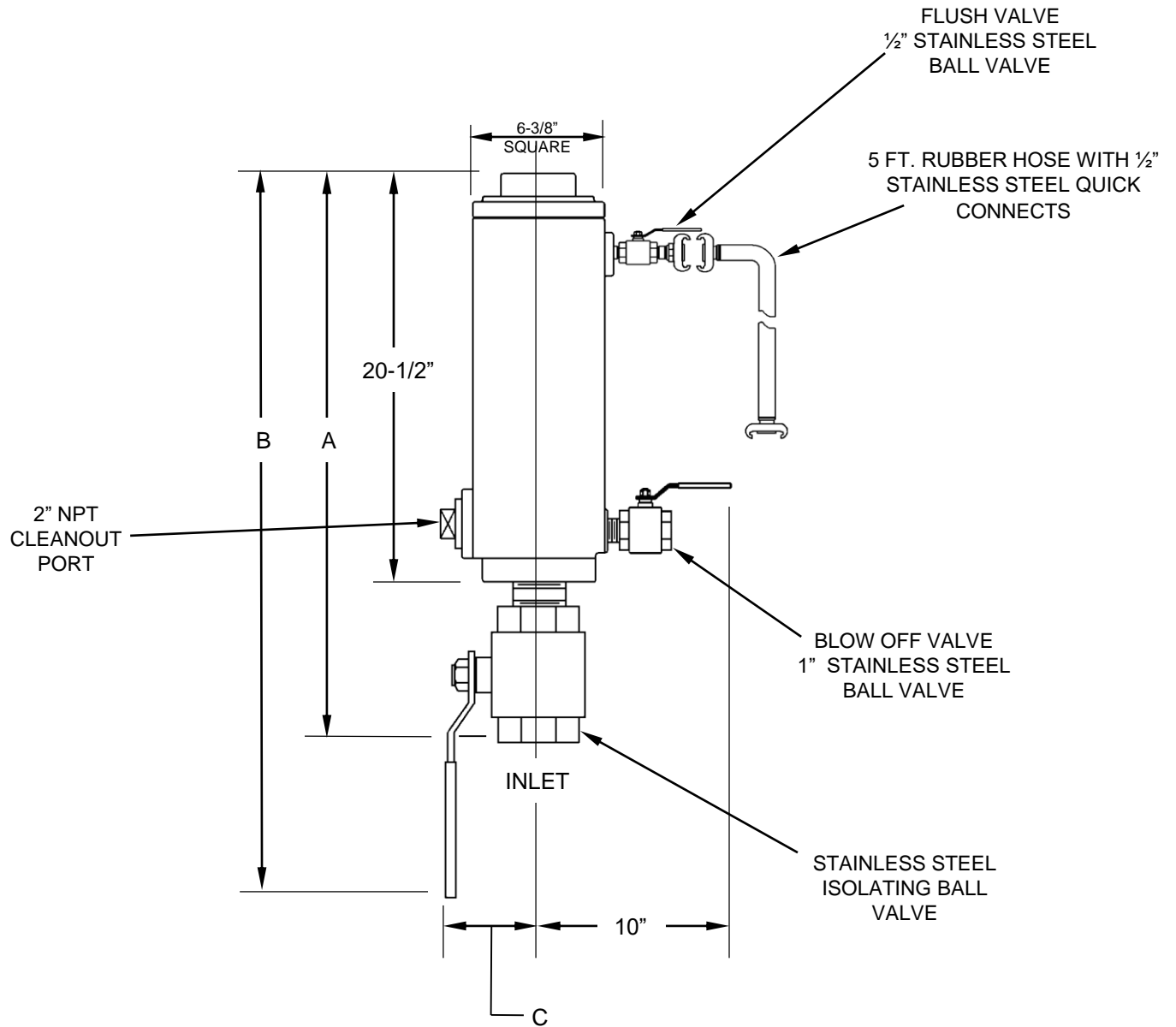


SIZE	INLET	OUTLET	COMBINATION AIR VALVE DRAWING	A	B	C	WEIGHT WITH FLUSH ATTACHMENTS
2" x 1"	2" NPT	1" NPT	EAV-7104S-W	26"	29"	4"	75 lbs
2" x 2"	2" NPT	2" NPT		29"	34"	5½"	87 lbs
3" x 2"	3" NPT	2" NPT					



NOTES

1. PIPE FITTINGS AND NIPPLES – STAINLESS STEEL
2. QUICK CONNECTS COUPLINGS – STAINLESS STEEL

GA INDUSTRIES, a VAG Brand		
DATE: 5/29/19	DRAWN BY: WJN	
STAINLESS STEEL SEWAGE COMBINATION AIR VALVE WITH STAINLESS STEEL FLUSHING ATTCHMENTS		
FIGURE 942SS-F	DRAWING NO. ECAV7104SF-W	REV. A