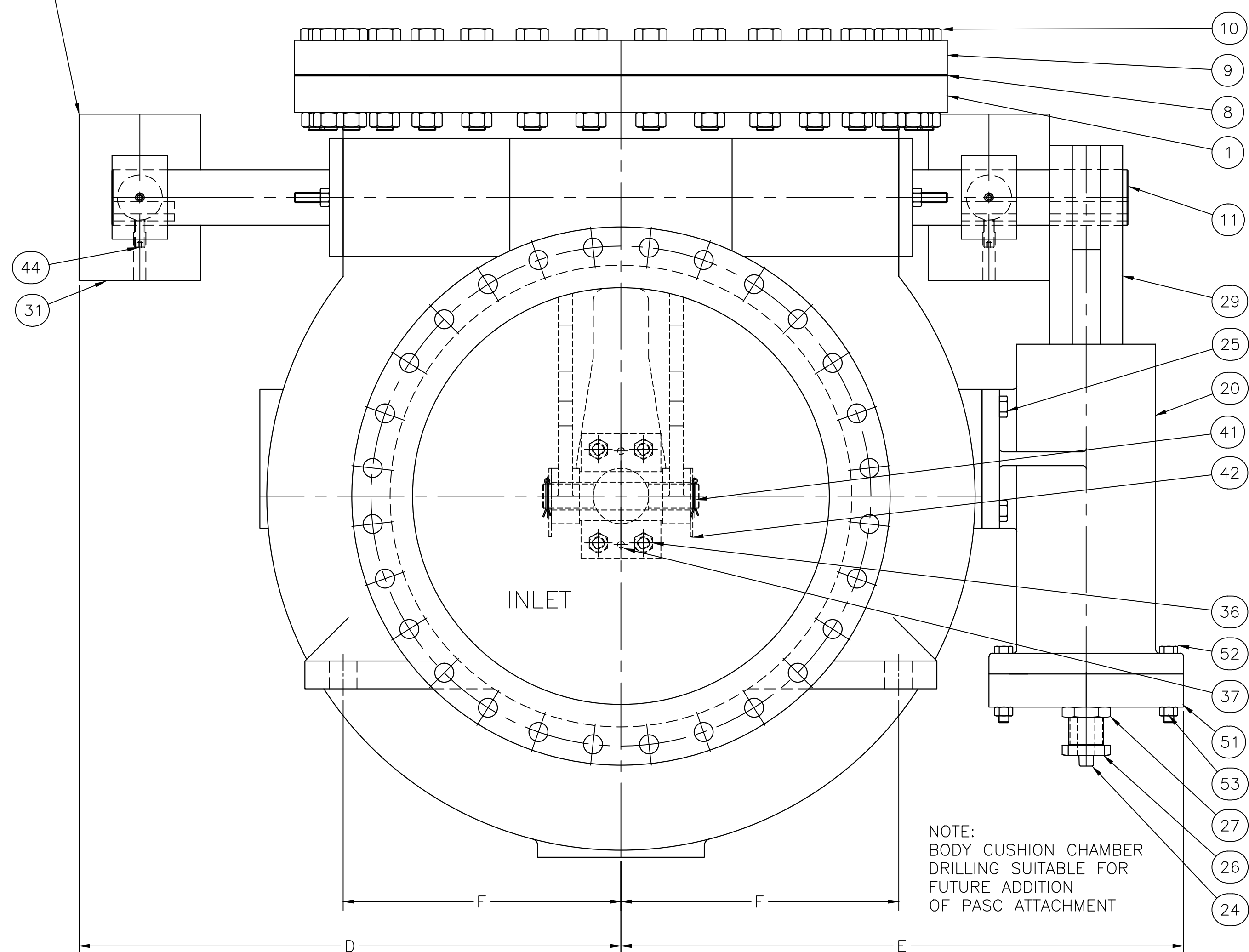


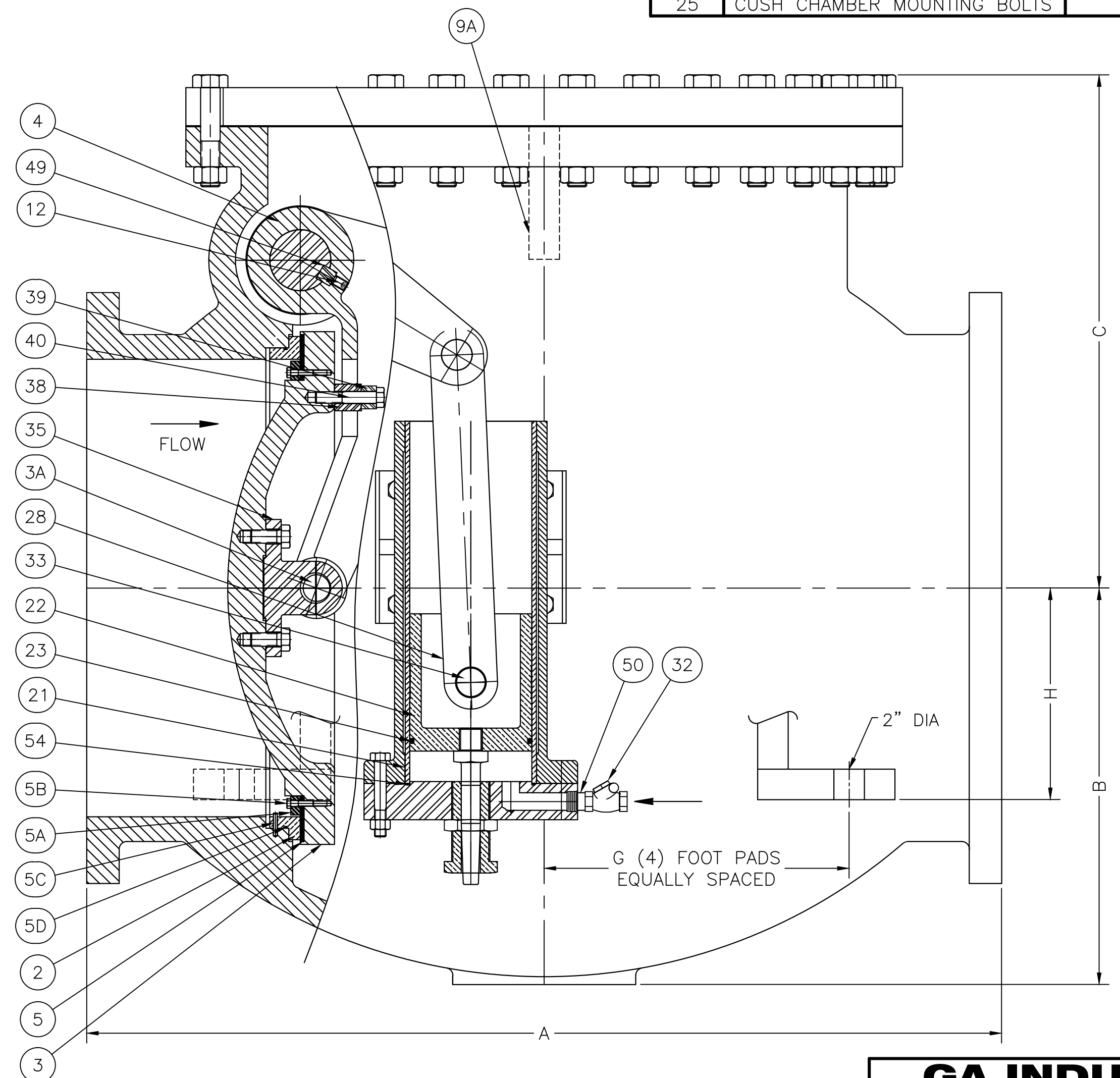
NOTE:
VALVES WITH METAL TO METAL SEATS.
PART NO. 5 IS THE DISC METAL SEAT,
PART NO. 5B IS THE DISC METAL SEAT SCREWS
& PART NO. 5A IS NOT USED.

| NO. | DESCRIPTION | NO. | DESCRIPTION |
|-----|-----------------------------|-----|-----------------------------|
| 1 | BODY | 26 | ADJUSTING SLEEVE |
| 2 | BODY SEAT | 27 | ADJUSTING LOCKNUT |
| 3 | DISC | 28 | CHAMBER LINK |
| 3A | DISC HINGE PIN | 29 | CHAMBER LEVER |
| 4 | DISC ARM | 30 | COUNTERWEIGHT ARM |
| 5 | SEAT RING | 31 | COUNTERWEIGHT |
| 5A | SEAT RING FOLLOWER | 32 | CHECK VALVE |
| 5B | SEAT FOLLOWER SCREWS | 33 | LINK PIN |
| 5C | SEAT RING RETAINING PINS | 34 | LEVER PIN COTTER PIN |
| 5D | SEAT SEAL | 34A | LEVER PIN WASHER |
| 8 | COVER GASKET | 35 | DISC HINGE BRACKET |
| 9 | COVER | 36 | DISC HINGE MOUNTING SCREWS |
| 9A | DISC STOP | 37 | DISC HINGE DOWEL PINS |
| 10 | COVER BOLTS | 38 | LOWER DISC GUIDE |
| 11 | SHAFT | 39 | UPPER DISC GUIDE |
| 12 | DISC ARM SET SCREWS | 40 | DISC GUIDE SCREWS |
| 13 | INNER BUSHING | 41 | DISC HINGE PIN COTTER PIN |
| 14 | OUTER BUSHING | 42 | DISC HINGE PIN WASHER |
| 15 | GLAND | 44 | COUNTERWEIGHT SET SCREWS |
| 15A | GLAND COVER | 45 | LEVER PIN |
| 16 | GLAND STUDS | 46 | COVER PLUG |
| 17 | GLAND PACKING | 47 | LEVER KEY |
| 18 | COUNTERWEIGHT ARM SET SCREW | 48 | COUNTERWEIGHT ARM KEY |
| 19 | LEVER SET SCREW | 49 | DISC ARM KEY |
| 20 | CUSHION CHAMBER | 50 | PIPE NIPPLE |
| 21 | CUSHION CHAMBER LINER | 51 | CUSHION CHAMBER COVER |
| 22 | PISTON | 52 | CUSHION CHAMBER COVER BOLTS |
| 23 | PISTON O-RING | 53 | CUSHION CHAMBER COVER NUTS |
| 24 | PLUNGER ROD | 54 | CUSHION CHAMBER COVER SEAL |
| 25 | CUSH CHAMBER MOUNTING BOLTS | | |

NOTE:
SECOND COUNTERWEIGHT ARM AND WEIGHTS
ARE USED ONLY WHEN NECESSARY.



NOTE:
BODY CUSHION CHAMBER
DRILLING SUITABLE FOR
FUTURE ADDITION
OF PASC ATTACHMENT



NOTE: FLANGES AVAILABLE PER ANSI, BRITISH AND ISO STANDARDS
NOTE: DIMENSION 'A' ON 36" VALVE WITH 250 LB FLANGES IS 67"
(FIGURE NO. 250-U)

| | DIMENSIONS | | | | | | | |
|-----|------------|----|----|----|----|--------|--------|----|
| | A | B | C | D | E | F | G | H |
| 30" | 60 | 26 | 33 | 36 | 43 | 20 | 20 | 14 |
| 36" | 63 | 30 | 36 | 34 | 45 | 22 3/4 | 22 3/4 | 14 |

GA INDUSTRIES, LLC
30" & 36" CUSHION SWING CHECK VALVE
HORIZONTAL INSTALLATION
W/SHAFT PACKING GLAND

| | | | |
|---|--------------------|----------------|-------------|
| STANDARD TOLERANCES (UNLESS OTHERWISE NOTED) | SERIAL NO. | SCALE | DRAWN BY |
| FINISHED SURFACES ONLY DIMENSIONS SHOWN IN INCHES | * | NTS | RRS |
| x = ±.02 xx = ±.01 xxx = ±.002 FRACTIONS 1/16" ANGLES 1/2° FINISH XX RMS | REFERENCES | EFFECTIVE DATE | APPR. BY |
| | LYSC0163 C-1409 | 03-04-1992 TO | |
| | FIG. NUMBER | FILE | DRAWING NO. |
| | 250 | C | C-1008 |
| | | | REV. |
| | | | A |

| REV. | DESCRIPTION | DATE | BY |
|------|---------------------|------------|-----|
| A | REDRAWN ON AUTO CAD | 01-07-2011 | HGM |

J: GA-VALVE\GA-SHOW\C-1008-A.DWG