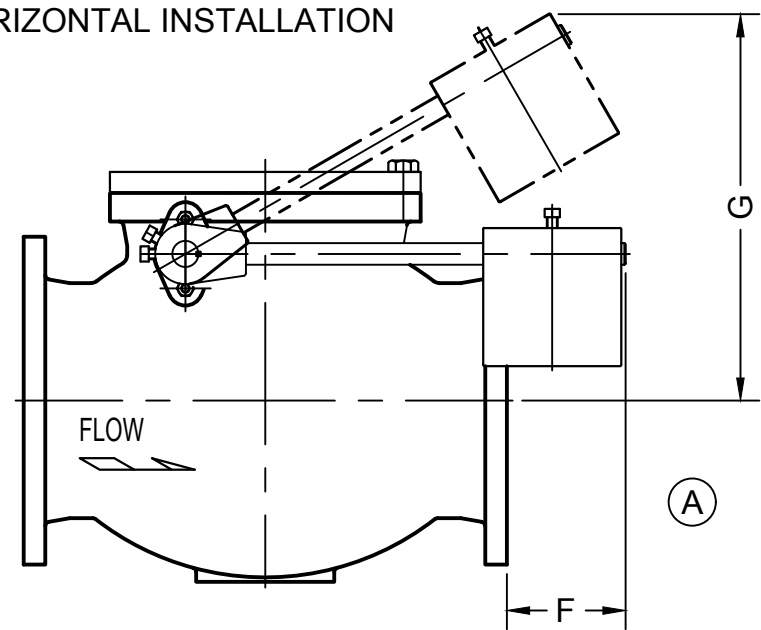


	4 X 8		6 X 10		8 X 12	
	IN	MM	IN	MM	IN	MM
A*	13 1/2	343	18 7/8	479	22 1/4	565
B	8 1/2	216	9	229	12	305
C	5 1/2	140	7	178	8	203
D	11	279	12	305	14	356
E	5	127	7	178	8	203
F	4	102	3	77	3	77
G	16	406	19	483	21	533
H	8 1/2	216	10 5/8	270	-	-

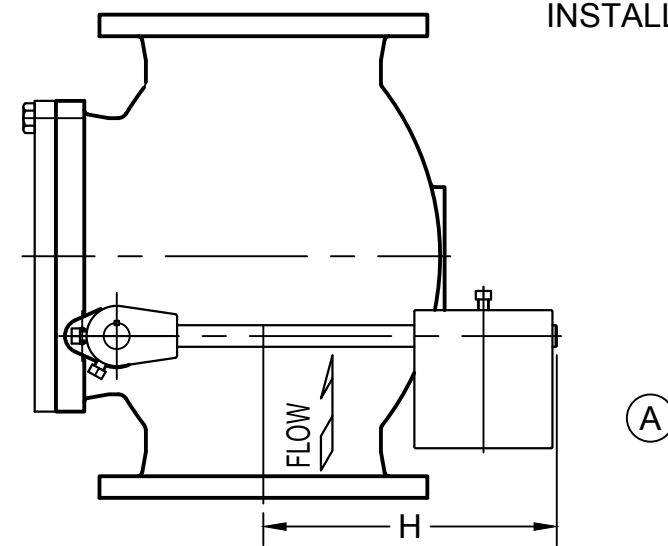
* "A" DIMENSION OF VALVES WITH RAISED FACE DOES NOT INCLUDE RAISED FACE HEIGHT

(A)

HORIZONTAL INSTALLATION

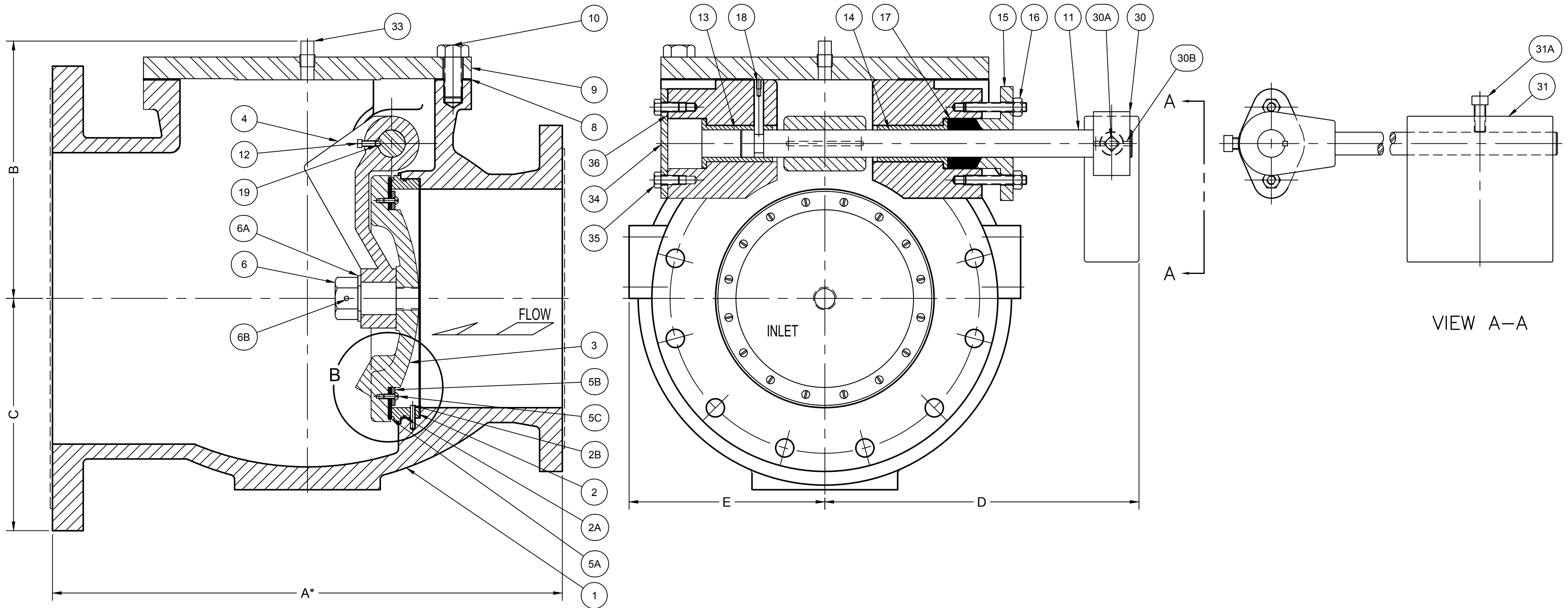


VERTICAL INSTALLATION



NOTE: SUFFIX "A" USED AFTER FIGURE NUMBER FOR VERTICAL INSTALLATION (FIG.NO.250-DA)

NO.	PART NAMES	NO.	PART NAMES
1	BODY	12	DISC ARM SET SCREW
2	BODY SEAT	13	INNER BUSHING
2A	SEAT O RING	14	OUTER BUSHING
2B	SEAT PIN	15	GLAND
3	DISC & CENTER PIN	16	GLAND STUDS
4	DISC ARM	17	GLAND PACKING
5A	RENEWABLE SEAT	18	SHAFT LOCK PIN
5B	SEAT FOLLOWER	19	DISC ARM KEY
5C	SEAT SCREWS	30	COUNTERWEIGHT ARM
5D	METAL SEAT WASHER	30A	COUNTERWEIGHT ARM SET SCREWS
6	DISC NUT	30B	COUNTERWEIGHT ARM KEY
6A	DISC NUT WASHER	31	COUNTERWEIGHT
6B	DISC NUT PIN	31A	COUNTERWEIGHT SET SCREW
8	COVER GASKET	33	COVER PLUG (14"-20" VALVES ONLY)
9	COVER	34	SHAFT END PLATE
10	COVER BOLTS	35	SHAFT END PLATE BOLTS
11	SHAFT	36	SHAFT END PLATE SEAL



VIEW A-A

REV.	DESCRIPTION	DATE	BY
B	REMOVED SIZES 3X6, 10X14, 12X16, 14X18, & 16X20	08-09-2018	JH
A	ADD SIZES TO TITLE BLOCK; ELIMINATE FIGURE NUMBER TABLE; RE-DRAWN IN AUTOCAD; ADD DIMENSIONS F, G, & H; ADDED DIMENSIONS FOR 12 X 16, 14 X 18, & 16 X 20	10-30-2013	BRF

GA INDUSTRIES, LLC
 3" - 16" DOUBLE INCREASING LEVER AND WEIGHT SWING CHECK VALVE ASSEMBLY

DIMENSIONS IN INCHES
 STANDARD TOLERANCES (UNLESS OTHERWISE NOTED):
 X = ±.1
 XXX = ±.01
 XXXX = ±.005
 FRACTIONS = ±1/64
 ANGLES = ±1°
 DIMENSIONS: .3" MAX
 PER ANSI Y14.5M GD&T -302 FLATNESS, ROUNDNESS, POSITION

SERIAL NO.	FIG. NUMBER	DATE	PROPERTY OF	REFERENCES	FILE	DRAWING NO.	REV.
	222D	10-29-1987	GA INDUSTRIES, LLC	C-1363-A	C4	C-1164	B

I:\Autocad\GA-Valve\GA-Show\IC-1164-B.dwg