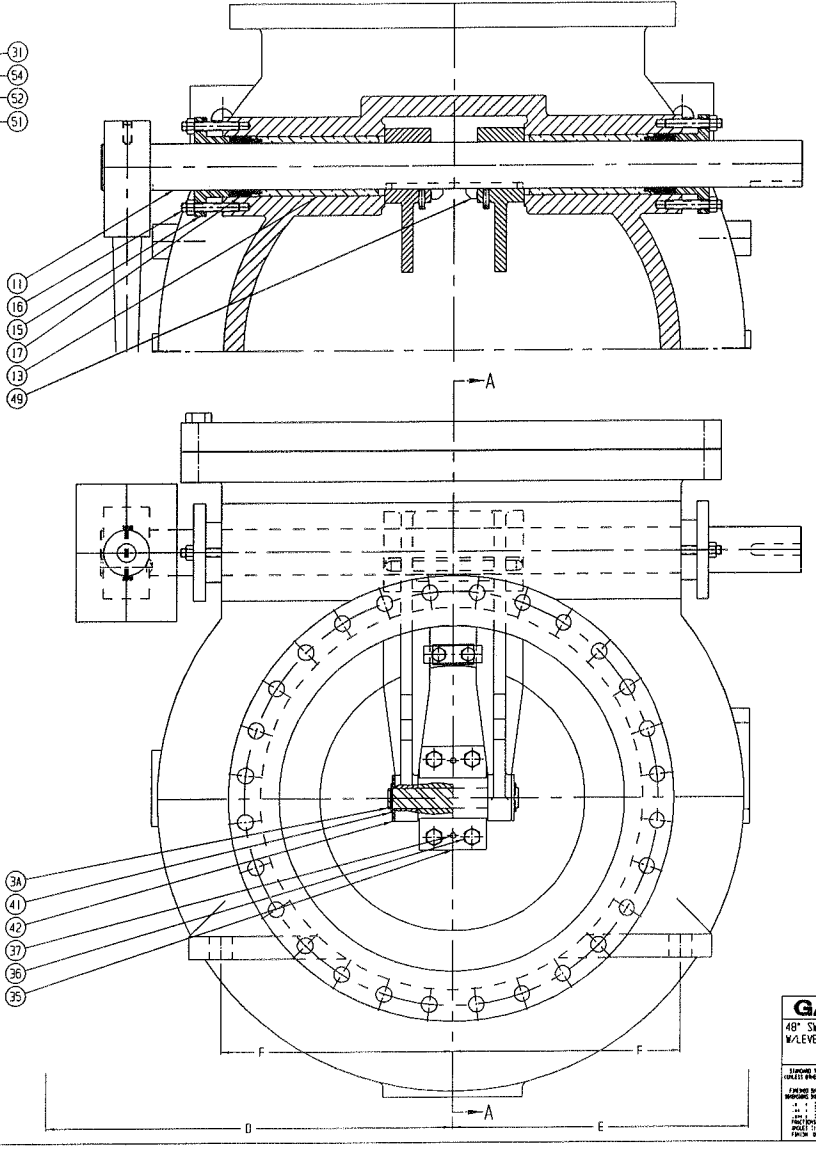
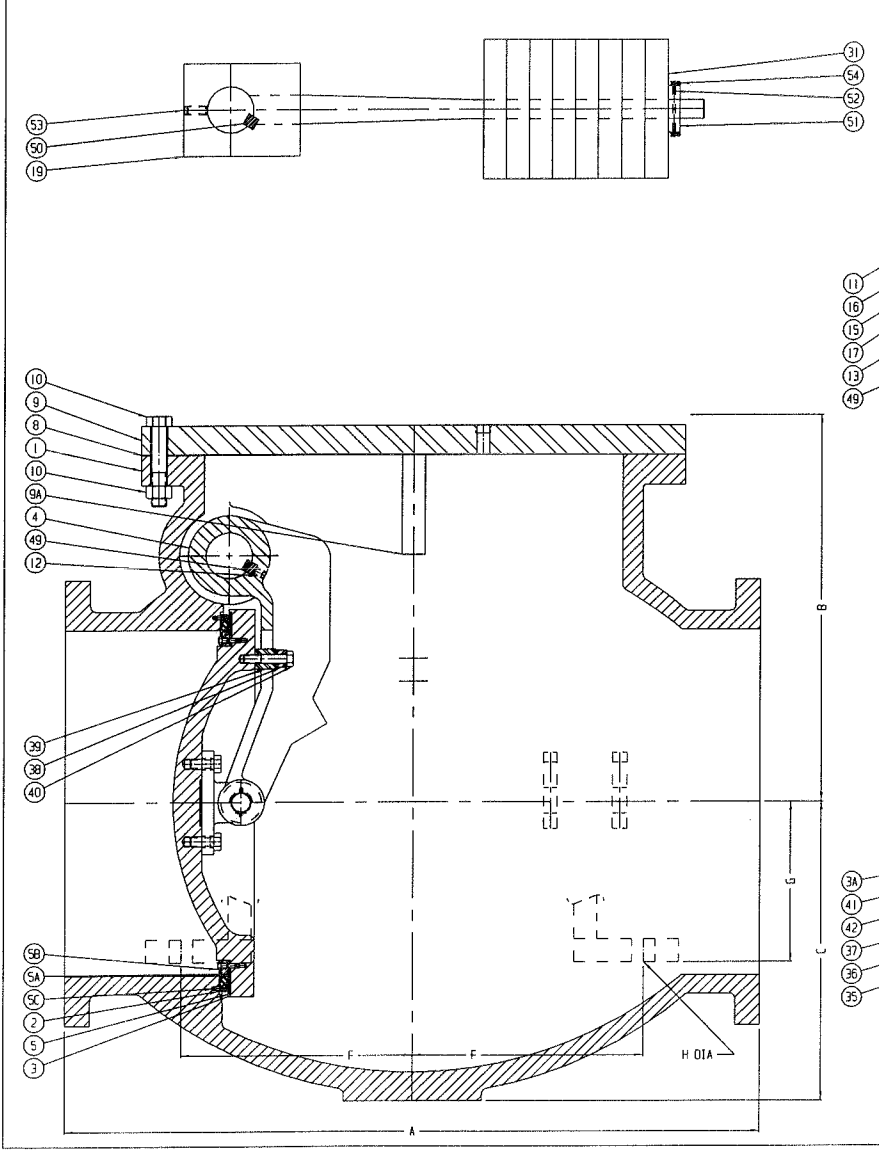
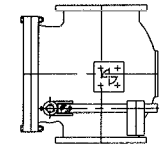


	A	B	C	D	E	F	G	H
48"	76	47	35 1/2	47	41	26	24	2

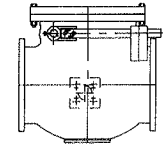
NOTE: DIMENSION 'A' ON VALVES WITH RAISED FACE FLANGES DOES NOT INCLUDE THE RAISED FACE HEIGHT.



REV	DESCRIPTION	DATE	BY	NO.	PART NAMES
				1	BODY
				2	BODY SEAT
				3	DISC
				3A	DISC HINGE PIN
				4	DISC ARM
				5	SEAT RING
				5A	SEAT RING FOLLOWER
				5B	SEAT RING FOLLOWER SCREWS
				5C	BODY SEAT SCREWS
				8	COVER GASKET
				9	COVER
				9A	DISC STOP
				10	COVER BOLTS
				11	SHAFT
				12	DISC ARM SET SCREW
				13	INNER SHAFT BUSHING
				15	GLAND
				16	GLAND STUDS
				17	GLAND PACKING
				19	COUNTERWEIGHT ARM
				31	COUNTERWEIGHT
				35	DISC HINGE BEARING
				36	DISC HINGE CAP SCREWS
				37	DISC HINGE DOWEL PINS
				38	UPPER DISC GUIDE
				39	LOWER DISC GUIDE
				40	DISC GUIDE SCREWS
				41	DISC HINGE PIN COTTER PIN
				42	DISC HINGE PIN WASHERS
				49	DISC ARM GIB HEAD KEY
				50	COUNTERWEIGHT ARM KEYS
				51	COUNTERWEIGHT RETAINER RING
				52	COUNTERWEIGHT RETAINER PINS
				53	COUNTERWEIGHT ARM SET SCREW
				54	COUNTERWEIGHT RETAINER PINS



VERTICAL INSTALLATION



HORIZONTAL INSTALLATION

GA INDUSTRIES, INC.					
48" SWING CHECK VALVE W/LEVER & WEIGHT					
DESIGNED BY: J.F.	SERIAL NO.	SCALE	DRAWN BY: HGH		
CHECKED BY: J.F.	NONE	NONE	APP. BY: J.F.		
DATE: 9-21-01	REFERENCES	EFFECTIVE DATE: 9-21-01	TO:		
FIG. NUMBER: 220-0	FILE: C	DRAWING NO.: C-1326	REV:		

P: GA VALVE GA-500N C-1326-PRT