

NOTES:

1. REFER TO DRAWING EAV-7132.01 FOR LIST OF STANDARD MATERIALS
2. DIMENSIONS AND WEIGHT ARE APPROXIMATE

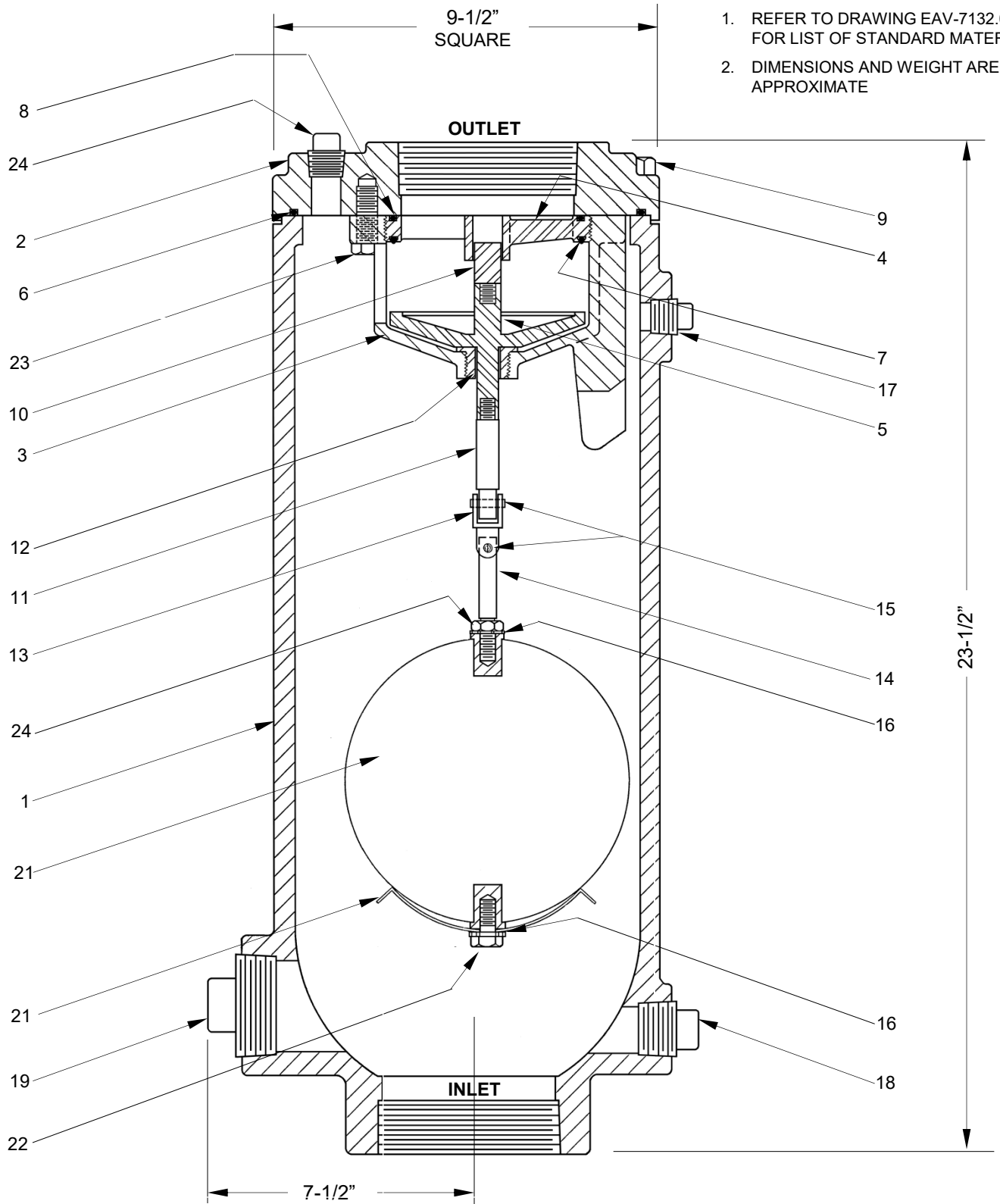


FIGURE NUMBER	INLET	OUTLET	MAX WORKING PRESSURE	PRESSURE RATING	WEIGHT
935	3" NPT	3" NPT	200 PSI	200 PSI	170 LBS.
	4" NPT	4" NPT			

GA INDUSTRIES a +GF+ Brand		
DATE:	3/17/09	DRAWN BY:
		WJN
3" & 4" NPT SEWAGE AIR & VACUUM VALVE		
FIGURE 935		DRAWING NO.
		EAV-7132W
		REV
		B

LIST of STANDARD MATERIALS
3" & 4" Figure 935
Drawings EAV7132-W, EAV7132.01A-W

ITEM	NAME	MATERIAL
1	Body	Cast Iron, ASTM A126 Class B*
2	Cover	Cast Iron, ASTM A126 Class B*
3	Cage	316 Stainless Steel
4	Seat	316 Stainless Steel
5	Plug	316 Stainless Steel
6	Cover O-Ring	Buna-N
7	Renewable Seat	Buna-N
8	Cage O-Ring	Buna-N
9	Cover Bolt	ASTM A307 Zinc Plated Steel (Optional 316SS)
10	Upper Plug Extension	316 Stainless Steel
11	Connector	316 Stainless Steel
12	Bushing	316 Stainless Steel
13	Universal Coupling	316 Stainless Steel
14	Float Rod	316 Stainless Steel
15	Spirol Pin	316 Stainless Steel
16	Lock Washer	410 Stainless Steel
17	½" Pipe Plug	Steel
18	1" Pipe Plug	Malleable Iron
19	2" Pipe Plug	Cast Iron
20	Float Ball	316 Stainless Steel
21	Float Hood	316 Stainless Steel
22	Float Screw	18-8 Stainless Steel
23	Cage Bolt	18-8 Stainless Steel
24	Hex Nut	18-8 Stainless Steel

* Lined and coated with NSF-61 certified epoxy

GA INDUSTRIES a +GF+ Brand		
DATE:	3/17/09	DRAWN BY: WJN
3" & 4" SEWAGE AIR & VACUUM VALVE LIST OF STANDARD MATERIALS		
FIGURE 935	DRAWING NO. EAV7132.01	REV A