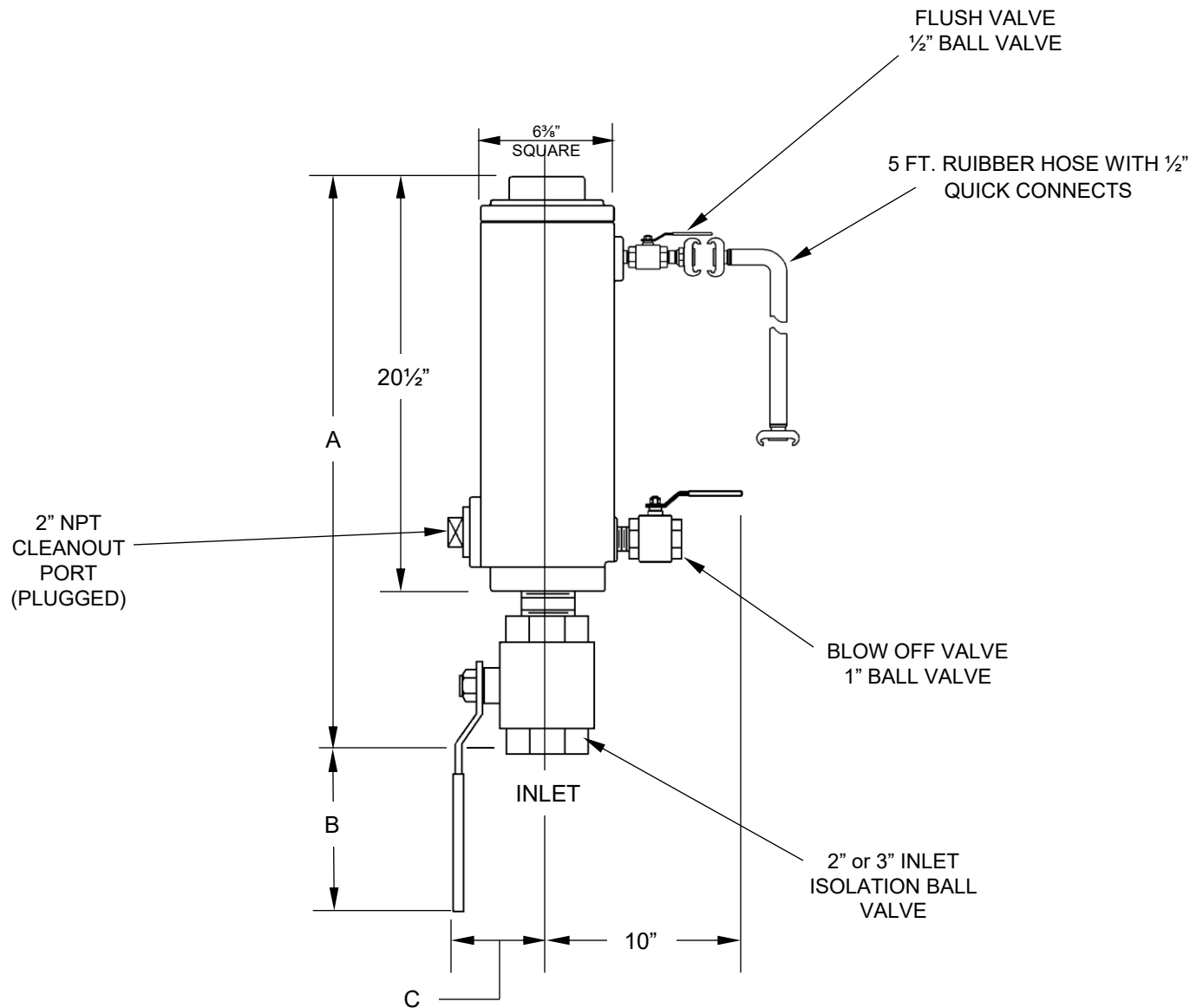


| SIZE | INLET | OUTLET | A | B | C | WEIGHT WITH FLUSH ATTACHMENTS |
|---------|--------|--------|---------|-----|--------|-------------------------------|
| 2" X 1" | 2" NPT | 1" NPT | 26" | 30" | 4-1/2" | 75 lbs. |
| 2" X 2" | 2" NPT | 2" NPT | | | | |
| 3" x 2" | 3" NPT | 2" NPT | 28-1/2" | 34" | 5-1/2" | 90 lbs. |



Notes:

1. Refer to drawing Eav-7105W (Figure 935) or EAV-7105SW (Figure 935SS Durovent™) for air vacuum valve details
2. Dimensions in inches, weight in pounds, and are approximate.

| | | |
|---|--------|---|
| GA INDUSTRIES a +GF+ Brand | | |
| DATE: | 4/1/09 | DRAWN BY: WJN |
| WASTEWATER AIR & VACUUM VALVE WITH FLUSHING ATTCHMENTS | | |
| FIGURES 935F, 935SSF | | DRAWING NO. EAV-7105F-W REV B |