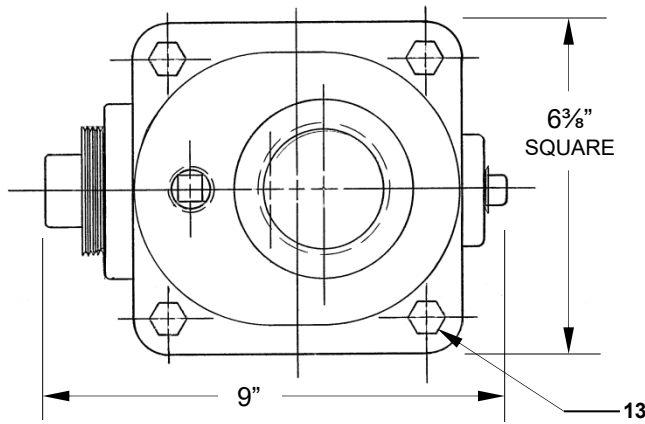


LIST OF STANDARD MATERIALS

1. FIGURE 942 - ECAV-7104.01
2. FIGURE 942SS DUROVENT™ - ECAV-7104S.01



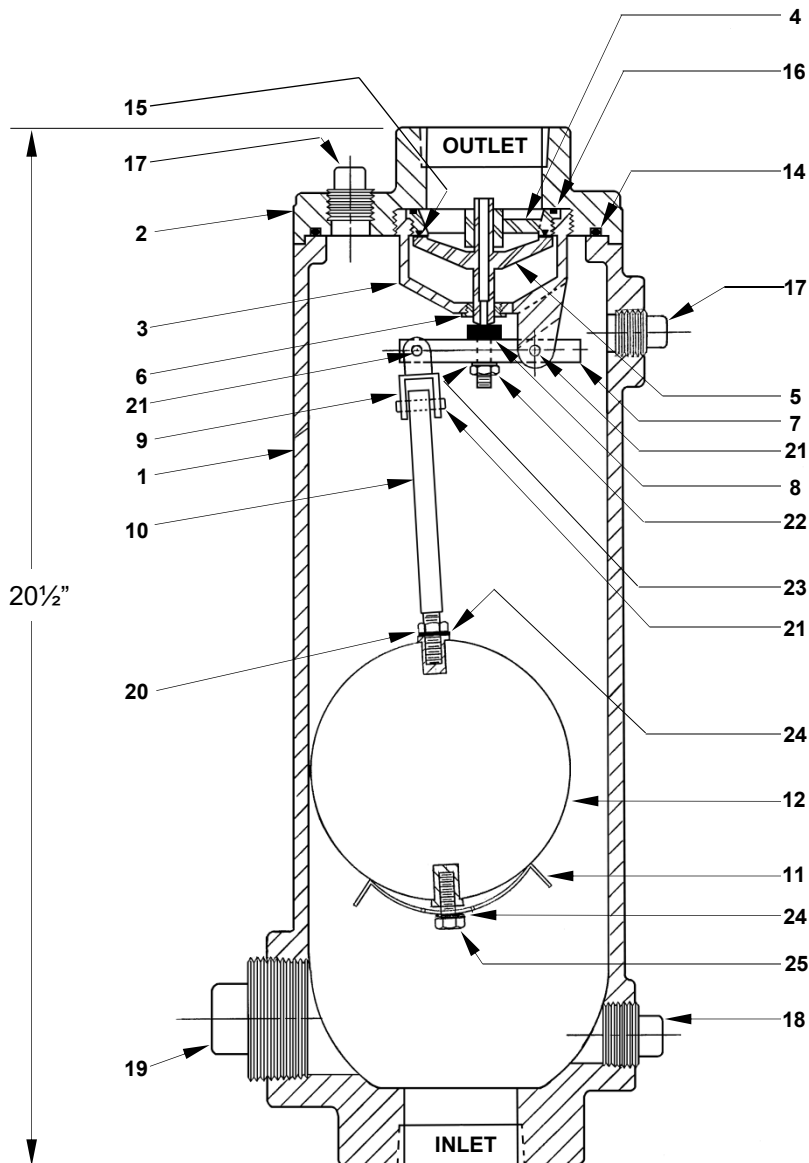
SIZE	INLET	OUTLET	ORIFICE DIAMETER	WORKING PRESSURE
2" X 1"	2" NPT	1" NPT	1/8"	10-150 PSI
2" X 2"	2" NPT	2" NPT		
3" X 2"	3" NPT	2" NPT		

WEIGHT – 60 LBS

PARTS LIST

ITEM	DESCRIPTION	MATERIAL
1.	BODY	CAST IRON, ASTM A126-B*
2.	COVER	CAST IRON, ASTM A126-B*
3.	CAGE	316 STAINLESS STEEL
4.	SEAT	316 STAINLESS STEEL
5.	PLUG	316 STAINLESS STEEL
6.	BUSHING	316 STAINLESS STEEL
7.	LEVER ARM	316 STAINLESS STEEL
8.	ORIFICE BUTTON	BUNA-N/ STAINLESS STEEL
9.	UNIVERSAL COUPLING	316 STAINLESS STEEL
10.	FLOAT ROD	316 STAINLESS STEEL
11.	FLOAT HOOD	316 STAINLESS STEEL
12.	FLOAT BALL	316 STAINLESS STEEL
13.	COVER BOLT (4)	A307 ZINC PLATED STEEL (OPTIONAL 316 SS)
14.	COVER O-RING	BUNA-N RUBBER
15.	RENEWABLE SEAT	BUNA-N RUBBER
16.	CAGE O-RING	BUNA-N RUBBER
17.	PIPE PLUG, 1/2"	STEEL
18.	PIPE PLUG, 1"	MALLEABLE IRON
19.	PIPE PLUG, 2"	MALLEABLE IRON
20.	HEX NUT	304 STAINLESS STEEL
21.	SPRING PIN	316 STAINLESS STEEL
22.	HEX NUT	304 STAINLESS STEEL
23.	LOCK WASHER	410 STAINLESS STEEL
24.	LOCK WASHER	410 STAINLESS STEEL
25.	FLOAT SCREW	304 STAINLESS STEEL

* LINED AND COATED WITH NSF-61 CERTIFIED EPOXY



NOTE: VALVE SHOWN IN CLOSED POSITION

GA INDUSTRIES a +GF+ Brand

DATE:	3-7-09	DRAWN BY:	WJN
-------	--------	-----------	-----

SINGLE BODY SEWAGE COMBINATION AIR VALVE

FIGURE 942	DRAWING NO. ECAV7104-W	REV B
-------------------	----------------------------------	-----------------