

Figure 525-RD

Weight Loaded Relief Valves

for Water, Sewage and Sludge

Description

GA Industries Figure 525-RD direct acting, weight loaded relief valves protect systems from excessively high pressure due to a sudden stoppage of pumping or valve closure.

The valves are closed as long as the pressure at its inlet is below a pre-set maximum. When inlet pressure rises to the valve's setting it smoothly opens to discharge fluid at the rate necessary to limit a further rise in pressure. The valve closes slowly and seals tightly when pressure returns to normal.

The valve's straight through design affords no restrictions to flow and is ideal for use with sewage and sludge.

The Figure 525-RD is especially well suited to protect progressive cavity pumps from excess pressure should their discharge become blocked.

Product Features

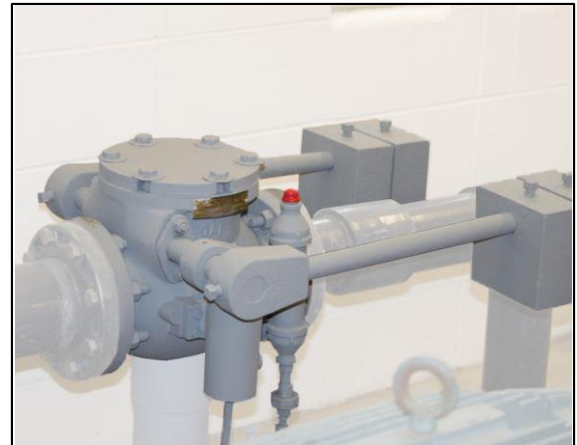
- Heavy duty, flow efficient globe body
- Tough 316 stainless steel replaceable body seat
- Durable resilient disc seat for tight shutoff
- Dual adjustable counterweights
- Self-contained hydraulic closing speed control

Standard Materials

- Body Cast Iron, ASTM A126 Class B
- Cover Steel, ASTM A36
- Body Seat Type 316 Stainless Steel
- Disc, Disc Arm Ductile Iron, ASTM A536 Gr 65-45-12
- Disc Seat Buna-N Rubber
- Shaft Stainless Steel
- External Fasteners Steel, A307, Zinc Plated

Corrosion Protection

- Standard: Internal and External Carboline 891 NSF-61 Certified Epoxy, min 6 mil DFT
- Option P2 316 Stainless Steel External Fasteners



Options

- Option 1D With Honeywell HDLS NEMA 1, 3, 4, 4X, 6, 6P, 12 & 13 DPDT Limit Switch

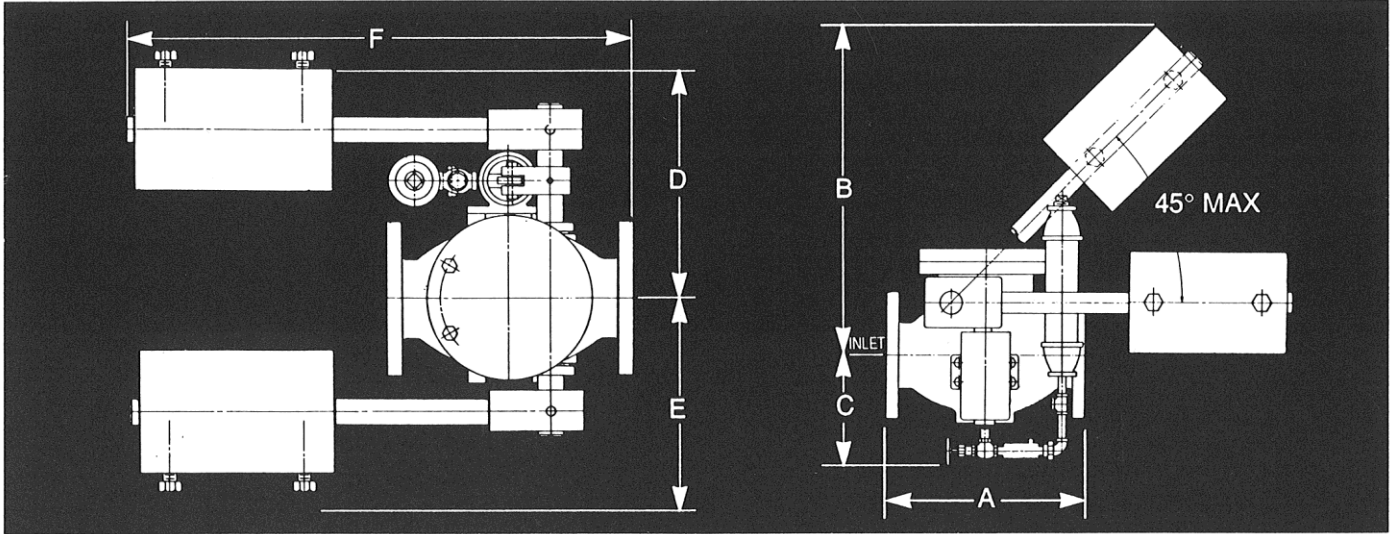
Ordering Data

- Figure Number (525-RD)
- Size
- Options and/or Accessories
- Relief Pressure Setting

Maximum Relief Set Pressure, PSI							
Size	2" – 2½"	3"	4"	6"	8"	10"	12"
Maximum	125	100	70	30	15	10	7

Relief valve typically set at 10% above highest normal pressure at valve inlet

Data Sheet 525.01B



SIZE	2"	2½"	3"	4"	6"	8"	10"	12"
A	9	12	12	13	17½	18	23	28
B	25	26	29	33	37	44	49	56
C	5½	5½	5½	7	7	9	9	11
D	12	12	13	14	16	18	19	21
E	9	9	10	11	13	15	16	18
F	32	33	35	40	45	50	55	60
WGT	205	250	270	375	405	500	685	1170

