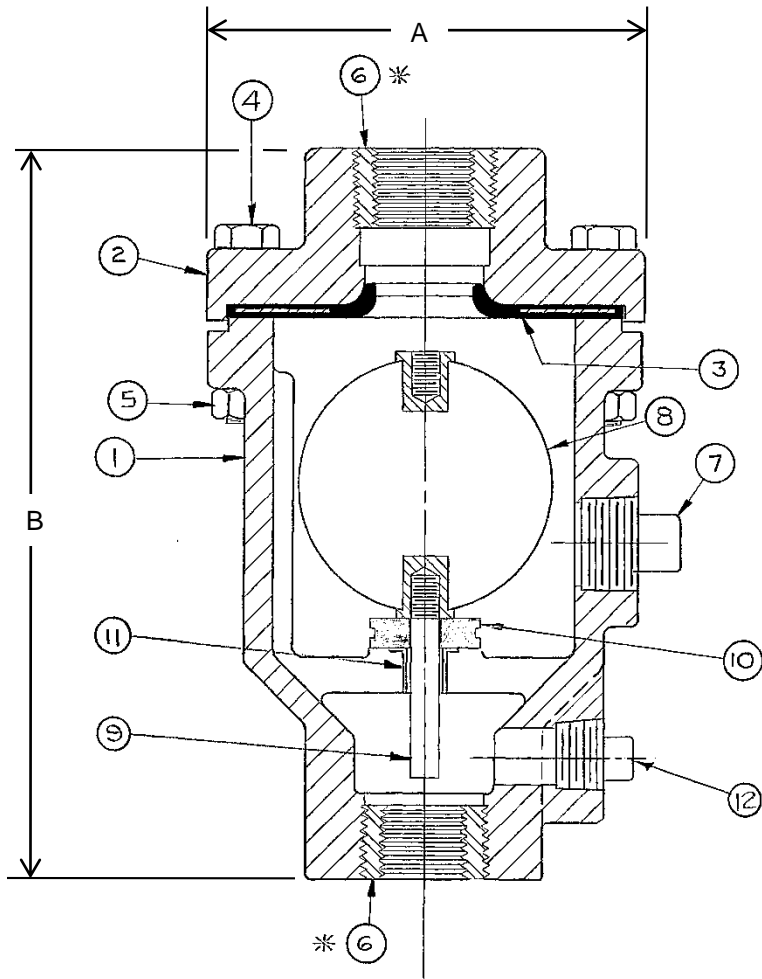


VALVE SIZE	1/2"	3/4"	1"	2"	3"
A	6 1/8"	6 1/8"	6 1/8"	8 5/16"	12 1/4"
B	4 1/2"	4 1/2"	4 1/2"	5 5/16"	8"
C	9 3/4"	9 3/4"	9 3/4"	11 1/8"	11 5/8"
D	3 7/8"	3 7/8"	3 7/8"	3 7/8"	4 3/8"

F:\EMPIRE\EMPIRE-S\EAV-7095.PRT

<b>GA INDUSTRIES, INC.</b> 1/2"-3" AIR/VACUUM VALVE FOR DEEP WELL SERVICE	STANDARD TOLERANCES (UNLESS OTHERWISE NOTED)	REFERENCES EAV-7007	SCALE NTS	DRAWN BY HGM		
	FINISHED SURFACES ONLY DIMENSIONS SHOWN IN INCHES	SERIAL NO.	EFFECTIVE DATE: 5-5-2006	APPR. BY JJF		
	.x = .02 .xx = .01 .xxx = .002 FRACTIONS: 1/64" ANGLES: 1° FINISH: $\sqrt{\text{xx}}$ RMS	FIG. NO. 930-DWS	FILE	DRAWING NO. EAV-7095	REV	



### PARTS LIST

ITEM	DESCRIPTION	MATERIAL
1.	BODY	CAST IRON, ASTM A126-B
2.	COVER	CAST IRON, ASTM A126-B
3.	SEAT	BUNA-N & 304 STAINLESS STEEL
4.	COVER BOLTS	ZINC PLATED STEEL (Standard)
		316 STAINLESS STEEL (Optional)
5.	COVER NUTS	ZINC PLATED STEEL (Standard)
		316 STAINLESS STEEL (Optional)
6.	REDUCING BUSHING *	STEEL
7.	PIPE PLUG	STEEL
8.	FLOAT BALL	316 STAINLESS STEEL
9.	FLOAT GUIDE	ULTRA HIGH MOLECULAR WEIGHT POLYETHYLENE
10.	CUSHION	EPDM RUBBER
11.	GUIDE BEARING	LOW FRICTION POLYMER
12.	PIPE PLUG	STEEL

\* Part #6 reducing bushing used in 1/2" and 3/4" sizes only

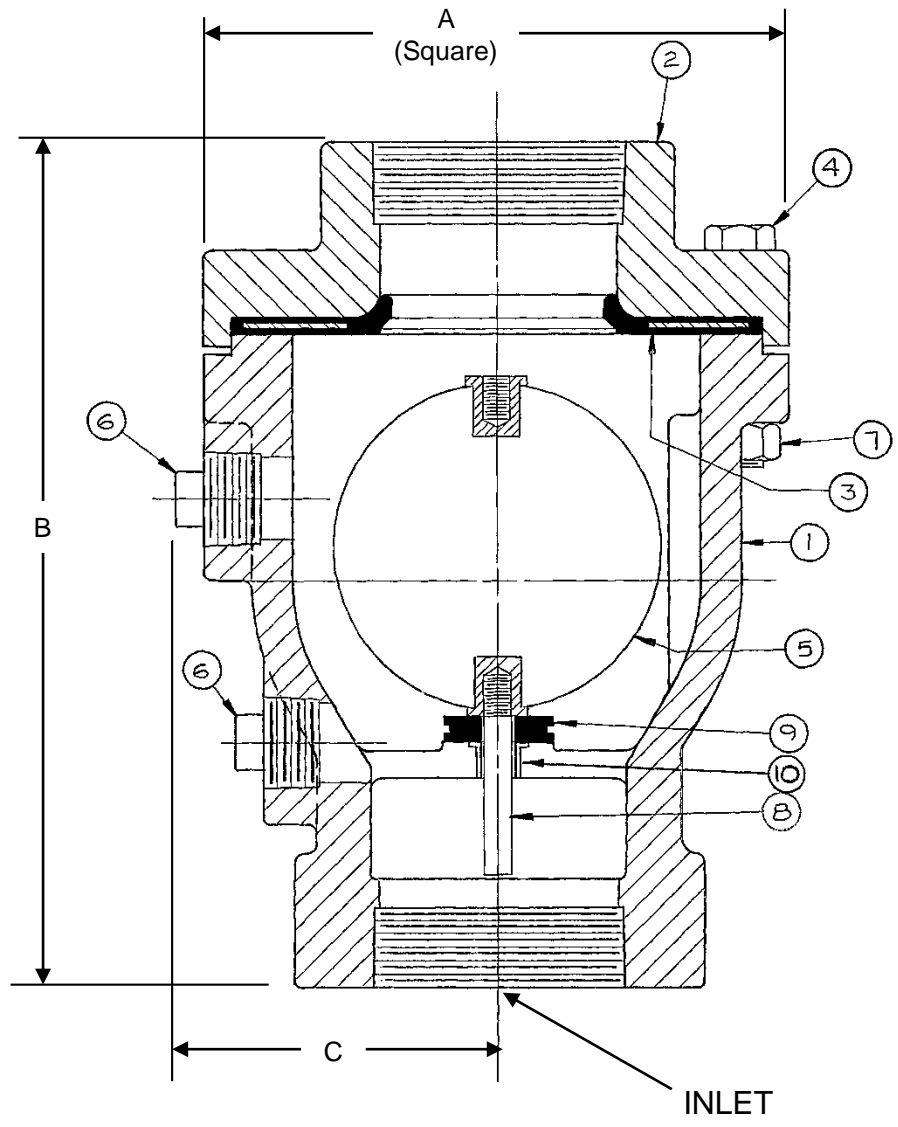
FIGURE NUMBER	MAXIMUM WORKING PRESSURE	HYDRO TEST PRESSURE
<b>930-T</b>	300 PSI (2,068 KPa)	450 PSI (3,103 KPa)

FIGURE 930 AIR & VACUUM VALVES ARE MANUFACTURED AND TESTED IN ACCORDANCE WITH AWWA C512

SIZE	INLET	OUTLET	A	B	WGT
1/2" (DN15)	1/2" NPT	1/2" NPT	3.88" (98mm)	7.13" (181mm)	10 lbs (4.5 kg)
3/4" (DN20)	3/4" NPT	3/4" NPT	3.88" (98mm)	7.13" (181mm)	10 lbs (4.5 kg)
1" (DN25)	1" NPT	1" NPT	3.88" (98mm)	7.13" (181mm)	10 lbs (4.5 kg)

**GA INDUSTRIES**, a VAG Brand

DATE:	8-23-08	DRAWN BY:	WJN
<b>1/2", 3/4" &amp; 1" KINETIC AIR &amp; VACUUM VALVE</b>			
<b>FIGURE 930-T</b>			DRAWING NO. <b>EAV-7051-W</b>
			REV <b>B</b>



**PARTS LIST**

ITEM	DESCRIPTION	MATERIAL
1.	BODY	CAST IRON, ASTM A126-B
2.	COVER	CAST IRON, ASTM A126-B
3.	SEAT	BUNA-N & 304 STAINLESS STEEL
4.	COVER BOLTS	ZINC PLATED STEEL (Standard)
		316 STAINLESS STEEL (Optional)
5.	FLOAT BALL	316 STAINLESS STEEL
6.	PIPE PLUG	STEEL
7.	COVER NUTS	ZINC PLATED STEEL (Standard)
		316 STAINLESS STEEL (Optional)
8.	FLOAT GUIDE	ULTRA HIGH MOLECULAR WEIGHT POLYETHYLENE
9.	CUSHION	EPDM RUBBER
10.	GUIDE BEARING	LOW FRICTION POLYMER

FIGURE NUMBER	MAXIMUM WORKING PRESSURE	HYDRO TEST PRESSURE
<b>930-T</b>	300 PSI (2,068 KPa)	450 PSI (3,103 KPa)

FIGURE 930 AIR & VACUUM VALVES ARE MANUFACTURED AND TESTED IN ACCORDANCE WITH AWWA C512

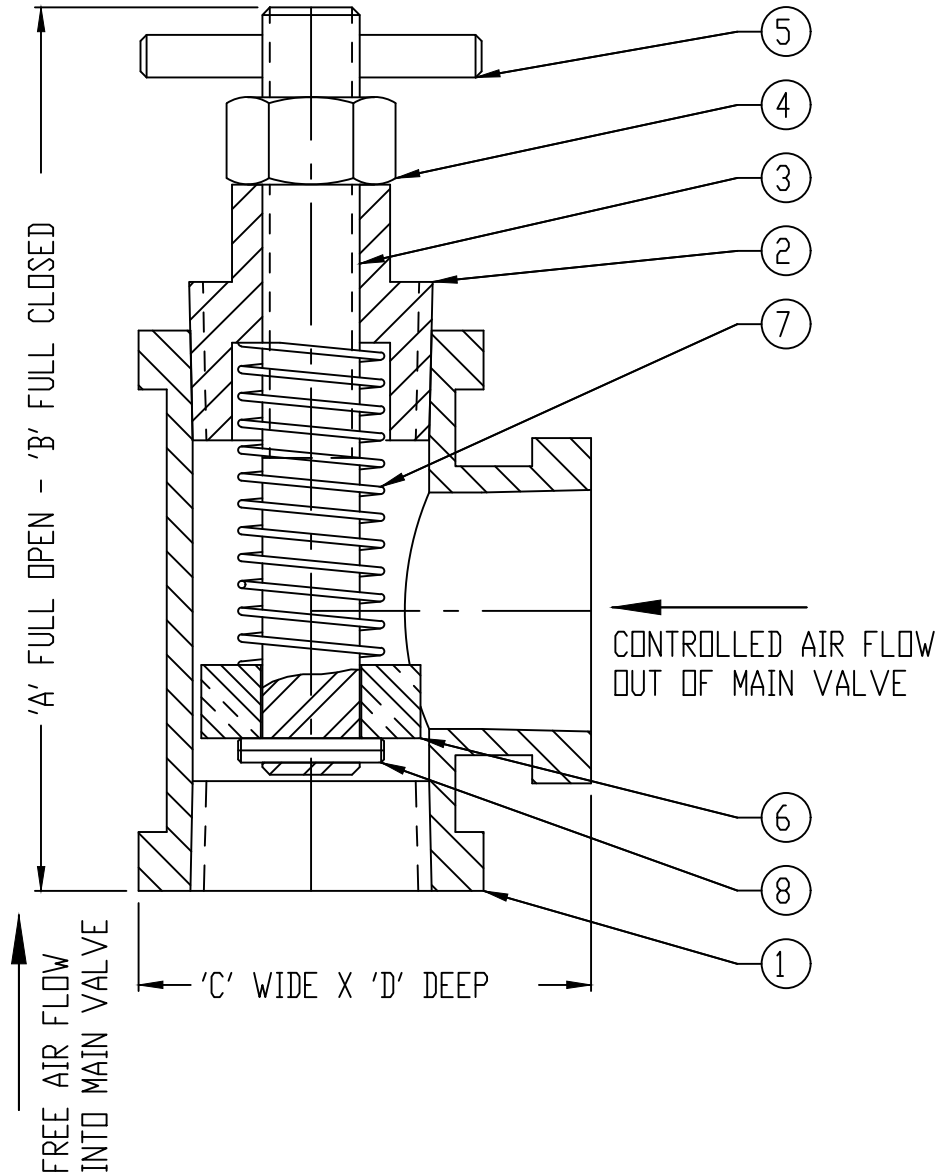
SIZE	INLET	OUTLET	A	B	C	WGT
2" (DN50)	2" NPT	2" NPT	5.38" (137mm)	8.38" (213mm)	3.62" (92mm)	20 lbs (9,1 kg)
3" (DN80)	3" NPT	3" NPT	6.63" (168mm)	10.63" (270mm)	4.13" (105mm)	30 lbs (13,4 kg)

**GA INDUSTRIES, a VAG Brand**

DATE:	8-23-08	DRAWN BY:	WJN
<b>2" &amp; 3" KINETIC AIR &amp; VACUUM VALVE</b>			
<b>FIGURE 930-T</b>			DRAWING NO. <b>EAV-7052-W</b>
			REV <b>B</b>

PART NO.	PART NAME	MATERIAL
1	BODY	MALLEABLE IRON
2	CAP	MALLEABLE IRON
3	STEM	SST 18-8
4	NUT	STEEL GRADE 2
5	SPRING HANDLE	SST 18-8
6	DISC	UHMW
7	SPRING	SST 18-8
8	DISC RETAINER	SST 18-8

SIZE	1" NPT	2" NPT	3" NPT	4" NPT
A	6 1/8	8 5/16	12 1/4	14 3/4
B	4 1/2	5 5/16	8"	9 1/2
C	2 7/16	3 3/4	5 5/16	6 1/2
D	1 13/16	3"	4 5/16	5 7/16



F:\EMPIRE\EMPIRE-S\EAV-7072.EMP

GA INDUSTRIES, INC. 1"-4" THROTTLING DEVICE DOUBLE ACTING DESIGN	STANDARD TOLERANCES (UNLESS OTHERWISE NOTED)	REFERENCES EAV-7003	SCALE NTS	DRAWN BY HGM	
	FINISHED SURFACES ONLY DIMENSIONS SHOWN IN INCHES .x = .02 .xx = .01 .xxx = .002 FRACTIONS 1/64" ANGLES 1° FINISH $\sqrt{x}$ XX RMS	SERIAL NO.	EFFECTIVE DATE: 10-30-98	APPR. BY JJF	
		FIG. NO. 933	FILE EAV	DRAWING NO. EAV-7072	REV