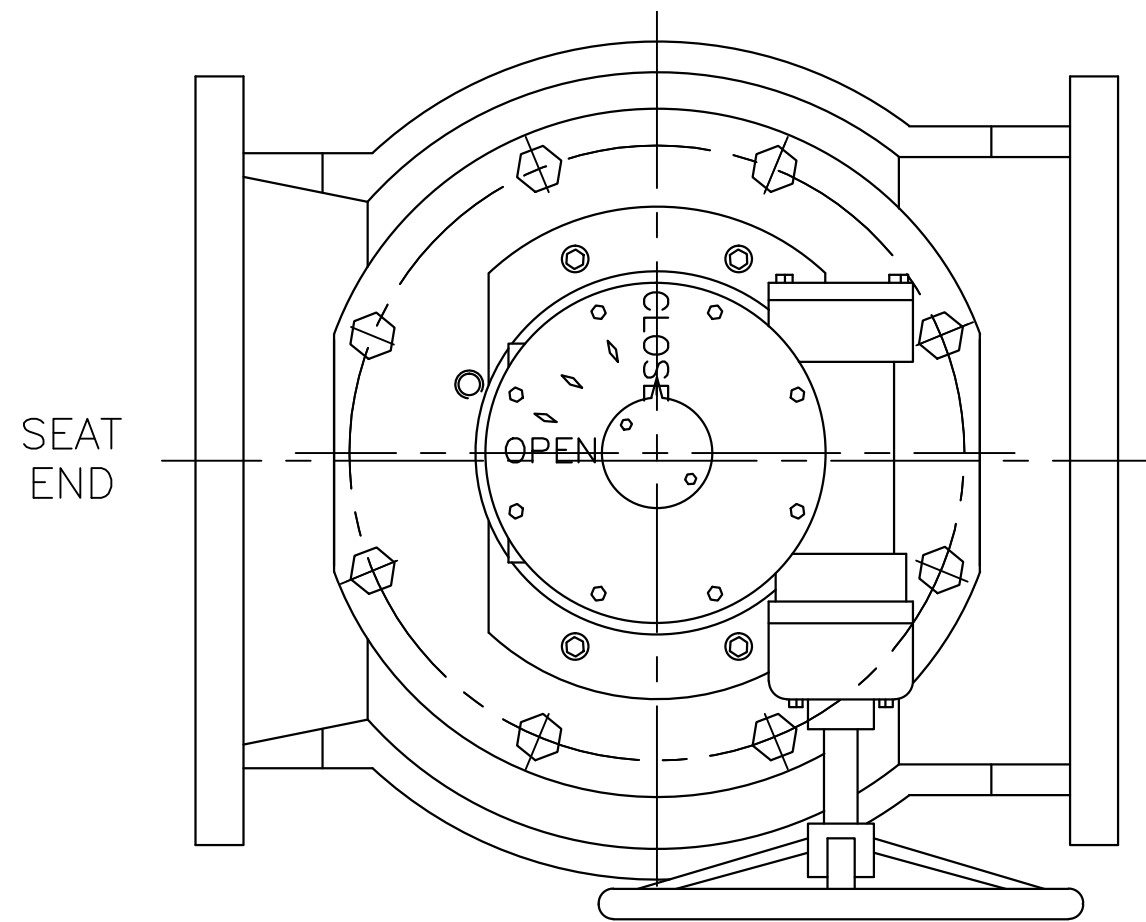


VALVE DIMENSIONS

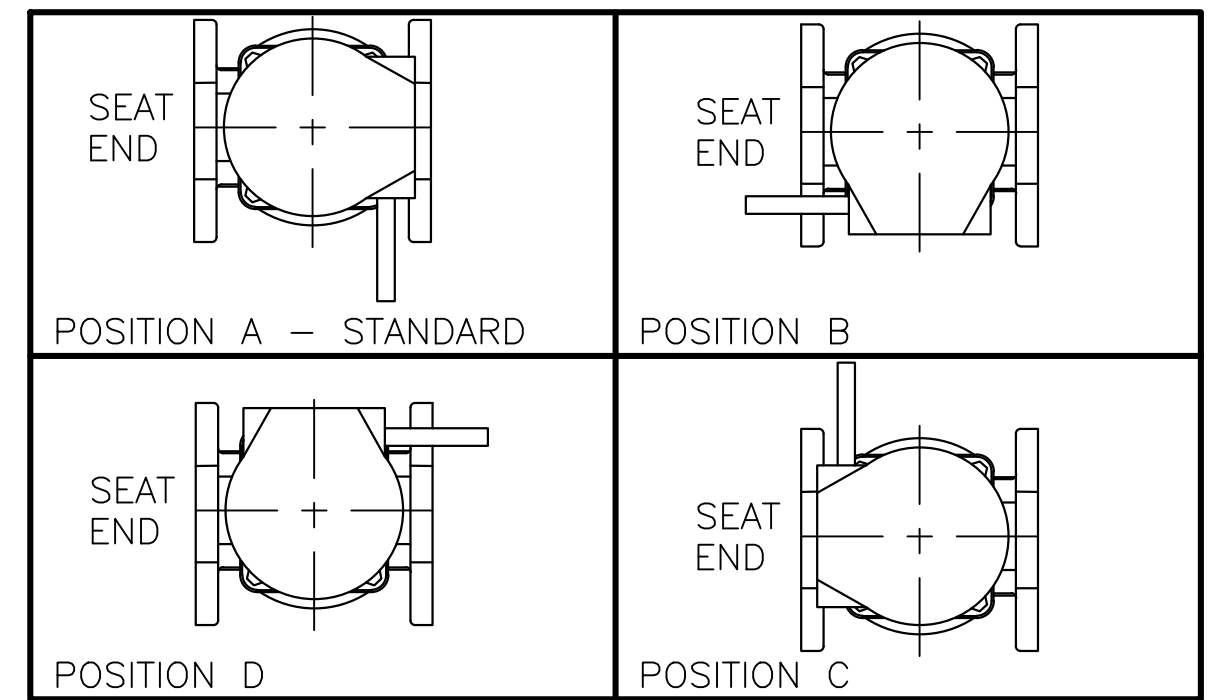
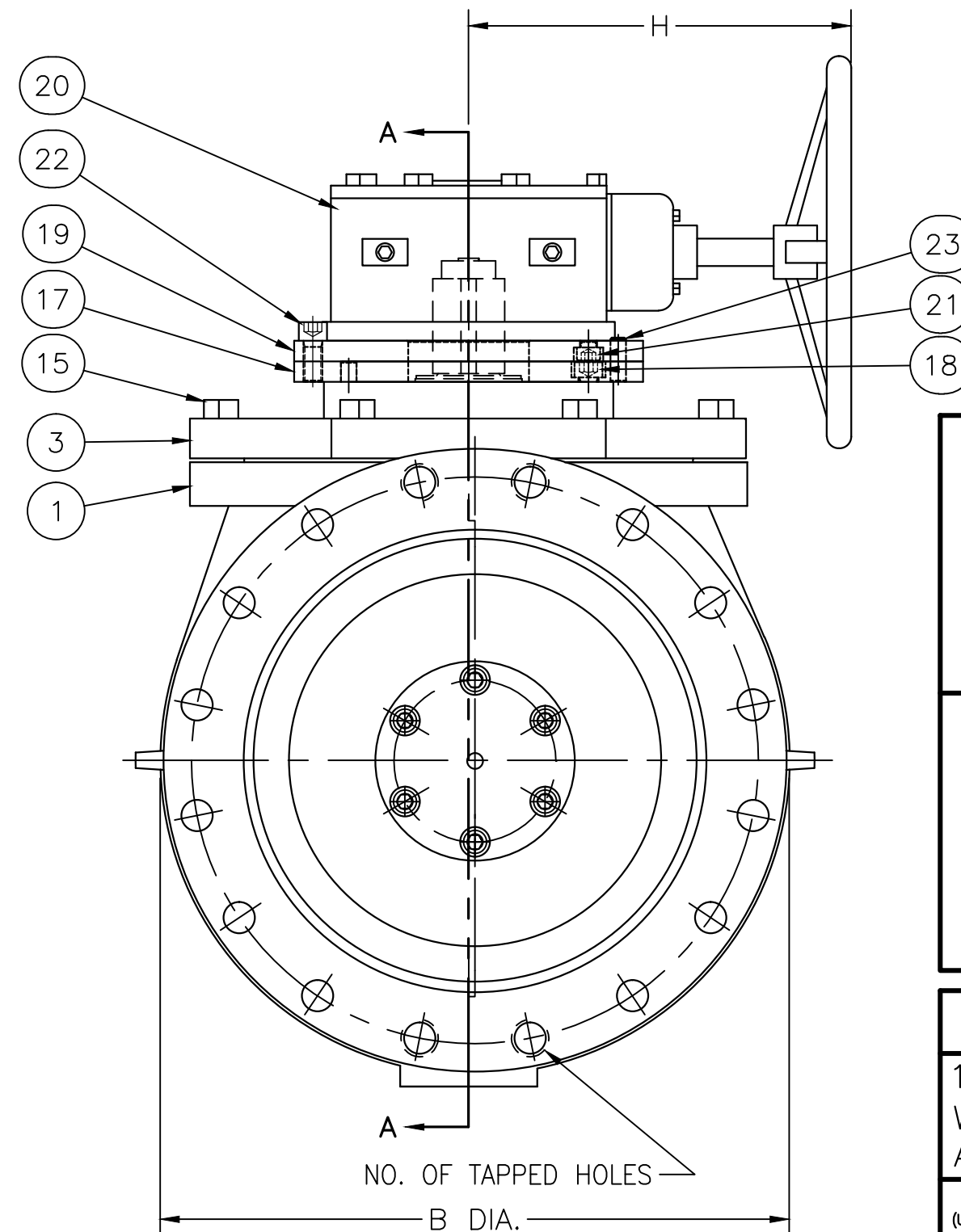
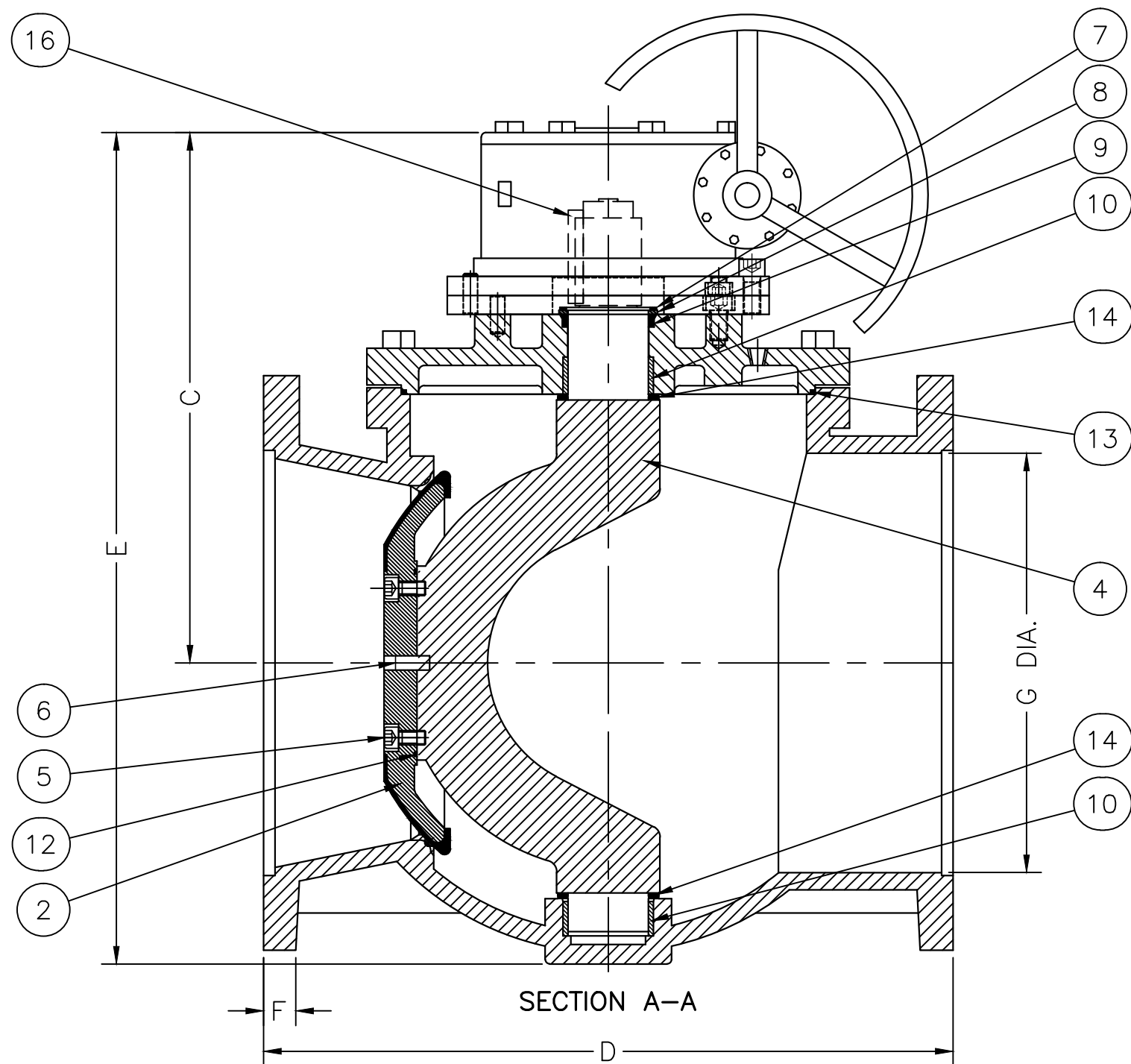
PARTS LIST

SIZE	B DIA.		C		D		E		F		G DIA.		H		NO. OF TAPPED HOLES	WEIGHT IN LBS.
	IN.	MM	IN.	MM	IN.	MM	IN.	MM	IN.	MM	IN.	MM	IN.	MM		
14"	21.02	534	21.45	545	17.00	432	30.83	783	1.38	35	13.98	355	15.35	390	4	817
16"	23.50	597	22.05	560	17.75	451	34.80	884	1.44	37	16.14	410	15.35	390	4	1008
18"	25.00	635	22.04	560	30.00	762	34.80	884	1.57	40	17.99	457	15.35	390	0	1313
20"	27.52	699	22.91	582	36.00	914	39.64	1007	1.69	43	20.08	510	17.72	450	4	2061
24"	32.01	813	22.91	582	42.00	1067	40.94	1040	1.90	48	24.21	615	18.90	480	0	2258

ITEM NO.	DESCRIPTION
1	BODY
2	PLUG
3	COVER
4	SHAFT
5	PLUG SCREWS
6	PLUG PIN
7	RETAINING RING
8	THRUST RACE
9	U-CUP SEAL
10	BEARING
12	PLUG O-RING
13	COVER O-RING
14	GRIT EXCLUDER/THRUST BEARING
15	COVER BOLTS
16	KEY
17	LOWER PLATE
18	LOWER PLATE BOLTS
19	UPPER PLATE
20	WORM GEAR ACTUATOR
21	ACTUATOR BOLTS
22	PLATE-JOINING BOLTS
23	UPPER/LOWER PLATE & COVER PINS



- NOTES:
 1. FLANGE DRILLING PER ANSI B16.1 CLASS 125
 2. IN COMPLIANCE WITH AWWA C517
 3. COLD WORKING PRESSURE: 150 PSI
 4. HYDROSTATIC TEST PRESSURE: 225 PSI
 5. ACTUATOR SUPPLIED IN POSITION "A" UNLESS SPECIFIED OTHERWISE



GA INDUSTRIES, LLC

14"-24" ECO-CENTRIC PLUG VALVE
 WORM GEAR ACTUATOR W/HANDWHEEL
 ANSI 125 LB FLANGES

STANDARD TOLERANCES (UNLESS OTHERWISE NOTED) FINISHED SURFACES ONLY DIMENSIONS SHOWN IN INCHES .x = ±.02 .xx = ±.01 .xxx = ±.002 FRACTIONS ±1/64" ANGLES ±1° FINISH ♀- XX RMS	SERIAL NO. *	SCALE N.T.S.	DRAWN BY HGM
	REFERENCES *	EFFECTIVE DATE 07-17-2009 TO	APPR. BY JT
	FIG. NUMBER 517	FILE PL	DRAWING NO. PL-1005
			REV. E

REV.	DESCRIPTION	DATE	BY
E	"STEM" NOW REFERRED TO AS "SHAFT" IN PARTS LIST	5/31/2012	SWR
D	REVISED AS NECESS. TO REPRESENT VALVE "AS ASSEMBLED"	3/14/2012	SWR
C	ELIMINATED ITEM NO. 11 - PACKING	7/21/2011	SWR
B	UPDATED DWG. AS NECESSARY	7/14/2011	SWR
A	ADDED WEIGHTS, CHANGED NOTE & SWITCHED ITEMS 2 & 4	03-24-2010	RJT

J:\AUTOCAD\PLUG\SHOW\PL-1005-E.DWG