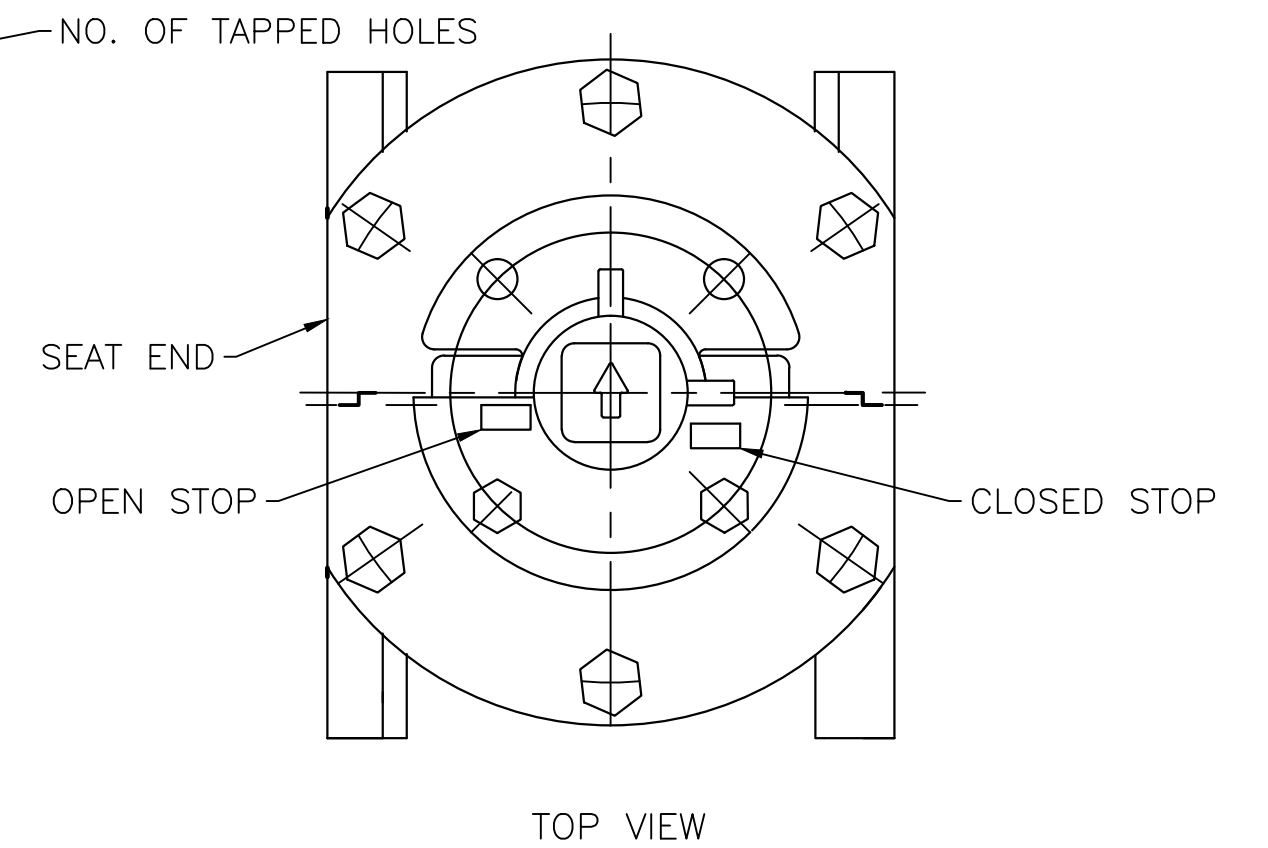
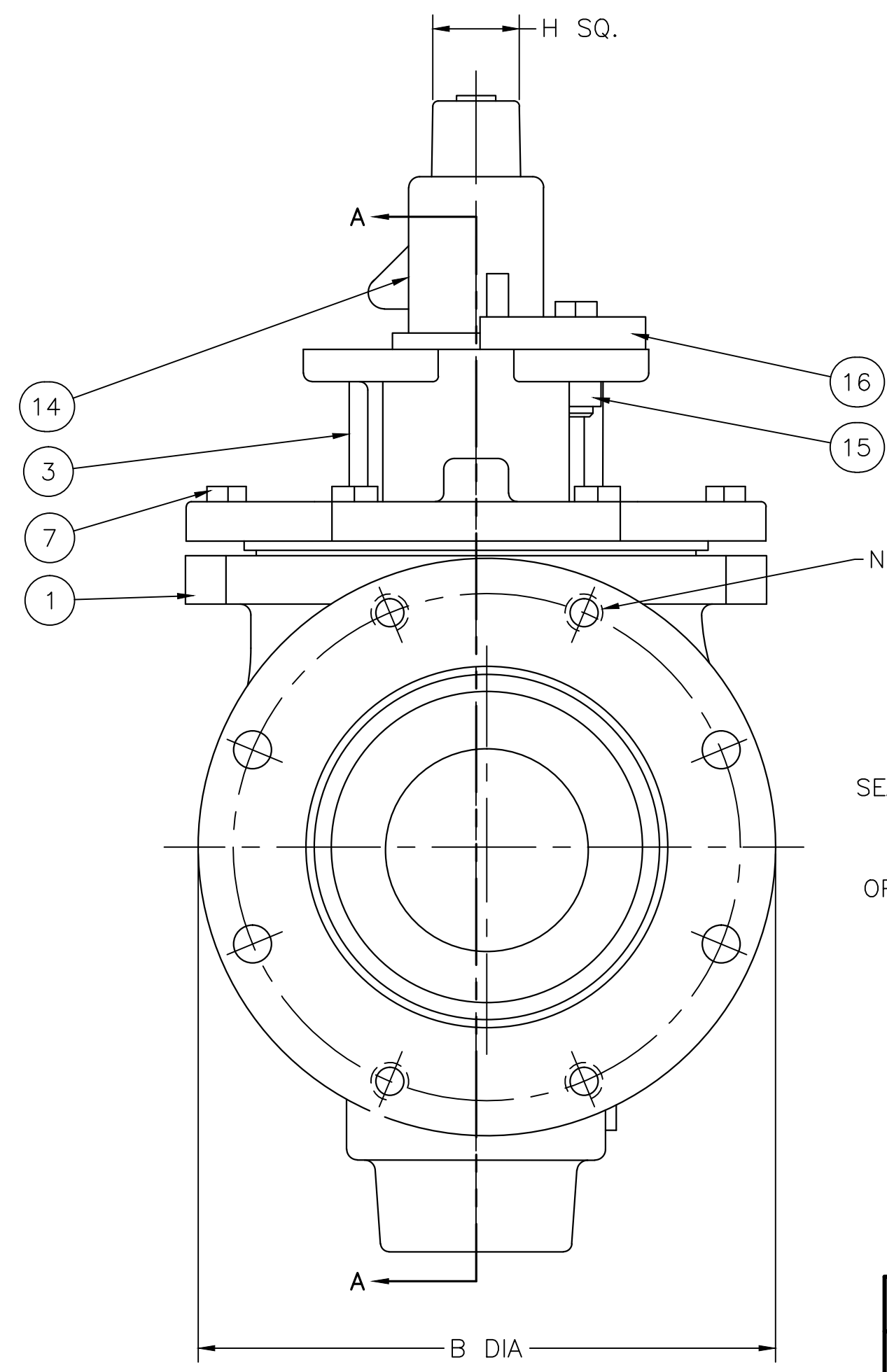
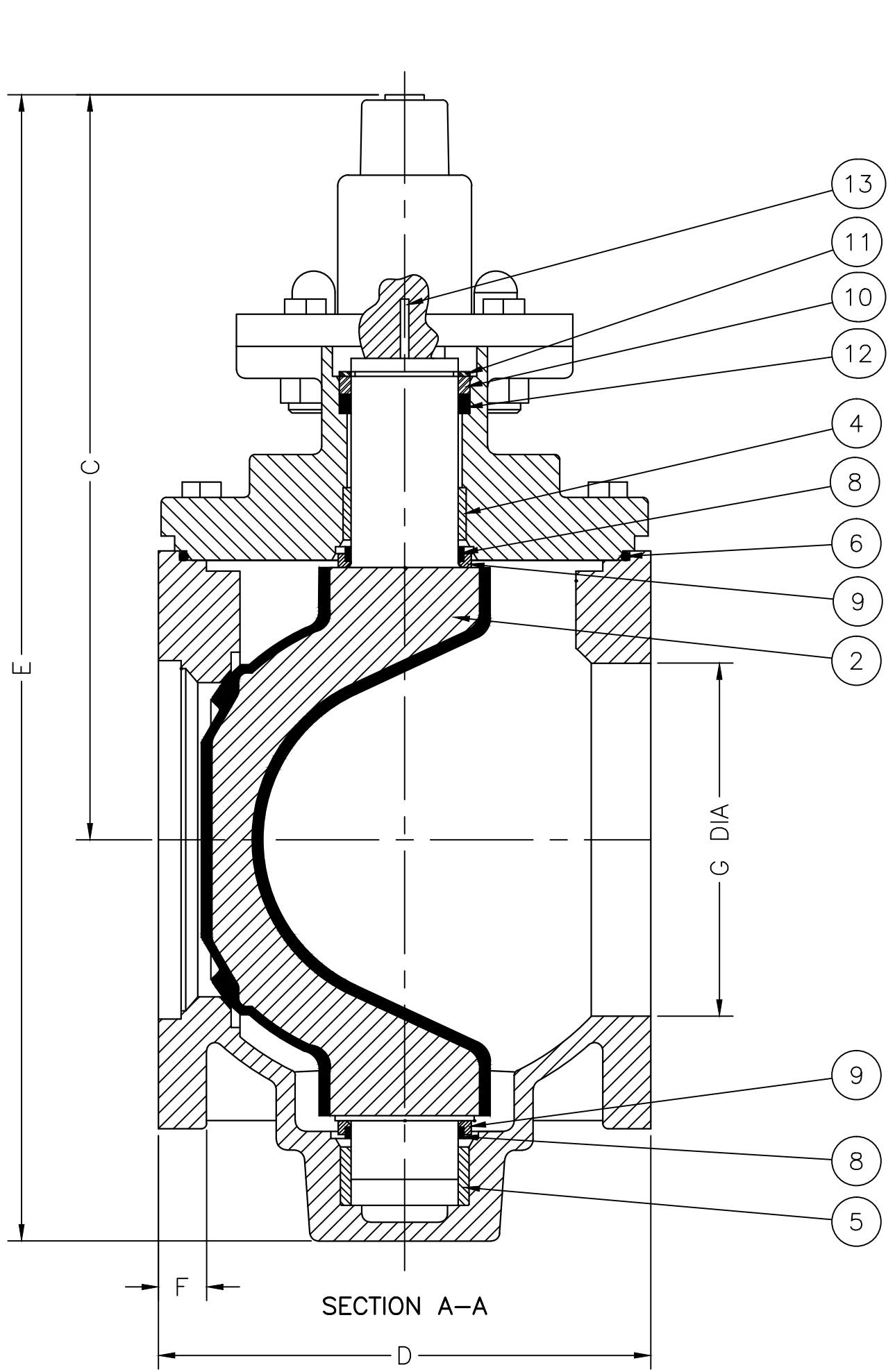


VALVE DIMENSIONS																
SIZE	B		C		D		E		F		G		H SQ.		NO. OF TAPPED HOLES/FLG.	WEIGHT IN LBS.
	IN.	MM	IN.	MM	IN.	MM	IN.	MM	IN.	MM	IN.	MM	IN.	MM		
3"	7.52	191	11.89	302	8.00	203	16.46	418	0.75	19	3.19	81	2	50.8	0	52
4"	9.02	229	12.87	327	9.00	229	18.80	478	0.94	24	4.25	108	2	50.8	2	87
6"	10.98	279	14.25	362	10.50	267	21.02	534	0.98	25	6.26	159	2	50.8	2	127
8"	13.50	343	17.32	440	11.50	292	26.69	678	1.12	28	8.27	210	2	50.8	4	234

- NOTES:
1. FLANGE DRILLING PER ANSI B16.1 CLASS 125
2. IN COMPLIANCE WITH AWWA C517
3. COLD WORKING PRESSURE: 175 PSI
4. HYDROSTATIC TEST PRESSURE: 265 PSI

PARTS LIST	
ITEM NO.	DESCRIPTION
1	BODY
2	PLUG
3	COVER
4	COVER BEARING
5	BODY BEARING
6	COVER O-RING
7	COVER BOLTS
8	GRIT EXCLUDER SEAL
9	THRUST BEARING
10	BUSHING
11	RETAINING RING
12	U-CUP SEAL
13	KEY
14	SQUARE NUT
15	SQUARE NUT BOLTS
16	ADJUSTABLE TORQUE COLLAR



GA INDUSTRIES, LLC

3"-8" ECO-CENTRIC PLUG VALVE
W/DIRECT OPERATING NUT
ANSI 125 LB FLANGES

STANDARD TOLERANCES (UNLESS OTHERWISE NOTED) FINISHED SURFACES ONLY DIMENSIONS SHOWN IN INCHES x = ±.02 .xxx = ±.01 .xxxx = ±.002 FRACTIONS ±1/64" ANGLES ±1° FINISH ϕ -XX RMS	SERIAL NO. *	SCALE N.T.S.	DRAWN BY HGM APPR. BY JT	
	REFERENCES *	EFFECTIVE DATE 07-17-2009 TO	FIG. NUMBER 517	DRAWING NO. PL-1001

REV.	DESCRIPTION	DATE	BY
A	CORRECTED NO. OF TAP HOLES ON CHART	04-29-2011	RJT

J:\AUTOCAD\PLUG\PL-SHOW\PL-1001-A.DWG