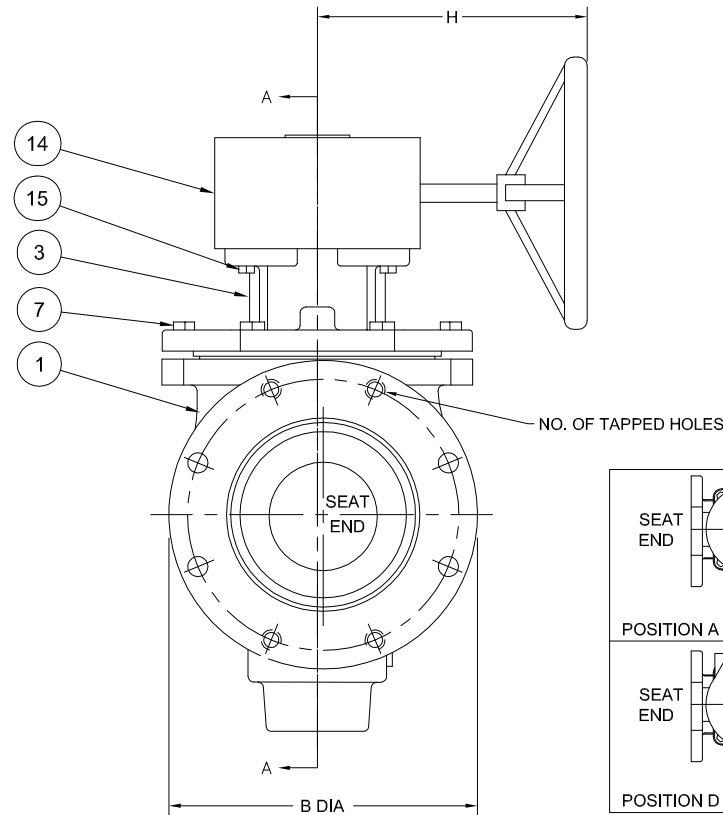
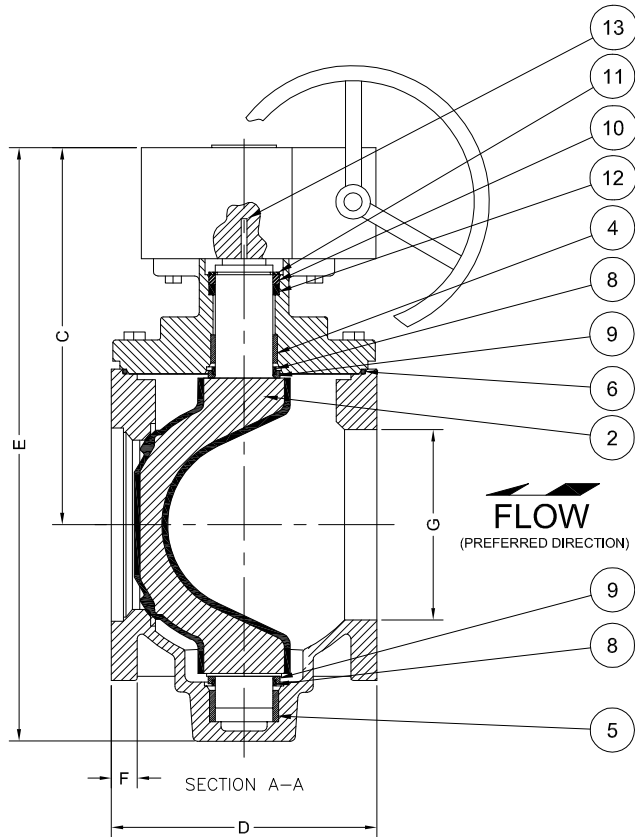


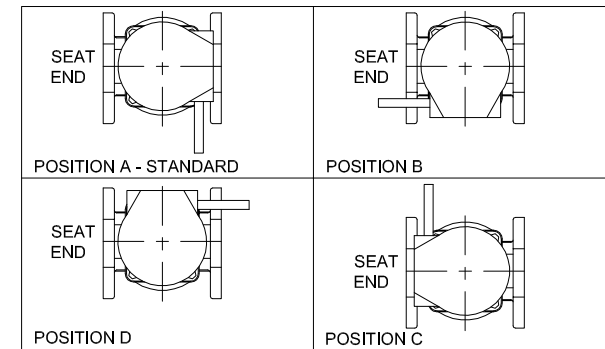
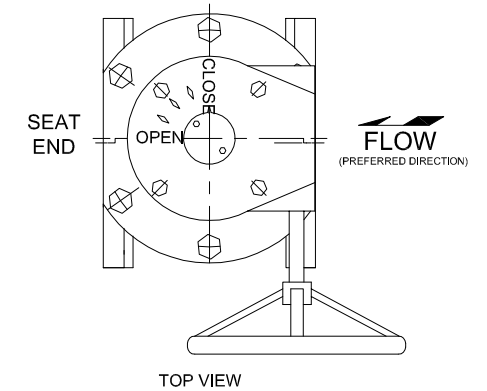
SIZE	VALVE DIMENSIONS														NO. OF TAPPED HOLES	WEIGHT IN LBS.
	B		C		D		E		F		G		H			
	IN.	MM	IN.	MM	IN.	MM	IN.	MM	IN.	MM	IN.	MM	IN.	MM		
6"	10.98	279	12.36	314	10.50	267	19.13	486	0.98	25	6.26	159	9.45	240	2	150
8"	13.50	342	16.50	419	11.50	292	25.87	657	1.12	28	8.27	210	11.02	280	4	297
10"	15.98	406	17.76	451	13.00	330	28.26	717	1.18	30	10.23	260	11.02	280	4	386
12"	19.01	483	19.25	489	14.00	356	30.31	770	1.26	32	12.20	310	11.02	280	6	487

NOTES:

1. FLANGE DRILLING PER ANSI B16.1 CLASS 125
2. IN COMPLIANCE WITH AWWA C517
3. COLD WORKING PRESSURE: 175 PSI
4. HYDROSTATIC TEST PRESSURE: 265 PSI
5. ACTUATOR SUPPLIED IN POSITION A UNLESS SPECIFIED OTHERWISE
6. VALVE DESIGNED FOR BI-DIRECTIONAL FLOW (PREFERRED FLOW DIRECTION SHOWN BELOW)



PARTS LIST	
ITEM NO.	DESCRIPTION
1	BODY
2	PLUG
3	COVER
4	COVER BEARING
5	BODY BEARING
6	COVER O-RING
7	COVER BOLTS
8	GRIT EXCLUDER SEAL
9	THRUST BEARING
10	BUSHING
11	RETAINING RING
12	U-CUP SEAL
13	KEY
14	GEAR ACTUATOR
15	GEAR ACTUATOR BOLTS



GA INDUSTRIES, LLC

**6"-12" ECO-CENTRIC PLUG VALVE
WORM GEAR ACTUATOR W/HANDWHEEL
ANSI 125 LB FLANGES**

STANDARD TOLERANCES (UNLESS OTHERWISE NOTED) FINISHED SURFACES ONLY DIMENSIONS SHOWN IN DIMENSIONS X = ±.01 XX = ±.001 XXX = ±.002 FRACTIONS 1/16" ANGLES 1° FRESH - ✓/RHS	SERIAL NO. *	SCALE N.T.S.	DRAWN BY HGM APPR. BY JT	
	REFERENCES *	EFFECTIVE DATE 07-17-2009	TO	
	FIG. NUMBER 517	FILE PL	DRAWING NO. PL-1004	REV. C

C	12" - 6 TAPPED HOLES (WAS 4)	10-12-2015	BRF
A	ADDED WEIGHTS & CHANGED NOTE	03-24-2010	RJT
REV.	DESCRIPTION	DATE	BY

C:\PROJECTS\ENGINEERING\AUTOCAD\PLUG-VALVE\PL-1004-C.DWG