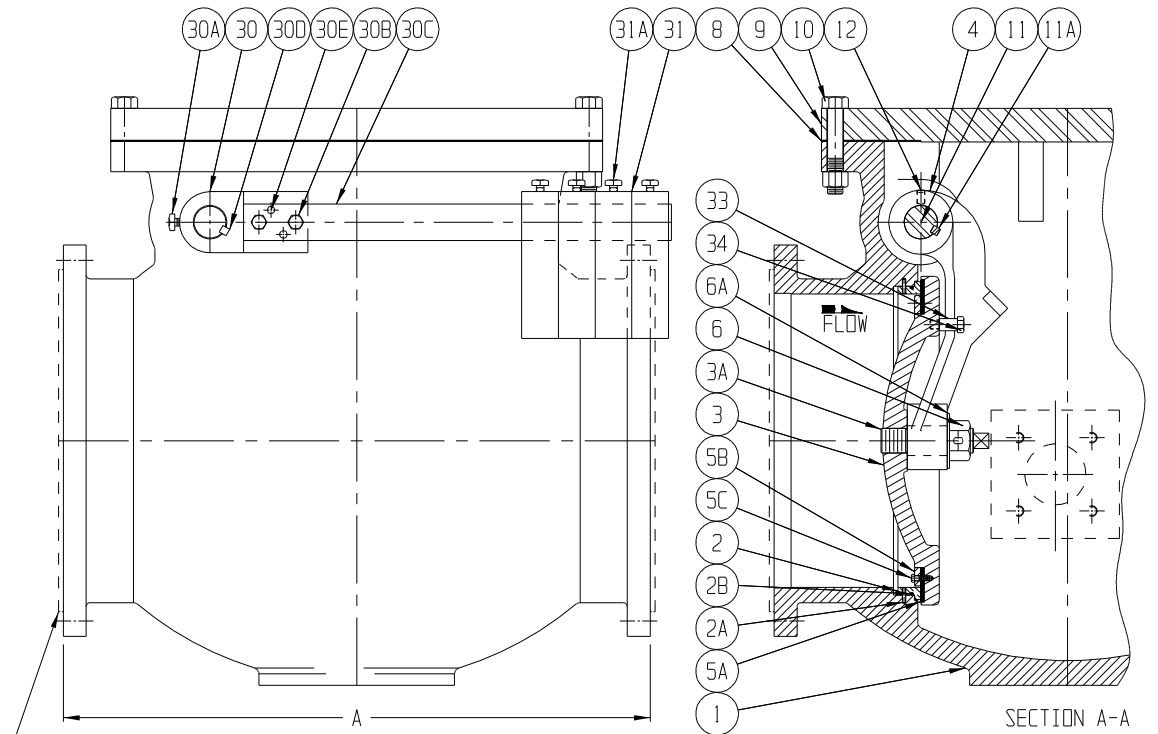


NO	DESCRIPTION	NO	DESCRIPTION	NO	DESCRIPTION	NO	DESCRIPTION
1	BODY	6	DISC NUT	14	OUTER SHAFT BUSHING	30E	COUNTERWEIGHT ARM PINS
2	SEAT RING	6A	DISC WASHER	15	GLAND	31	COUNTERWEIGHT
2A	SEAT RING RETAINING PIN	6B	DISC COTTER PIN	16	GLAND STUDS & NUTS	31A	COUNTERWEIGHT SET SCREWS
2B	SEAT RING SEAL	8	COVER GASKET	17	GLAND PACKING	33	ANTI-ROTATION PIN
3	DISC	9	COVER	18	SHAFT PIN	34	ANTI-ROTATION PIN SCREW
3A	DISC CENTER PIN	10	COVER BOLTS	30	COUNTERWEIGHT ARM HUB	35	BLIND GLAND
4	DISC ARM	11	SHAFT	30A	CWT ARM HUB SET SCREW	36	BLIND GLAND BOLTS
5A	RENEWABLE SEAT	11A	DISC ARM KEY	30B	COUNTERWEIGHT ARM BOLTS	37	BLIND GLAND O-RING
5B	SEAT FOLLOWER	12	DISC ARM SET SCREWS	30C	COUNTERWEIGHT ARM		
5C	SEAT FOLLOWER SCREWS	13	INNER SHAFT BUSHING	30D	CWT. ARM HUB KEY		



NOTE: "A" DIMENSION ON VALVES WITH RAISED FACE FLANGES DOES NOT INCLUDE THE RAISED FACE HEIGHT

F:\GA-VALVE\GA-SHOW\NC-1167-A.PRT

**GA INDUSTRIES, INC.**

**24" SWING CHECK VALVE ASSEMBLY  
W/O CUSHION CHAMBER**

STANDARD TOLERANCES UNLESS OTHERWISE NOTED	SERIAL NO.	SCALE NTS	DRAWN BY HGM
FRACTIONS SHOWN IN FIGS	REFERENCES	EFFECTIVE DATE 11-87	APPR. BY
1/16" = 0.0625"		FIG. NUMBER ILE	DRAWING NO. C-1167
1/32" = 0.03125"		REV	REV A
3/64" = 0.015625"			
1/8" = 0.125"			
1/4" = 0.25"			
3/8" = 0.375"			
1/2" = 0.5"			
3/4" = 0.75"			
1" = 1.0"			
FINISH 125-100			

		DIMENSIONS									
		A		B		C		D		E	
SIZE	IN.	MM	IN.	MM	IN.	MM	IN.	MM	IN.	MM	
24"	48	1219	28	711	20	508	34	864	21	533	

REV	DESCRIPTION	DATE	BY
A	REDRAWN, ADDED BLIND GLAND, BOLTS & SEAL (DELETED PIPE PLUG AT SHAFT END)	2-22-02	HGM