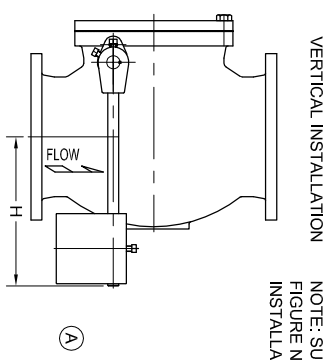
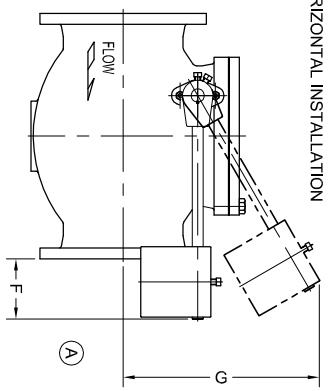


	3 X 4	4 X 6	6 X 8	8 X 10	10 X 12
	IN	MM	IN	MM	IN
A*	12	305	13	330	17 1/2
B	7	178	8 1/2	216	9
C	4 1/2	115	5 1/2	140	7
D	10	254	11	279	12
E	5	127	5	127	7
F	5	127	4	102	3
G	15	381	16	406	19
H	9 1/4	235	8 1/2	216	10 5/8
					270
					9
					229
					8
					203

* *A* DIMENSION OF VALVES WITH RAISED FACE DOES NOT INCLUDE RAISED FACE HEIGHT

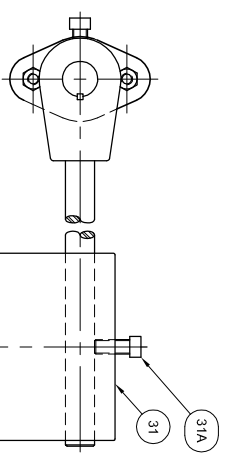
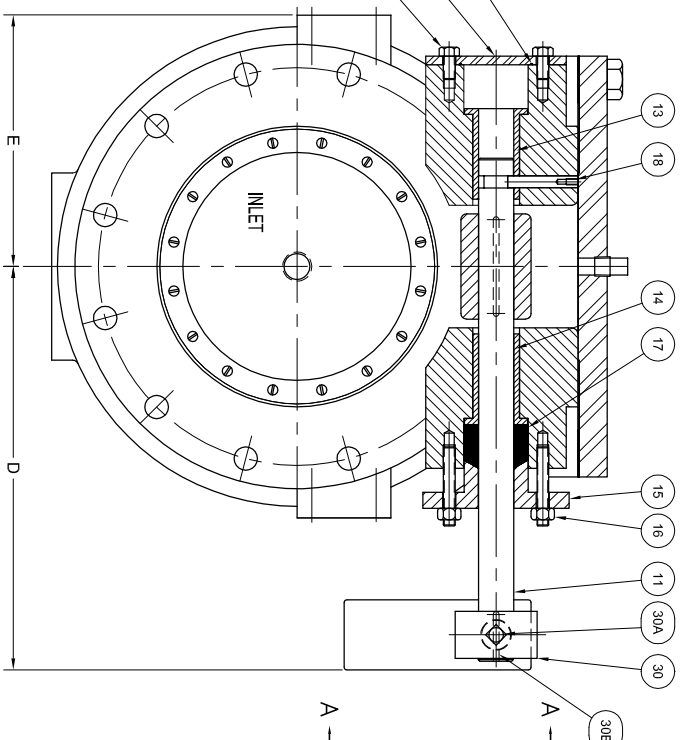
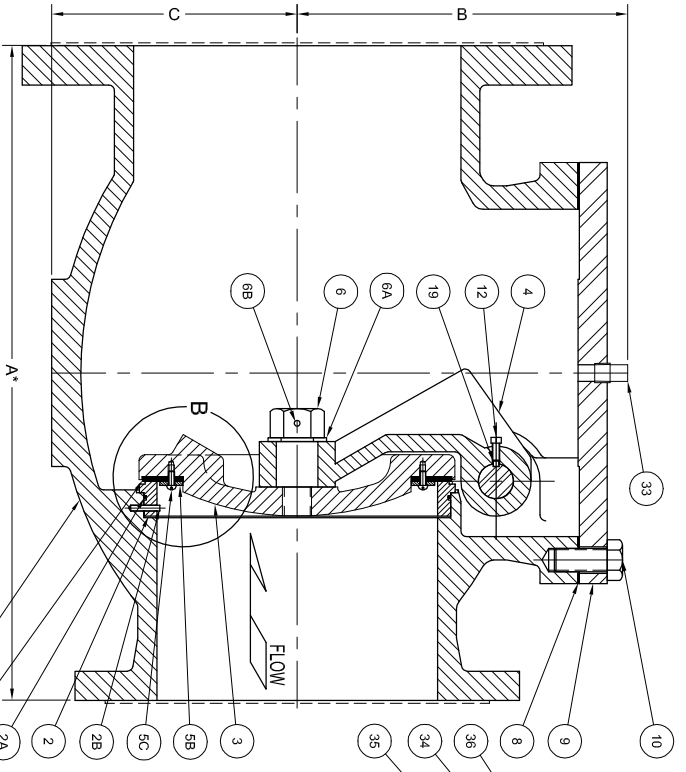
(A)



NOTE: SUFFIX 'A' USED AFTER FIGURE NUMBER FOR VERTICAL INSTALLATION (FIG. NO. 221-DA)

(C)

NO.	PART NAMES	NO.	PART NAMES
1	BODY	12	DISC ARM SET SCREW
2	BODY SEAT	13	INNER BUSHING
2A	SEAT O RING	14	OUTER BUSHING
2B	SEAT PIN	15	GLAND
3	DISC & CENTER PIN	16	GLAND STUDS
4	DISC ARM	17	GLAND PACKING
5A	REMOVABLE SEAT	18	SHAFT LOCK PIN
5B	SEAT FOLLOWER	19	DISC ARM KEY
5C	SEAT SCREWS	30	COUNTERWEIGHT ARM
6	DISC NUT	30A	COUNTERWEIGHT ARM SET SCREWS
6A	DISC NUT WASHER	30B	COUNTERWEIGHT ARM KEY
8B	DISC NUT PIN	31	COUNTERWEIGHT
8	COVER GASKET	31A	COUNTERWEIGHT SET SCREW
9	COVER	33	COVER PLUG (1/4" 20" VALVES ONLY)
10	COVER BOLTS	34	SHAFT END PLATE
11	SHAFT	35	SHAFT END PLATE BOLTS
		36	SHAFT END PLATE SEAL



C	REISED TITLER, LOCK AND VERTICAL INSTALLATION NOTE	05-30-2018	JLT
B	REDESIGNED K AND L ASSEMBLY	05-30-2018	JLT
A	ADD SIZES TO TITLE BLOCK, ELIMINATE FIGURE NUMBER TABLE PROGRAM IN AUTOCAD	10-30-2013	BRF
REV.	ADD DIMENSIONS F, G, & H; ADD DIMENSIONS FOR 12 X 14 THRU 20 X 24	DATE	BY
DESCRIPTION			

GA INDUSTRIES

3" - 10" FIGURE 221
SINGLE INCREASING LEVER & WEIGHT
SWING CHECK VALVE ASSEMBLY

DIMENSIONS IN INCHES
SERIAL NO. 221-D
FIG. NUMBER 221-D
DATE 11-15-1993
SCALE NTS
DRAWN BY HGM
APPR. BY
CHECKED BY
DESIGNED BY
REVISED BY
C-1188

J:\Autocad\GA-Valve\GA-Show\C-1188-C.dwg