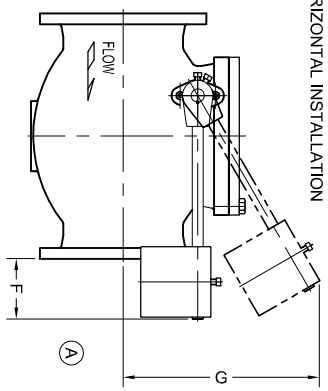


| | | | |
|----|--------|--------|--------|
| | 4 X 8 | 6 X 10 | 8 X 12 |
| | MM | MM | MM |
| A* | 13 1/2 | 18 7/8 | 22 1/4 |
| B | 8 1/2 | 216 | 229 |
| C | 5 1/2 | 140 | 7 |
| D | 11 | 279 | 12 |
| E | 5 | 127 | 7 |
| F | 4 | 102 | 3 |
| G | 16 | 406 | 19 |
| H | 8 1/2 | 216 | 10 5/8 |

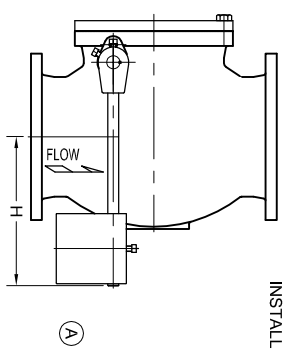
* *A* DIMENSION OF VALVES WITH RAISED FACE DOES NOT INCLUDE RAISED FACE HEIGHT

(A)

HORIZONTAL INSTALLATION



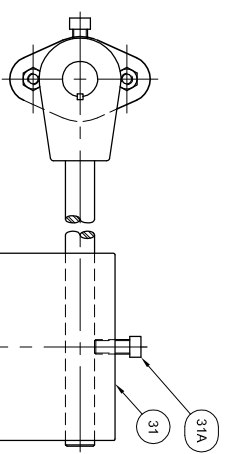
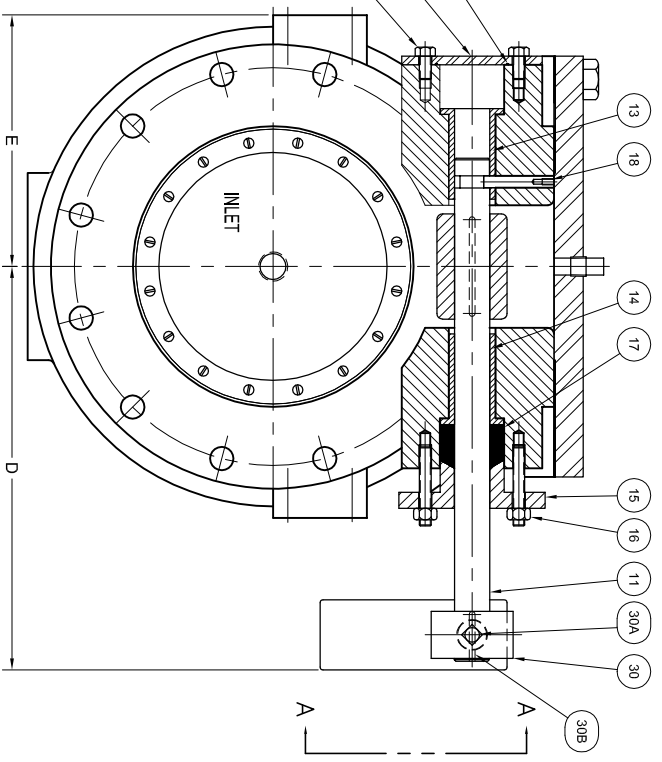
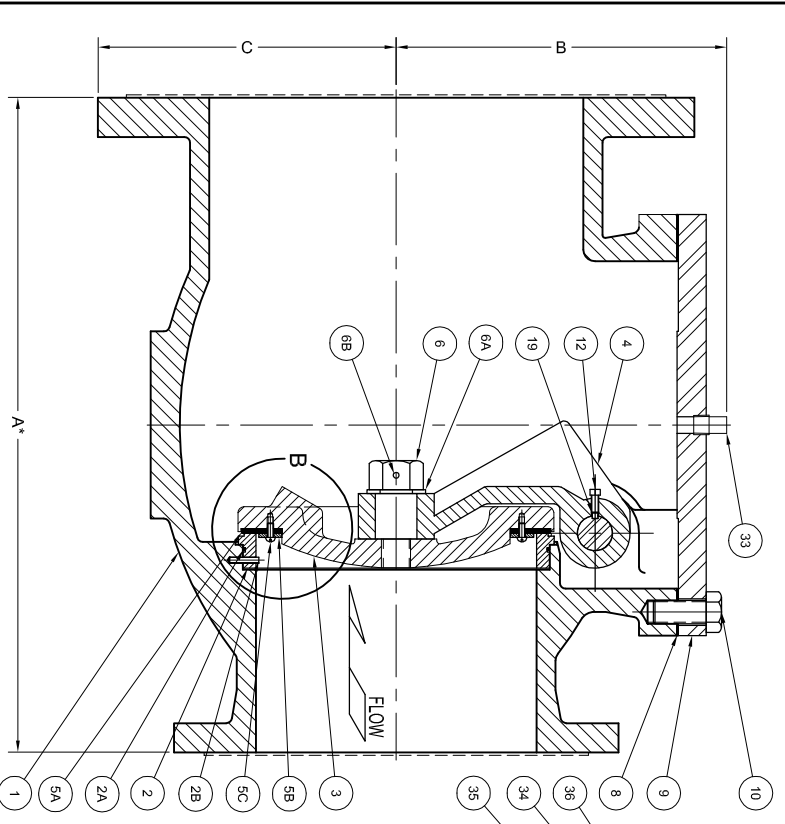
VERTICAL INSTALLATION



NOTE: SUFFIX 'A' USED AFTER FIGURE NUMBER FOR VERTICAL INSTALLATION (FIG. NO. 222-DA)

(C)

| NO. | PART NAMES | NO. | PART NAMES |
|-----|-------------------|-----|-------------------------------------|
| 1 | BODY | 12 | DISC ARM SET SCREW |
| 2 | BODY SEAT | 13 | INNER BUSHING |
| 2A | SEAT O RING | 14 | OUTER BUSHING |
| 2B | SEAT PIN | 15 | GLAND |
| 3 | DISC & CENTER PIN | 16 | GLAND STUDS |
| 4 | DISC ARM | 17 | GLAND PACKING |
| 5A | RENEWABLE SEAT | 18 | SHAFT LOCK PIN |
| 5B | SEAT FOLLOWER | 19 | DISC ARM KEY |
| 5C | SEAT SCREWS | 30 | COUNTERWEIGHT ARM |
| 5D | METAL SEAT WASHER | 30A | COUNTERWEIGHT ARM SET SCREWS |
| 6 | DISC NUT | 30B | COUNTERWEIGHT |
| 6A | DISC NUT WASHER | 31 | COUNTERWEIGHT ARM KEY |
| 6B | DISC NUT PIN | 31A | COUNTERWEIGHT SET SCREW |
| 8 | COVER GASKET | 33 | COVER PLUG (1/4" - 20" VALVES ONLY) |
| 9 | COVER | 34 | SHAFT END PLATE |
| 10 | COVER BOLTS | 35 | SHAFT END PLATE BOLTS |
| 11 | SHAFT | 36 | SHAFT END PLATE SEAL |



VIEW A-A

| REV. | DESCRIPTION | DATE | BY |
|------|---|------------|-----|
| A | ADD DIMENSIONS F, G & H. ADDED DIMENSIONS FOR 1/4" X 1/4" X 1/4" & 1/8" X 20" | 10-30-2013 | BRF |
| B | REMOVED DIMENSION AND VERTICAL INSTALLATION NOTE | 06-30-2012 | JIT |
| C | REMOVED DIMENSION AND VERTICAL INSTALLATION NOTE | 06-30-2012 | JIT |

| REV. | DESCRIPTION | DATE | BY |
|------|---|------------|-----|
| A | ADD DIMENSIONS F, G & H. ADDED DIMENSIONS FOR 1/4" X 1/4" X 1/4" & 1/8" X 20" | 10-30-2013 | BRF |
| B | REMOVED DIMENSION AND VERTICAL INSTALLATION NOTE | 06-30-2012 | JIT |
| C | REMOVED DIMENSION AND VERTICAL INSTALLATION NOTE | 06-30-2012 | JIT |

GA INDUSTRIES
 48" - 8X12" FIGURE 222
 DOUBLE INCREASING LEVER & WEIGHT
 SWING CHECK VALVE ASSEMBLY

DIMENSIONS IN INCHES
 1/8" = 0.125"
 1/4" = 0.25"
 3/8" = 0.375"
 1/2" = 0.5"
 5/8" = 0.625"
 3/4" = 0.75"
 7/8" = 0.875"
 1" = 1.0"
 1 1/8" = 1.125"
 1 1/4" = 1.25"
 1 1/2" = 1.5"
 1 3/4" = 1.75"
 2" = 2.0"
 2 1/4" = 2.5"
 2 1/2" = 2.625"
 2 3/4" = 2.75"
 3" = 3.0"
 3 1/4" = 3.375"
 3 1/2" = 3.5"
 3 3/4" = 3.625"
 4" = 4.0"
 4 1/4" = 4.375"
 4 1/2" = 4.5"
 4 3/4" = 4.625"
 5" = 5.0"
 5 1/4" = 5.375"
 5 1/2" = 5.5"
 5 3/4" = 5.625"
 6" = 6.0"
 6 1/4" = 6.375"
 6 1/2" = 6.5"
 6 3/4" = 6.625"
 7" = 7.0"
 7 1/4" = 7.375"
 7 1/2" = 7.5"
 7 3/4" = 7.625"
 8" = 8.0"
 8 1/4" = 8.375"
 8 1/2" = 8.5"
 8 3/4" = 8.625"
 9" = 9.0"
 9 1/4" = 9.375"
 9 1/2" = 9.5"
 9 3/4" = 9.625"
 10" = 10.0"
 10 1/4" = 10.375"
 10 1/2" = 10.5"
 10 3/4" = 10.625"
 11" = 11.0"
 11 1/4" = 11.375"
 11 1/2" = 11.5"
 11 3/4" = 11.625"
 12" = 12.0"

SERIAL NO. DATE FIG. NUMBER TOLERANCE OF GA INDUSTRIES DRAWING NO. REFERENCE C4 C-1184

DRAWN BY ACB
 SCALE NTS
 DATE 10/25/13

J:\Autocad\GA-Valve\GA-Show\C-1184-C.dwg