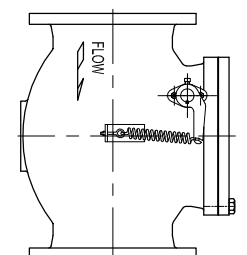


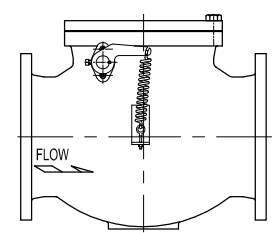
		2 1/2"		3"		4"		6"		8"		10"		12"		14"		16"		18"		20"		
IN	MM	IN	MM	IN	MM	IN	MM	IN	MM	IN	MM	IN	MM	IN	MM	IN	MM	IN	MM	IN	MM	IN	MM	
A*	12	305	12	305	13	330	17 1/2	445	18	457	23	584	28	711	33	838	36	914	40	1016	40	1016	40	1016
B	7	178	7	178	8 1/2	216	9	229	12	305	14	356	16	406	22	559	23	584	24	610	24	610	24	610
C	5	127	5	127	5	127	6	152	9	229	9	229	11	279	13	330	14	356	17 1/4	438	17 1/4	438	17 1/4	438
D	10	254	10	254	11	279	12	305	14	356	15	381	17	432	20	508	24	610	28	711	28	711	28	711
E	5	127	5	127	5	127	7	178	8	203	9	229	11	279	14	356	16	406	18	457	18	457	18	457

\* "A" DIMENSION OF VALVES WITH RAISED FACE DOES NOT INCLUDE RAISED FACE HEIGHT

Ⓐ



HORIZONTAL INSTALLATION

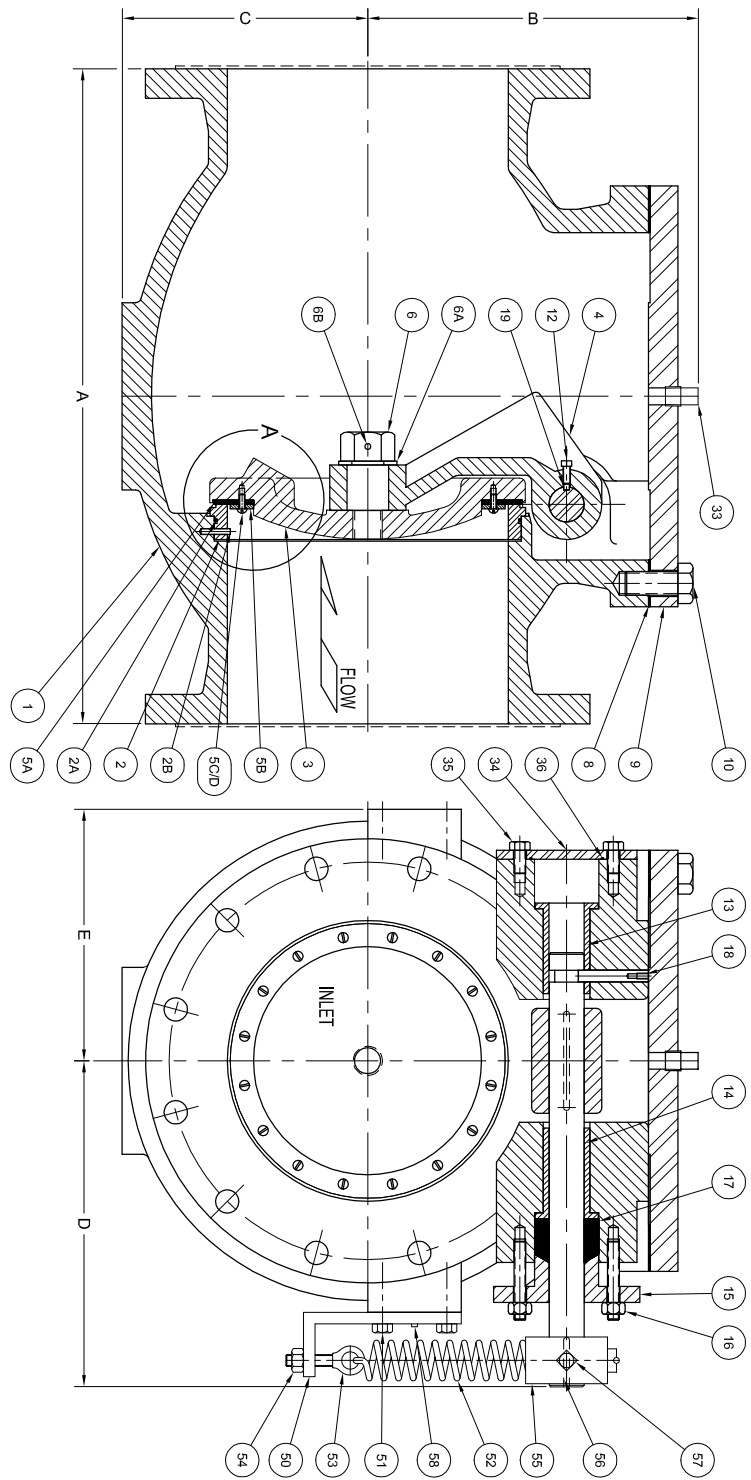


VERTICAL INSTALLATION

NOTE: SUFFIX "A" USED AFTER FIGURE NUMBER FOR VERTICAL INSTALLATION (FIG. NO. 230-DA)

Ⓒ

NO.	PART NAMES	NO.	PART NAMES
1	BODY	14	OUTER BUSHING
2	BODY SEAT	15	GLAND
2A	SEAT O RING	16	GLAND STUDS
2B	SEAT PIN	17	GLAND PACKING
3	DISC & CENTER PIN	18	SHAFT LOCK PIN
4	DISC ARM	19	DISC ARM KEY
5A	RENEWABLE SEAT	33	COVER PLUG
5B	SEAT FOLLOWER	34	SHAFT END PLATE
5C	SEAT SCREWS	35	SHAFT END PLATE BOLTS
5D	SEAT WASHER	36	SHAFT END PLATE SEAL
6	DISC NUT	50	SPRING MOUNTING BRACKET
6A	DISC NUT WASHER	51	SPRING MOUNTING BRACKET BOLTS
6B	DISC NUT PIN	52	SPRING
8	COVER GASKET	53	EYEBOLT
9	COVER	54	NUT
10	COVER BOLTS	55	SPRING ARM
11	SHAFT	56	SPRING ARM KEY
12	DISC ARM SET SCREW	57	SPRING ARM SET SCREW
13	INNER BUSHING	58	SPRING BRACKET PINS



REV.	DESCRIPTION	DATE	BY
A	ADD DIMENSIONS FOR 1/2", 3/4", & 20"	10-30-2013	BRF
B	REMOVED DIM VIEW	06-24-2018	JH
C	REVISED TITLE BLOCK AND VERTICAL INSTALLATION NOTE	06-30-2018	JT

GA INDUSTRIES	GA INDUSTRIES	GA INDUSTRIES	GA INDUSTRIES
2 1/2" - 20" FIGURE 230	SWING CHECK VALVE	LEVER & SPRING ASSEMBLY	

SERIAL NO.	DATE	FIG. NO.	SCALE
C4	11-04-18	11-04-18	1:1

REV.	DATE	BY
C	11-16	C