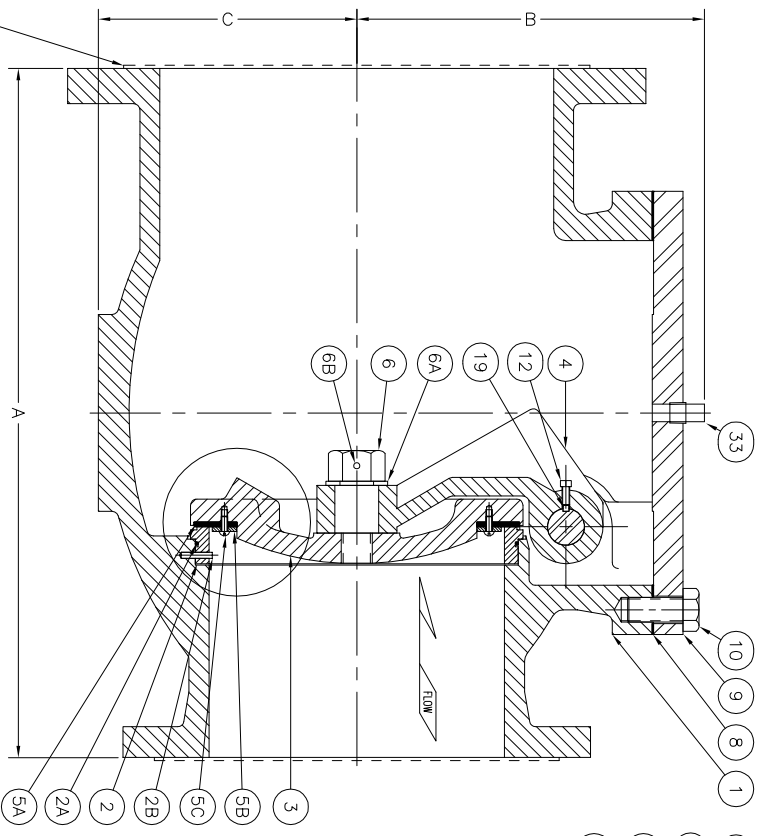
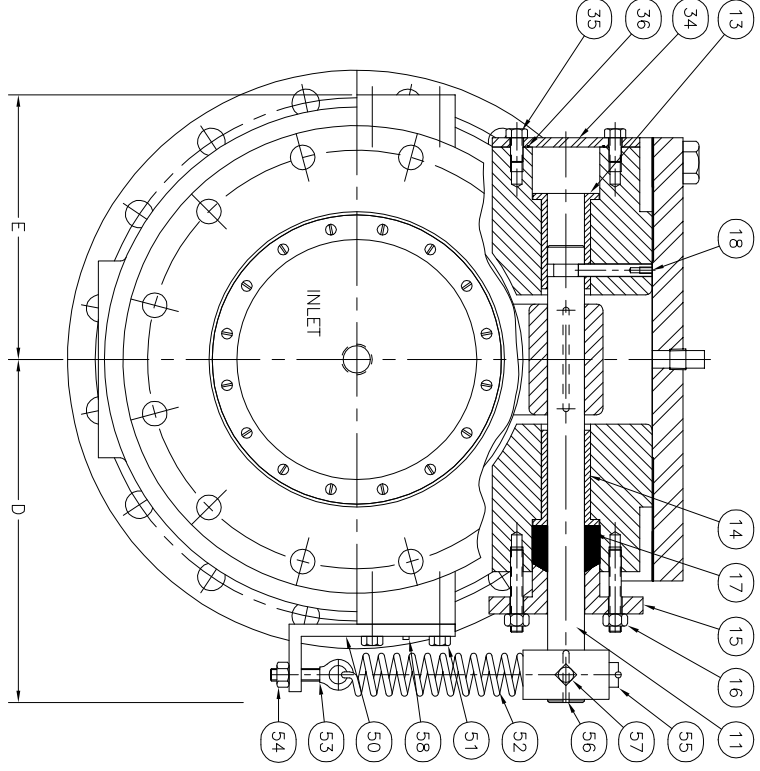
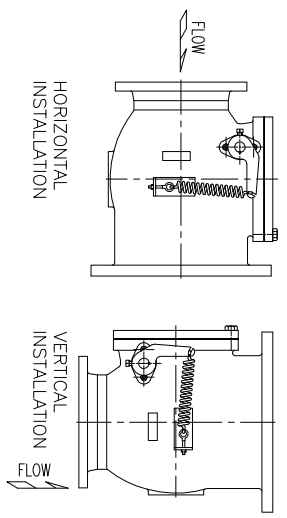


DIMENSIONS					
VALVE SIZE	4" x 8"	6" x 10"	8" x 12"		
	in.	mm	in.	mm	in.
A	13 1/2	343	18 7/8	479	22 1/4
B	8 1/2	216	9	229	12
C	5	127	6	152	9
D	11	279	12	305	14
E	5	127	7	178	9



NOTE:
"A" DIMENSION ON VALVES WITH RAISED FACE FLANGES DOES NOT INCLUDE THE RAISED FACE HEIGHT



NO.	PART NAMES	NO.	PART NAMES
1	BODY	15	GLAND
2	BODY SEAT	16	GLAND STUDS
2A	SEAT O-RING	17	GLAND PACKING
2B	SEAT PIN	18	SHAFT LOCK PIN
3	DISC & CENTER PIN	19	DISC ARM KEY
4	DISC ARM	33	COVER PLUG
5A	RENEWABLE SEAT	34	SHAFT END PLATE
5B	SEAT FOLLOWER	35	SHAFT END PLATE BOLTS
5C	SEAT SCREWS	36	SHAFT END PLATE SEAL
6	DISC NUT	50	SPRING MOUNTING BRACKET
6A	DISC NUT WASHER	51	SPRING MOUNTING BRACKET BOLTS
6B	DISC NUT PIN	52	SPRING
8	COVER GASKET	53	EYEBOLT
9	COVER	54	NUT
10	COVER BOLTS	55	SPRING ARM
11	SHAFT	56	SPRING ARM KEY
12	DISC ARM SET SCREWS	57	SPRING ARM SET SCREW
13	INNER BUSHING	58	SPRING BRACKET PINS
14	OUTER BUSHING		

REV.	DESCRIPTION	DATE	BY
E	REVISED TITLEBLOCK	05-30-2019	JT
D	REMOVED SIZES 12X16 AND 10X14	08-09-2018	JH
C	ADDED 12X16 SIZE TO DIMENSION BLOCK	01-16-2017	HGM
B	REDRAWN ON AUTO CAD	12-07-2010	HGM
A	REDRAWN ON CADKEY, ADDED 6 X 10 DIMENSIONS & CORRECTED 10 X 14 DIMENSIONS	11-24-1999	KJB

GA INDUSTRIES

4x8"-8x12" FIGURE 232 DOUBLE INCREASING LEVER & SPRING SWING CHECK VALVE GENERAL ARRANGEMENT & DIMENSIONS

SMALL NUMBERS (UNLESS OTHERWISE NOTED)	SERIAL NO.	SCALE	DRAWN BY
INDICATES DIMENSIONS ONLY	NTS	NTS	RRS
INDICATES DIMENSIONS ONLY	REFERENCES	EFFECTIVE DATE	APPR. BY
INDICATES DIMENSIONS ONLY	FIG. NUMBER	12-07-1992 TO	
INDICATES DIMENSIONS ONLY	FILE	C	DRAWING NO.
INDICATES DIMENSIONS ONLY			C-1255
INDICATES DIMENSIONS ONLY			REV.
INDICATES DIMENSIONS ONLY			E