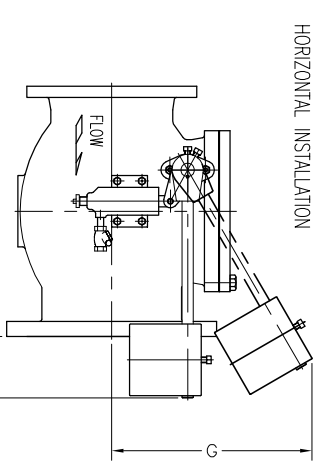
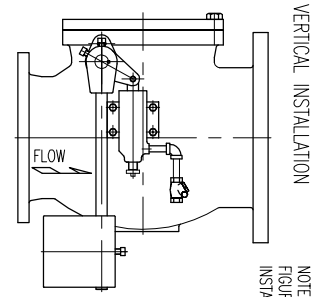


		DIMENSIONS														
		3" X 4"			4" X 6"			6" X 8"			8" X 10"			10" X 12"		
NO.	IN.	MM	IN.	MM	IN.	MM	IN.	MM	IN.	MM	IN.	MM	IN.	MM		
A	12	305	13	330	17 1/2	445	18	457	23	584						
B	7	178	8 1/2	216	9	229	12	305	14	356						
C	4 1/2	115	5 1/2	140	7	178	8	203	10	254						
D	10	254	11	279	12	305	14	356	15	381						
E	5	127	5	127	7	178	8	203	9	229						
F	5	127	4	102	3	77	3	77	---	---						
G	15	381	16	406	19	483	21	533	23	584						



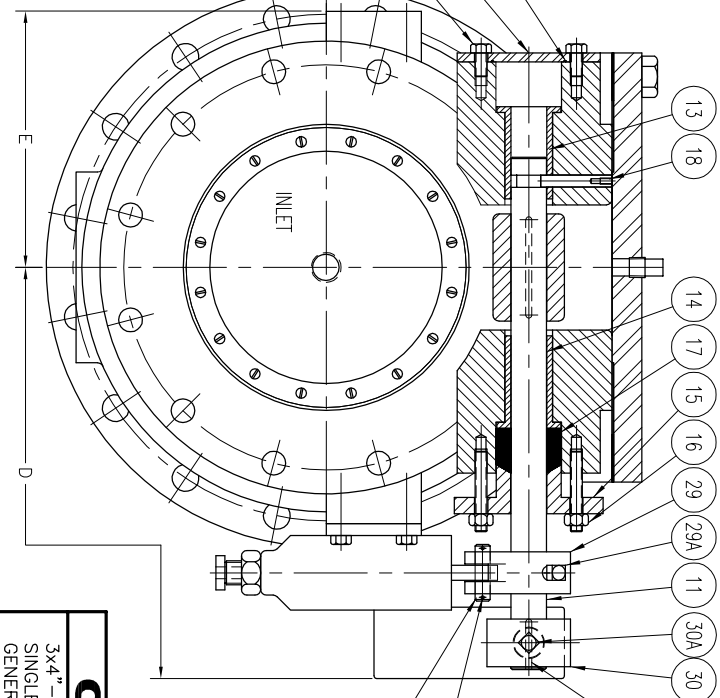
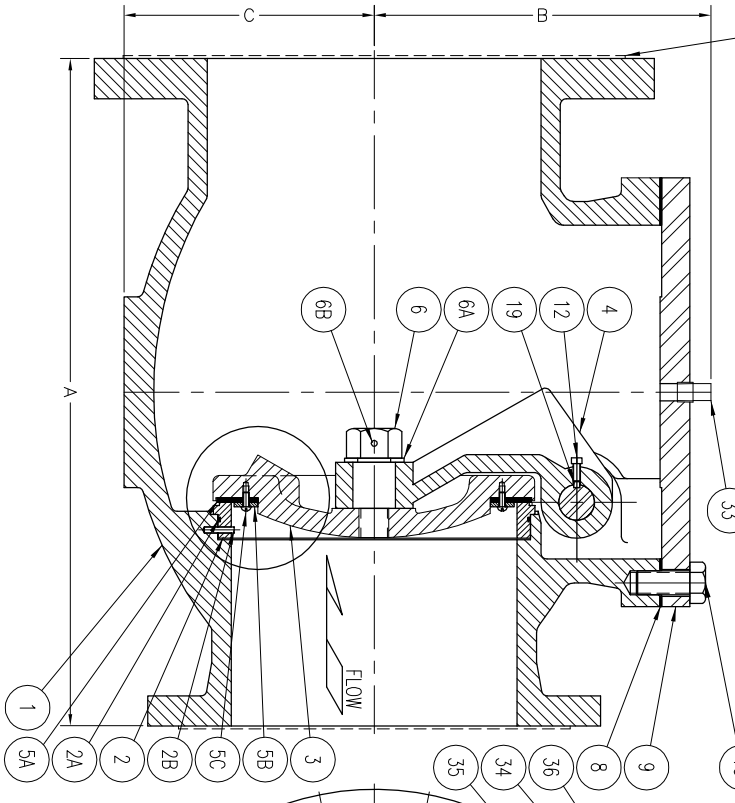
HORIZONTAL INSTALLATION



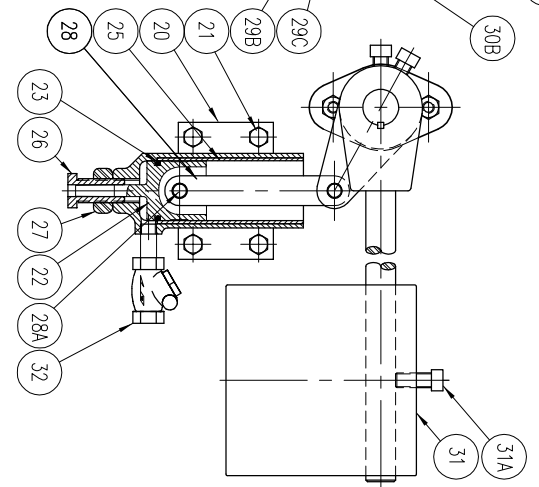
VERTICAL INSTALLATION

NOTE: SUFFIX "A" USED AFTER FIGURE NUMBER FOR VERTICAL INSTALLATION (FIG. NO. 251-DA)

NOTE: "A" DIMENSION ON VALVES WITH RAISED FACE FLANGES DOES NOT INCLUDE THE RAISED FACE HEIGHT



NO.	PART NAMES	NO.	PART NAMES
1	BODY	20	CUSHION CHAMBER
2	BODY SEAT	21	CHAMBER SCREWS
2A	SEAT O-RING	22	PLUNGER
2B	SEAT PIN	23	PLUNGER O-RING
3	DISC & CENTER PIN	25	CHAMBER LINER
4	DISC ARM	26	ADJUSTING SLEEVE
5A	RENEWABLE SEAT	27	SLEEVE LOCKNUT
5B	SEAT FOLLOWER	28	LINK
5C	SEAT SCREWS	28A	LINK PIN
6	DISC NUT	29	LEVER
6A	DISC NUT WASHER	29A	LEVER SET SCREW
6B	DISC NUT PIN	29B	LEVER PIN
8	COVER GASKET	29C	LEVER COTTER PIN
9	COVER	30	COUNTERWEIGHT ARM
10	COVER BOLTS	30A	COUNTERWEIGHT ARM SET SCREWS
11	SHAFT	30B	COUNTERWEIGHT ARM KEY
12	DISC ARM SET SCREW	31	COUNTERWEIGHT
13	INNER BUSHING	31A	COUNTERWEIGHT SET SCREW
14	OUTER BUSHING	32	CHECK VALVE
15	GLAND	33	COVER PLUG (1 1/2" - 20" VALVES ONLY)
16	GLAND STUDS	34	SHAFT END PLATE
17	GLAND PACKING	35	SHAFT END PLATE BOLTS
18	SHAFT LOCK PIN	36	SHAFT END PLATE SEAL
19	DISC ARM KEY		



# GA INDUSTRIES

3x4" - 10x12" FIGURE 251  
SINGLE INCHING SWING CHECK VALVE  
GENERAL ARRANGEMENT AND DIMENSIONS

REV.	DESCRIPTION	DATE	BY
C	REVISED TITLEBLOCK AND REMOVED TABLE	05-30-2019	UJ
B	REMOVED 12" AND LARGER	08-09-2018	LH
A	REDRAWN ON AUTOCAD	07-24-2009	HGM

STANDARD TOLERANCES (UNLESS OTHERWISE NOTED)	SCALE	SERIAL NO.	DRAWN BY
FINISH SURFACES: .005 HIDDEN SURFACES: .010 HOLE SURFACES: .010 X = .010 Y = .010 Z = .010 THREADS: 2X UNF-8 FINISH: 12.5, XI RMS	N.T.S.		DAB
REFERENCES	EFFECTIVE DATE	FILE	DRAWING NO.
SEE CHART	01-29-1993 TO	C	C-1066
			REV. C

J:\GA-VALVE\GA-SHOW\C-1066-C.DWG