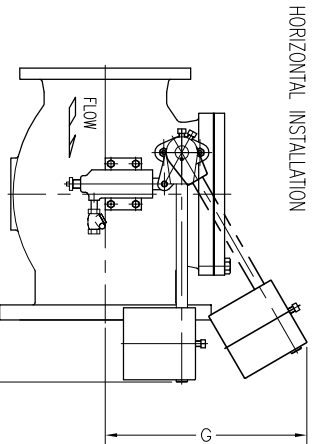
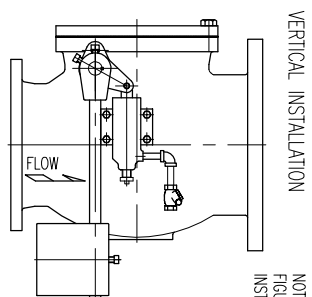


DIMENSIONS					
	4" x 8"	6" x 10"	8" x 12"		
NO.	IN.	MM	IN.	MM	IN.
A	13 1/2	343	18 7/8	479	22 1/4
B	8 1/2	216	9	229	12
C	5	127	6	152	9
D	11	279	12	305	14
E	5	127	7	178	8
F	4	102	3	77	3
G	16	406	19	483	21



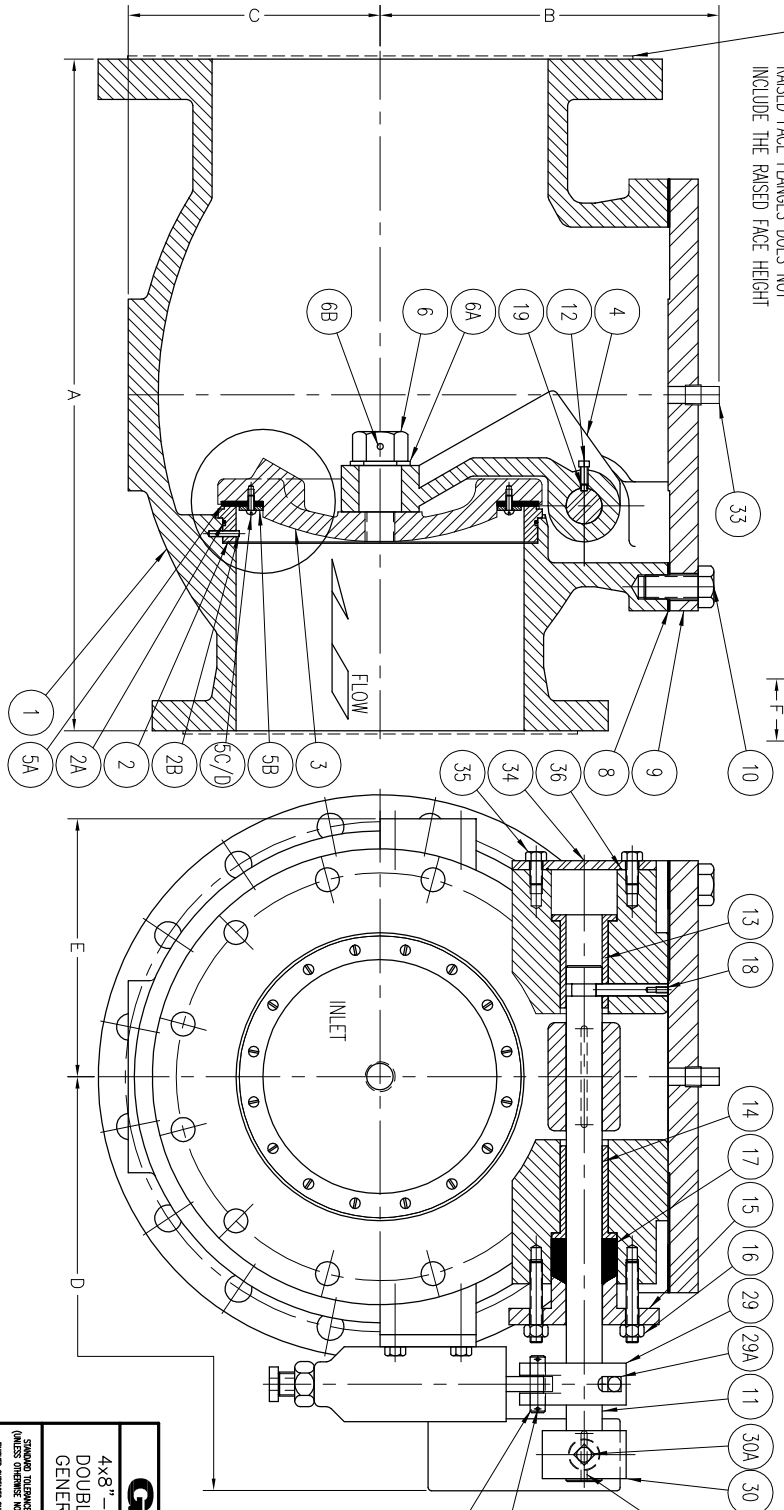
HORIZONTAL INSTALLATION



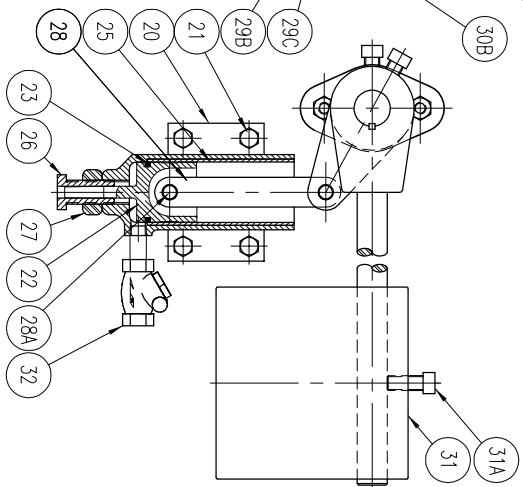
VERTICAL INSTALLATION

NOTE: SUFFIX "A" USED AFTER FIGURE NUMBER FOR VERTICAL INSTALLATION (FIG. NO. 252-DA)

NOTE: "A" DIMENSION ON VALVES WITH RAISED FACE FLANGES DOES NOT INCLUDE THE RAISED FACE HEIGHT



NO.	PART NAMES	NO.	PART NAMES
1	BODY	19	DISC ARM KEY
2	BODY SEAT	20	CUSHION CHAMBER
2A	SEAT O-RING	21	CHAMBER SCREWS
2B	SEAT PIN	22	PLUNGER
3	DISC & CENTER PIN	23	PLUNGER O-RING
4	DISC ARM	25	CHAMBER LINER
5A	RENEWABLE SEAT	26	ADJUSTING SLEEVE
5B	SEAT FOLLOWER	27	SLEEVE LOCKNUT
5C	SEAT SCREWS	28	LINK
5D	SEAT WASHER	28A	LINK PIN
6	DISC NUT	29	LEVER
6A	DISC NUT WASHER	29A	LEVER SET SCREW
6B	DISC NUT PIN	29B	LEVER PIN
8	COVER GASKET	29C	LEVER COTTER PIN
9	COVER	30	COUNTERWEIGHT ARM
10	COVER BOLTS	30A	COUNTERWEIGHT ARM SET SCREWS
11	SHAFT	30B	COUNTERWEIGHT ARM KEY
12	DISC ARM SET SCREW	31	COUNTERWEIGHT
13	INNER BUSHING	31A	COUNTERWEIGHT SET SCREW
14	OUTER BUSHING	32	CHECK VALVE
15	GLAND STUDS	33	COVER PLUG (4" 20" VALVES ONLY)
16	GLAND	34	SHAFT END PLATE
17	GLAND PACKING	35	SHAFT END PLATE BOLTS
18	SHAFT LOCK PIN	36	SHAFT END PLATE SEAL



J:\GA-VALVE\GA-SHOW\C-1363-C.DWG

# GA INDUSTRIES

4x8"-8x12" FIGURE 252  
DOUBLE INCREASING SWING CHECK VALVE  
GENERAL ARRANGEMENT AND DIMENSIONS

REV.	DESCRIPTION	DATE	BY
C	REVISED TITELBLOCK AND REMOVED TABLE	05-30-2019	JT
B	REVISED TABLE AND BALLOON	08-09-2018	JH
A	REVISED DIMENSION TABLE AND TITLE BLOCK-WAS 2 1/2"-20"	10-13-2013	HGM

SERIAL NO.	SCALE	N.T.S.	DRAWN BY	APPR. BY	REV.
			RJT	JUF	C

REFERENCES	FIG. NUMBER	FILE	DRAWING NO.
SEE ABOVE		C	C-1363