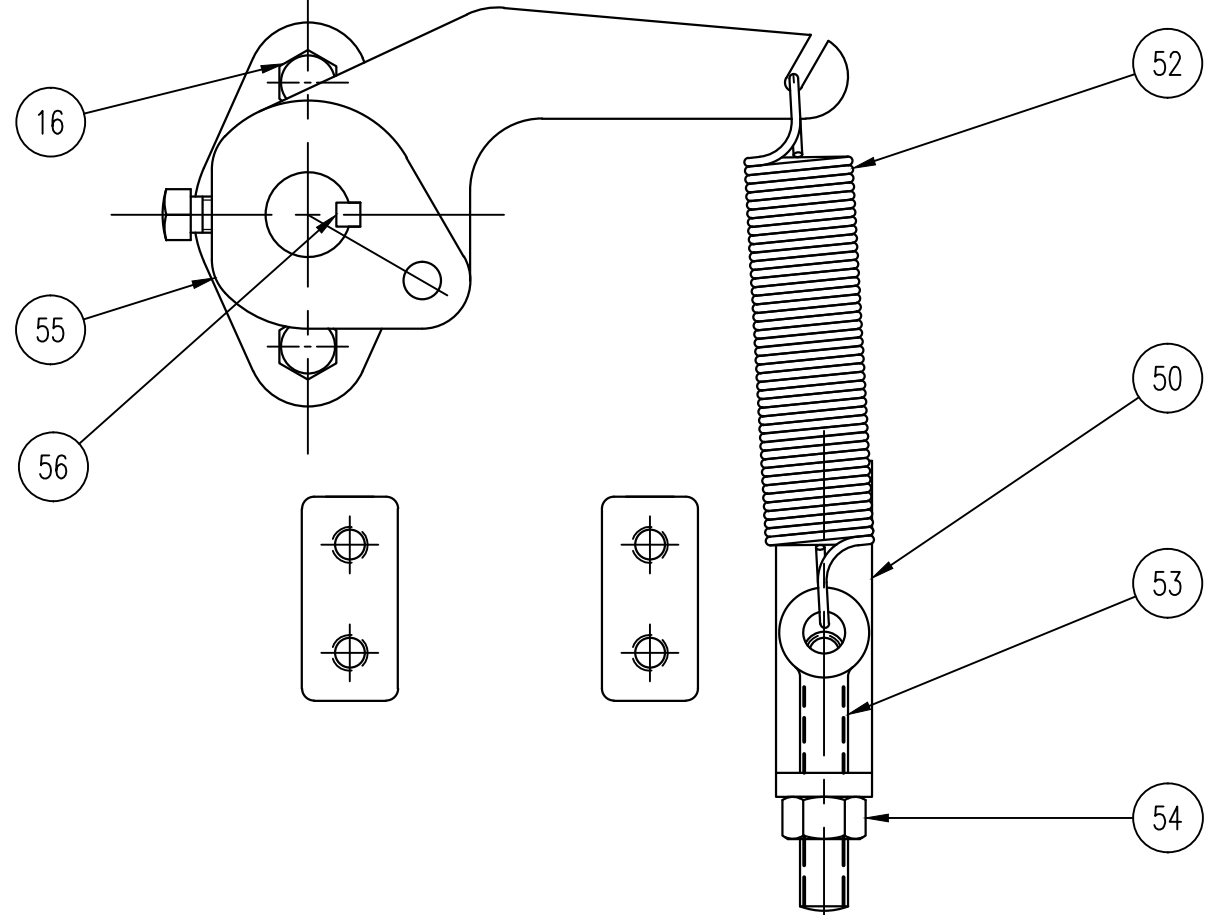
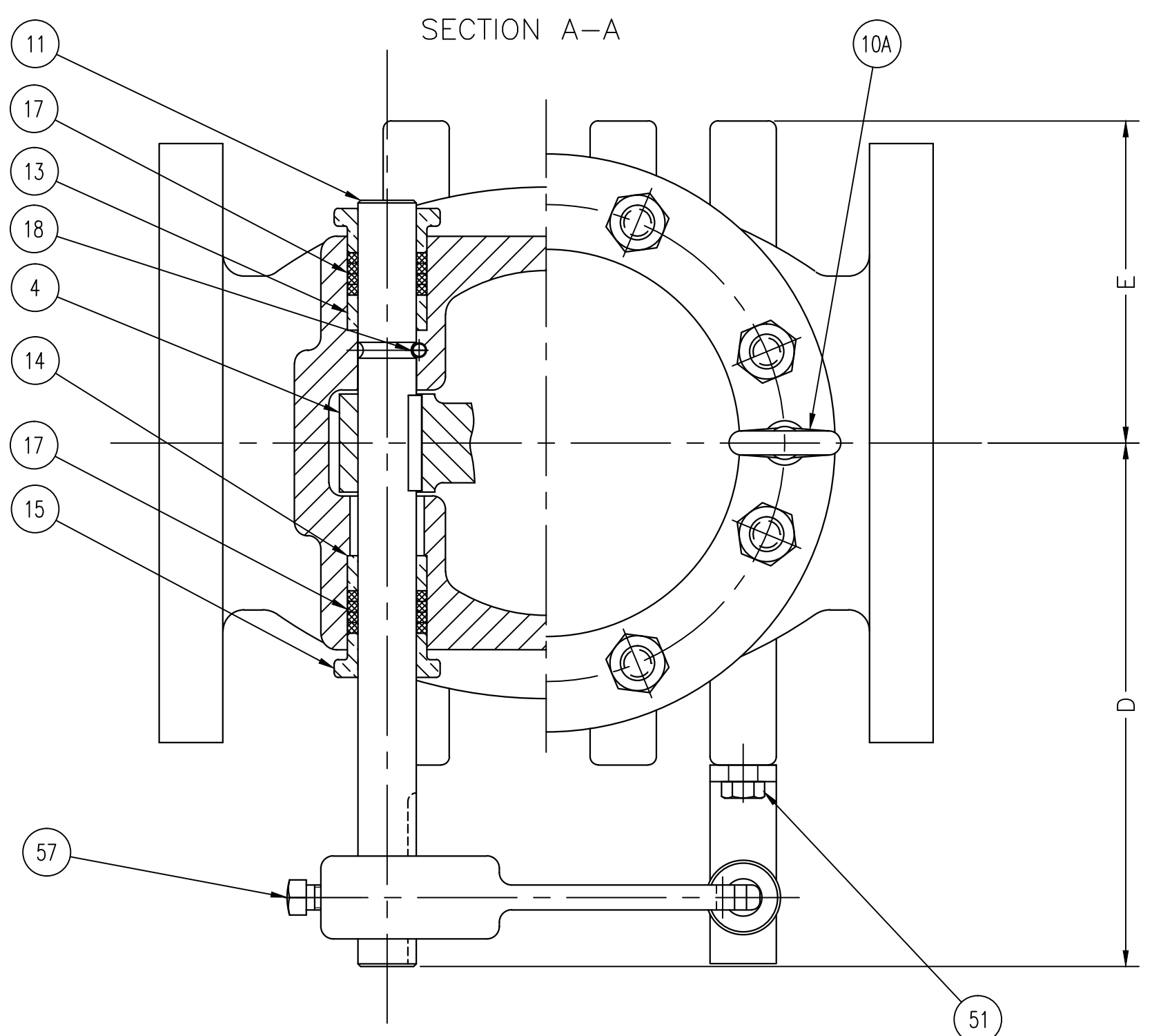
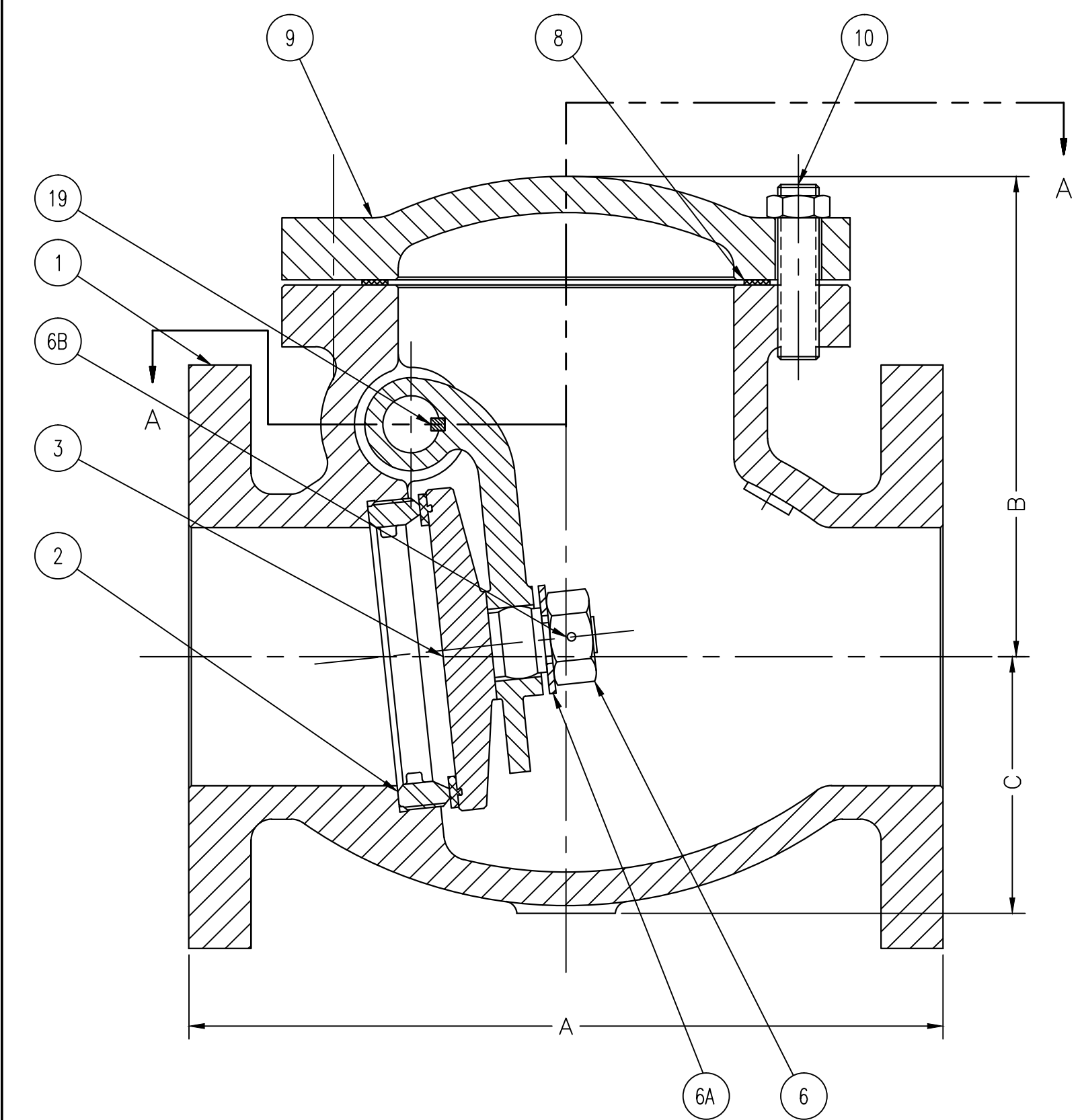


REV.	DESCRIPTION	DATE	BY
A	REMOVED 16"-30" DIMENSIONS, REMOVED SIZES 16"-30" FROM DESCRIPTION	06-15-2007	JB



NO.	DESCRIPTION
1	BODY
2	BODY SEAT
3	DISC W/SEAT
4	DISC ARM
6	DISC NUT
6A	DISC NUT WASHER
6B	DISC NUT PIN
8	COVER GASKET
9	COVER
10	COVER STUD W/NUT
10A	COVER EYE BOLT
11	SHAFT
13	INNER BUSHING
14	OUTER BUSHING
15	GLAND
16	GLAND BOLT
17	PACKING
18	SHAFT LOCK PIN
19	DISC ARM KEY
50	SPRING MOUNTING BRACKET
51	SPRING BRACKET BOLTS
52	SPRING
53	EYE BOLT
54	NUT
55	SPRING ARM
56	SPRING ARM KEY
57	SPRING ARM SET SCREW

DIMENSIONS											
SIZE		A		B		C		D		E	
INCHES	mm	INCHES	mm	INCHES	mm	INCHES	mm	INCHES	mm	INCHES	mm
3"	80	9 1/2	241	6 1/4	157	3	76	9 3/4	247	4 1/4	102
4"	100	11 1/2	292	7 1/2	186	3 3/4	94	10 1/4	259	5	122
6"	150	14	356	9 1/2	237	4 7/8	125	12	301	6 1/4	158
8"	200	19 1/2	495	11 1/4	282	5	163	14 1/4	358	7 3/4	193
10"	250	24 1/2	622	14 1/4	357	7 1/2	188	15 1/4	387	9 1/4	233
12"	300	27 1/2	698	16 1/2	417	9	224	16 1/2	416	10 1/4	260
14"	350	31	787	17 3/4	447	10 1/2	265	17 1/2	439	11 1/4	280

NOTE: FLANGES PER ANSI B16.1, 125 Lb. CLASS

GA INDUSTRIES, INC.

③ 3"-14" LUDLOW FIGURE 340-S SWING CHECK VALVE W/ SPRING & LEVER

STANDARD TOLERANCES (UNLESS OTHERWISE NOTED) FINISHED SURFACES ONLY DIMENSIONS SHOWN IN INCHES .x = ±.02 .xx = ±.01 .xxx = ±.002 FRACTIONS ±1/64" ANGLES ±1° FINISH Ⓢ-xx RMS	SERIAL NO.	SCALE	DRAWN BY JB	
		NONE	APPR. BY JJF	
REFERENCES	EFFECTIVE DATE	01-16-2007 TO		
	FIG. NUMBER	FILE	DRAWING NO.	REV.
	340-S	C	C-1365	A

J:\GA-VALVE\GA-SHOW\C-1365-A.DWG

AVAILABLE IN SIZES I AND III