

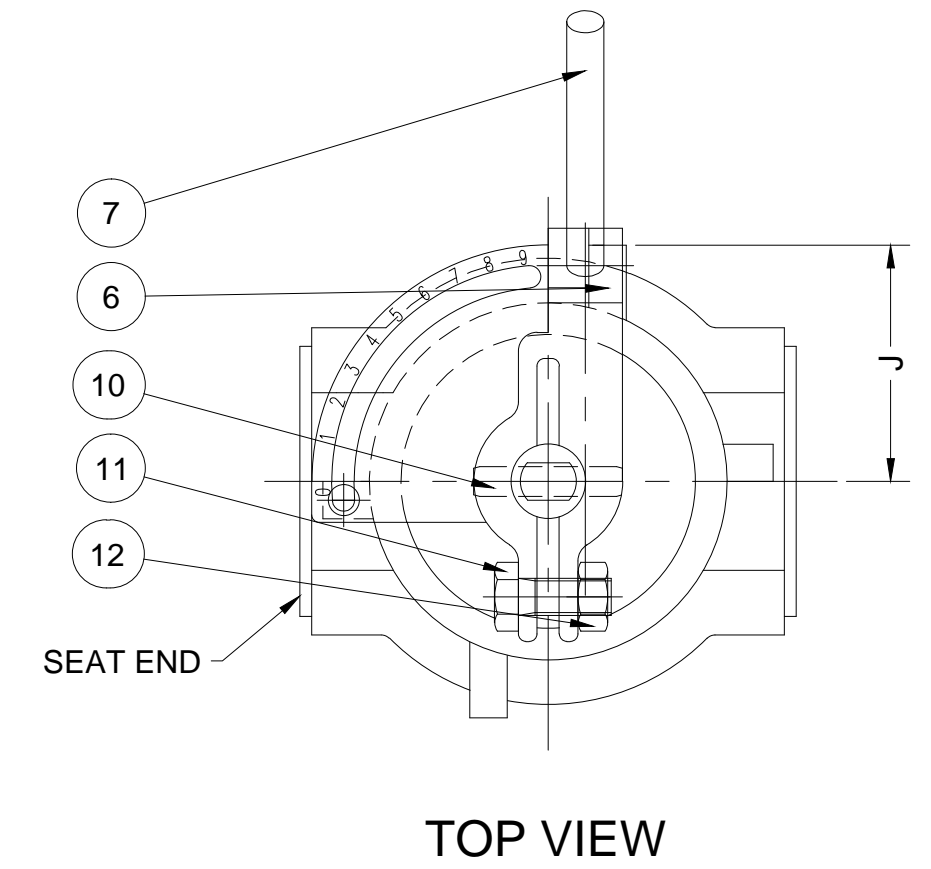
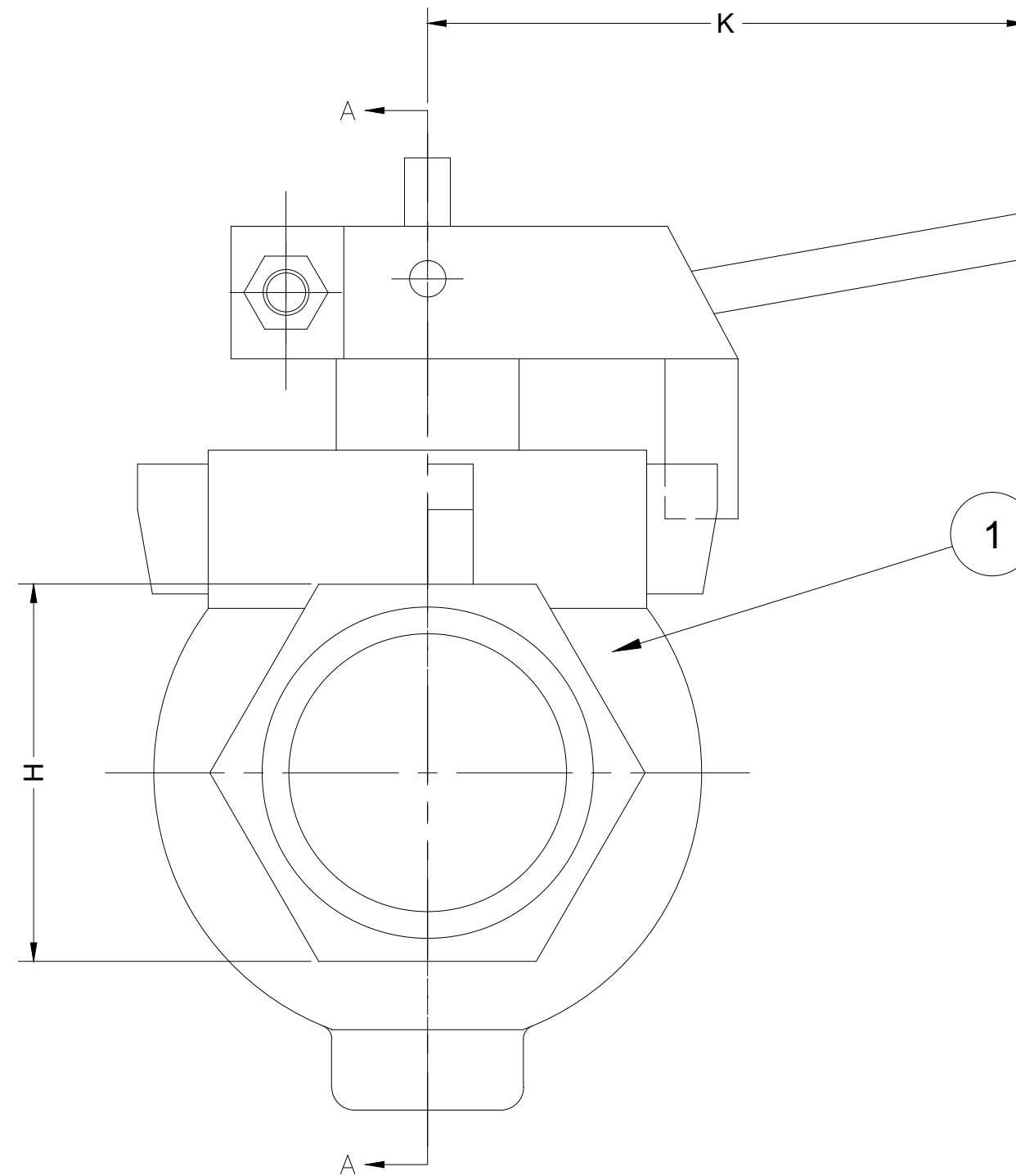
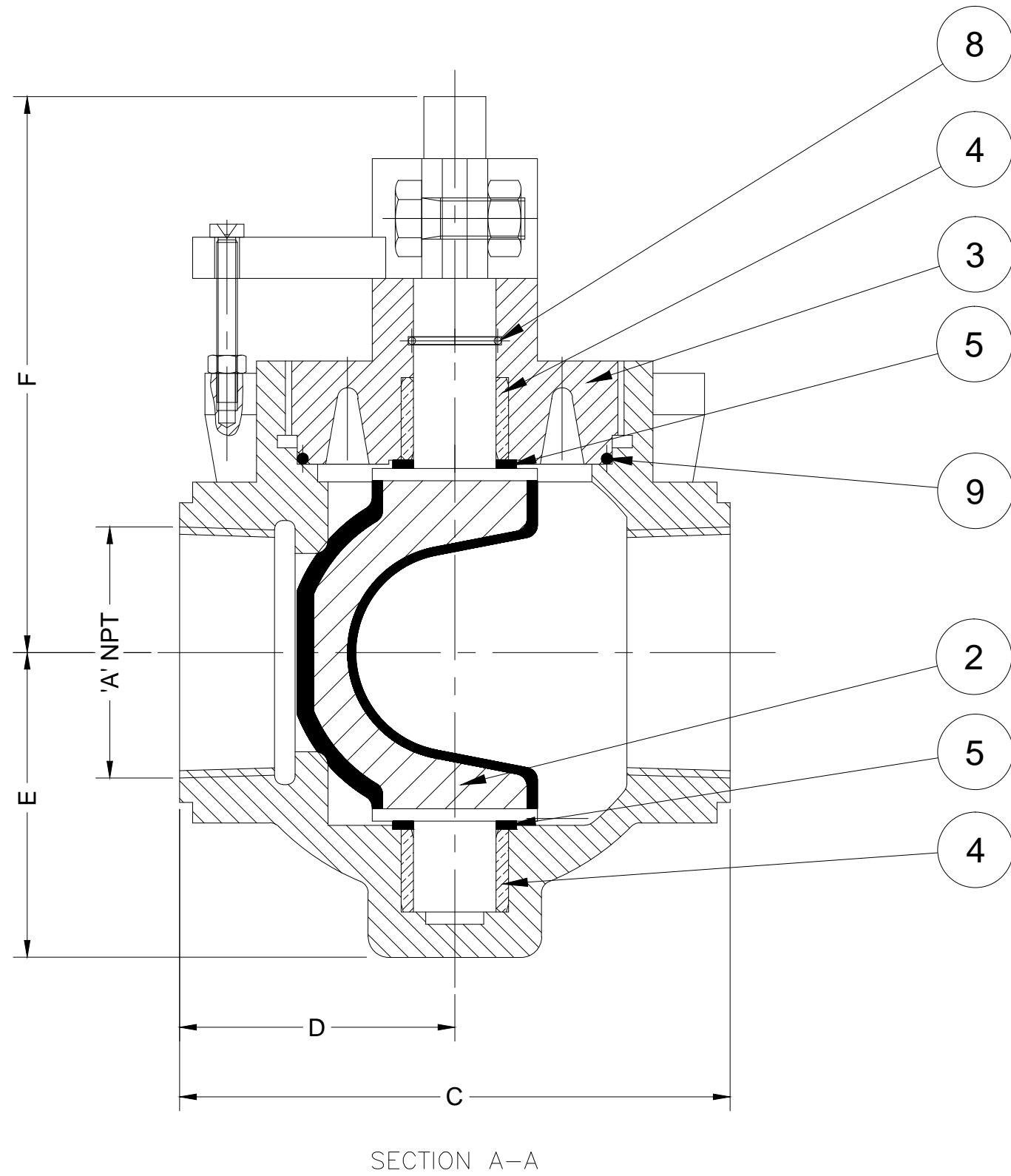
VALVE DIMENSIONS

| SIZE   | 'A' NPT |      | C   |      | D   |      | E   |      | F   |       | H   |      | J   |      | K   |    | WEIGHT IN LBS. |
|--------|---------|------|-----|------|-----|------|-----|------|-----|-------|-----|------|-----|------|-----|----|----------------|
|        | IN.     | MM   | IN. | MM   | IN. | MM   | IN. | MM   | IN. | MM    | IN. | MM   | IN. | MM   | IN. | MM |                |
| 1/2"   | 1/2"    | 3.75 | 95  | 2.10 | 53  | 2.00 | 51  | 3.70 | 94  | 1 7/8 | 48  | 2.00 | 51  | 5.12 | 130 | 4  |                |
| 1"     | 1"      | 3.75 | 95  | 2.18 | 55  | 2.00 | 51  | 3.80 | 97  | 1 7/8 | 48  | 2.00 | 51  | 5.90 | 150 | 5  |                |
| 1 1/2" | 1 1/2"  | 4.90 | 124 | 2.63 | 67  | 2.38 | 60  | 4.30 | 109 | 2 3/4 | 70  | 2.30 | 58  | 6.50 | 165 | 9  |                |
| 2"     | 2"      | 5.50 | 140 | 2.90 | 74  | 3.00 | 76  | 5.30 | 135 | 3 1/4 | 83  | 2.50 | 64  | 7.09 | 180 | 13 |                |
| 2 1/2" | 2 1/2"  | 6.25 | 159 | 3.38 | 86  | 3.50 | 89  | 5.70 | 145 | 4     | 102 | 3.00 | 76  | 7.87 | 200 | 20 |                |

NOTES:

1. FEMALE NPT ENDS
2. IN COMPLIANCE WITH AWWA C517
3. COLD WORKING PRESSURE: 175 PSI
4. HYDROSTATIC TEST PRESSURE: 265 PSI
5. ACTUATOR SUPPLIED IN POSITION A UNLESS SPECIFIED OTHERWISE

| PARTS LIST |                                     |
|------------|-------------------------------------|
| ITEM NO.   | DESCRIPTION                         |
| 1          | BODY                                |
| 2          | PLUG                                |
| 3          | COVER                               |
| 4          | BEARING                             |
| 5          | GRIT EXCLUDER SEAL                  |
| 6          | TORQUE COLLAR                       |
| 7          | HANDLE                              |
| 8          | O-RING                              |
| 9          | COVER O-RING                        |
| 10         | SPRING PIN                          |
| 11         | BOLT                                |
| 12         | NUT                                 |
| 13         | TORQUE ADJUSTMENT SCREW w/ LOCK NUT |



| D    | CORRECTED DIMENSION 'K' IN TABLE FOR ALL SIZES | 07-17-2018 | SWR |
|------|--|------------|-----|
| C    | VALID FOR NON AIS VALVES                       | 09-21-2017 | BRF |
| B    | POSITIONAL VIEWS NOT APPLICABLE                | 01-26-2017 | BRF |
| A    | ADDED PART 13 TO PARTS LIST                    | 10-24-2016 | BRF |
| REV. | DESCRIPTION                                    | DATE       | BY  |

DIMENSIONS IN INCHES  
 STANDARD TOLERANCES (UNLESS OTHERWISE NOTED):  
 X = ±.1  
 .XX = ±.01  
 .XXX = ±.005  
 FRACTIONS = ±1/64  
 ANGLES = ±1°  
 DRAFTS: 3° MAX  
 PER ANSI Y14.5M GD&T-3/32 FLATNESS, ROUNDNESS, POSITION

**GA INDUSTRIES, LLC**  
 1/2" - 2 1/2" NPT ECO CENTRIC PLUG VALVE  
 w/ HAND LEVER  
 NON - AIS

|                                |                  |
|--------------------------------|------------------|
| SERIAL NO. *                   | DRAWN BY HGM     |
| FIG. NUMBER 517                | APPR. BY JT      |
| DATE 08-24-2009                | SCALE NTS        |
| PROPERTY OF GA INDUSTRIES, LLC |                  |
| REFERENCES                     | DRAWING NO. REV. |
| FILE PL                        | PL-1009 D        |