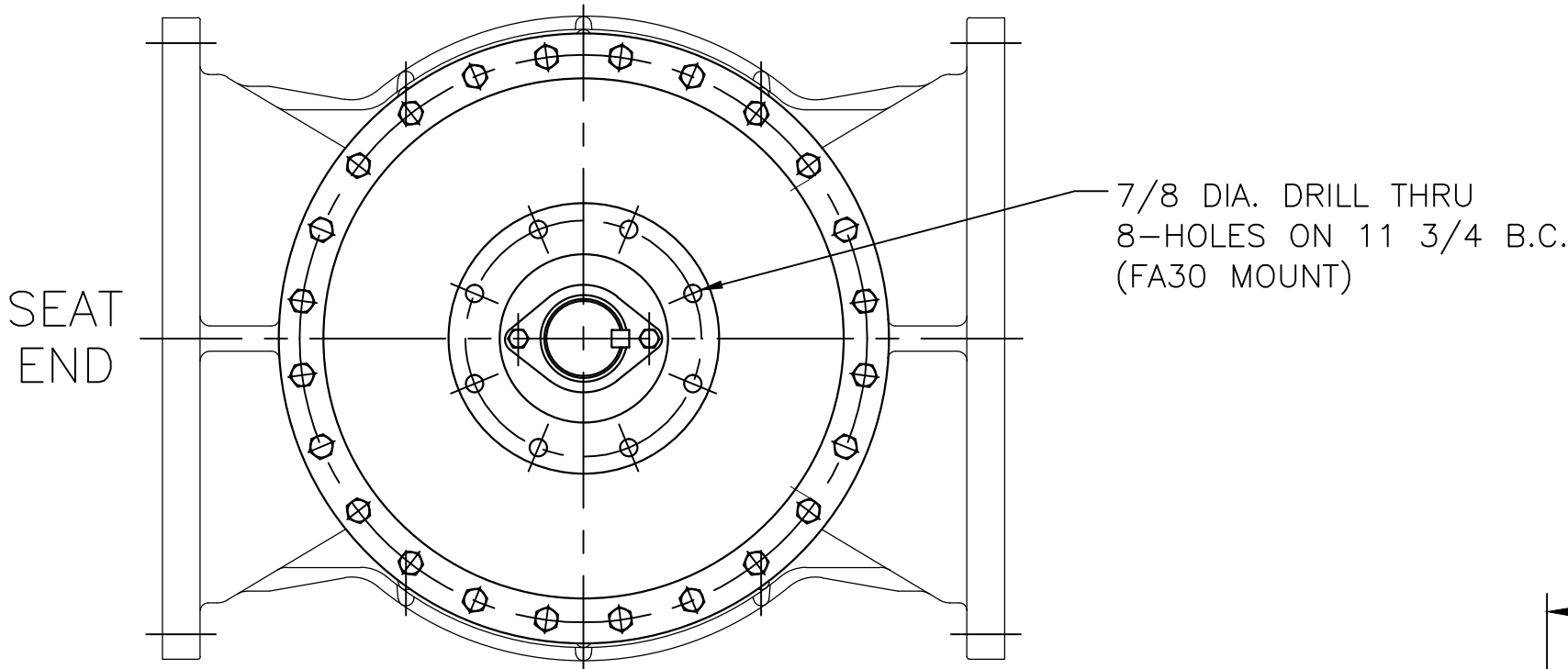
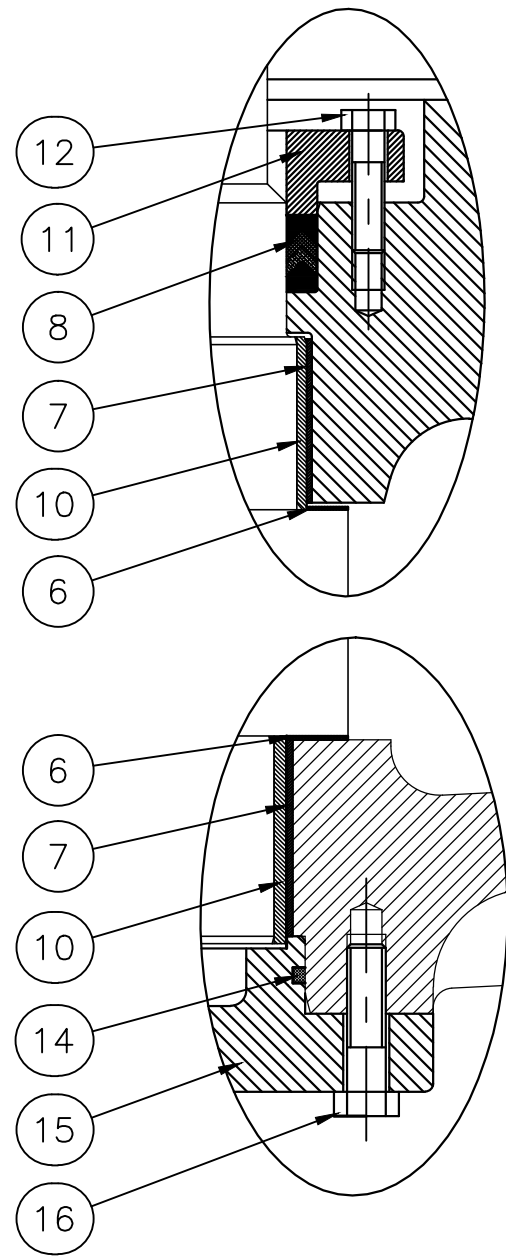
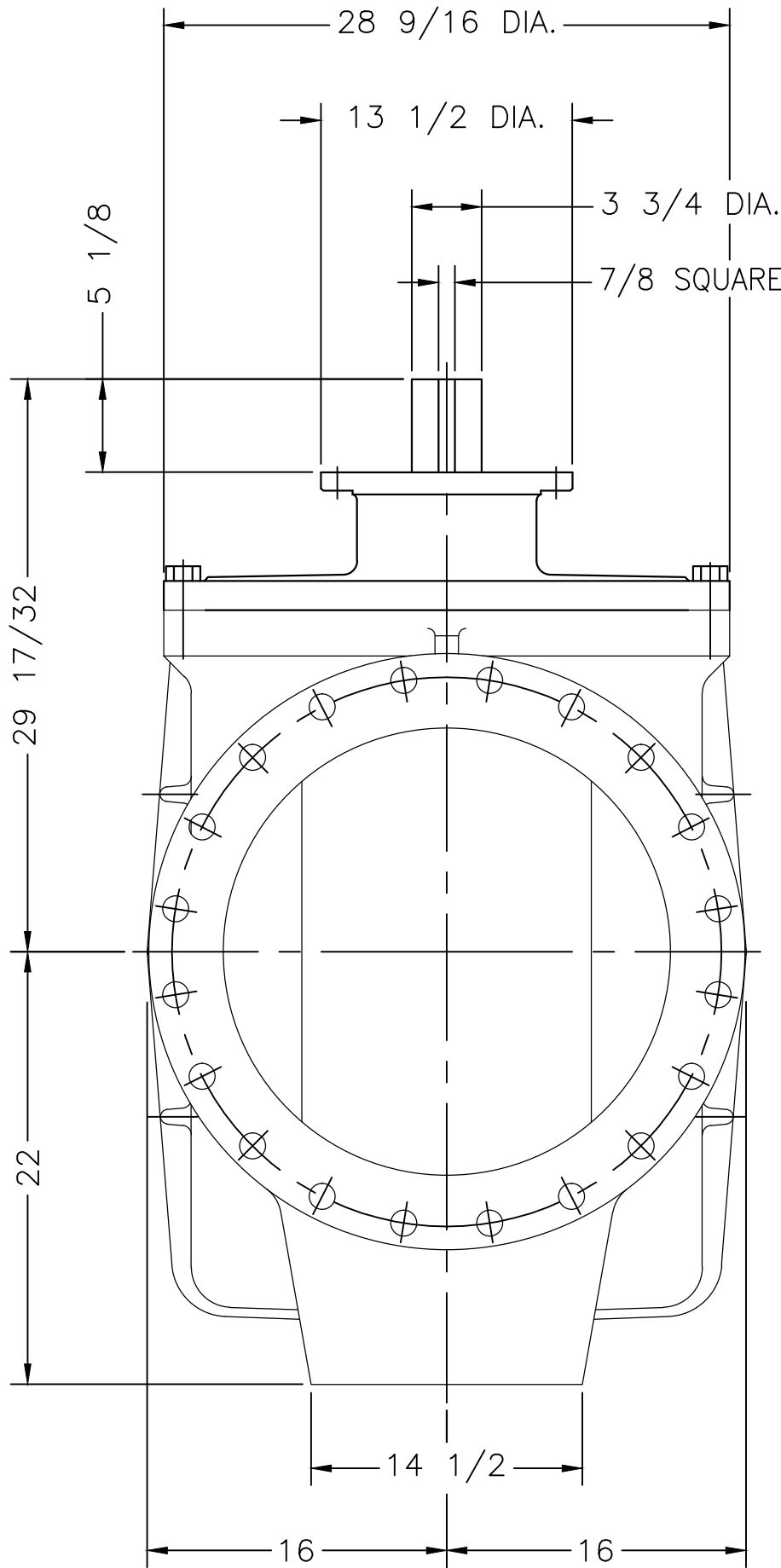
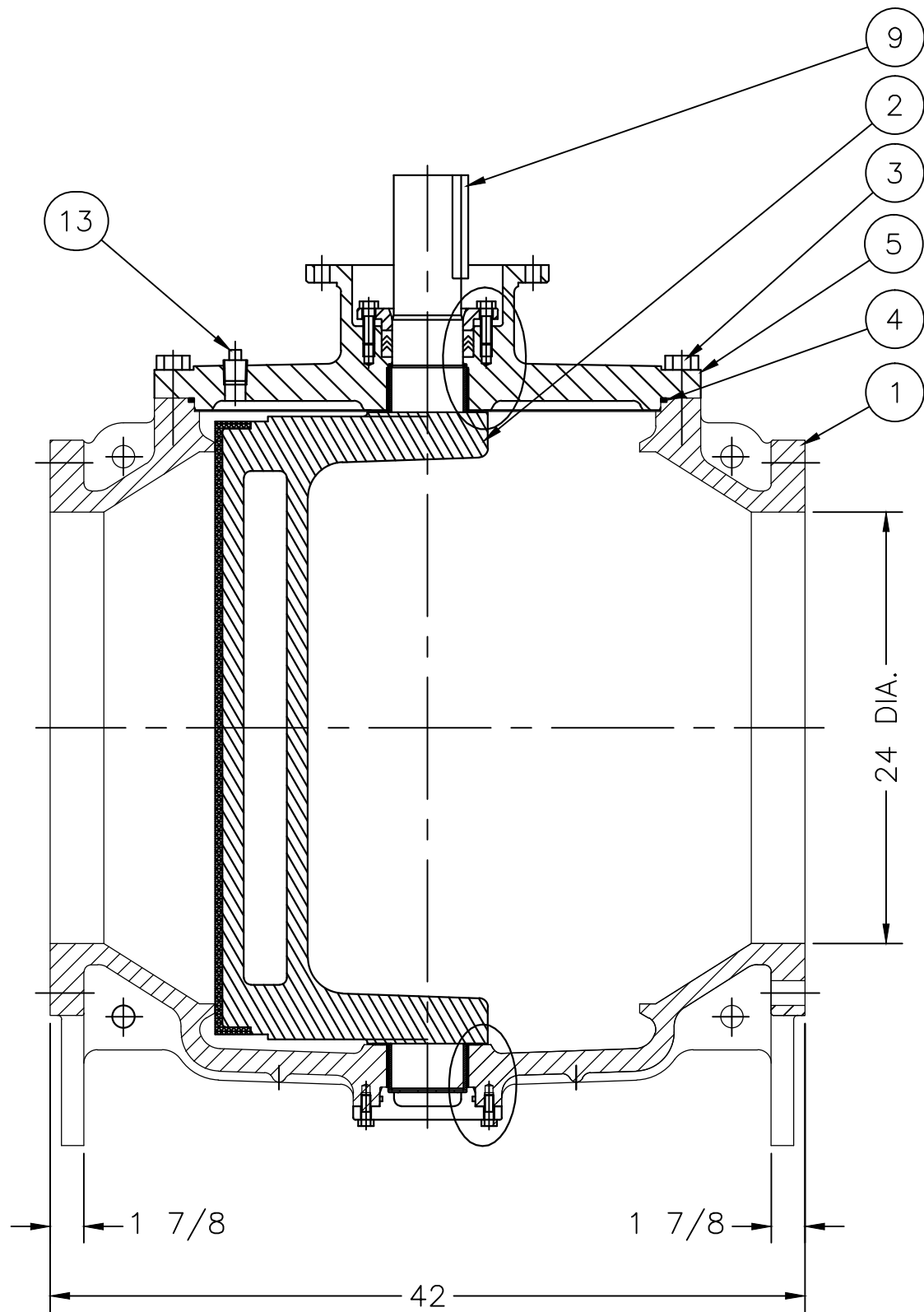


PARTS LIST	
ITEM NO.	DESCRIPTION
1	BODY
2	PLUG
3	COVER BOLTS
4	COVER O-RING
5	COVER
6	THRUST BEARING
7	BEARING
8	PACKING
9	KEY
10	PLUG BUSHING
11	PACKING GLAND
12	GLAND BOLTS
13	PIPE PLUG
14	END PLATE O-RING
15	END PLATE
16	END PLATE SCREWS




- NOTES:
1. FLANGE DRILLING PER ANSI B16.1 CLASS 125
 2. IN COMPLIANCE WITH AWWA C517
 3. COLD WORKING PRESSURE: 150 PSI
 4. HYDROSTATIC TEST PRESSURE: 225 PSI



J:\AUTOCAD\PLUG\PL-SHOW\PL-1076.DWG

REV.	DESCRIPTION	DATE	BY
*	*	*	*
*	*	*	*

GA INDUSTRIES, LLC		DIMENSIONS IN INCHES		SERIAL NO. *		DRAWN BY SWR					
24" ECO-CENTRIC PLUG VALVE ANSI 125 LB FLANGES		STANDARD TOLERANCES (UNLESS OTHERWISE NOTED)		CASTING STOCK MINIMUM (SMALLEST DIM. TO SURFACE)		FIG. NUMBER 517		APPR. BY *			
		X = ±.1		0 TO <1 = 1/8		DATE 06-07-2012		SCALE N.T.S.			
		.XX = ±.01 <CTQ>		1 TO <6 = 3/16		PROPERTY OF GA INDUSTRIES, LLC					
		.XXX = ±.005 <CTQ>		6 TO <12 = 1/4							
		FRACTIONS = ±1/64		12 AND > = 3/8							
ANGLES = ±1°				REFERENCES		FILE		DRAWING NO.		REV.	
DRAFTS: 3" MAX				* PL		PL-1076		*			
PER ANSI Y14.5M GD&T <3/32 FLATNESS, ROUNDNESS, POSITION											

DIMENSIONS IN INCHES	
STANDARD TOLERANCES (UNLESS OTHERWISE NOTED)	CASTING STOCK MINIMUM (SMALLEST DIM. TO SURFACE)
.X = ±.1	0 TO <1 = 1/8
.XX = ±.01 <CTQ>	1 TO <6 = 3/16
.XXX = ±.005 <CTQ>	6 TO <12 = 1/4
FRACTIONS = ±1/64	12 AND > = 3/8
ANGLES = ±1°	
DRAFTS: 3° MAX	
PER ANSI Y14.5M GD&T <332 FLATNESS, ROUNDNESS, POSITION	