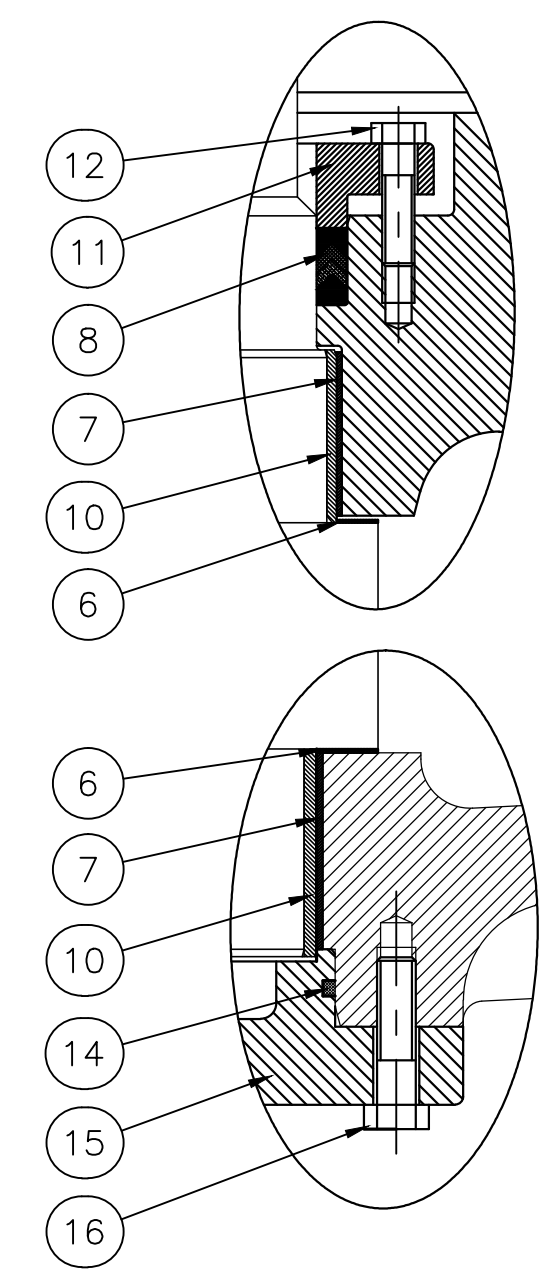
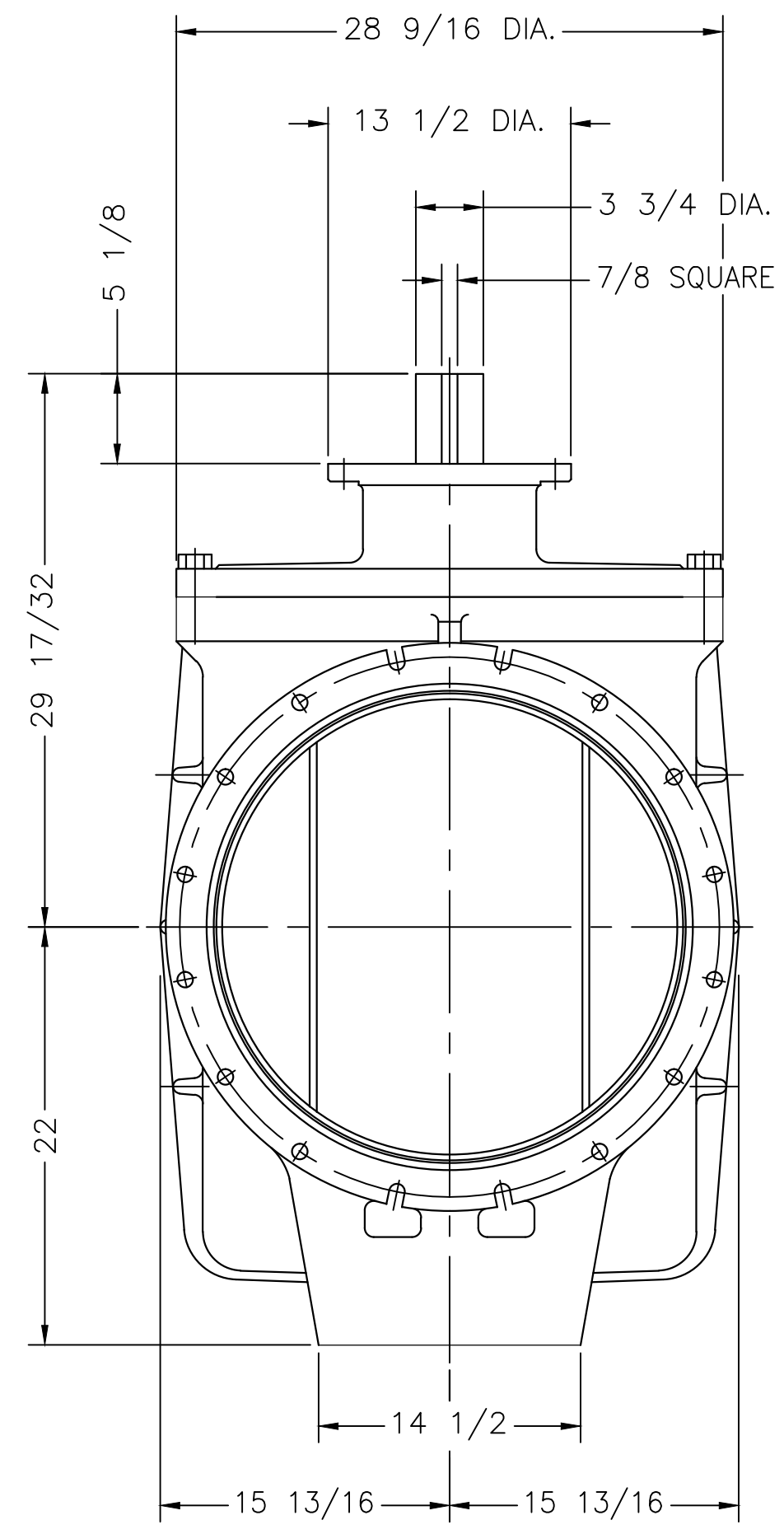
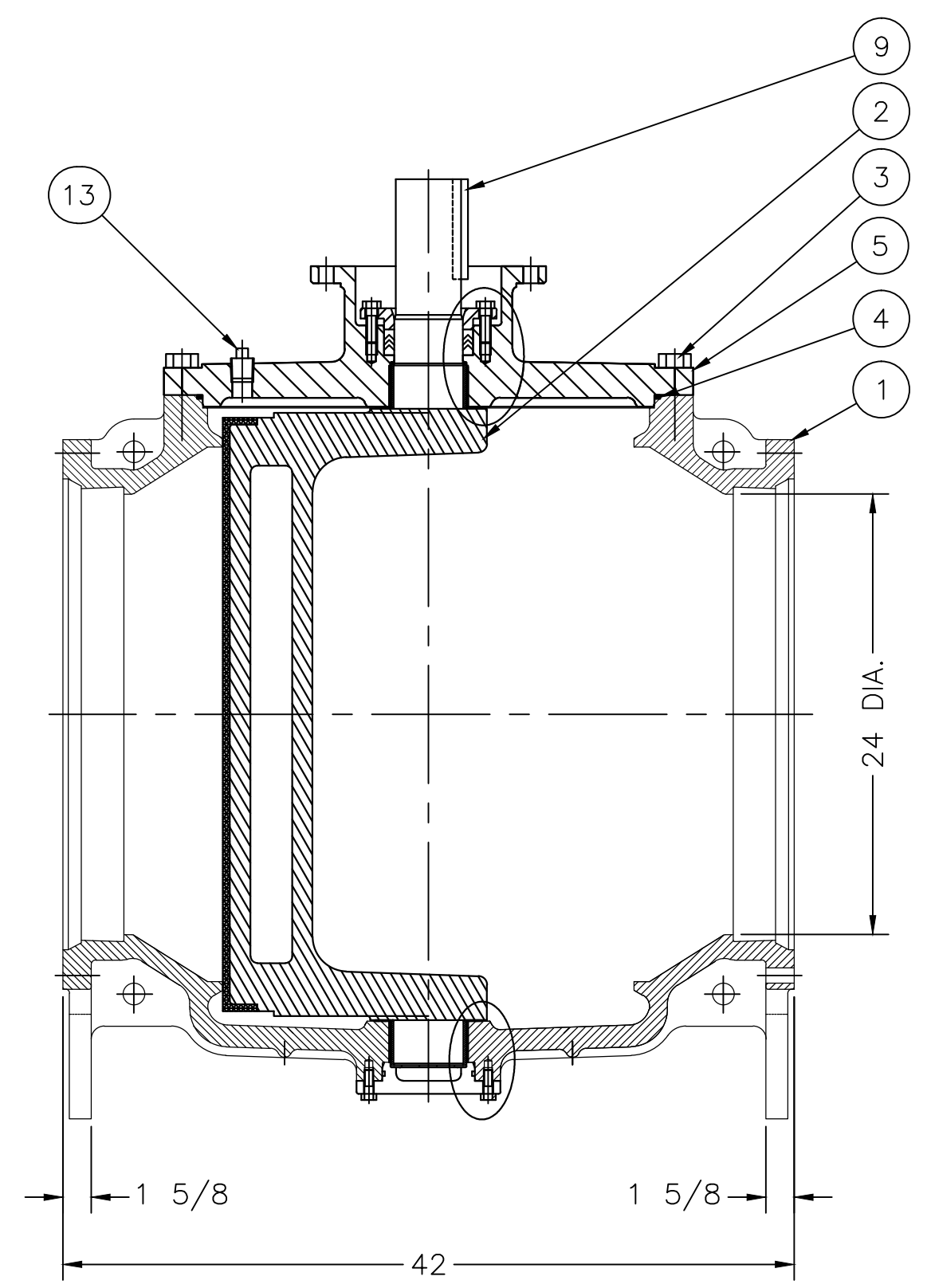
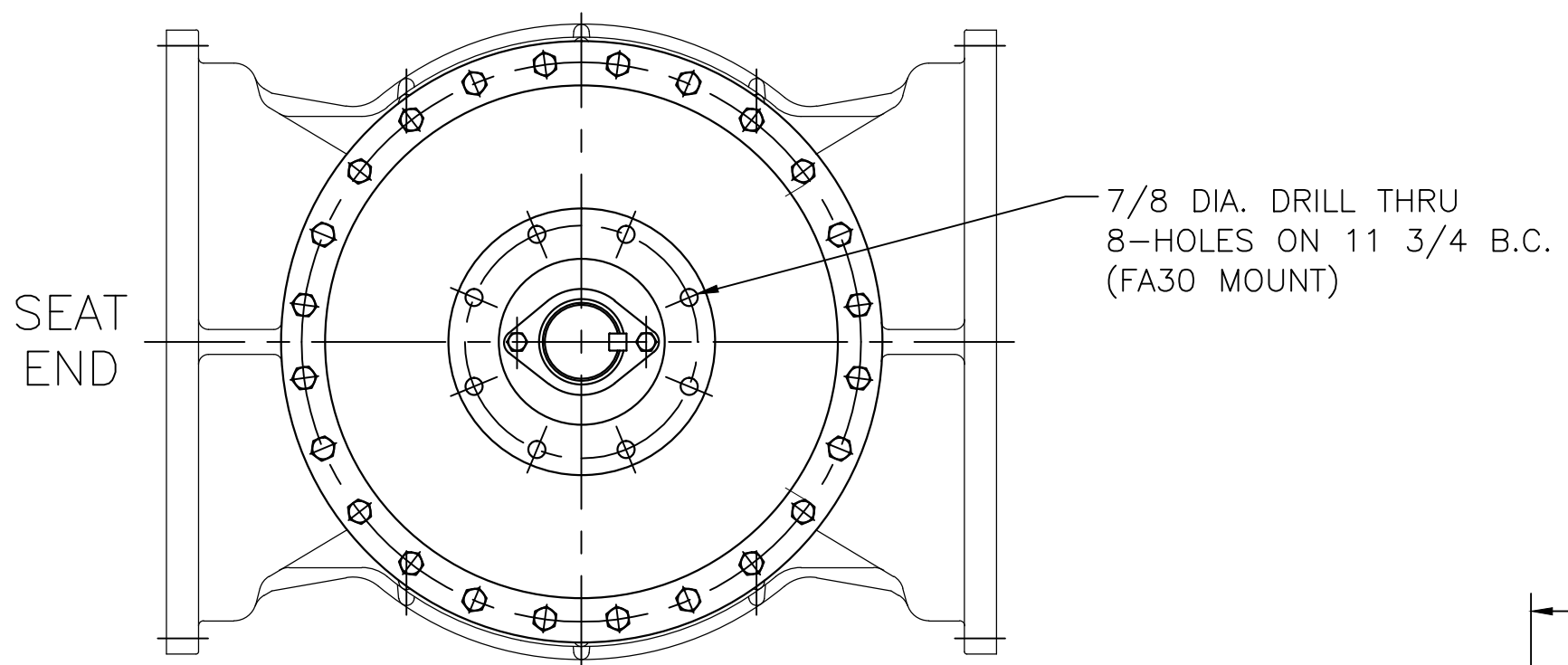


PARTS LIST	
ITEM NO.	DESCRIPTION
1	BODY
2	PLUG
3	COVER BOLTS
4	COVER O-RING
5	COVER
6	THRUST BEARING
7	BEARING
8	PACKING
9	KEY
10	PLUG BUSHING
11	PACKING GLAND
12	GLAND BOLTS
13	PIPE PLUG
14	END PLATE O-RING
15	END PLATE
16	END PLATE SCREWS

NOTES:
 1. FLANGE DRILLING PER ANSI A21.1 AWWA C111
 2. IN COMPLIANCE WITH AWWA C517
 3. COLD WORKING PRESSURE: 150 PSI
 4. HYDROSTATIC TEST PRESSURE: 225 PSI



REV.	DESCRIPTION	DATE	BY
* *			
* *			

GA INDUSTRIES, LLC
 24" ECO-CENTRIC PLUG VALVE
 MECHANICAL JOINT FLANGES

DIMENSIONS IN INCHES
 STANDARD TOLERANCES (UNLESS OTHERWISE NOTED)
 .X = ±.1
 .XX = ±.01 <CTQ>
 .XXX = ±.005 <CTQ>
 FRACTIONS = ±1/64
 ANGLES = ±1°
 DRAFTS: 3° MAX
 PER ANSI Y14.5M GD&T <332 FLATNESS, ROUNDNESS, POSITION

CASTING STOCK MINIMUM (SMALLEST DIM. TO SURFACE)
 0 TO <1 = 1/8
 1 TO <6 = 3/16
 6 TO <12 = 1/4
 12 AND > = 3/8

SERIAL NO. *	DRAWN BY SWR
FIG. NUMBER 517	APPR. BY *
DATE 06-14-2012	SCALE N.T.S.
PROPERTY OF GA INDUSTRIES, LLC	
REFERENCES	DRAWING NO. PL-1078
FILE PL	REV. *

J:\AUTOCAD\PLUG\PL-SHOW\PL-1078.DWG