

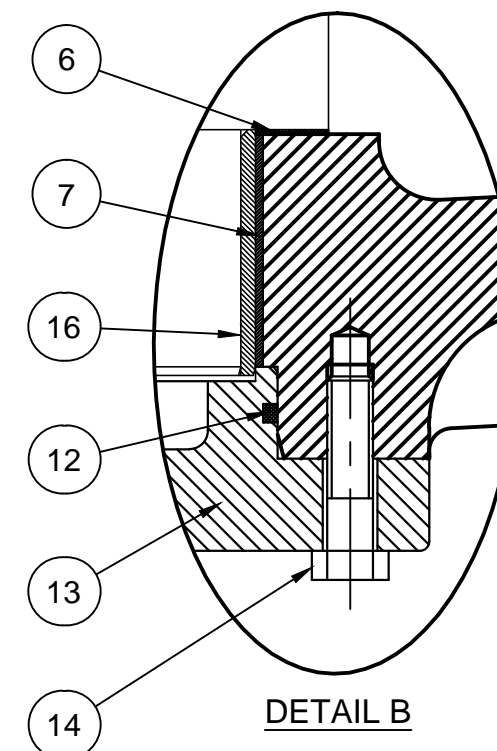
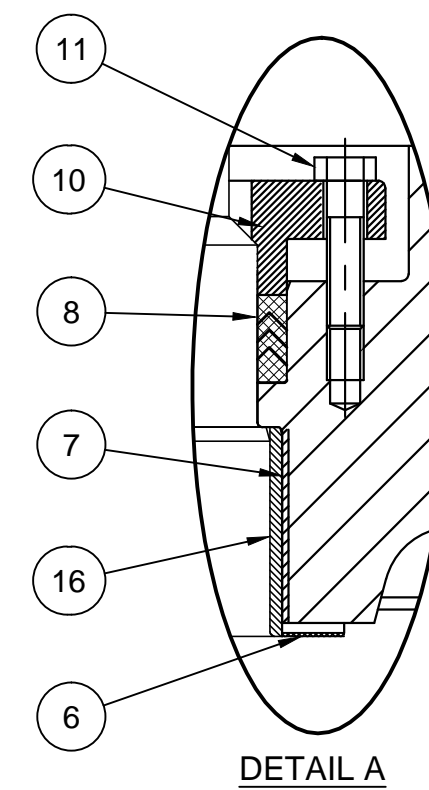
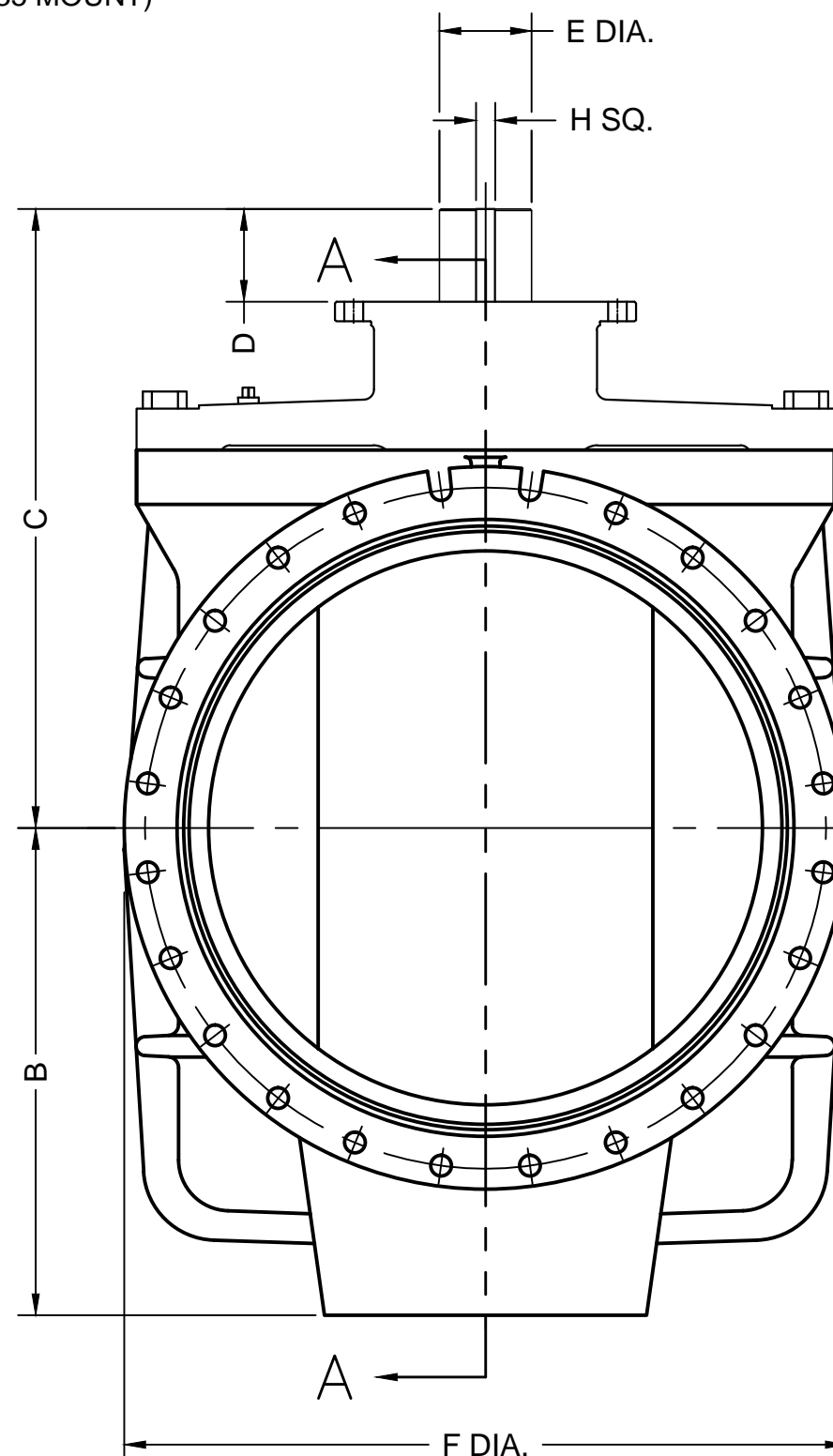
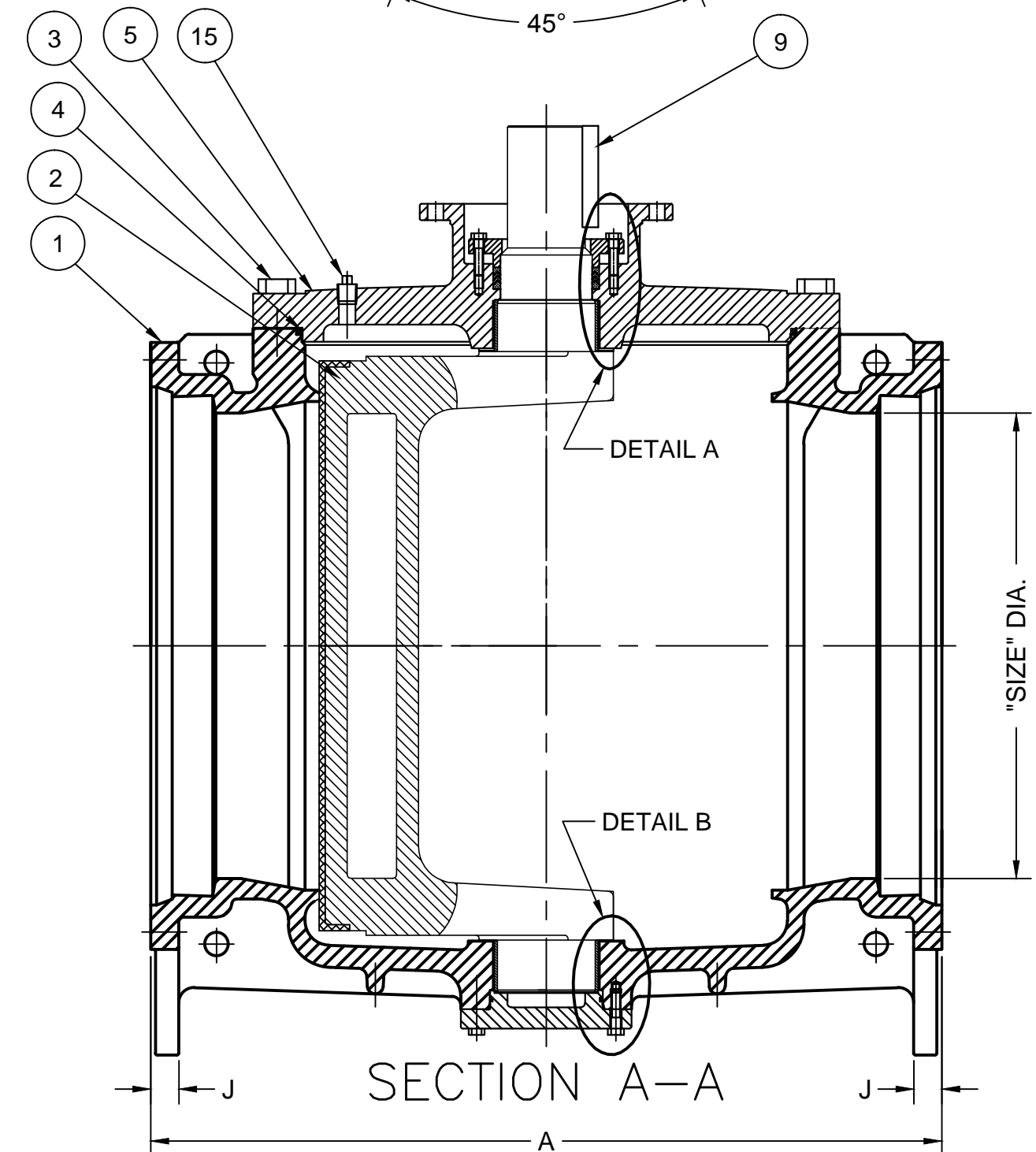
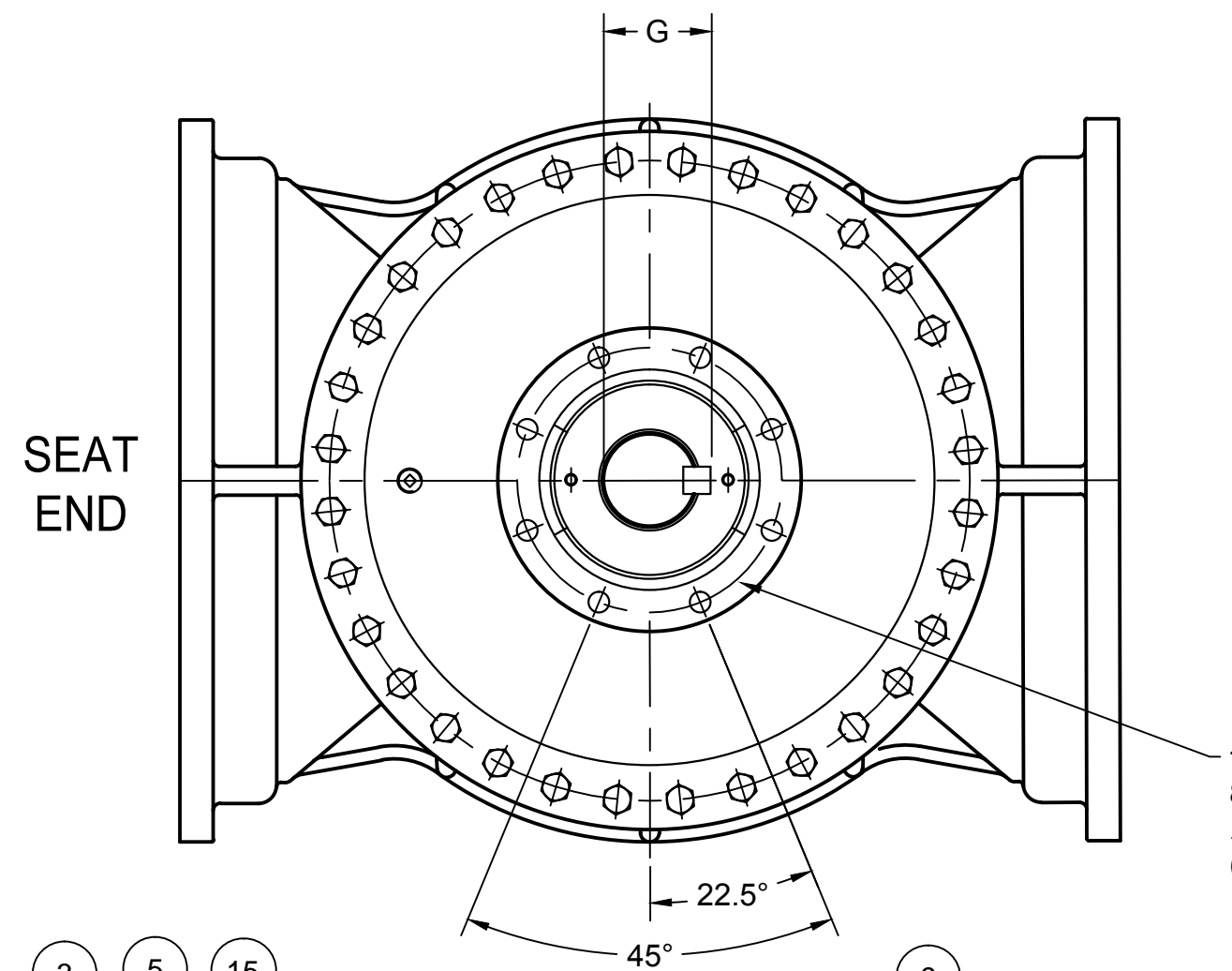
VALVE DIMENSIONS

SIZE	A		B		C		D		E DIA		F DIA		G		H SQ.		J	
	IN.	MM	IN.	MM	IN.	MM	IN.	MM	IN.	MM	IN.	MM	IN.	MM	IN.	MM	IN.	MM
30"	51.00	1295	26.40	671	34.93	887	6.38	162	5.00	127	39.15	994	5.54	141	1.25	32	1.81	46
36"	60.00	1524	26.80	681	37.68	957	6.69	170	5.00	127	46.00	1168	5.54	141	1.25	32	2.00	51

PARTS LIST

ITEM NO.	DESCRIPTION
1	BODY
2	PLUG
3	COVER BOLTS
4	COVER O-RING
5	COVER
6	THRUST BEARING
7	BEARING
8	PACKING
9	KEY
10	RETAINING RING
11	RETAINING BOLTS
12	END PLATE O-RING
13	END PLATE
14	END PLATE SCREWS
15	PIPE PLUG
16	PLUG BUSHING

- NOTES:  
 1. FLANGE DRILLING PER ANSI A21.1 AWWA C111  
 2. IN COMPLIANCE WITH AWWA C517  
 3. COLD WORKING PRESSURE: 150 PSI  
 4. HYDROSTATIC TEST PRESSURE: 225 PSI



**GA INDUSTRIES, LLC**  
 30" - 36" ECO-CENTRIC PLUG VALVE  
 MECHANICAL JOINT FLANGES

DIMENSIONS IN INCHES  
 STANDARD TOLERANCES (UNLESS OTHERWISE NOTED):  
 X = ±1  
 XXX = ±0.1 <CTD>  
 XXXX = ±0.05 <CTD>  
 FRACTIONS = ±1/64  
 ANGLES = ±1°  
 DRAFTS: 3° MAX  
 PER ANSI Y14.5M GD&T -302 FLATNESS, ROUNDNESS, POSITION

BREAK SHARP EDGES  
 SERIAL NO. \*  
 FIG. NUMBER 517  
 DATE 10-16-2009  
 REFERENCES \*  
 DRAWN BY HGM  
 APPR. BY JT  
 SCALE NTS  
 PROPERTY OF GA INDUSTRIES, LLC  
 FILE PL  
 DRAWING NO. PL-1020  
 REV. B

REV.	DESCRIPTION	DATE	BY
B	COVER DESIGN CHANGE	02-28-2013	BRF
A	ITEM 10 & 11 WERE REVISED	02-11-2011	HGM

T:\Autocad\Plug\PL-Show\PL-1020-B.dwg