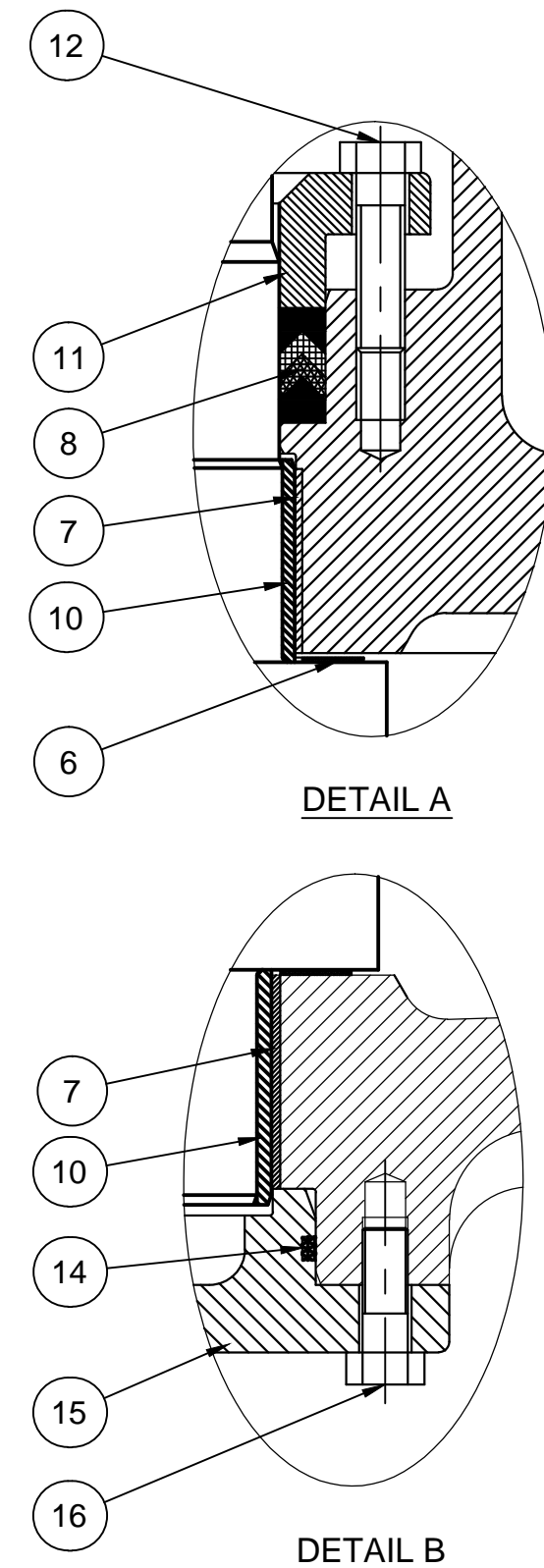
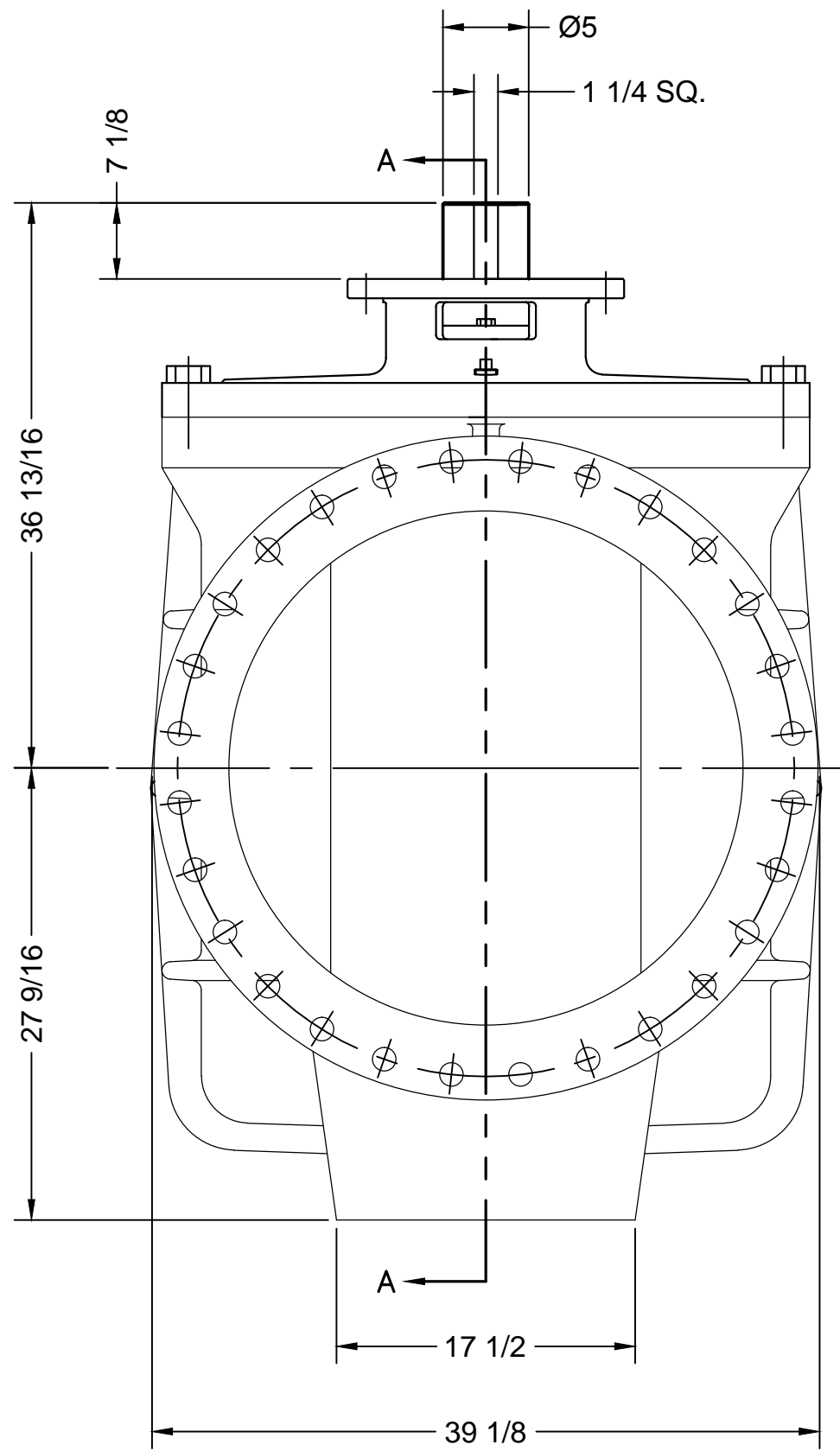
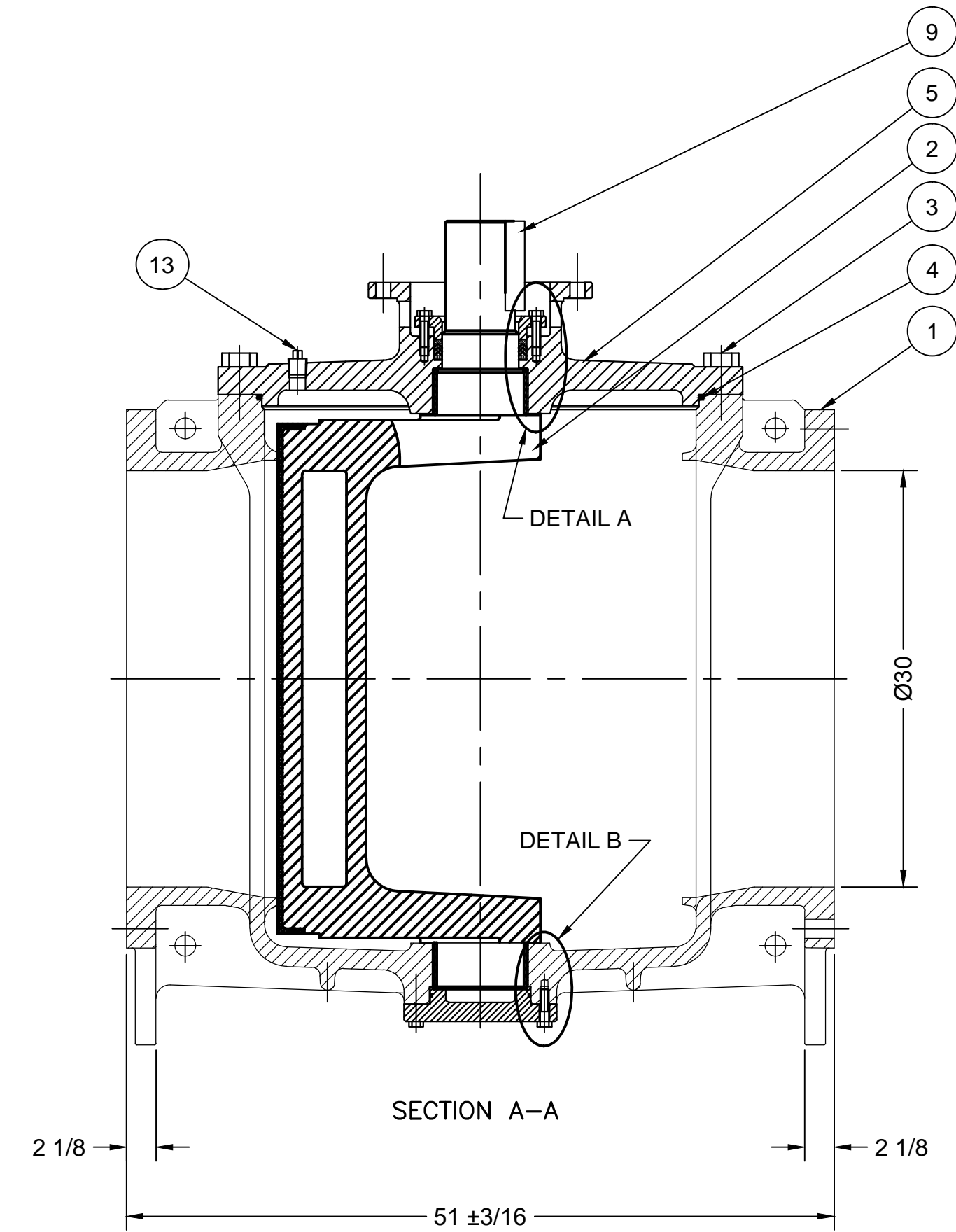


Ø1 1/8 DRILL THRU
8-HOLES ON Ø14 B.C.
EQ. SP. & STR. €
(FOR FA35 MOUNT)

- NOTES:
1. FLANGE DRILLING PER ANSI B16.1 CLASS 125
2. IN COMPLIANCE WITH AWWA C517
3. COLD WORKING PRESSURE: 150 PSI
4. HYDROSTATIC TEST PRESSURE: 225 PSI

PARTS LIST	
ITEM NO.	DESCRIPTION
1	BODY
2	PLUG
3	COVER BOLTS
4	COVER O-RING
5	COVER
6	THRUST BEARING
7	BEARING
8	PACKING
9	KEY
10	PLUG BUSHING
11	PACKING GLAND
12	GLAND BOLTS
13	PIPE PLUG
14	END PLATE O-RING
15	END PLATE
16	END PLATE BOLTS



DIMENSIONS IN INCHES
STANDARD TOLERANCES
(UNLESS OTHERWISE NOTED)
X = ±.1
XX = ±.01
XXX = ±.005
FRACTIONS = ±1/64
ANGLES = ±1°
DRAFTS: 3° MAX
PER ANSI Y14.5M GD&T ©3/2 FLATNESS, ROUNDNESS, POSITION

GA INDUSTRIES, LLC
30" 100% RECTANGULAR PORT
ECO-CENTRIC PLUG VALVE
ANSI 125 FLANGE

SERIAL NO. *	DRAWN BY SWR
FIG. NUMBER 517	APPR. BY JT
DATE 10-05-2016	SCALE N.T.S.
PROPERTY OF GA INDUSTRIES, LLC	
REFERENCES	FILE
	PL
DRAWING NO. PL-1139	REV. *

O:\PROJECTS\ENGINEERING\AUTOCAD\PLUG\PL-SHOW\PL-1139.DWG

REV.	DESCRIPTION	DATE	BY