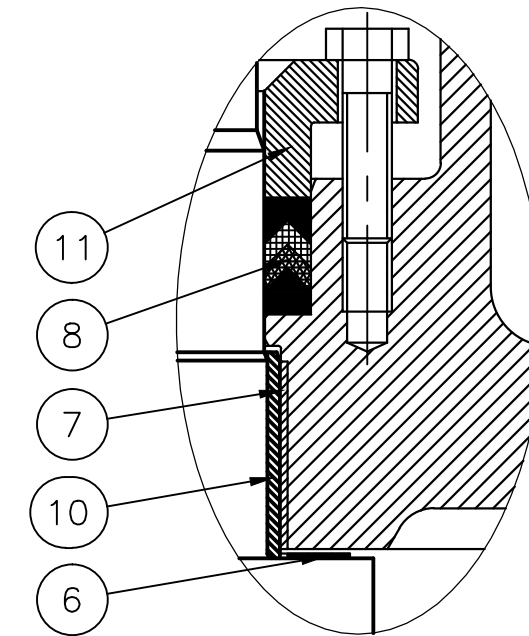
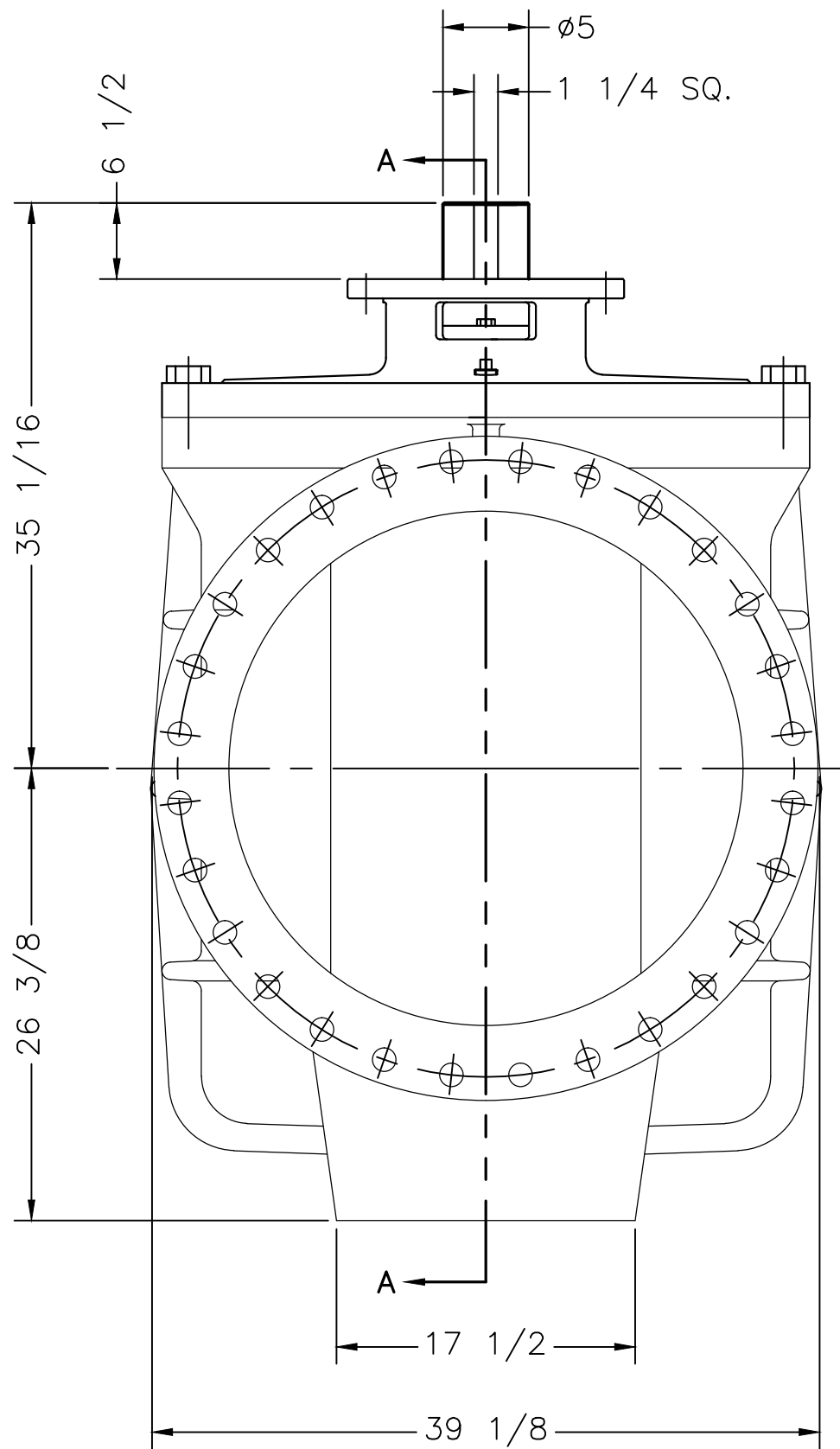
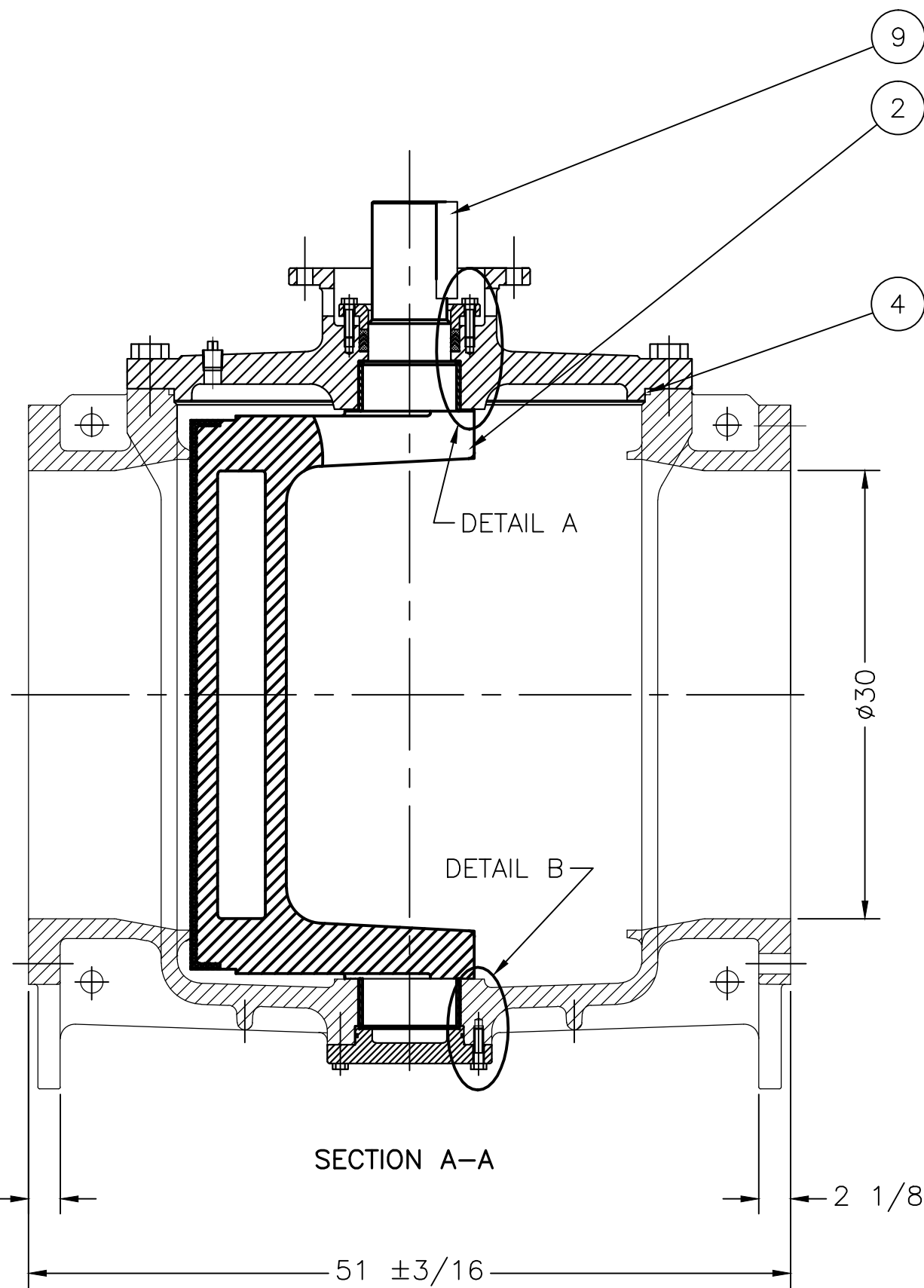


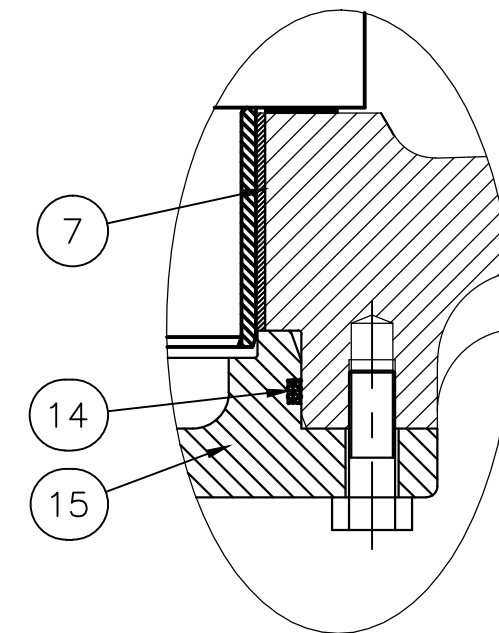
- NOTES:
 1. FLANGE DRILLING PER ANSI B16.1 CLASS 125
 2. IN COMPLIANCE WITH AWWA C517
 3. COLD WORKING PRESSURE: 150 PSI
 4. HYDROSTATIC TEST PRESSURE: 225 PSI

Ø1 1/8 DRILL THRU
 8-HOLES ON Ø14 B.C.
 EQ. SP. & STR. \perp
 (FOR FA35 MOUNT)

| PARTS LIST | |
|------------|------------------|
| ITEM NO. | DESCRIPTION |
| 1 | BODY |
| 2 | PLUG |
| 3 | COVER BOLTS |
| 4 | COVER O-RING |
| 5 | COVER |
| 6 | THRUST BEARING |
| 7 | BEARING |
| 8 | PACKING |
| 9 | KEY |
| 10 | PLUG BUSHING |
| 11 | RETAINING RING |
| 12 | RETAINING BOLTS |
| 13 | PIPE PLUG |
| 14 | END PLATE O-RING |
| 15 | END PLATE |
| 16 | END PLATE SCREWS |



DETAIL A



DETAIL B

| | | | | | |
|---|-------------------|-------------------------------------|---------------------|--------------------|-------------|
| GA INDUSTRIES, LLC | | | | | |
| 30" ECO-CENTRIC PLUG VALVE - FLANGED ANSI 125 LB FLANGES | | | | | |
| STANDARD TOLERANCES (UNLESS OTHERWISE NOTED) FINISHED SURFACES ONLY DIMENSIONS SHOWN IN INCHES .x = ±.02 .xx = ±.01 .xxx = ±.002 FRACTIONS ±1/64" ANGLES ±1° FINISH $\sqrt{\text{XX}}$ RMS | SERIAL NO. | SCALE | DRAWN BY HGM | | |
| | * | N.T.S. | APPR. BY JT | | |
| | REFERENCES | EFFECTIVE DATE 08-31-2009 TO | | FIG. NUMBER | REV. |
| | * | | | 517 | B |
| | | FILE | DRAWING NO. | | |
| | | PL | PL-1016 | | |

J:\AUTOCAD\PLUG\PL-SHOW\PL-1016-B.DWG

| REV. | DESCRIPTION | DATE | BY |
|------|---------------------------|------------|-----|
| B | DESIGN CHANGE OF COVER | 12-03-2012 | RJT |
| A | ITEM 11 & 12 WERE REVISED | 02-11-2011 | HGM |