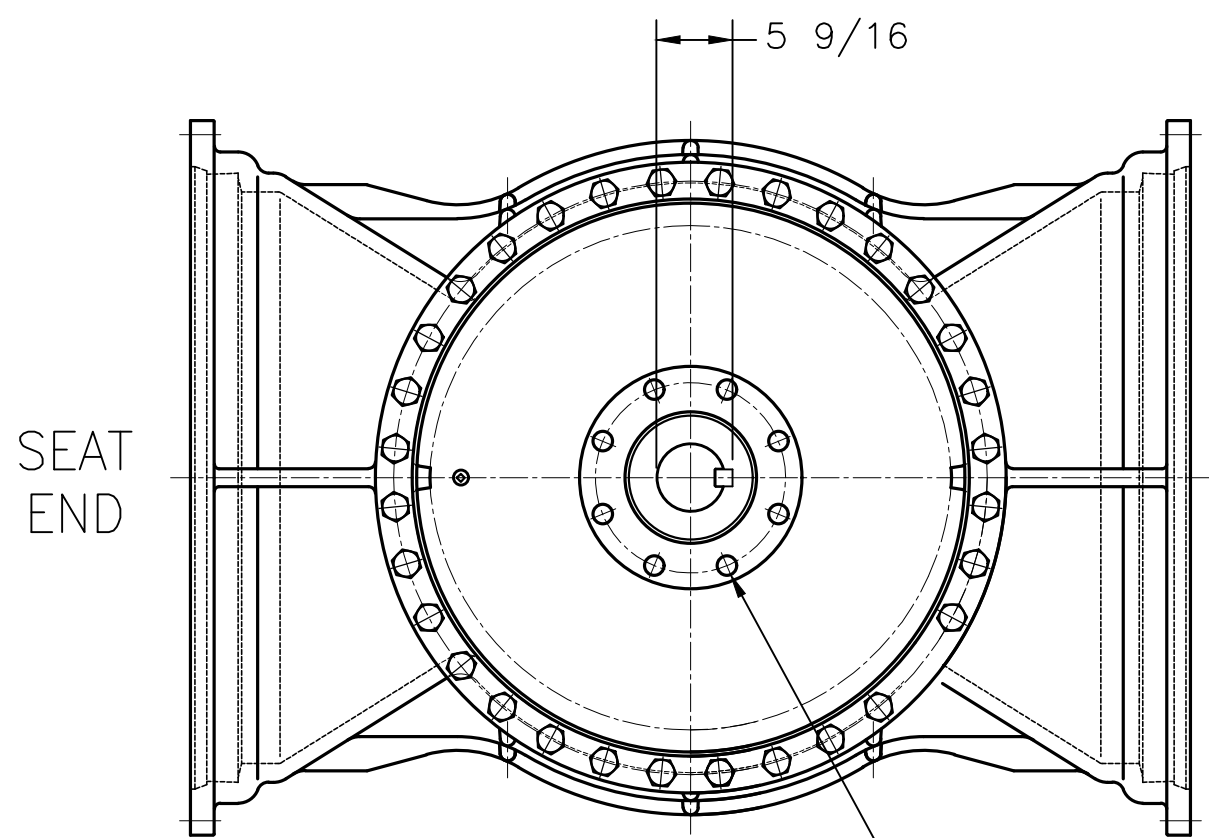
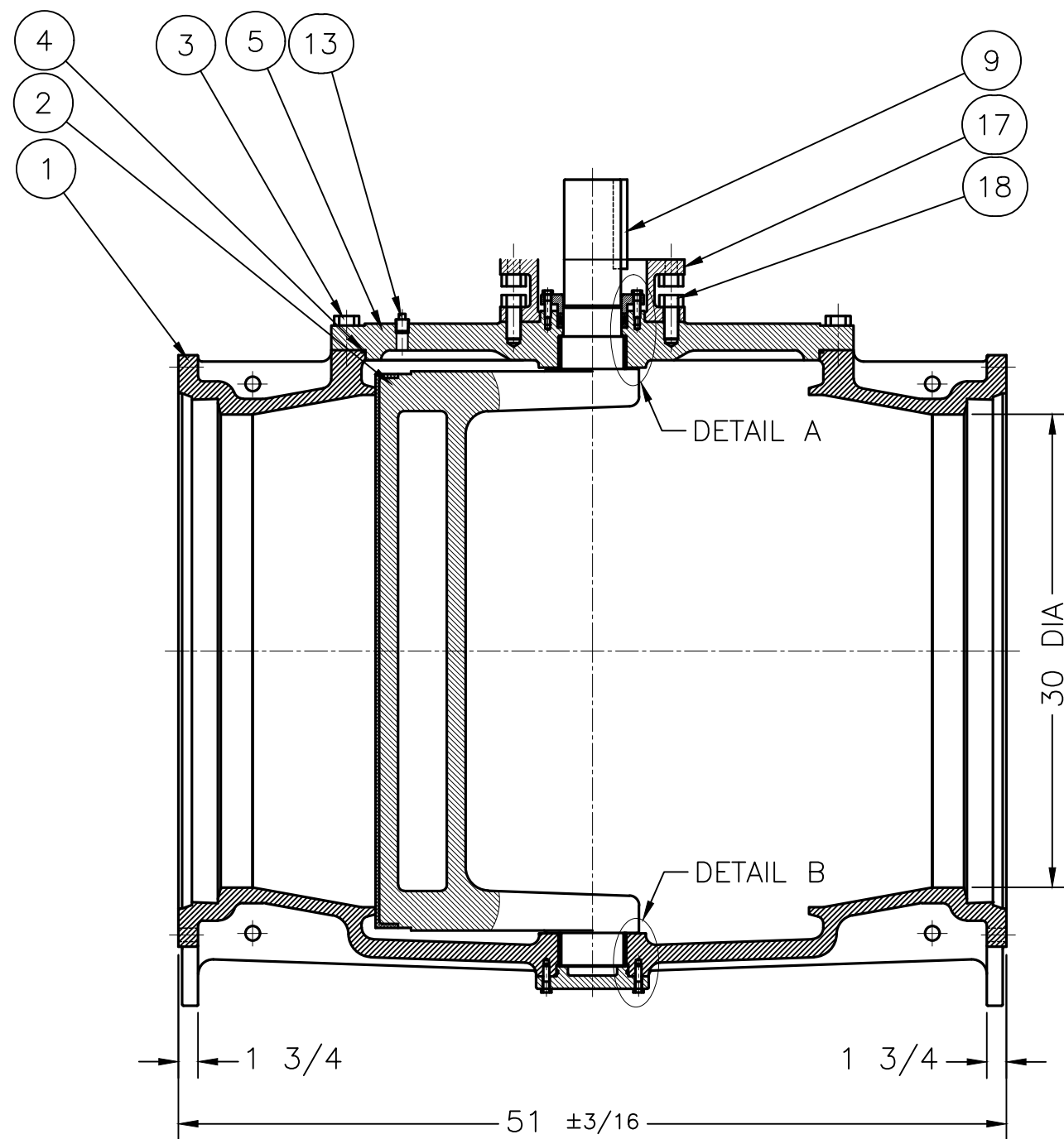


PARTS LIST	
ITEM NO.	DESCRIPTION
1	BODY
2	PLUG
3	COVER BOLTS
4	COVER O-RING
5	COVER
6	THRUST BEARING
7	BEARING
8	PACKING
9	KEY
10	PLUG BUSHING
11	RETAINING RING
12	RETAINING BOLTS
13	PIPE PLUG
14	END PLATE O-RING
15	END PLATE
16	END PLATE SCREWS
17	COVER MOUNTING FLANGE
18	COVER MTG. FLG. SCREWS

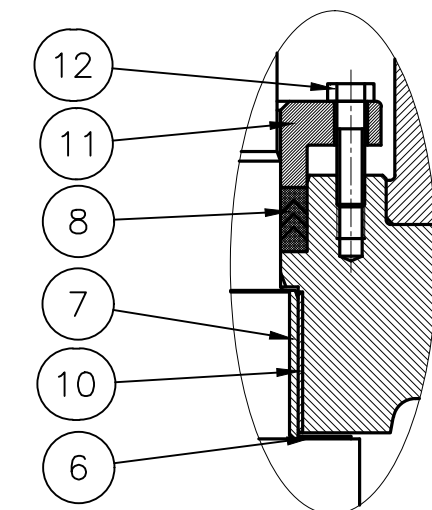
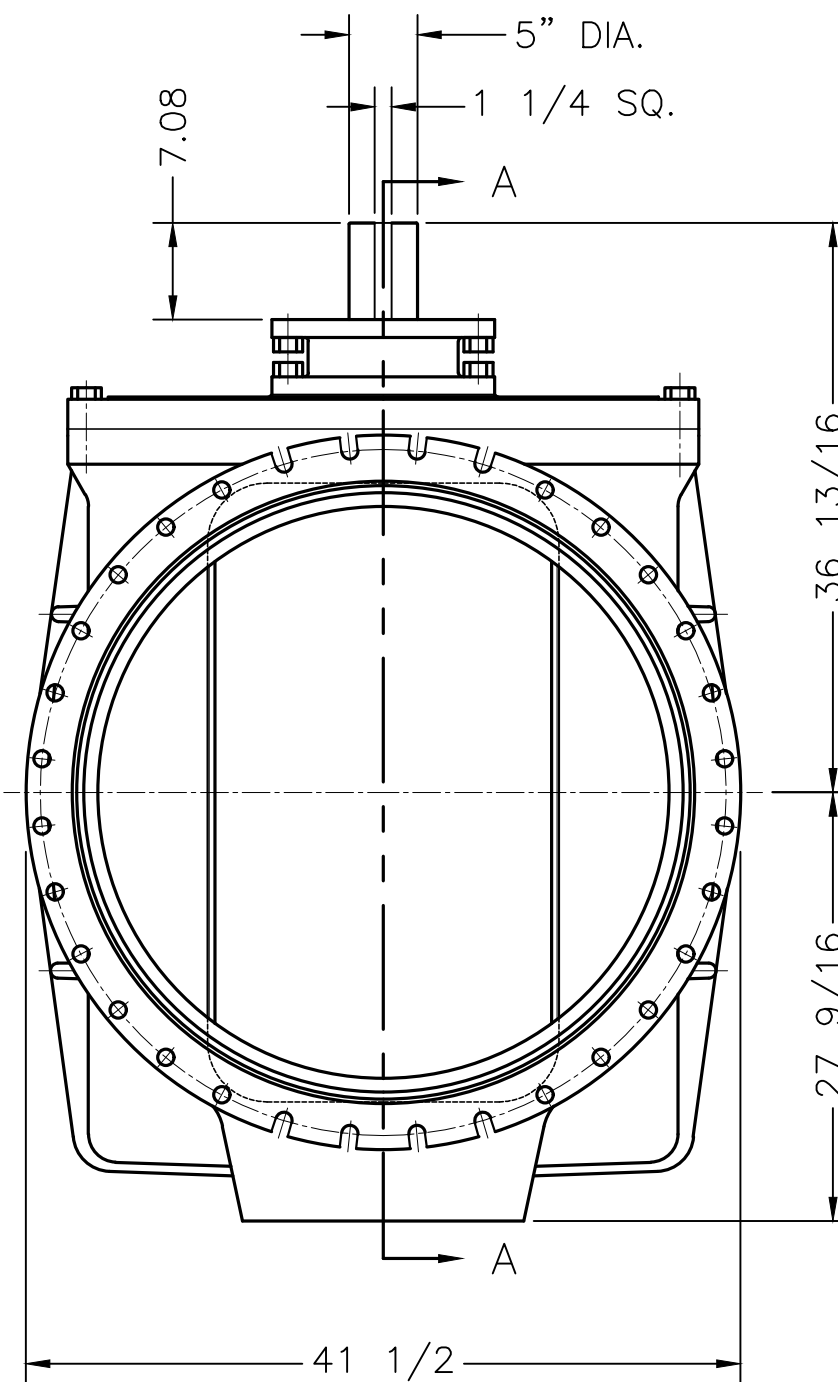


NOTES:
 1. FLANGE DRILLING PER ANSI A21.1 AWWA C111
 2. IN COMPLIANCE WITH AWWA C517
 3. COLD WORKING PRESSURE: 150 PSI
 4. HYDROSTATIC TEST PRESSURE: 225 PSI

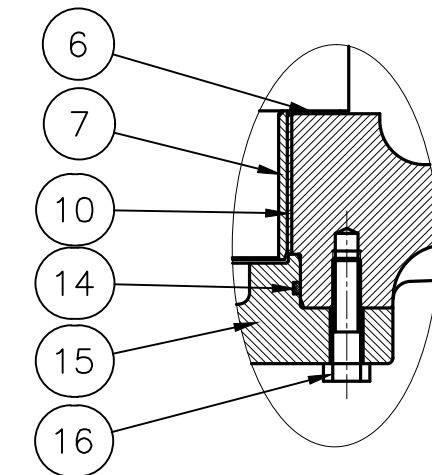
(1) - 1" DIA. THRU HOLE
 (7) - 1 1/8 DIA. THRU HOLES
 ON 14 DIA. BOLT CIRCLE & STR. ⚡
 (DRILLED FOR FA35 MOUNT)



SECTION A-A



DETAIL A



DETAIL B

GA INDUSTRIES, LLC

30" ECO-CENTRIC PLUG VALVE
 MECHANICAL JOINT FLANGES (100% PORT)

DIMENSIONS IN INCHES
 STANDARD TOLERANCES (UNLESS OTHERWISE NOTED)
 .X = ±.1
 .XX = ±.02
 .XXX = ±.005
 FRACTIONS = ±1/64
 ANGLES = ±1°
 DRAFTS: 3° MAX
 PER ANSI Y14.5M GD&T <3/32 FLATNESS, ROUNDNESS, POSITION

SERIAL NO. *
 FIG. NO. 517
 DATE 04-14-2020
 PROPERTY OF GA INDUSTRIES, LLC
 DRAWN BY SWR
 APPR. BY JT
 SCALE N.T.S.
 REFERENCES *
 FILE PL
 DRAWING NO. PL-1159
 REV.

O:\AUTOCAD\PLUG\PL-SHOW\PL-1159.DWG

REV.	DESCRIPTION	DATE	BY
* * *			