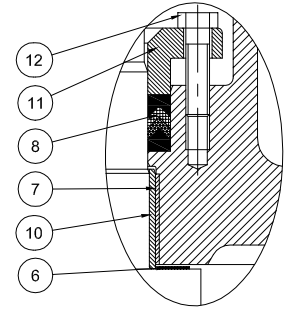
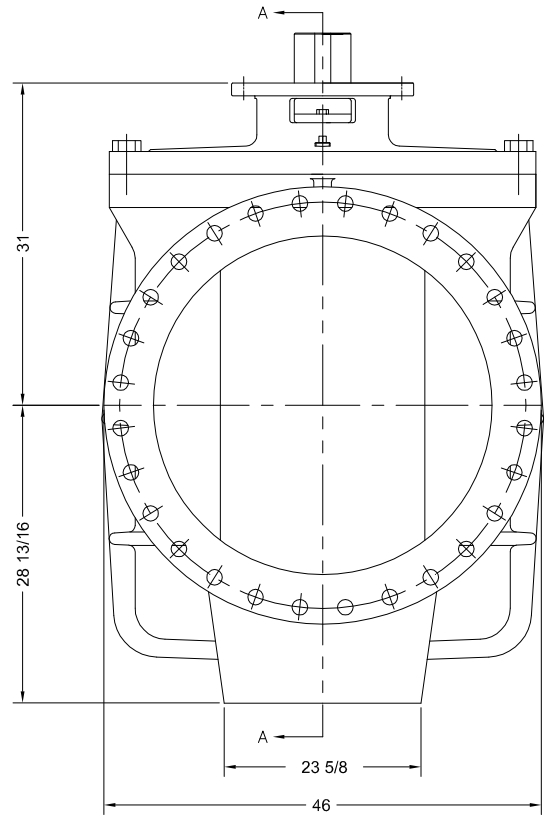
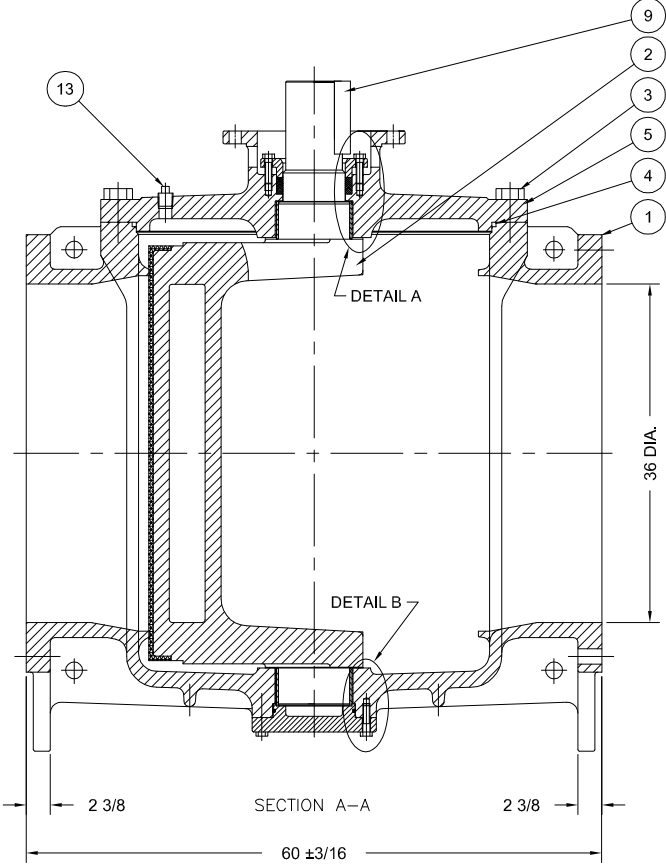


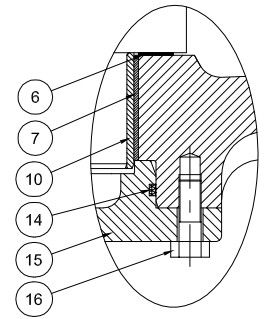
SEAT
END

- NOTES:
 1. FLANGE DRILLING PER ANSI B16.1 CLASS 125
 2. IN COMPLIANCE WITH AWWA C517
 3. COLD WORKING PRESSURE: 150 PSI
 4. HYDROSTATIC TEST PRESSURE: 225 PSI

PARTS LIST	
NO.	DESCRIPTION
1	BODY
2	PLUG
3	COVER BOLTS
4	COVER O-RING
5	COVER
6	THRUST BEARING
7	BEARING
8	PACKING
9	KEY
10	PLUG BUSHING
11	RETAINING RING
12	RETAINING BOLTS
13	PIPE PLUG
14	END PLATE O-RING
15	END PLATE
16	END PLATE SCREWS



DETAIL A



DETAIL B

DIMENSIONS IN INCHES
 STANDARD TOLERANCES UNLESS OTHERWISE NOTED
 CASTING STOCK FINISH FOR HUNGARY SURFACES
 J19 ±.1 110 ±1 F18
 J21 ±.01 110 ±.5 F18
 J22 ±.005 12.480 ±.018
 FINISHES # A104
 ANKLES # 41
 DRAFTS: 3" MAX
 PER AWWA C500 C502 FLANGES REQUIRE 30° TAPER

GA INDUSTRIES, LLC
 36" ECO-CENTRIC PLUG VALVE
 ANSI 125 LB FLANGES

SERIAL NO.	DRAWN BY
FIG. NUMBER	APPR. BY
DATE	SCALE
REFERENCES	PROPERTY OF GA INDUSTRIES, LLC
FILE	DRAWING NO.
PL	PL-1017C
REV.	

REV.	DESCRIPTION	DATE	BY

C:\Projects\Engineering\Autocad\Plug PL-1017C.dwg