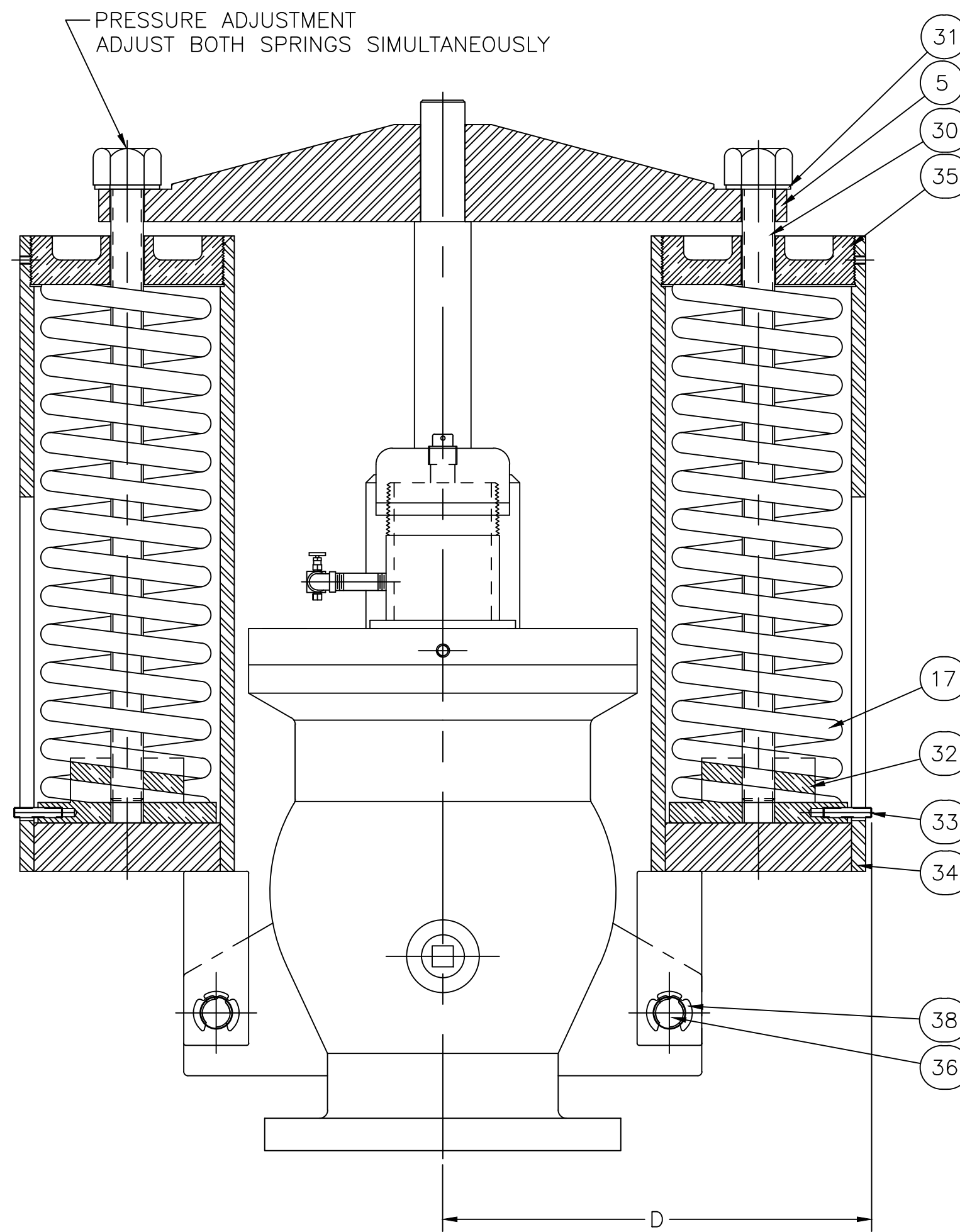
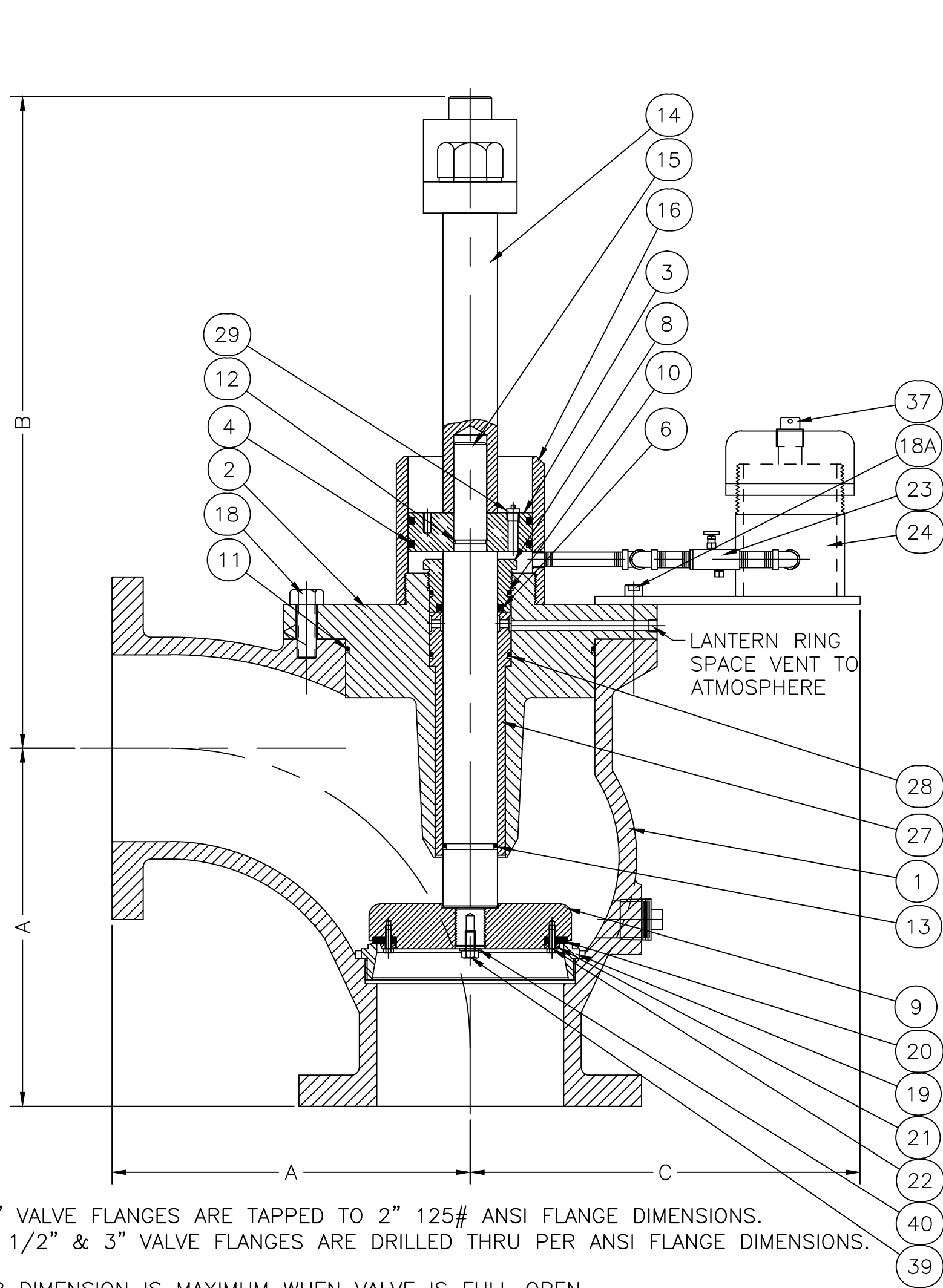


REV.	DESCRIPTION	DATE	BY
A	REDRAWN IN CADKEY	09-29-1995	
B	PART 38 WAS COTTER PINS, OMITTED PART 38A CLEVIS PIN WASHER, HGM, 6-6-2006	06-06-2006	HGM
C	REDRAWN IN AUTOCAD, PART 18A WAS PART 42	05-12-2011	RJT



NO.	PART NAMES
1	BODY
2	COVER
3	PISTON
4	PISTON SEAL
5	SPRING YOKE
6	GLAND PACKING
8	GLAND
9	DISC
10	GLAND SEAL
11	COVER SEAL
12	PISTON ROD SEAL
13	DISC SEAL
14	PISTON ROD
15	DISC STEM
16	CYLINDER
17	SPRING
18	COVER BOLTS
18A	OIL RESERVOIR MOUNTING BOLT
19	SEAT
20	SEAT RING
21	SEAT RING FOLLOWER
22	SEAT RING FOLLOWER SCREWS
23	FLOW CONTROL VALVE
24	OIL RESERVOIR
27	BUSHING
28	BUSHING SEAL
29	PISTON VENT PLUG
30	SPRING ADJUSTING SCREW ASSEMBLY
31	ADJUSTING SCREW WASHER
32	SPRING ADJUSTING WASHER
33	SPRING ADJUSTING WASHER PIN
34	SPRING CHAMBERS
35	SPRING RETAINER CAP
36	CLEVIS PINS
37	AIR VENT PLUG
38	CLEVIS PIN RETAINING RING
39	DISC STEM LOCKING SCREW
40	DISC STEM LOCKING WASHER

2" VALVE FLANGES ARE TAPPED TO 2" 125# ANSI FLANGE DIMENSIONS.
 2 1/2" & 3" VALVE FLANGES ARE DRILLED THRU PER ANSI FLANGE DIMENSIONS.

*B DIMENSION IS MAXIMUM WHEN VALVE IS FULL OPEN.

NOTE: "A" DIMENSION ON VALVES WITH RAISED FACE FLANGES DOES NOT INCLUDE THE RAISED FACE HEIGHT.

FLANGES PER ANSI

NO.	DIMENSIONS					
	2"		2 1/2"		3"	
	IN.	MM	IN.	MM	IN.	MM
A	7 3/4	197	7 3/4	197	7 3/4	197
B	16 1/2	419	16 1/2	419	16 1/2	419
C	8	203	8	203	8	203
D	7	178	7	178	7	178

DATA REQUIRED:
 A. VALVE OPEN WHEN INLET PRESSURE EXCEEDS _____ PSI
 B. INLET FLOW DIRECTION _____
 C. OUTLET FLOW DIRECTION _____
 D. SERIAL NUMBER _____

J:\GA-VALVE\GA-SHOW\K-1011-2-C.DWG

GA INDUSTRIES, LLC				
2"-3" ELBOW SEWAGE RELIEF VALVE				
STANDARD TOLERANCES (UNLESS OTHERWISE NOTED) FINISHED SURFACES ONLY DIMENSIONS SHOWN IN INCHES .x = ±.02 .xx = ±.01 .xxx = ±.002 FRACTIONS ±1/64" ANGLES ±1° FINISH ⌀/- XX RMS	SERIAL NO.	SCALE	DRAWN BY HGM	
	REFERENCES	EFFECTIVE DATE	APPR. BY	
K-1011	9-29-1995	TO		
	FIG. NUMBER	FILE	DRAWING NO.	REV.
	625-D	K	K-1011-2	C

LIST OF MATERIALS
4"-8" CI-BR ELBOW SEWAGE RELIEF VALVE

1	Body	Cast Iron	CI A126 Class B
2	Cover	Cast Iron	CI A126 Class B
3	Piston	Brass	BR SAE 660
4	Piston Seal	Rubber	Buna-N
5	Spring Yoke	Steel	1018 CF
6	Gland Packing	Rubber	Nitrile
7	Lantern Ring	Brass	SAE 660
8	Gland	Brass	BR SAE 660
9	Disc	Ductile Iron	A536
10	Gland Seal	Rubber	Buna-N
11	Cover Seal	Rubber	Buna-N
12	Piston Rod Seal	Rubber	Buna-N
13	Disc Seal	Rubber	Buna-N
14	Piston Rod	Steel	1018 CF
15	Disc Stem	Stainless Steel	303
16	Cylinder	Brass	BR SAE 660
17	Springs	Chrome Vanadium Steel	Commercial
18	Cover Bolts	Steel	Commercial
19	Seat	Stainless Steel	316
20	Seat Ring	Leather	Thiokol
21	Seat Ring Follower	Stainless Steel	316
22	Seat Ring Follower Screws	Stainless Steel	18-8
23	Flow Control Valves	Brass	Commercial
24	Oil Reservoir	Steel	Commercial
27	Bushing	Brass	SAE 660
28	Bushing Seal	Rubber	Buna-N
29	Piston Vent Plug	Bronze	Commercial
30	Spring Adjusting Screws Assembly	Steel	Commercial
31	Adjusting Screw Washer	Steel	Commercial
32	Spring Adjusting Washer	Brass	SAE 72
33	Spring Adjusting Washer Pin	Stainless Steel	18-8
34	Spring Chamber	Steel	Commercial
35	Spring Retainer Cap	Aluminum Bronze	B148-9B
36	Clevis Pin	Stainless Steel	303
36A	Clevis Link	Steel	1018 CF
37	Air Vent Plug	Steel	Commercial
38	Clevis Pin Cotter Pin	Stainless Steel	18-8
38A	Clevis Pin Washer	Steel	Commercial
39	Disc Stem Locking Bolt	Stainless Steel	18-8
40	Disc Stem Locking Washer	Stainless Steel	18-8
42	Cover & Oil Reservoir Bolt	Steel	Commercial