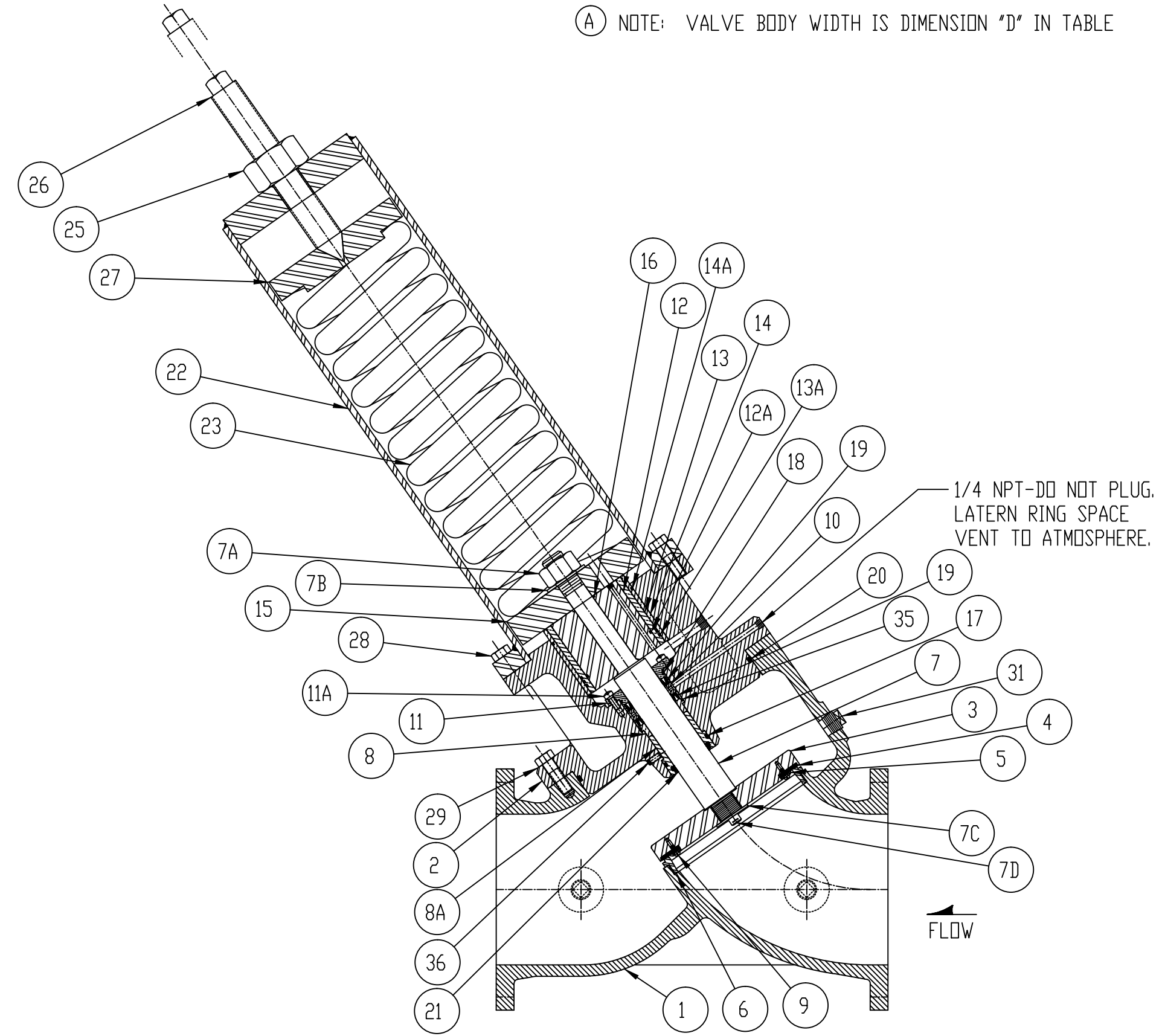
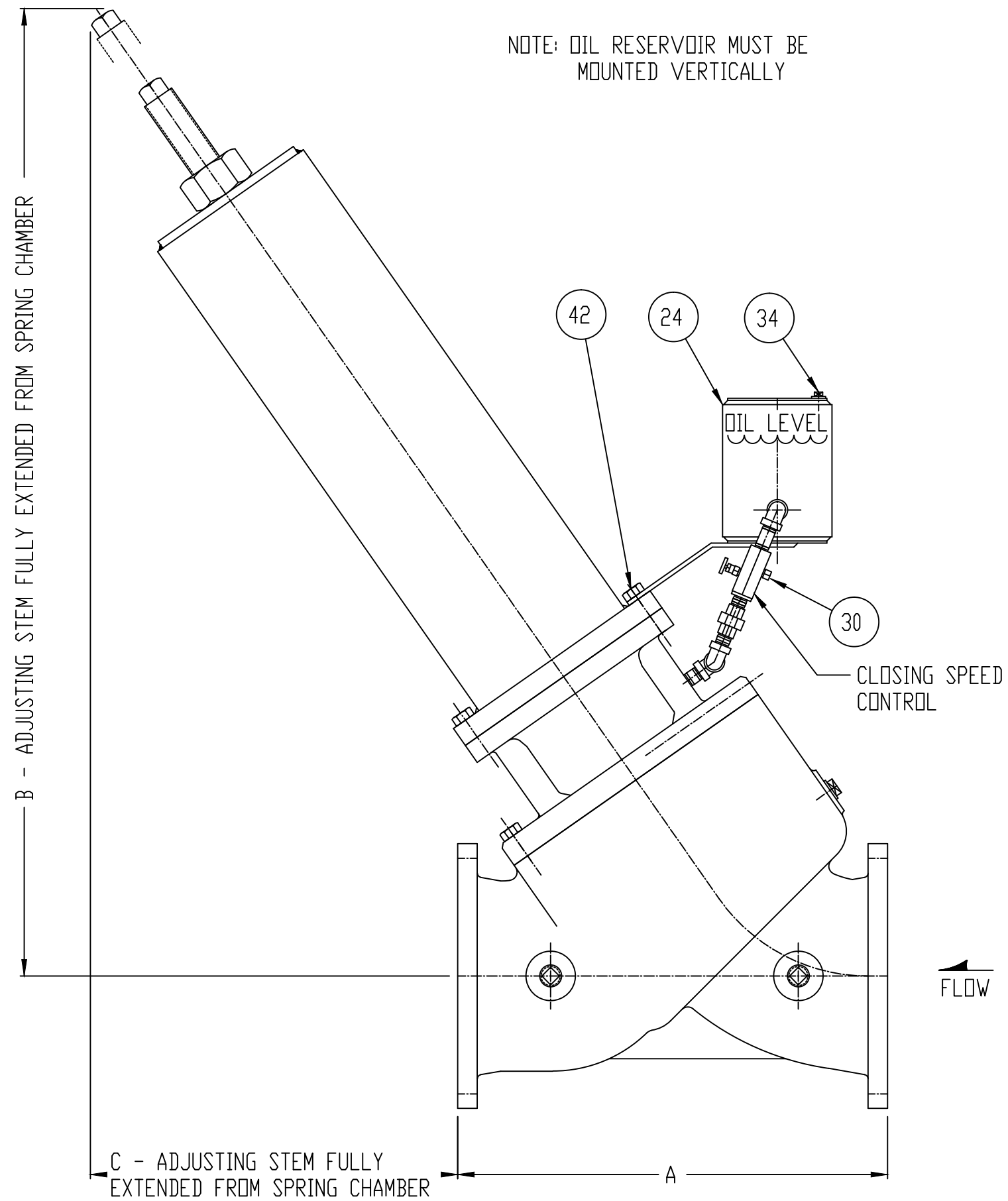


# PARTS LIST

No.	DESCRIPTION	No.	DESCRIPTION	No.	DESCRIPTION	No.	DESCRIPTION	No.	DESCRIPTION
1	BODY	7B	DISC STEM WASHER	11A	GLAND SCREWS	16	PISTON I.D. SEAL	24	OIL RESERVOIR
2	COVER	7C	DISC STEM LOCKWASHER	12	PISTON	17	LOWER BUSHING SEAL	25	ADJUSTING STEM LOCKNUT
3	DISC	7D	DISK STEM LOCK SCREW	12A	PISTON SEAL	18	GLAND SEAL	26	ADJUSTING STEM
4	DISC SEAT RING	8	UPPER BUSHING	13	PISTON LINER	19	STEM SEALS	27	SPRING GUIDE
5	DISC SEAT RING FOLLOWER	8A	LOWER BUSHING	13A	PISTON LINER SEAL	20	COVER SEAL	28	SPRING CHAMBER BOLTS
6	BODY SEAT	9	DISC SEAT RING SCREWS	14	PISTON BUSHING	21	LOWER BUSHING ROD WIPER	29	COVER BOLTS
7	DISC STEM	10	LANTERN RING	14A	PISTON BUSHING SEAL	22	SPRING CHAMBER	30	FLOW CONTROL VALVE
7A	DISC STEM NUT	11	GLAND	15	PISTON FOLLOWER	23	SPRING	31	INSPECTION PLUGS

	A 125#		A 250#		B		C		D	
	IN	MM	IN	MM	IN	MM	IN	MM	IN	MM
10"	26	660	27 3/8	695	56 1/8	1426	20 1/2	521	18	457
12"	31	787	32 1/2	825	64 1/2	1638	22 5/8	575	19 5/8	499
14"	33	838	34 1/2	876	72 7/8	1851	27 1/2	699	21	533
16"	36	914	38 5/8	981	68 1/4	1734	20 5/8	524	25 1/2	648



D	(COMBINED DIMENSION B & C FOR HEIGHT) & (CHANGED DIM D TO C) & (CHANGED DIM E TO D)	8-25-06	HGM
C	ADDED 250# DIMENSIONS FOR 12" & 16" VALVES	8-26-03	HGM
B	16" VALVE DIMENSIONS ADDED TO TABLE	8-2-02	FP
A	ADDED BODY WIDTH DIMENSION "E" TO TABLE	3-30-01	HGM
REV	DESCRIPTION	DATE	BY

## GA INDUSTRIES, INC.

### 10"-16" WYE BODY SEWAGE RELIEF VALVE

STANDARD TOLERANCES (UNLESS OTHERWISE NOTED)	SERIAL NO.	SCALE NONE	DRAWN BY MJB
FINISHED SURFACES ONLY DIMENSIONS SHOWN IN INCHES X = .02 XX = .01 XXX = .002 FRACTIONS: 1/64" ANGLES: 3" FINISH: XX RMS	REFERENCES REDRAWN 6/12/96	EFFECTIVE DATE 8/2/02	TO DRAWING NO. K-1255
	FIG. NUMBER 626-D	FILE K-6	REV. D

F:\GA-VALVE\GA-SHOW\K-1255-D.PRT