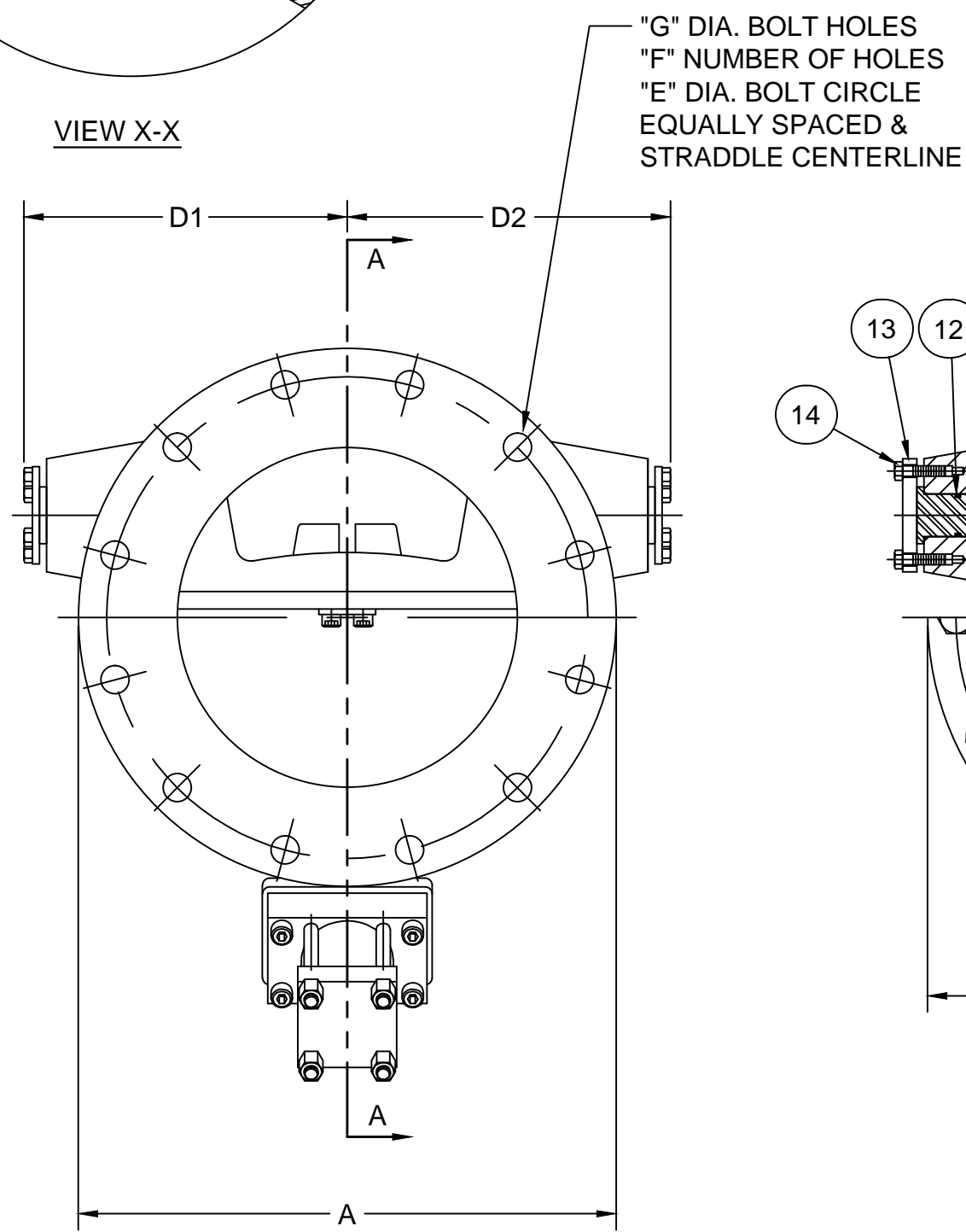
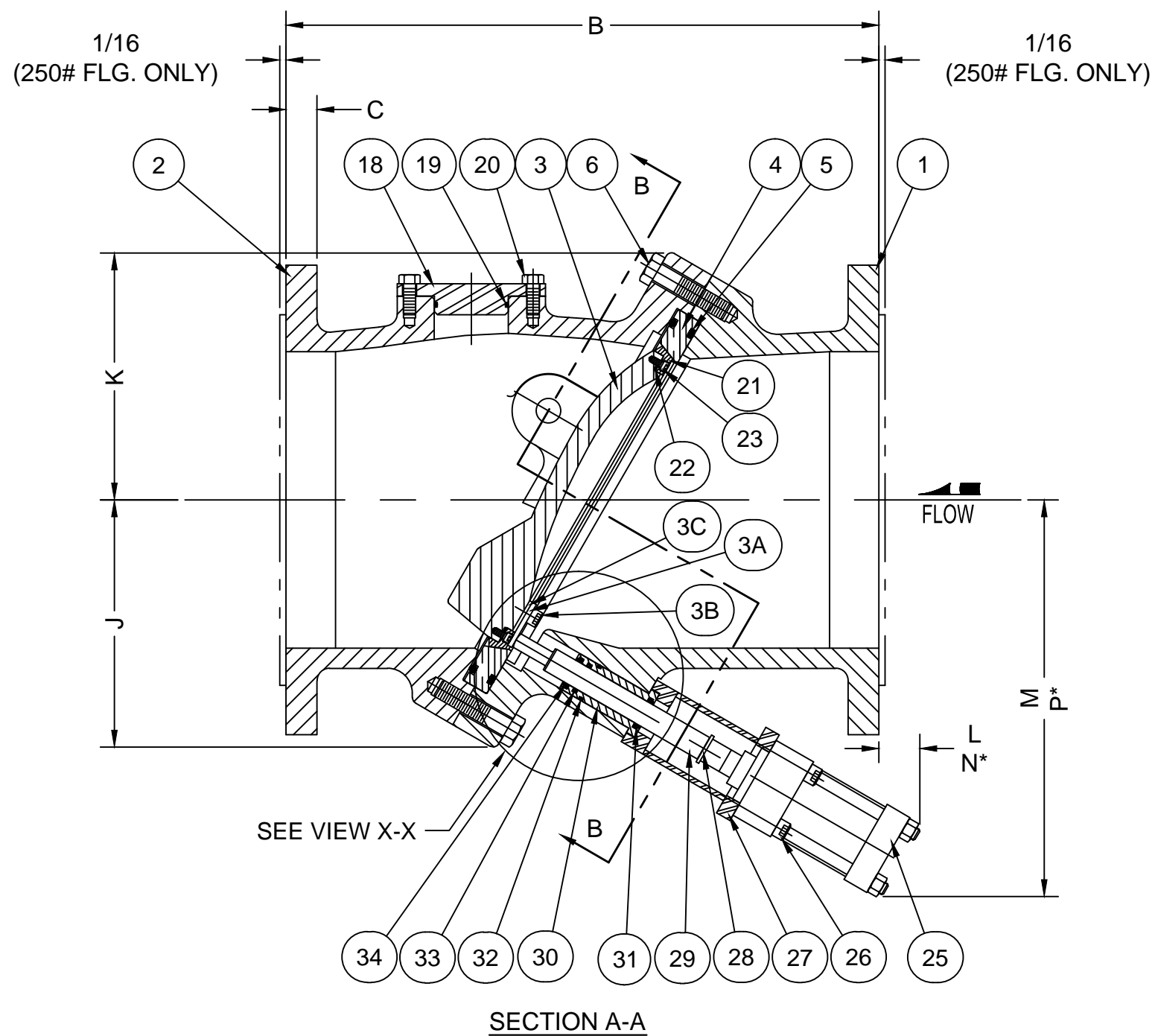
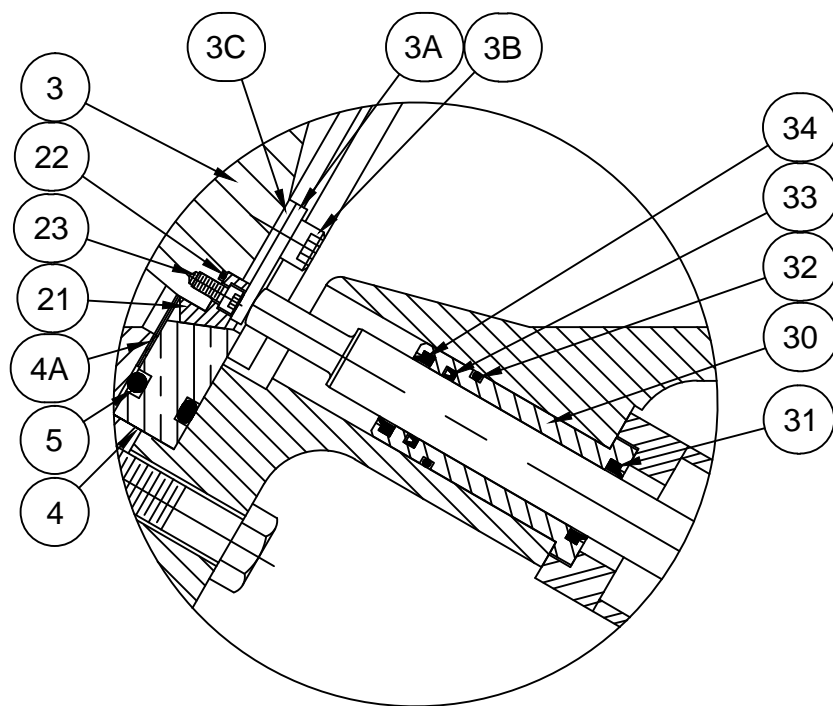


VALVE SIZE	A		B	C		D1	D2	E		F		G		H	J	K	L	M	N*	P*	EST. WT.
	125#	250#		125#	250#			125#	250#	125#	250#										
16	23 1/2	25 1/2	30	1 7/16	2 1/4	14 1/4	14 1/4	21 1/4	22 1/2	16	20	1 1/8	1 3/8	25	12 5/8	11 3/4	1"	19 1/2	10 1/4	24 3/4	1270 lbs
18	25	28	33	1 9/16	2 3/8	15 1/4	15 1/4	22 3/4	24 3/4	16	24	1 1/4	1 3/8	27 1/4	13 1/8	13		20	8	25 1/2	1500 lbs
20	27 1/2	30 1/2	32	1 11/16	2 1/2	17	17	25	27	20	24	1 1/4	1 3/8	30	14 1/4	14 1/4		21	8 1/2	26 1/2	1780 lbs
24	32	36	38	1 7/8	2 3/4	18 1/4	18 1/4	29 1/2	32	20	24	1 3/8	1 5/8	35	16 1/2	16 1/2		25	6 1/2	29 1/2	2260 lbs
30	38 3/4	43	53 3/4	2 1/8	2 15/16	24	24	36	39 1/4	28	28	1 3/8	2	52 1/2	22 7/8	23 3/4		30	7	35	4500 lbs
36	46	50	59 1/2	2 3/8	3 5/16	26 1/2	26 1/2	42 3/4	46	32	32	1 5/8	2 1/4	52	25	24 1/4		35	7 1/2	41	6600 lbs
42	53	57	60	2 5/8	3 11/16	30	30	49 1/2	52 3/4	36	36	1 5/8	2 1/4	60	17 3/4	28		37 1/2	8	43	8820 lbs

PARTS LIST	
No.	DESCRIPTION
1	INLET BODY SECTION
2	OUTLET BODY SECTION
3	DISC
3A	DISC STRIKER PLATE
3B	DISC STRIKER PLATE SCREWS
3C	DISC STRIKER PLATE SPACER
4	SEAT RING
5	SEAT RING SEALS
6	BODY BOLTS
11	PIVOT PIN
12	PIVOT PIN SEAL
13	END PLATE
14	END PLATE BOLTS
18	OUTLET BODY SECTION INSPECTION COVER
19	OUTLET BODY SECTION INSPECTION COVER SEAL
20	OUTLET BODY SECTION INSPECTION COVER BOLTS
21	DISC SEAT
22	DISC SEAT SEAL
23	DISC SEAT SCREWS
24	DISC BUSHING
25	HYDRAULIC CYLINDER
26	CYLINDER BOLTS
27	ADAPTOR
28	BUFFER SHAFT RETAINING RING
29	BUFFER SHAFT
30	BUSHING
31	CYLINDER END ROD WIPER
32	BUSHING SEAL
33	SHAFT SEAL
34	VALVE END ROD WIPER
35	ADAPTOR BOLTS

NOTES:

1. FLANGES PER ANSI B16.1
2. DIMENSION "B" ON VALVE WITH RAISED FACE FLANGES DOES NOT INCLUDE THE RAISED FACE HEIGHT
3. \* DIMENSION "N" & "P" REPRESENT CLEARANCE REQUIRED FOR BUFFER REMOVAL
4. REFER TO TD-1005 FOR HYDRAULIC PIPING



REV.	DESCRIPTION	DATE	BY
F	ADDED NOTE, REVISE DIM J,K,N, & P, CLASS 250 DIM B WAS 52	12-03-2013	BRF
E	ADDED SIZES 16" & 18"	08-04-2011	RJT
D	REDRAWN IN AUTOCAD, ADDED SIZES 20 & 24	08-31-2010	RJT
C	REVISED SEAT RING SEAL CONFIGURATION	10-29-2003	MJB
B	ADDED ITEM 4A	08-09-2003	MJB
A	ADDED ITEMS 3A, 3B & 3C	04-01-2003	MJB

**GA INDUSTRIES, LLC**  
 16" - 42" TILTING DISC CHECK VALVE ASSEMBLY  
 w/ BOTTOM MOUNTED BUFFER

DIMENSIONS IN INCHES  
 STANDARD TOLERANCES (UNLESS OTHERWISE NOTED)  
 X ± 0.1  
 XX ± 0.01  
 XXX ± 0.005  
 FRACTIONS = ± 1/64  
 ANGLES = ± 1°  
 DRAFTS: 3° MAX  
 PER ANSI Y14.4M COAT-030 FLATNESS, ROUNDNESS, POSITION

SERIAL NO.	FIG. NUMBER	DATE	PROPERTY OF	DRAWN BY	APPR. BY	SCALE
	7125B	02-06-2002	GA INDUSTRIES, LLC	MJB		NTS
REFERENCES	FILE	DRAWING NO.	REV.			
TD-1045	TD	TD-1044	F			

U:\Autocad\Tilting-Disc\TD-1044-F.dwg