

VALVE SIZE	A		B	C		D1	D2	E		F		G		H	J	M	EST. WT.
	125#	250#		125#	250#			125#	250#	125#	250#	125#	250#				
6	11	12 1/2	15 1/2	1	1 7/16	7	7	9 1/2	10 5/8	8	12	7/8	7/8	11 1/2	6	26	200#
8	13 1/2	15	17 1/2	1 1/8	1 5/8	9 1/2	9 1/2	11 3/4	13	8	12	7/8	1	14 3/4	8 1/4	27	360#
10	16	17 1/2	24 1/2	1 3/16	1 7/8	9 3/4	9 3/4	14 1/4	15 1/4	12	16	1	1 1/8	17	9 1/4	30	580#
12	19	20 1/2	24	1 1/4	2	12 1/2	12 1/2	17	17 3/4	12	16	1	1 1/4	21	11 1/4	32	770#
14	21	23	31	1 3/8	2 1/8	13	13	18 3/4	20 1/4	12	20	1 1/8	1 1/4	22 5/8	11 3/8	34	990#

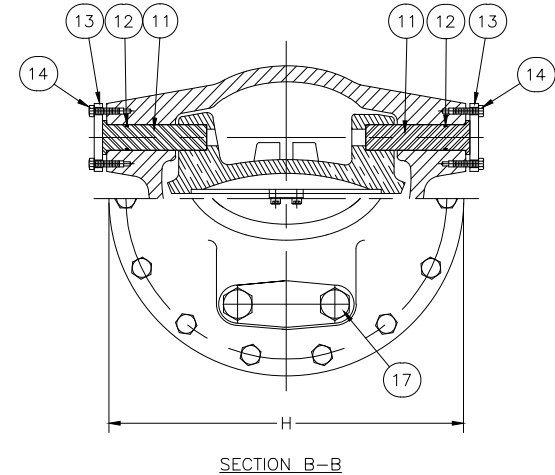
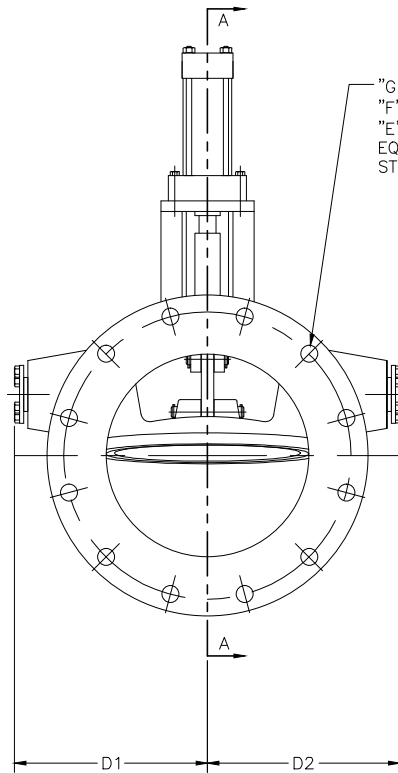
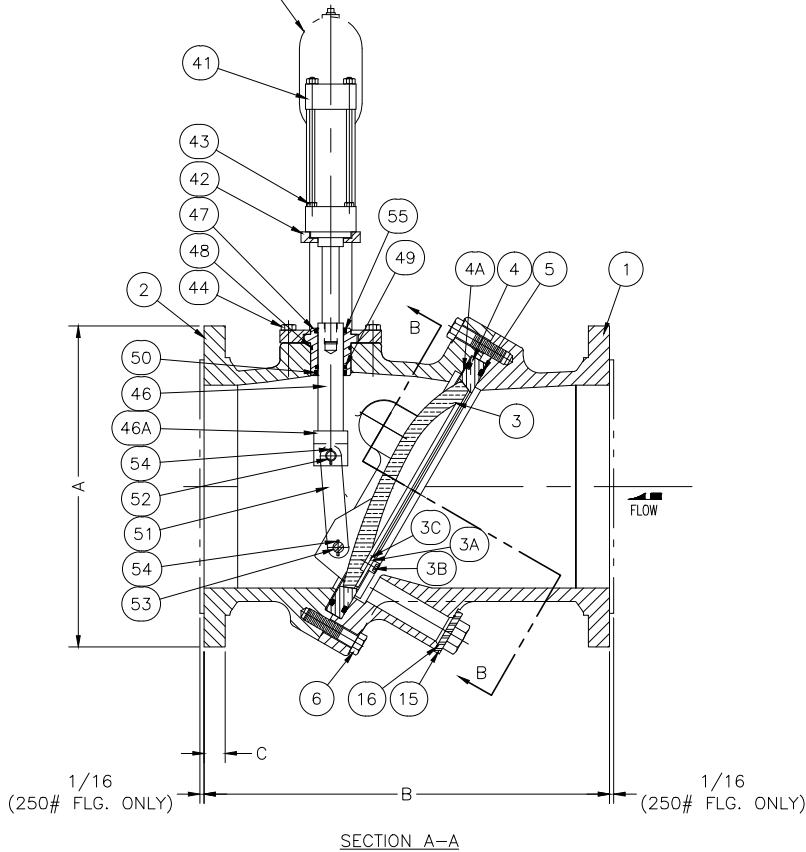
PARTS LIST

No.	DESCRIPTION	No.	DESCRIPTION
1	INLET BODY SECTION	17	INLET BODY SECTION INSPECTION COVER BOLTS
2	OUTLET BODY SECTION	41	HYDRAULIC CYLINDER
3	DISC	42	ADAPTOR
3A	DISC STRIKER PLATE	43	CYLINDER BOLTS
3B	DISC STRIKER PLATE SCREWS	44	ADAPTOR BOLTS
3C	DISC STRIKER PLATE SPACER	45	VALVE END ROD WIPER
4	SEAT RING	46	DASHPOT STEM
4A	SEAT RING ADJUSTMENT SHIMS	46A	CLEVIS
5	SEAT RING SEALS	47	DASHPOT BUSHING
6	BODY BOLTS	48	DASHPOT BUSHING SEAL
11	PIVOT PIN	49	STEM SEAL
12	PIVOT PIN SEAL	50	VALVE END ROD WIPER
13	END PLATE	51	LINK
14	END PLATE BOLTS	52	UPPER LINK PIN
15	INLET BODY SECTION INSPECTION COVER	53	LOWER LINK PIN
		54	LINK PIN COTTER PIN
16	INLET BODY SECTION INSPECTION COVER SEAL	55	CYLINDER END ROD WIPER

FLANGES PER ANSI B16.1

NOTE:
"B" DIMENSION ON VALVES WITH RAISED FACE
FLANGES DOES NOT INCLUDE THE RAISED FACE HEIGHT

AIR/OIL TANK & OIL RESERVOIR
REF. HYDRAULIC PIPING DWG.



J:\TILDISC\TD-SHOW\TD-1021-F.DWG

GA INDUSTRIES, LLC

6"-14" TILTING DISC CHECK VALVE ASSEMBLY
WITH TOP MOUNTED DASHPOT

STANDARD TOLERANCES (UNLESS OTHERWISE NOTED)	SERIAL NO.	SCALE	DRAWN BY	
		NONE	MJB	
FINISHED SURFACES ONLY DIMENSIONS SHOWN IN INCHES ±.002 ±.001 ±.000 FRACTIONS ±1/64" ANGLES ±1° FINISH Ⓢ-XX RMS	REFERENCES	EFFECTIVE DATE	FILE	DRAWING NO.
		06-22-2000 TO	TD	TD-1021
	FIG. NUMBER			REV.
	7125-T			F

REV.	DESCRIPTION	DATE	BY
E	DELETED SIZES 16"-18"	08-04-2010	RJT
E	REDRAWN IN AUTOCAD, ADDED SIZES 14"-18"	08-31-2010	RJT
D	REMOVED SIZES 14"-24" (SEE DWG. TD-1056) DISC SEAT 2 PIECE	03-27-2003	HGM
C	REVISED SEAT RING SEAL CONFIGURATION	10-29-2001	MJB
B	ADDED PARTS #3A, 3B, 3C & 4A.	08-13-2003	MJB
A	ADDED 6" VALVE SIZE	12-10-2001	MJB