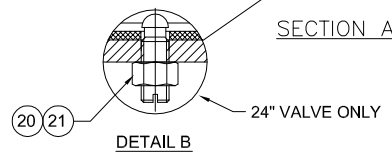
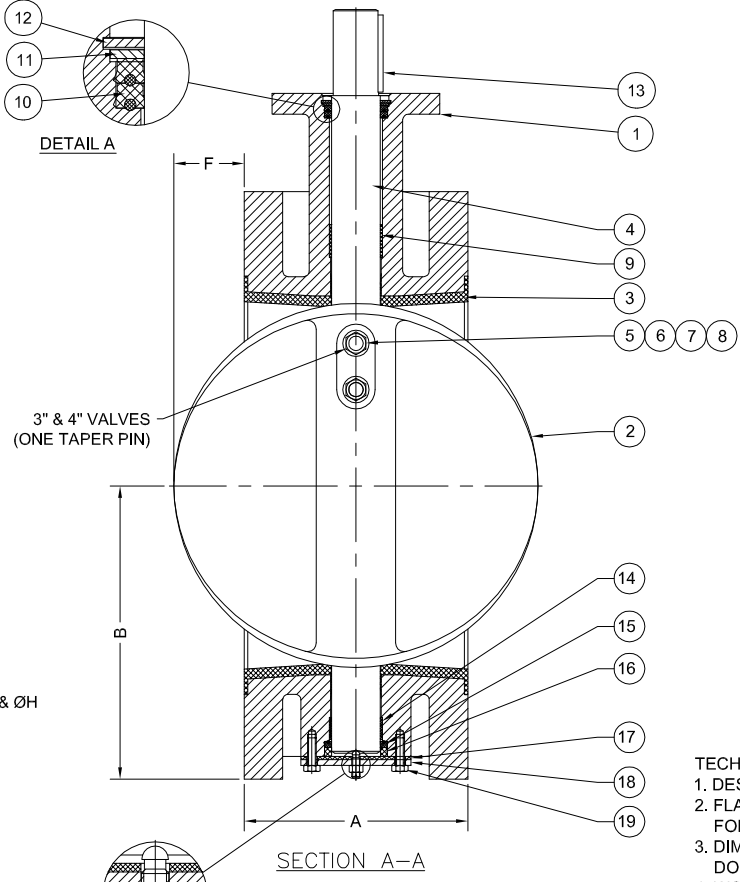
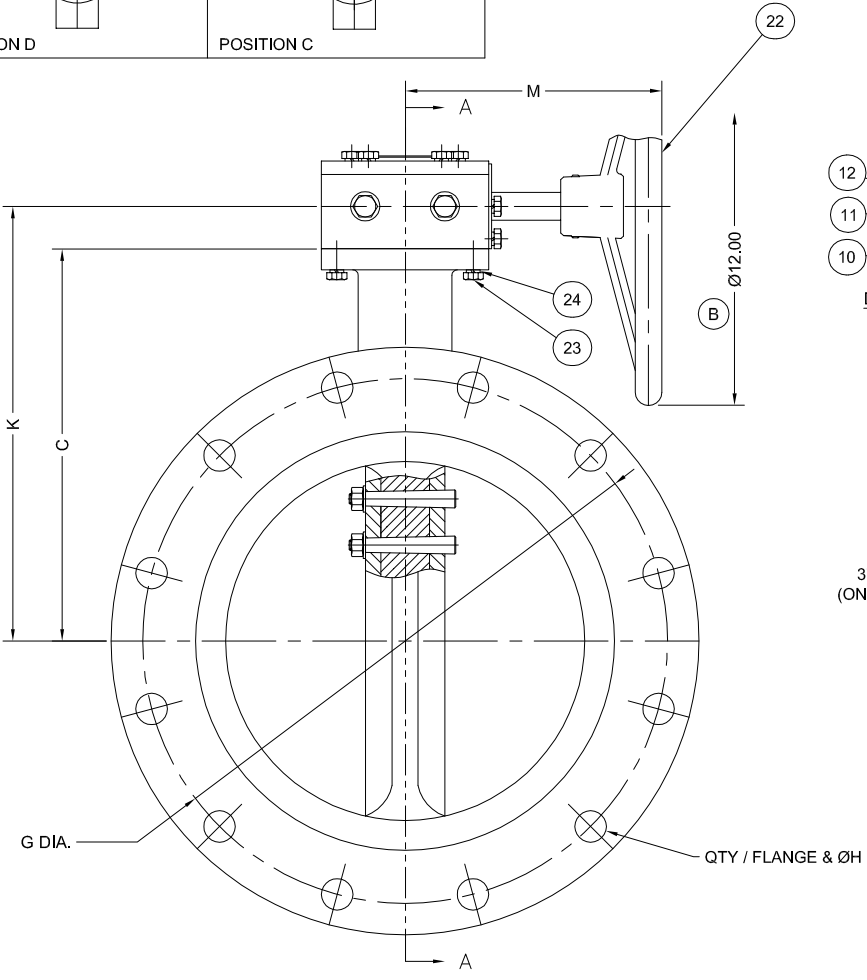


(B)

VALVE DIMENSIONS										
SIZE	A	B	C	K	M	F(TYP)	ØG	QTY/FLANGE & ØH	MTG	APPROX. WEIGHT
3"	5.00	3.75	6.25	7.75	8.90	—	6.00	(4) - Ø3/4	FA07	53
4"	5.00	4.50	7.00	8.50	8.90	—	7.50	(8) - Ø3/4	FA07	66
6"	5.00	5.88	8.00	9.50	8.90	.50	9.50	(8) - Ø7/8	FA12	91
8"	6.00	6.75	9.50	11.00	8.90	1.00	11.75	(8) - Ø7/8	FA12	135
10"	8.00	8.06	10.75	12.25	9.13	1.00	14.25	(12) - Ø1	FA12	179
12"	8.00	9.50	12.31	13.81	9.13	2.00	17.00	(12) - Ø1	FA12	232
14"	8.00	10.56	14.00	15.50	9.13	3.00	18.75	(12) - Ø1 1/8	FA12	290

PARTS LIST	
NO.	NAME
1	BODY
2	DISC
3	SEAT
4	SHAFT
5	DISC PINS
6	DISC NUTS
7	DISC WASHERS
8	DISC SEALS
9	UPPER BEARING
10	UPPER SHAFT PACKING
11	UPPER PACKING WASHER
12	RETAINER
13	KEY
14	LOWER BEARING
15	LOWER SHAFT PACKING
16	LOWER PACKING WASHER
17	GASKET
18	BOTTOM COVER
19	BOTTOM COVER SCREWS
20	ADJUSTABLE THRUST BEARING
21	BEARING NUT
22	WORM GEAR ACTUATOR
23	ACTUATOR SCREWS
24	ACTUATOR WASHERS

(A)



TECHNICAL REQUIREMENTS:
 1. DESIGN STANDARD, AWWA C504
 2. FLANGE DRILLING PER ANSI B16.1 CLASS 125 FOR BOTH CLASS 150B AND 250B VALVES.
 3. DIMENSIONS IN INCHES, WEIGHT IN POUNDS. DOES NOT INCLUDE ACTUATOR.
 4. WORKING PRESSURE 150 PSI OR 250 PSI BASED ON CLASS.
 5. SHAFT DIAMETER AND BODY WALL THICKNESS PER AWWA C504.

B	REVISED DIMENSIONS 'M' & 'Q' AND WEIGHTS AS REQUIRED per ACTUATOR CHANGE: REMOVE VIEW B-B	10-21-2014	BRF
A	REVISED PARTS LIST	06-23-2014	BRF
REV.	DESCRIPTION	DATE	BY

DIMENSIONS IN INCHES
 STANDARD TOLERANCES (UNLESS OTHERWISE NOTED):
 3" & 4" 0.10 ± 0.10
 6" & 8" 0.10 ± 0.10
 10" & 12" 0.10 ± 0.10
 14" 0.10 ± 0.10
 ANGLES ± 0.1°
 DIMENTS OF MAX.
 PER ANSI Y14.5M GEOM. CONTROL ROUNDNESS PERFORM

GA INDUSTRIES, LLC
 3"-14" ANSI FLANGED BUTTERFLY VALVE
 W/ WORM GEAR ACTUATOR

SERIAL NO.	DRAWN BY
FIG. NUMBER A804	APPR. BY JT
DATE 10-02-2009	SCALE NTS
PROPERTY OF GA INDUSTRIES, LLC	
REFERENCES	FILE
BF	BF-1015
DRAWING NO.	REV.
BF-1015	B

J:\BUTTERFLYBF-SHOWBF-1015-B.dwg