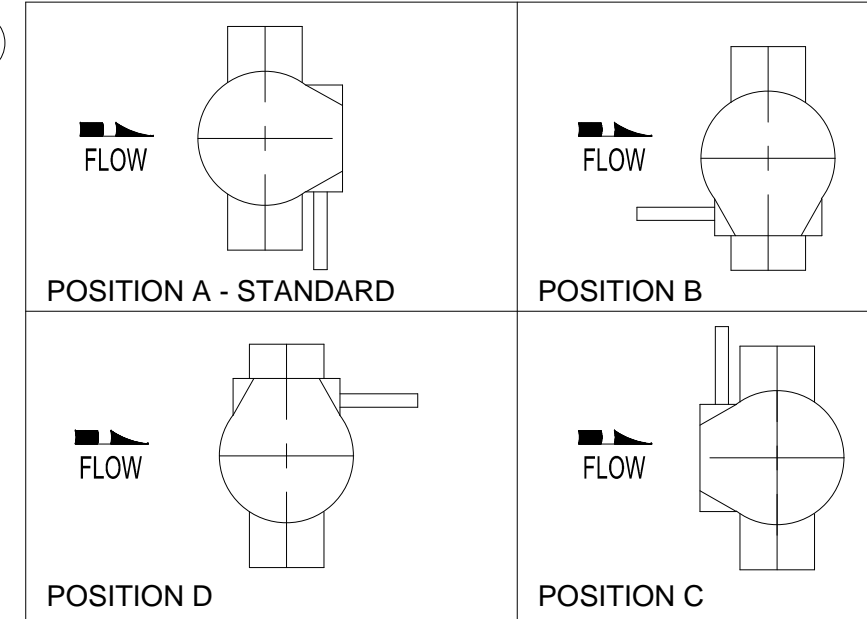


PARTS LIST	
NO.	NAME
1	BODY
2	DISC
3	SEAT
4	SHAFT
5	DISC PINS
6	DISC NUTS
7	DISC WASHERS
8	DISC SEALS
9	UPPER BEARING
10	UPPER SHAFT PACKING
11	UPPER PACKING WASHER
12	RETAINER
13	KEY
14	LOWER BEARING
15	LOWER SHAFT PACKING
16	LOWER PACKING WASHER
17	GASKET
18	BOTTOM COVER
19	BOTTOM COVER SCREWS
20	ADJUSTABLE THRUST BEARING
21	BEARING NUT
22	TRAVELING NUT ACTUATOR
23	ACTUATOR SCREWS
24	ACTUATOR WASHERS



TECHNICAL REQUIREMENTS:
 1. DESIGN STANDARD, AWWA C504
 2. FLANGE DRILLING PER ANSI B16.1 CLASS 125 FOR BOTH CLASS 150B AND 250B VALVES.
 3. DIMENSIONS IN INCHES, WEIGHT IN POUNDS. DOES NOT INCLUDE ACTUATOR.
 4. WORKING PRESSURE 150 PSI OR 250 PSI BASED ON CLASS.
 5. SHAFT DIAMETER AND BODY WALL THICKNESS PER AWWA C504.

SIZE	A	B	C	F (TYP.)	ØG	#ØH	J	K	M	N SQ	MTG.	WGT.
24"	8	17.12	22.50	8.00	29.50	16-φ1 3/8	1 1/4-7 UNC	26.46	14.60	2.00	FA16	726
20"	8	14.62	18.00	6.00	25.00	16-φ1 1/4	1 1/8-7 UNC	22.01	13.94	2.00	FA16	496
18"	8	13.00	16.50	5.00	22.75	12-φ1 1/4	1 1/8-7 UNC	20.48	13.94	2.00	FA16	403
16"	8	12.31	15.00	4.00	21.25	12-φ1 1/8	1-8 UNC	18.98	13.94	2.00	FA16	321
14"	8	10.56	14.00	3.00	18.75	12-φ1 1/8	—	16.91	9.50	2.00	FA12	259
12"	8	9.50	12.31	2.00	17.00	12-φ1	—	15.21	9.50	2.00	FA12	201
10"	8	8.06	10.75	1.00	14.25	12-φ1	—	13.65	9.50	2.00	FA12	148
8"	6	6.75	9.50	1.00	11.75	8-Ø7/8	—	12.19	8.39	2.00	FA12	108
6"	5	5.88	8.00	0.50	9.50	8-Ø7/8	—	10.65	8.39	2.00	FA12	64
4"	5	4.50	7.00	—	7.50	8-Ø3/4	—	9.67	8.39	2.00	FA07	39
3"	5	3.75	6.25	—	6.00	4-Ø3/4	—	8.92	8.39	2.00	FA07	26

STANDARD TOLERANCES (UNLESS OTHERWISE NOTED)
 FINISHED SURFACES ONLY
 DIMENSIONS SHOWN IN INCHES
 X = ±.02
 XX = ±.01
 XXX = ±.002
 FRACTIONS ±1/64"
 ANGLES ±1°
 FINISH -XX RMS

SERIAL NO.	SCALE	DRAWN BY	HGM
	N.T.S.	APPR. BY	JT
REFERENCES	EFFECTIVE DATE	10-02-2009	TO
	FIG. NUMBER	FILE	DRAWING NO.
	804	BF	BF-1017
			REV.
			A

REV.	DESCRIPTION	DATE	BY
A	REVISED PARTS LIST	06-23-2014	BRF

J:\BUTTERFLYBF-SHOWBF-1017-A.DWG

GA INDUSTRIES, LLC.

3"-24" ANSI FLANGED BUTTERFLY VALVE
 W/BURIED SERVICE TRAVELING NUT ACTUATOR