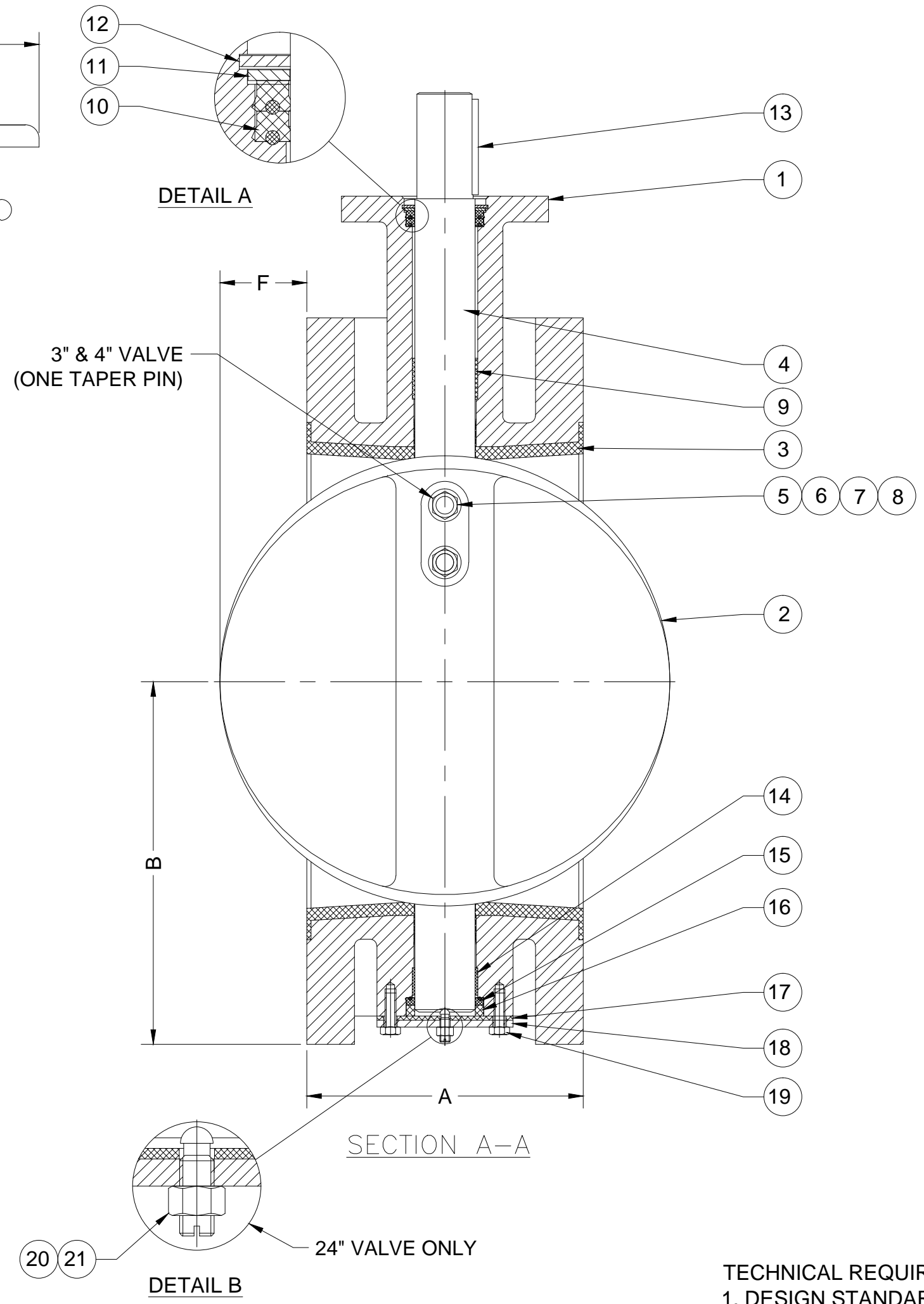


VIEW B-B



PARTS LIST	
NO.	NAME
1	BODY
2	DISC
3	SEAT
4	SHAFT
5	DISC PINS
6	DISC NUTS
7	DISC WASHERS
8	DISC SEALS
9	UPPER BEARING
10	UPPER SHAFT PACKING
11	UPPER PACKING WASHER
12	RETAINER
13	KEY
14	LOWER BEARING
15	LOWER SHAFT PACKING
16	LOWER PACKING WASHER
17	GASKET
18	BOTTOM COVER
19	BOTTOM COVER SCREWS
20	ADJUSTABLE THRUST BEARING
21	BEARING NUT
22	LEVER
23	LEVER SCREWS
24	LEVER WASHERS
25	LEVER NUTS

- TECHNICAL REQUIREMENTS:
1. DESIGN STANDARD, AWWA C504
 2. FLANGE DRILLING PER ANSI B16.1 CLASS 125 FOR BOTH CLASS 150B AND 250B VALVES.
 3. DIMENSIONS IN INCHES, WEIGHT IN POUNDS. DOES NOT INCLUDE ACTUATOR.
 4. WORKING PRESSURE 150 PSI OR 250 PSI BASED ON CLASS.
 5. SHAFT DIAMETER AND BODY WALL THICKNESS PER AWWA C504.

GA INDUSTRIES, LLC.
3"-8" ANSI FLANGED BUTTERFLY VALVE
w/ LEVER

SIZE	A	B	C	D	F (TYP.)	ØG	#-ØH	L	MTG.	WGT.
8"	6	6.75	9.50	2.05	1.00	11.75	8-Ø7/8	17.72	FA12	108
6"	5	5.88	8.00	2.05	.50	9.50	8-Ø7/8	17.72	FA12	64
4"	5	4.50	7.00	1.54	—	7.50	8-Ø3/4	10.24	FA07	39
3"	5	3.75	6.25	1.54	—	6.00	4-Ø3/4	10.24	FA07	26

STANDARD TOLERANCES (UNLESS OTHERWISE NOTED):
 FINISHED SURFACES ONLY
 DIMENSIONS SHOWN IN INCHES
 .x = ±.02
 .xx = ±.01
 .xxx = ±.002
 FRACTIONS ±1/64"
 ANGLES ±1'
 FINISH -XX RMS

SERIAL NO.	SCALE	DRAWN BY	
	N.T.S.	HGM	
REFERENCES	EFFECTIVE DATE	APPR. BY	
	10-02-2009	JT	
FIG. NUMBER	FILE	DRAWING NO.	REV.
804	BF	BF-1013	A

REV.	DESCRIPTION	DATE	BY
A	REVISED PARTS LIST	06-23-2014	BRF

J:\BUTTERFLY\BF-SHOWBF-1013-A.DWG