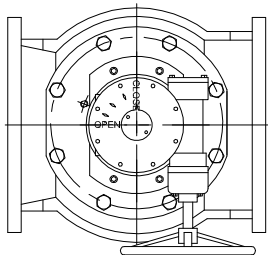
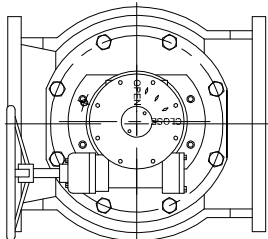


SEAT
END



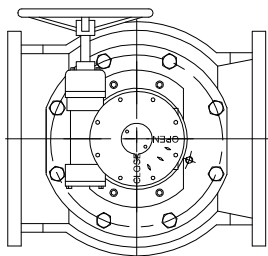
POSITION A - STANDARD

SEAT
END



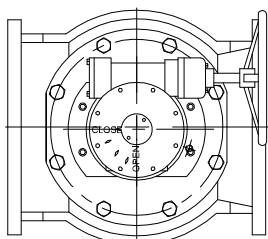
POSITION B

SEAT
END



POSITION C

SEAT
END



POSITION D

OPTIONAL ACTUATOR POSITIONS
CUSTOMER TO SPECIFY POSITION WITH ORDER
POSITION "A" SHOWN IN MAIN VIEW
POSITION "A" IS STANDARD

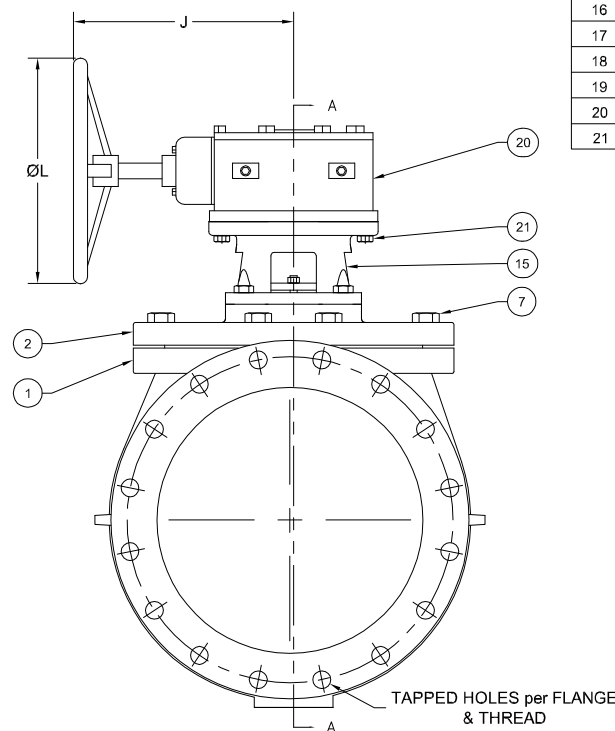
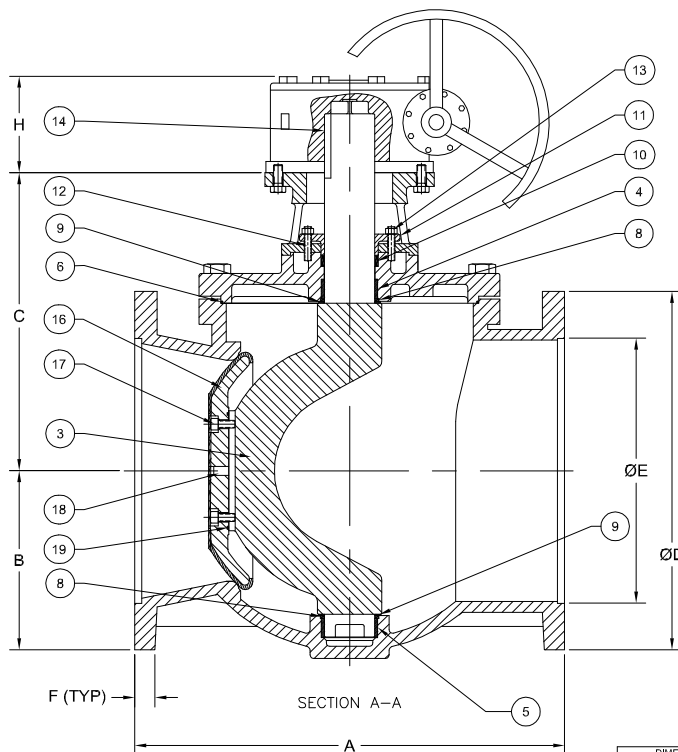
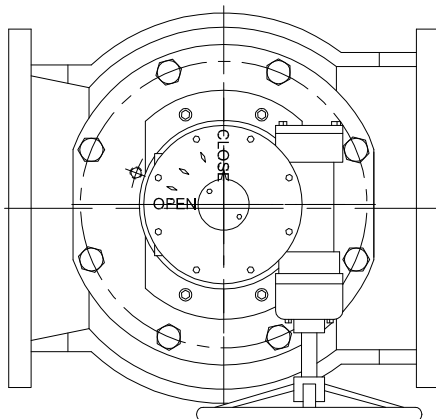
DIMENSIONS

Valve Size	A		B		C		ØD		ØE		F		H		J		ØL		TAPPED HOLES per FLANGE & THREAD	APPROX. WEIGHT	
	IN	MM	IN	MM	IN	MM	IN	MM	IN	MM	IN	MM	IN	MM	IN	MM	IN	MM	IN	LB	KG
14"	17.00	432	10.88	276	19.05	592	21.00	533	13.97	355	1.38	35	6.50	164	19.69	500	19.69	500	4x 1-8UNC	757	344
16"	17.75	451	13.00	330	20.85	638	23.50	597	16.13	410	1.44	37	6.50	164	19.69	500	19.69	500	4x 1-8UNC	952	433
18"	30.00	762	13.13	334	20.85	638	25.00	635	18.00	457	1.56	40	6.50	164	19.69	500	19.69	500	0	1254	570
20"	36.00	914	15.75	400	22.75	686	27.50	699	20.06	510	1.69	43	6.50	164	19.69	500	19.69	500	4x 1 1/8-7UNC	2004	911

NOTES:

1. FLANGE DRILLING PER ANSI B16.1 / CL125
2. IN COMPLIANCE WITH AWWA C517
3. COLD WORKING PRESSURE: 150 PSI
4. HYDROSTATIC TEST PRESSURE: 225 PSI

PARTS LIST	
NO.	Description
1	Body
2	Cover
3	Shaft
4	Cover Bearing
5	Body Bearing
6	Cover O-Ring
7	Cover Bolts
8	Grit Excluder Seal
9	Thrust Washer
10	Packing
11	Gland
12	Gland Studs
13	Gland Nuts
14	Key
15	Mounting Bracket
16	Vulcanized Plug
17	Plug Screws
18	Plug Pin
19	Plug O-Ring
20	Worm Gear Actuator
21	Actuator Bolts



DIMENSIONS IN INCHES	
STANDARD DIMENSIONS	DRAWING DIMENSIONS
1/16" ± 0.005	0.005" ± 0.005
1/8" ± 0.005	0.005" ± 0.005
1/4" ± 0.005	0.005" ± 0.005
3/8" ± 0.005	0.005" ± 0.005
1/2" ± 0.005	0.005" ± 0.005
3/4" ± 0.005	0.005" ± 0.005
1" ± 0.005	0.005" ± 0.005
1 1/4" ± 0.005	0.005" ± 0.005
1 1/2" ± 0.005	0.005" ± 0.005
2" ± 0.005	0.005" ± 0.005
2 1/2" ± 0.005	0.005" ± 0.005
3" ± 0.005	0.005" ± 0.005
3 1/2" ± 0.005	0.005" ± 0.005
4" ± 0.005	0.005" ± 0.005
4 1/2" ± 0.005	0.005" ± 0.005
5" ± 0.005	0.005" ± 0.005
5 1/2" ± 0.005	0.005" ± 0.005
6" ± 0.005	0.005" ± 0.005
6 1/2" ± 0.005	0.005" ± 0.005
7" ± 0.005	0.005" ± 0.005
7 1/2" ± 0.005	0.005" ± 0.005
8" ± 0.005	0.005" ± 0.005
8 1/2" ± 0.005	0.005" ± 0.005
9" ± 0.005	0.005" ± 0.005
9 1/2" ± 0.005	0.005" ± 0.005
10" ± 0.005	0.005" ± 0.005
10 1/2" ± 0.005	0.005" ± 0.005
11" ± 0.005	0.005" ± 0.005
11 1/2" ± 0.005	0.005" ± 0.005
12" ± 0.005	0.005" ± 0.005
12 1/2" ± 0.005	0.005" ± 0.005
13" ± 0.005	0.005" ± 0.005
13 1/2" ± 0.005	0.005" ± 0.005
14" ± 0.005	0.005" ± 0.005
14 1/2" ± 0.005	0.005" ± 0.005
15" ± 0.005	0.005" ± 0.005
15 1/2" ± 0.005	0.005" ± 0.005
16" ± 0.005	0.005" ± 0.005
16 1/2" ± 0.005	0.005" ± 0.005
17" ± 0.005	0.005" ± 0.005
17 1/2" ± 0.005	0.005" ± 0.005
18" ± 0.005	0.005" ± 0.005
18 1/2" ± 0.005	0.005" ± 0.005
19" ± 0.005	0.005" ± 0.005
19 1/2" ± 0.005	0.005" ± 0.005
20" ± 0.005	0.005" ± 0.005
20 1/2" ± 0.005	0.005" ± 0.005
21" ± 0.005	0.005" ± 0.005
21 1/2" ± 0.005	0.005" ± 0.005
22" ± 0.005	0.005" ± 0.005
22 1/2" ± 0.005	0.005" ± 0.005
23" ± 0.005	0.005" ± 0.005
23 1/2" ± 0.005	0.005" ± 0.005
24" ± 0.005	0.005" ± 0.005
24 1/2" ± 0.005	0.005" ± 0.005
25" ± 0.005	0.005" ± 0.005
25 1/2" ± 0.005	0.005" ± 0.005
26" ± 0.005	0.005" ± 0.005
26 1/2" ± 0.005	0.005" ± 0.005
27" ± 0.005	0.005" ± 0.005
27 1/2" ± 0.005	0.005" ± 0.005
28" ± 0.005	0.005" ± 0.005
28 1/2" ± 0.005	0.005" ± 0.005
29" ± 0.005	0.005" ± 0.005
29 1/2" ± 0.005	0.005" ± 0.005
30" ± 0.005	0.005" ± 0.005

GA INDUSTRIES, LLC
 14" - 20" ECOCENTRIC PLUG VALVE w/ ADJUSTABLE PACKING
 & WORM GEAR ACTUATOR w/ HANDWHEEL
 ANSI 125 LB FLANGES

SERIAL NO.	FIG. NUMBER	DATE	PROPERTY OF	DRAWN BY	APPR. BY
	B517	09-11-2014	GA INDUSTRIES, LLC	BRF	JT
				SCALE	N.T.S.
REFERENCES	FILE	DRAWING NO.	REV.		
PL-1005 / PL-2001	PL	PL-2010	A		

REV.	DESCRIPTION	DATE	BY
A	RE-ORIENT SIDE VIEW	10-10-2014	BRF

J:\Autocad\Plug\PL-Show\PL-2010-A.dwg