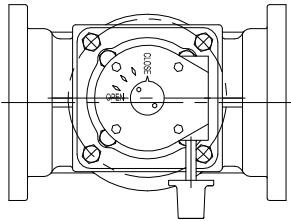
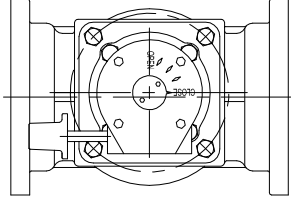


SEAT END



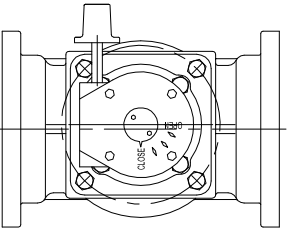
POSITION A - STANDARD

SEAT END



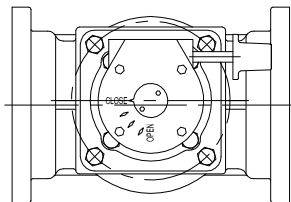
POSITION B

SEAT END



POSITION C

SEAT END



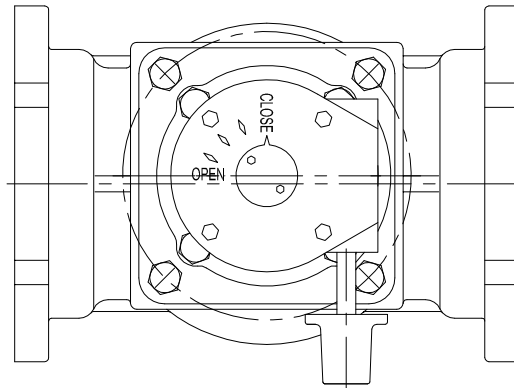
POSITION D

OPTIONAL ACTUATOR POSITIONS
CUSTOMER TO SPECIFY POSITION WITH ORDER
POSITION "A" SHOWN IN MAIN VIEW
POSITION "A" IS STANDARD

DIMENSIONS

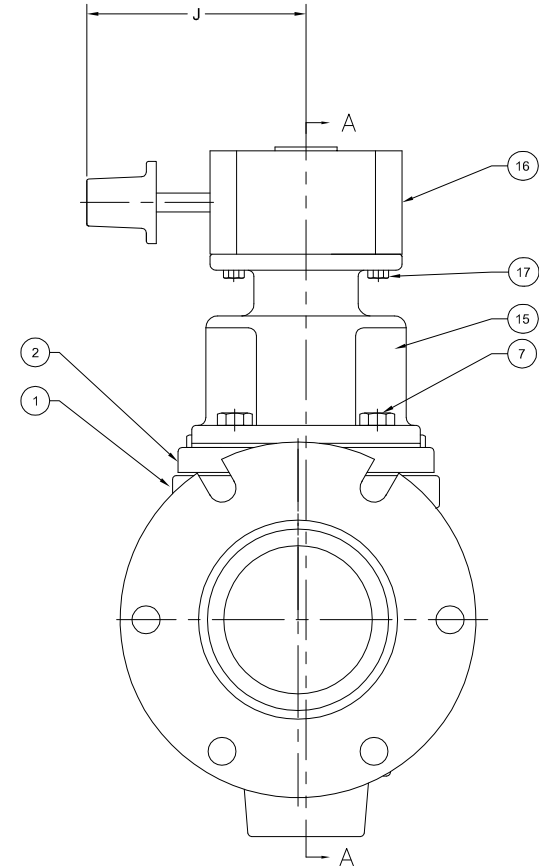
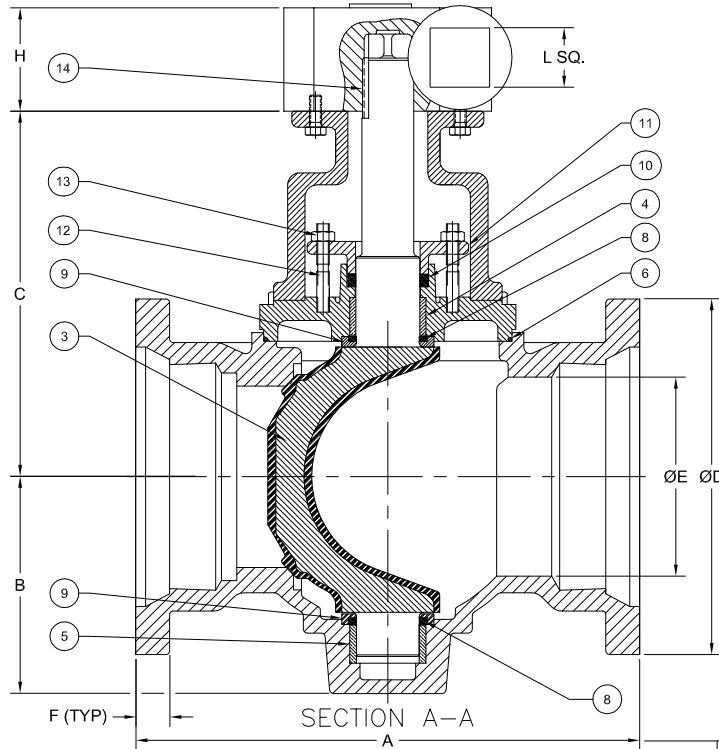
Valve Size	A		B		C		ØD		ØE		F		H		J		L SQ.		APPROX. WEIGHT	
	IN	MM	IN	MM	IN	MM	IN	MM	IN	MM	IN	MM	IN	MM	IN	MM	IN	MM	LB	KG
3"	11.50	292	4.56	116	8.75	222	7.69	195	3.19	81	.94	24	3.00	76	8.66	220	2.0	52	83	37.6
4"	14.25	362	5.94	151	10.00	254	9.12	232	4.25	108	1.00	25	3.50	89	8.66	220	2.0	52	122	55.3
6"	15.75	400	6.75	171	10.85	276	11.12	282	6.25	159	1.06	27	3.50	89	8.66	220	2.0	52	166	75.3
8"	17.36	441	9.38	238	13.97	355	13.37	340	8.25	210	1.12	28	4.84	123	9.85	250	2.0	52	322	146.1
10"	19.37	492	10.50	267	15.88	403	15.69	399	10.25	260	1.19	30	4.84	123	9.85	250	2.0	52	451	204.6
12"	20.75	527	11.06	281	17.34	440	17.94	456	12.20	310	1.25	32	4.84	123	9.85	250	2.0	52	524	237.7

SEAT END



NOTES:

1. FLANGE DRILLING PER ANSI A21.1 AWWA C111
2. IN COMPLIANCE WITH AWWA C517
3. COLD WORKING PRESSURE: 175 PSI
4. HYDROSTATIC TEST PRESSURE: 265 PSI



PARTS LIST	
NO.	Description
1	Body
2	Cover
3	Plug
4	Cover Bearing
5	Body Bearing
6	Cover O-Ring
7	Cover Bolts
8	Grit Excluder Seal
9	Thrust Bearing
10	Packing
11	Gland
12	Gland Studs
13	Gland Nuts
14	Key
15	Mounting Bracket
16	Worm Gear Actuator
17	Actuator Bolts

REV.	DESCRIPTION	DATE	BY

DIMENSIONS IN INCHES
STANDARD TOLERANCES (UNLESS OTHERWISE NOTED):
X .125
XX .010
XXX .005
FRACTIONS ± .004
ANGLES ± .01°
DRAFTED BY: NAK
PER: ABBE TO 2008 (100° FLATNESS) ROUNDNESS POSITION

GA INDUSTRIES, LLC
3" - 12" ECO-CENTRIC PLUG VALVE w/ ADJUSTABLE PACKING & BURIED SERVICE WORM GEAR ACTUATOR w/ SQUARE NUT MECHANICAL JOINT FLANGES

SERIAL NO.	DRAWN BY
FIG. NUMBER	APPR. BY
DATE	SCALE
PROPERTY OF GA INDUSTRIES, LLC	
REFERENCES	DRAWING NO.
FILE	REV.
PL-1011 / PL-2010	PL-2011