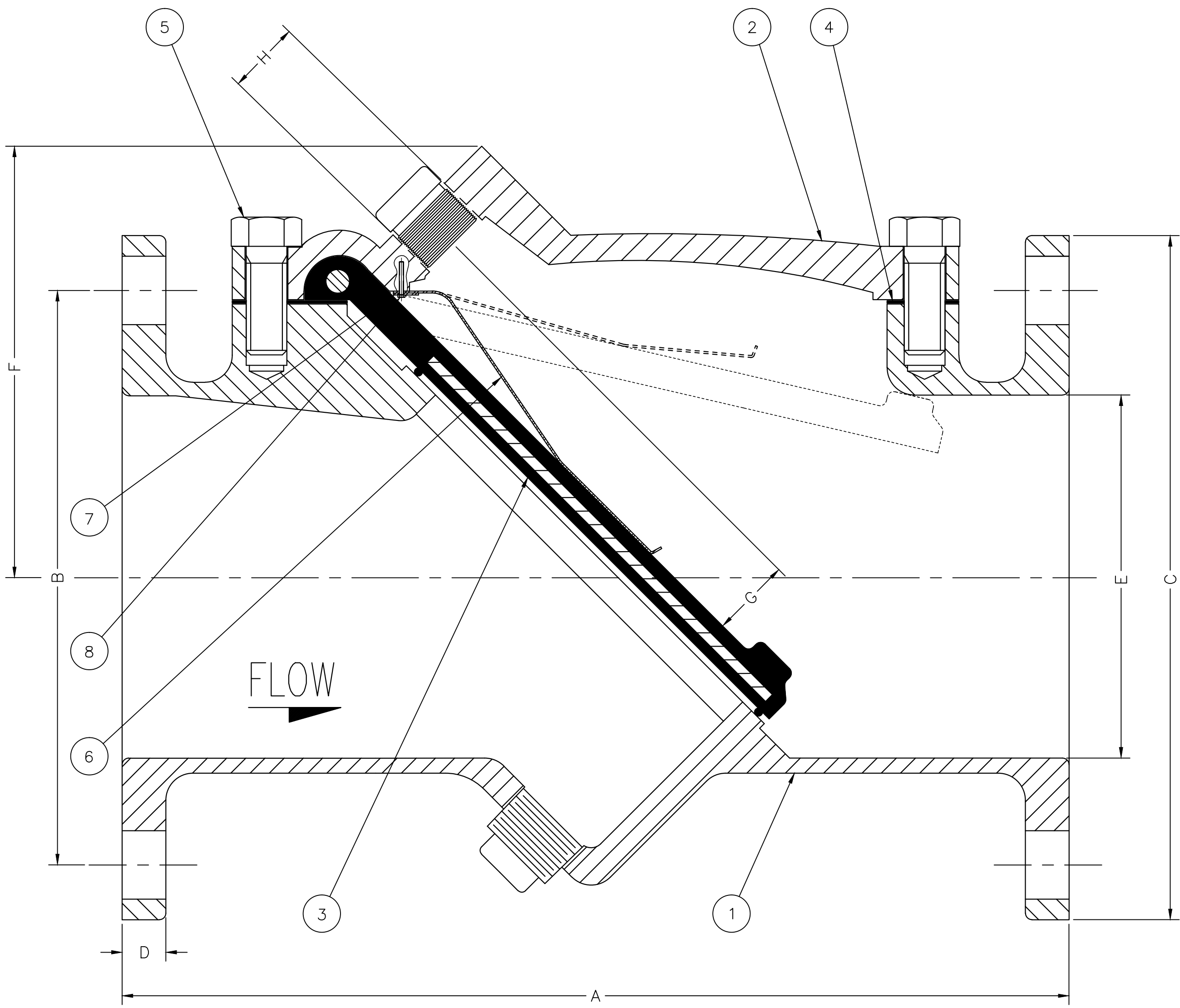


SIZE	A	B	C	D	E	F	BOLT SIZE	NO. OF BOLTS	G	H
2	8	4 3/4	6	5/8	2	3 3/8	5/8	4	1 1/2 ALL SIZES	1 ALL SIZES
2 1/2	8 1/2	5 1/2	7	11/16	2 1/2	3 3/8	5/8	4		
3	9 1/2	6	7 1/2	3/4	3	5 1/8	5/8	4		
4	11 1/2	7 1/2	9	15/16	4	5 3/4	5/8	8		
6	15	9 1/2	11	1	6	6 7/8	3/4	8		
8	19 1/2	11 3/4	13 1/2	1 1/8	8	8 3/8	3/4	8		
10	24 1/2	14 1/4	16	1 3/16	10	10 3/4	7/8	12		
12	27 1/2	17	19	1 1/4	12	12 1/2	7/8	12		
14	31	18 3/4	21	1 3/8	14	13	1	12		
16	32	21 1/4	23 1/2	1 7/16	16	14 1/4	1	16		
18	36	22 3/4	25	1 9/16	18	15 1/4	1 1/8	16		
20	40	25	27 1/2	1 11/16	20	16 7/8	1 1/8	20		
24	48	28 1/2	32	1 7/8	24	19 1/4	1 1/4	20		



BILL OF MATERIALS			
No.	DESCRIPTION	QTY.	MATERIAL
1	BODY	1	DUCTILE IRON
2	COVER	1	DUCTILE IRON
3	DISC	1	RUBBER COATED STL
4	GASKET	1	NBR
5	COVER BOLTS	VARIES PER VALVE SIZE	SST
6	SPRING ASSIST	1	SST
7	SPRING ASSIST SUPPORT PLATE	1	SST
8	SPRING ASSIST SCREWS	2	SST

REV.	DESCRIPTION	DATE	BY
C	ADDED 2"-2 1/2" SIZES BACK TO TABLE	07-29-2014	SWR
B	ADDED 3" SIZE BACK TO TABLE	09-27-2011	SWR
A	ELIMINATED SIZES 2"-3" FROM TABLE	07-31-2010	SWR

GA INDUSTRIES, LLC

2"-24" SPRING ASSISTED RUBBER FLAPPER SWING CHECK VALVE (125# ANSI FLANGES)

STANDARD TOLERANCES (UNLESS OTHERWISE NOTED) FINISHED SURFACES ONLY DIMENSIONS SHOWN IN INCHES .x = ±.02 .xx = ±.01 .xxx = ±.002 FRACTIONS ±1/64" ANGLES ±1' FINISH ⌀-XX RMS	SERIAL NO.	SCALE NONE	DRAWN BY SWR APPR. BY JT	
	REFERENCES	EFFECTIVE DATE 05-27-2009 TO		
	FIG. NUMBER SB200-D	FILE C	DRAWING NO. C-1390	REV. C

J:\AUTOCAD\GA-VALVE\GA-SHOW\C-1390-C.DWG

AVAILABLE IN SIZES 1 AND 3/4