

Figure 25-DXH Oil Controlled Closing Swing Check Valve

Description

GA Industries Figure 25-DXH swing check valves open freely and provide two-stage closure to minimize pressure surge. Following pump shutdown, the valve closes rapidly until the hydraulic system is engaged which then controls the final stage closing speed. The point at which the hydraulic system is engaged and the final closing speed are adjustable to allow a controlled amount of flow reversal during the final stage thereby reducing the pressure surge.

The Figure 25-DXH is tight sealing, suitable for water or sewage and effective at minimizing pump shutdown surges.

Product Features

- Opens to full flow area when swung only 25° away from seat for low head loss and reduced pumping cost
- Tough, durable resilient seat for drop tight sealing
- Bolted cover allows access to all internal components
- Side mounted hydraulic system, accessible and serviceable without dewatering the valve

Standard Materials

- Body & Disc Cast Iron, ASTM A126 Class B
- Cover Steel, ASTM A36
- Body Seat Stainless Steel, Type 316
- Disc Seat Thiokol
- Hinge Shaft Stainless Steel, Type 303
- External Fasteners Steel, A307, Zinc Plated

Corrosion Protection

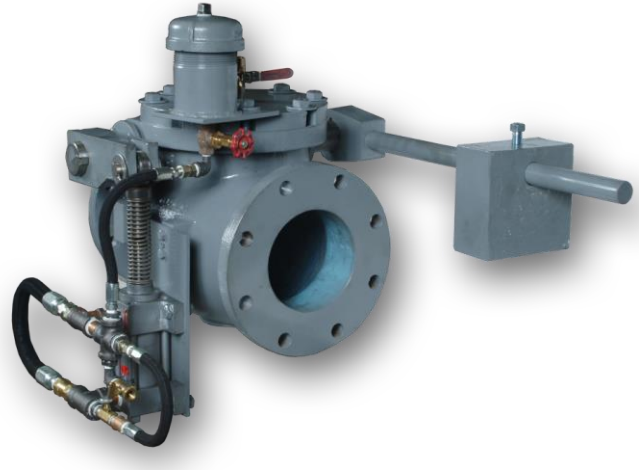
- Standard: Uncoated Internal, Enamel Primer External

See Option P2 for upgraded corrosion protection package

Non-Shock Working Water Pressure at up to 150F (66C)				
Figure No.	25-DXH			
Flange	ANSI B16.1 Class 125			
Size	3" to 12"	14" to 16"	18" to 20"	24"
Max Working Pressure*	150 PSI	125 PSI	100 PSI	50 PSI
Shell Test	225 PSI			

* Maximum pressure across closed valve in reverse direction

Data Sheet 25DXH.01B



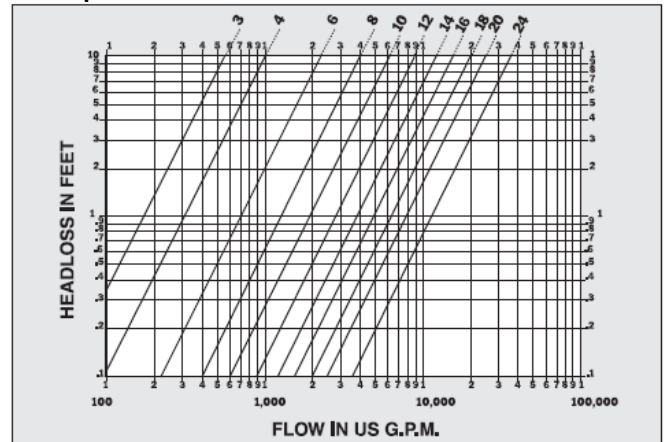
Options

- Option 1D With Honeywell HDLS NEMA 1, 3, 4, 4X, 6, 6P, 12 & 13 DPDT Limit Switch
- Option VI Configured for Vertical Flow Up Installation
- Option S3 Type 316 Stainless Steel Hinge Shaft
- Option P2: Minimum 6 mil Internal and External 2-Part NSF-61 Carboline 891 Epoxy and 316 SS External Fasteners

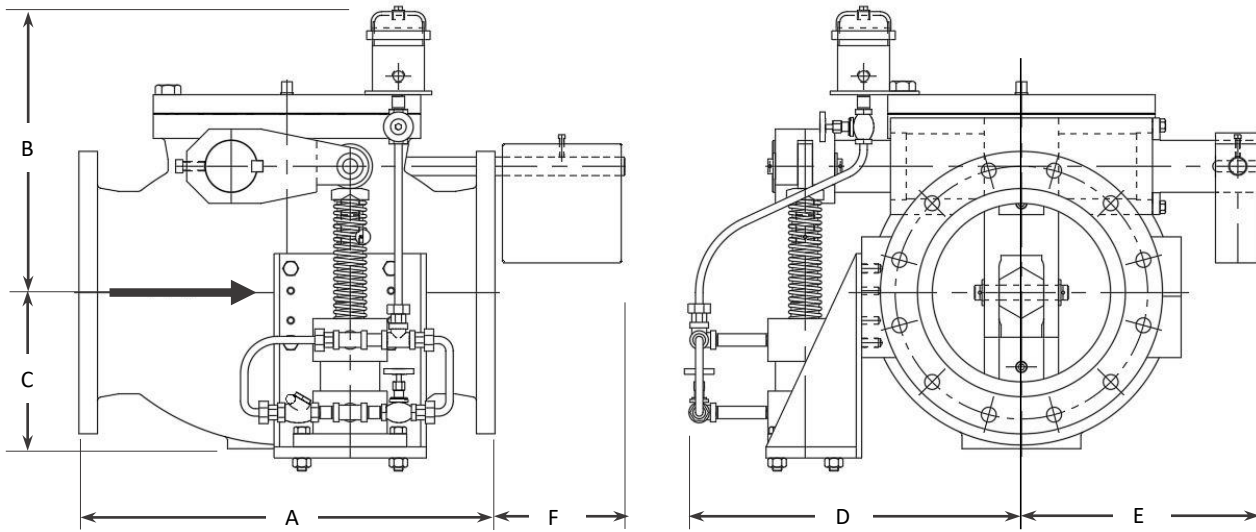
Ordering Data

- Figure Number (25-DXH)
- Size
- Options and/or Accessories

Full Open Head Loss



Data Sheet 25DXH.01B

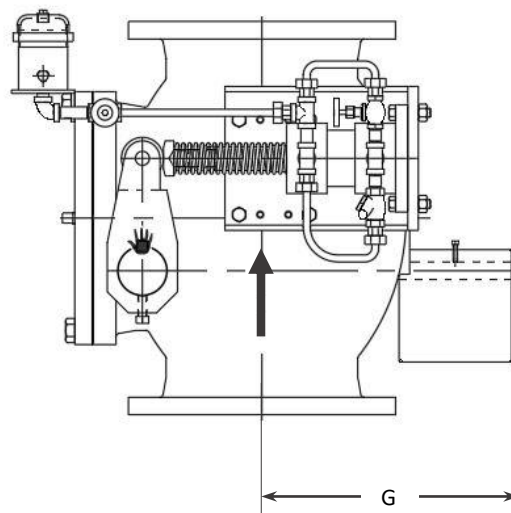


Installation Dimensions

SIZE	3"	4"	6"	8"	10"	12"	14"	16"	18"	20"	24"
A	12	13	17½	18	23	28	33	36	40	40	48
B	8	9	10	12	15	15	20	20	20	24	28
C	11	12	12	14	14	12	16	16	16	20	24
D	10	11	11	13	15	16	20	21	22	28	34
E	7	8	9	11	13	15	20	21	22	26	32
F	18	16½	14½	13½	5½	8½	3½	2	1½	1½	13
G	23	21½	20½	18½	13½	18	15½	14½	15½	13½	19½
WGT	150	200	300	400	550	1,100	1,650	1,995	3,150	3,450	6,500

Dimensions in inches, weight in pounds and are approximate. Request certified drawings if critical.

VERTICAL INSTALLATION



Revised 4-5-19