

# Figure 517-T ECO-Centric® Eccentric Plug Valves ½" to 2½" NPT Connections

## Description

GA Industries Figure 517 NPT end, quarter-turn, round port eccentric plug valves make ideal shutoff valves on small diameter sewage, wastewater and other solids bearing fluid pipelines.

With a flow area equivalent to 100% of the adjacent pipe, the valves offer low head loss, reduced clogging potential and they seal drop tight in both directions up to full rated pressure. The valve is lever operated and standard with memory stop for throttling applications.

These small diameter eccentric plug valves complement GA Industries larger Figure 517 flanged or mechanical joint round port valves.

## Product Features

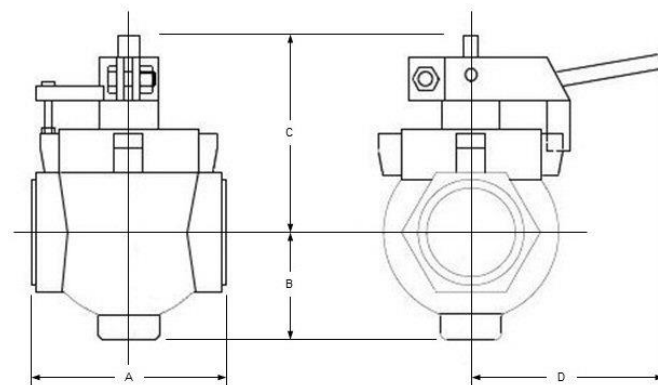
- Rugged epoxy coated ductile iron body
- Rubber coated ductile iron plug for tight shut off
- Full port flow area for low head loss
- Upper and lower shaft bearings
- Upper and lower grit excluders
- Quarter turn operation with memory stop

## Standard Materials

- Body, Cover & Plug Ductile Iron, ASTM A536 Grade 65-45-12
- Plug Coating Buna-N Rubber
- Shaft Bearings Permanently Lubricated 316SS
- Grit Excluders Buna-N Rubber
- External Fasteners 316 Stainless Steel

## Ordering Data

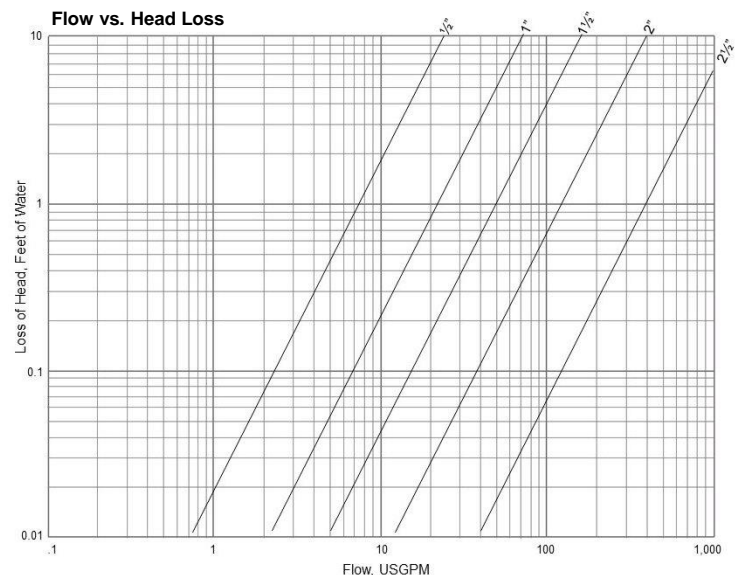
- Figure Number (517-T)
- Size



Data Sheet 517.03B



Non-Shock Working Water Pressure Up to 125F (52C)	
Figure Number	517-T
Connections	NPT Female
Connection Size	½", 1", 1½", 2", 2½"
Max Inlet	175 PSI
Hydro Test	263 PSI



## Installation Dimensions

SIZE	½"	1"	1½"	2"	2½"
A	3¾	3¾	4⅞	5½	6¼
B	2	2	2⅜	3	3
C	3¾	3¾	4⅜	5⅜	5½
D	5⅞	6	6½	7⅞	8
Weight	4	5	9	13	20

Dimensions in inches, weight in pounds and are approximate. Request certified drawings if critical.