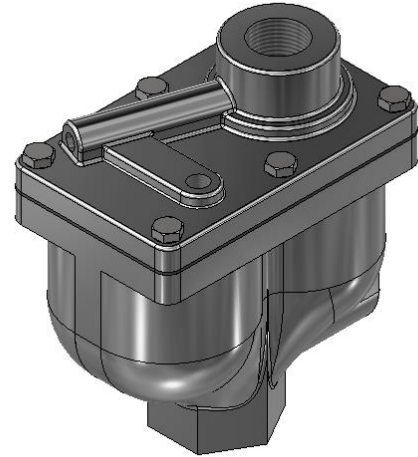


Figure 945SS All Stainless Steel Combination Air Valve for Clean Water

Description

GA Industries Figures 945SS All Stainless Steel Combination Air Valves are “triple function” valves. They vent air from pipelines and systems as they are being filled with water and then close tight once the system is full and pressurized. They also release air that accumulates in the valve while the system is operational. And they automatically open to admit air to limit vacuum formation when the pipeline or system is drained and/or a negative pressure occurs in the valve.

The Figure 945SS Combination Air Valves are typically installed at high points in the system where air naturally rises during filling and in operation and vacuum first forms during draining.



Product Features

- 316 stainless steel construction for ultimate corrosion resistance
- Compact and light weight
- Full port orifice for maximum air outflow and inflow
- Utilizes “kinetic” operating principle, designed not to blow shut
- Tight sealing and easily replaceable rubber seats

Standard Materials

- Body & Cover Stainless Steel, Type 316
- Floats Stainless Steel, Type 316
- Internal Linkage Stainless Steel, Type 316
- Replaceable Seat Buna-N Rubber
- External Fasteners Type 316 Stainless Steel

Approvals & Certifications

- Complies with AWWA Standard C512

Options/Accessories

- Option IV Inlet Isolating Valve – lever operated LF bronze ball valve (not available on 4”)
- Option OC Outlet Cowl – Deflects air outflow, minimizes debris from entering valve during inflow (not 316SS)
- Option TD Double-Acting Throttle Device – regulates air exhausting rate, unrestricted air intake (not 316SS)

Ordering Data

- Figure Number (945SS)
- Size
- Options/Accessories

Non-Shock Working Water Pressure at up to 150F (66C)		
Size	½”, ¾” and 1”	
Figure Number	945SS	945SSH
Inlet Connection	NPT	NPT
Outlet Size	Same as Inlet	Same as Inlet
Outlet Connection	NPT	NPT
Air Release Orifice Diameter	0.094”	0.063”
Working Pressure	10 – 150 PSI	10 – 300 PSI
Pressure Rating	300 PSI	300 PSI
Hydro Test	450 PSI	450 PSI

Valve connections tapped 1” NPT and supplied with reducers for smaller size.

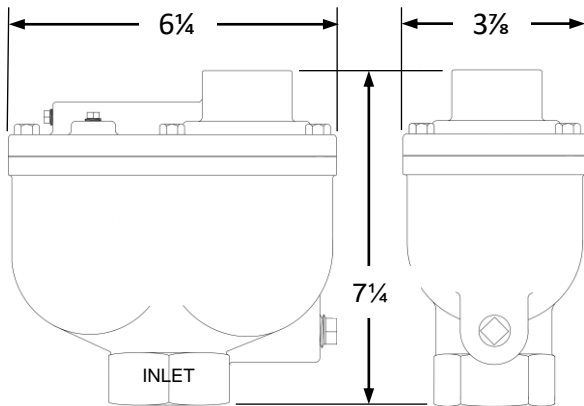
Figure 945SS All Stainless Steel Combination Air Valve for Clean Water

Data Sheet 945SS.01

Air Vacuum Orifice

Pressure at Valve Inlet During Filling	Air Outflow Rate, Standard Cubic Feet/Min (SCFM)		
	1/2"	3/4"	1"
1 PSI	19.6	44.2	78.5
2 PSI	27.8	62.5	111
3 PSI	34.0	76.5	136
4 PSI	39.3	88.4	157
5 PSI	43.9	98.8	176
7 PSI	52.0	117	208
10 PSI	62.1	140	248
15 PSI	75.2	169	304

Value is rate at which air is vented from pipeline/system during filling at valve inlet pressures shown. Inlet pressure during filling should not exceed 5 PSI.



Air Vacuum Orifice

Pressure at Valve Inlet During Draining	Air Inflow Rate, Standard Cubic Feet/Min (SCFM)		
	1/2"	3/4"	1"
-1 PSIG	20.0	45.2	80
-2 PSIG	28.3	63.9	113
-3 PSIG	34.7	78.3	138
-4 PSIG	40.1	90.4	160
-5 PSIG	44.9	101	179

Value is rate at which air is drawn into the valve at negative pipeline/system pressure shown. Multiply SCFM air inflow rate x 7.48 to convert to equivalent pipeline/system liquid draining rate in USGPM.

Air Release Orifice

Pressure At Valve Inlet	Air Release Orifice Venting Rate, Standard Cubic Feet/Min (SCFM)	
	Figure 945SS	Figure 945SSH
10 PSI	2.2	1.0
15 PSI	2.6	1.2
25 PSI	3.5	1.6
50 PSI	5.8	2.6
75 PSI	8.0	3.6
100 PSI	10.2	4.5
150 PSI	14.7	6.5
200 PSI		8.5
250 PSI		10.5
300 PSI		12.5

Installation Dimensions

SIZE	1/2", 3/4", 1"
Valve Weight	16 lbs.
Add for Inlet Isolating Ball Valve	2 lbs.
Add for Outlet Cowl	1 lb.

All dimensions and weights are approximate. If critical request certified drawings

INLET ISOLATING VALVE and/or OUTLET COWL

