

Figure B517 100% Full Port Flow Round Port Eccentric Plug Valves For In Plant or Exposed Service

Description

The GA Industries Figure B517 Eccentric Plug Valve is a rugged, field-proven valve that will provide many decades of trouble-free service. Its flow efficient round port provides lower head loss, 100% full flow and better solids handling ability than traditional plug valves. In addition, the epoxy coated ductile iron body and cover provide superior strength and long-term corrosion resistance while the spherically seating rubber coated plug provides drop tight shutoff in both directions.

Figure B517 exposed service eccentric plug valves are available with a 2" direct operating nut for quarter turn wrench operation (optional chain lever) or a worm gear with handwheel (optional chainwheel or 2" operating nut).

Standard Features

- Internal and external epoxy coated, high strength ductile iron body and cover
- Flow efficient round port, out-performs rectangular port plug valves
- Bi-directional zero leakage seating up to full rated pressure
- Shaft packing adjustable and replaceable without removing the actuator
- Upper and lower grit excluders for extended bearing life
- Type 316 stainless steel external fasteners, including packing studs and nuts

Standard Materials

- Body and Cover Ductile Iron, ASTM A536 Grade 65-45-12
- Body Seat Weld Overlaid 95% Pure Nickel
- Plug Coating Buna-N Rubber
- Shaft Bearings Stainless Steel, Type 316, Self Lubricating
- External Fasteners Type 316 Stainless Steel

Corrosion Protection

- Standard: Internal and External PPG/Amerlok 400 2-Part Epoxy, Minimum 6 mil DFT

Non-Shock Working Water Pressure at up to 180F (82C)			
Figure Number	B517		
Connections	ANSI Class 125 Flanged		
Operation	Direct Nut*	Worm Gear with Handwheel or 2" Nut	
Size	3" to 8"	3" to 12"	14" to 20"
Max Working Pressure	175 PSI		150 PSI
Hydro Test	265 PSI		225 PSI

* Quarter turn wrench/lever operated



Approvals & Certifications

- Fully complies with AWWA Standard C517

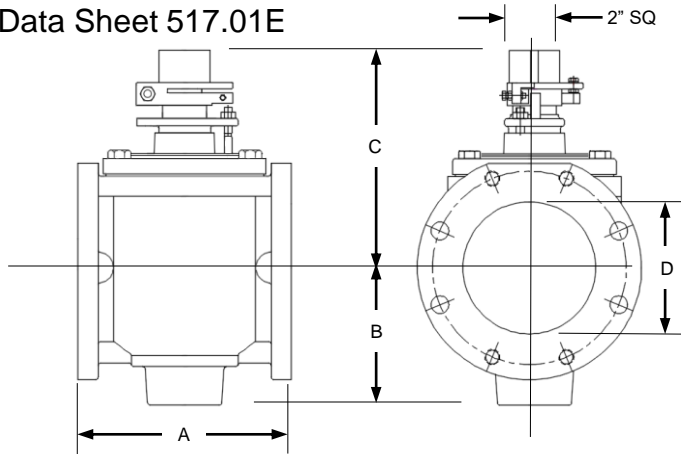
Options and Accessories

- Option VS Vacuum Service – Suitable for Pro-Cav Pump Suction or Vacuum Sewer Service
- Option CL With Chain Lever – Facilitates Operation of Overhead Direct Nut Valves
- Option CW With Chainwheel – Facilitates Operation of Overhead Worm Gear Operated Valves
- Option WS Worm Gear with 2" Operating Nut Instead of Handwheel

Ordering Data

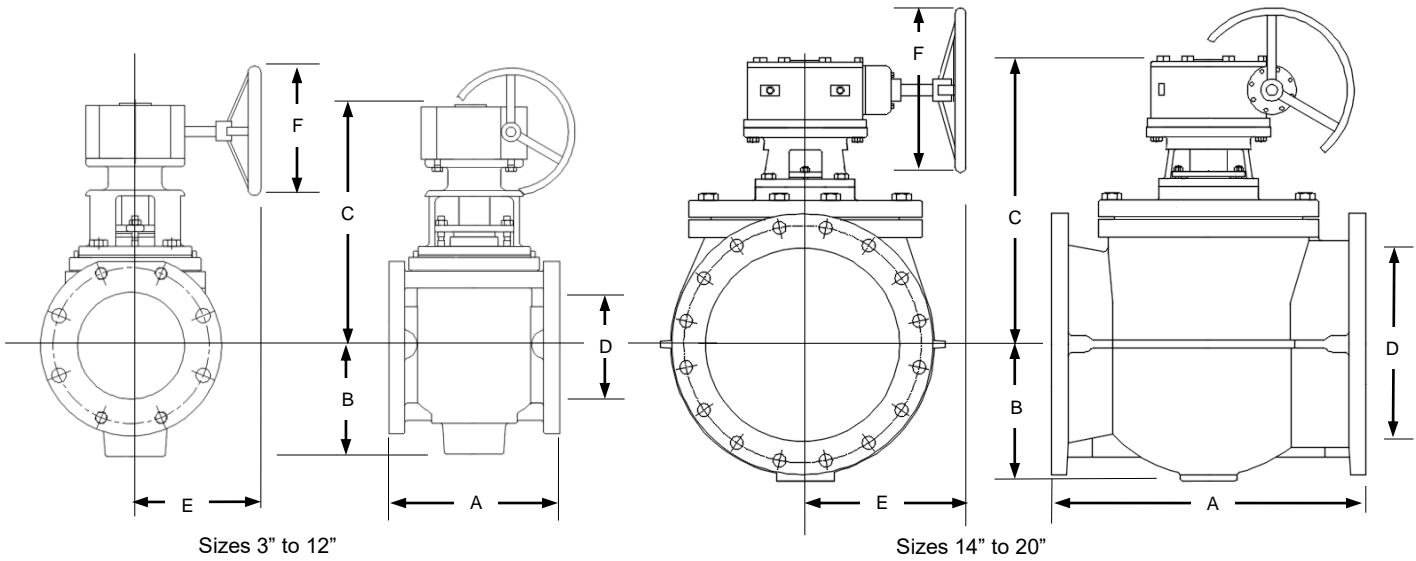
- Figure Number B517
- Size
- Connection (Class 125 flanged)
- Operation (Direct Nut or Worm Gear)
- Options

Data Sheet 517.01E



Direct Nut Installation Dimensions

SIZE	3"	4"	6"	8"
A	8	9	10½	11½
B	4½	6	6¾	9½
C	8⅞	10	10¾	14
D Dia	3	4	6	8
WGT	46	83	125	229



Sizes 3" to 12"

Sizes 14" to 20"

Worm Gear Installation Dimensions

SIZE	3"	4"	6"	8"	10"	12"	14"	16"	18"	20"
A	8	9	10½	11½	13	14	17	17¾	30	36
B	4½	6	6¾	9½	10½	11	11	13	13¾	15¾
C	10½	11¾	12½	16½	18½	19¾	22¾	24	24	26
D (Dia.)	3	4	6	8	10	12	14	16	18	20
E	9¼	9¼	9¼	10½	10½	10½	19¾	19¾	19¾	19¾
F (Dia.)	9	12	12	12	12	12	20	20	20	20
WGT	73	115	155	304	394	487	757	952	1254	2004

- Worm gear actuator can be rotated in 90-degree increments about valve centerline
- 2" square nut available instead of handwheel
- Dimensions in inches and weight in pounds and are approximate. Request certified drawings if critical.

Flow Coefficients

SIZE	3"	4"	6"	8"	10"	12"	14"	16"	18"	20"
C _v	569	982	1997	3371	4870	7643	8220	11300	12400	17500
K	0.22	0.24	0.29	0.32	0.37	0.32	0.51	0.46	0.61	0.46