

Figures R507-D, R507-U

AWWA Metal Seated Ball Valve

For Pump Control & Isolation Service

Description

GA Industries R507-D and R507-U are quarter-turn, full ported AWWA C507 ball valves. When used for pump control the valves control surges during pump start and shutdown. And, whether pump control or isolating service, when fully open they provide negligible head loss for long term low cost of ownership.

The R507 has a short laying length and its rugged trunnion-mounted design and metal-to-metal seating ensures long term service in water, sewage and wastewater applications.

Cylinder operated valves for pump control can be actuated by water, oil or air pressure and incorporate a link & lever torque unit to provide a characterized rotation of the ball for surge control. They are furnished with normal and emergency solenoid pilots, speed controls and limit switch.

The valves can also be actuated by an electric motor operator or manual gear operator for flow control or isolating service.

Product Features

- Fully conforms to AWWA C507
- Rugged trunnion mounted design
- Virtually zero head loss when fully open
- Weld overlaid Monel (nickel-copper alloy) body seat
- Flexible stainless steel ball seat
- Wide range of actuation methods

Standard Materials

- Body, Cover
 - Class 150 Cast Iron, ASTM A126 Class B
 - Class 250/300 Ductile Iron, ASTM A536 Gr 65-45-12
- Body Seat Monel 400
- Ball (Rotor) Ductile Iron, ASTM A536 Gr 65-45-12
- Ball Seat Stainless Steel Type 304
- Valve Shaft Stainless Steel
- Shaft Bearings Lead-free Bronze
- External Fasteners Steel, A307, Zinc Plated

Corrosion Protection

- Standard: Internal and External Carboline 891
NSF-61 Certified Epoxy, min 6 mil DFT

Options/Accessories

- With Water Cylinder Operator
- With Oil Cylinder Operator
- With Air/Oil Cylinder Operator
- With Electric Motor Operator
- With Pump Director Pre-wired Control Panel

Ordering Data

- Figure Number (R507-D, R507-U)
- Size
- Actuation Method
- Options and/or Accessories



Non-Shock Working Water Pressure Up to 125F (52C)			
Figure Number	R507-D	R507-U	
AWWA C507	Class 150	Class 250	Class 300
Flanges	ANSI B16.1 Class 125	ANSI B16.1 Class 250	
Size	6" – 36"	6" – 36"	6" – 36"
Max Inlet	150 PSI	250 PSI	300 PSI
Hydro Test	225 PSI	375 PSI	450 PSI

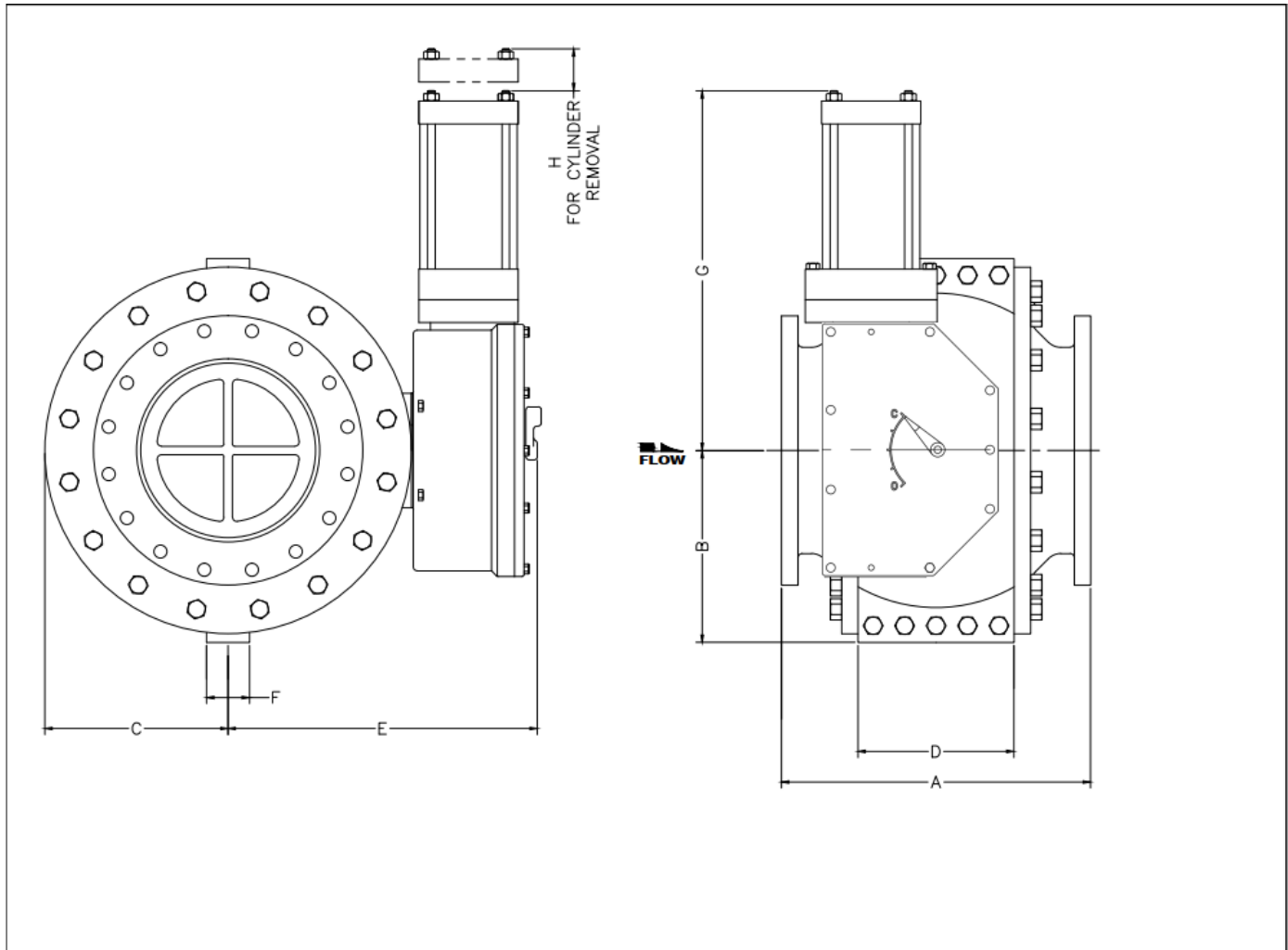
Optional Model 7700A Pump Director



When used for pump control, the operation of the GA Industries Figure R507 AWWA Ball Valve and the pump motor must be sequenced for proper surge control. The optional GA Industries Model 7700A is a user friendly and SCADA compatible PLC based control panel that interfaces between the Motor Control Center and the pump control valve to provide the necessary electrical logic.

See Data Sheet 7700A.01 for more information.

Data Sheet 507.01B



Installation Dimensions

Class		6"	8"	10"	12"	14"	16"	18"	20"	24"	30"	36"
A	CL150	15 $\frac{3}{8}$	18	18 $\frac{3}{8}$	21	26 $\frac{1}{4}$	27	29	32	37	46	54
	CL250/300	16 $\frac{5}{8}$	19	19 $\frac{1}{2}$	22 $\frac{1}{2}$	27 $\frac{3}{4}$	28 $\frac{5}{8}$	30 $\frac{5}{8}$	33 $\frac{5}{8}$	38 $\frac{3}{4}$	47 $\frac{1}{4}$	56
B		9	10 $\frac{1}{8}$	11 $\frac{1}{8}$	13 $\frac{1}{2}$	15 $\frac{1}{2}$	17	19	20 $\frac{3}{4}$	24 $\frac{1}{8}$	29 $\frac{3}{4}$	34 $\frac{3}{4}$
C		8 $\frac{1}{4}$	9 $\frac{1}{2}$	11	12 $\frac{7}{8}$	14 $\frac{7}{8}$	16 $\frac{1}{2}$	18 $\frac{3}{8}$	20	23	28 $\frac{3}{8}$	33 $\frac{3}{8}$
D		6 $\frac{1}{4}$	7	9	10	12	13	13 $\frac{1}{2}$	15 $\frac{1}{4}$	19	22 $\frac{1}{2}$	27
E		21 $\frac{1}{4}$	23	24 $\frac{1}{4}$	28 $\frac{1}{2}$	28	32	33 $\frac{1}{2}$	34 $\frac{1}{4}$	43 $\frac{1}{2}$	52 $\frac{1}{4}$	62
F		2 $\frac{1}{2}$	2 $\frac{1}{2}$	3 $\frac{1}{4}$	3 $\frac{1}{4}$	4	4	4 $\frac{1}{2}$	4 $\frac{1}{2}$	5	6	7
G		30	30	30	30	38	38	38	38	50	50	50
H		5 $\frac{1}{4}$	5 $\frac{1}{4}$	7	7	7	8 $\frac{5}{8}$	8 $\frac{5}{8}$	8 $\frac{5}{8}$	12	15 $\frac{1}{2}$	15 $\frac{1}{2}$
WGT	CL150	1,050	1,250	1,550	2,000	2,600	4,000	4,100	5,200	7,500	13,000	18,500
	CL250/300	1,100	1,325	1,650	2,125	2,800	4,250	4,400	5,600	8,200	14,000	19,900

1. Dimensions in inches, weight in pounds and are approximate. Request certified drawings if critical.
2. Class 250 and 300 flanges supplied flat face unless otherwise specified. Dimension A does not include raised face.
3. Actuator can be rotated in 90 degree increments about the valve centerline.
4. Water or oil cylinder operated valve depicted. Consult factory for information on pneumatic, air/oil cylinder, electric motor or manual gear actuated valves