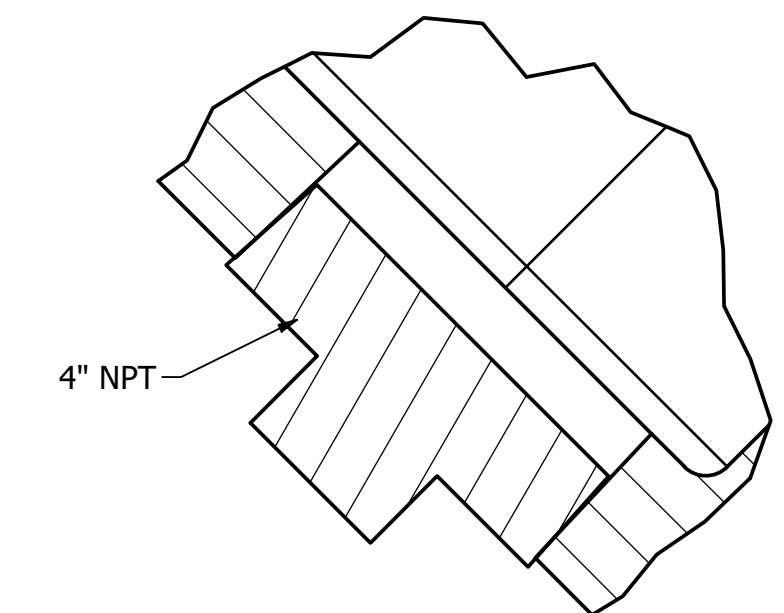


DETAIL A
SCALE 6" = 1'-0"



DETAIL B
SCALE 6" = 1'-0"

BILL OF MATERIALS			
No.	Description	QTY.	MATERIAL
1	BODY	1	DUCTILE IRON
2	COVER	1	DUCTILE IRON
3	DISC	1	EDPM RUBBER COATED STL
4	GASKET	1	NBR
5	COVER BOLTS	24	SST

BREAK SHARP EDGES

GA INDUSTRIES, LLC 30" RUBBER FLAPPER SWING CHECK VALVE; 125# ANSI FLANGES	<small>STANDARD TOLERANCES (UNLESS OTHERWISE NOTED)</small> X = ± .1 .XX = ± .01 .XXX = ± .005 FRACTIONS = ± 1/64 ANGLES = 3° MAX <small>PER ANSI Y14.5M -3/32 FLATNESS, ROUNDNESS, POSITION</small>	<small>DIMENSIONS IN INCHES (SMALLEST DIM. TO SURFACE)</small> 0 TO < 1 = 1/8 1 TO < 6 = 3/16 6 TO < 12 = 1/4 12 AND > = 3/8	<small>CASTING STOCK MINIMUM</small> 0 TO < 1 = 1/8 1 TO < 6 = 3/16 6 TO < 12 = 1/4 12 AND > = 3/8	SERIAL NO. 200	DRAWN BY JCS	
	DATE 4/29/2021	SCALE 1/4"=1"	PROPERTY OF GA INDUSTRIES, LLC		REFERENCES FILE	DRAWING NO. RF-30000
	REV A	DESCRIPTION ADDED VIEWS A AND B	DATE 2/15/2022	APPROVED JCS	REV A	REV A
	<small>GA INDUSTRIES, LLC 1000 GA INDUSTRIAL BLVD WASHINGTON, DC 20001 TEL: 202-462-1000 WWW.GAINDUSTRIES.COM</small>					

REV	DESCRIPTION	DATE	APPROVED
A	ADDED VIEWS A AND B	2/15/2022	JCS